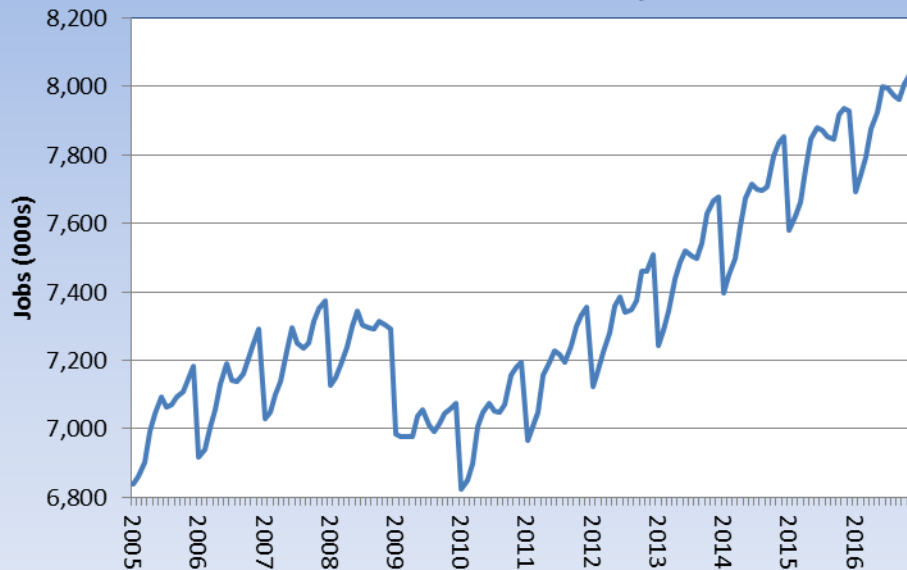




# New York State Economic Indicators Dashboard

## Seasonally Adjusted Private Sector Jobs, NYS



Source: NYS Department of Labor

### New York State Private Sector Employment (000s)

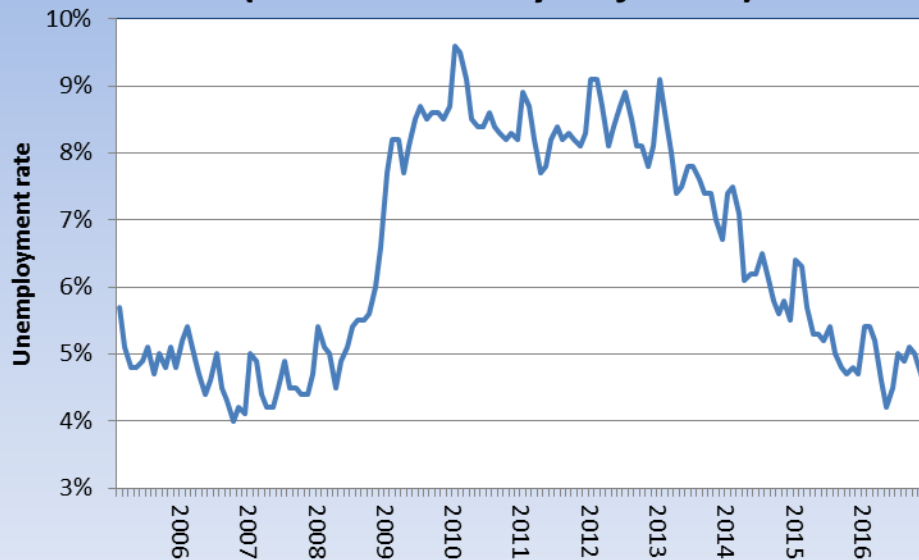
December 2016	8,027.5
November 2016	8,035.1
Change from last month	-0.1%
December 2015	7,929.3
Change from last year	1.2%

**About the Data:** Monthly private sector jobs data is provided by the NYS Department of Labor as part of the Current Employment Statistics survey, which samples 18,000 New York State businesses each month.



# New York State Economic Indicators Dashboard

## Unemployment Rate, NYS (Not Seasonally Adjusted)



Source: NYS Department of Labor

### New York State Unemployment Rate

December 2016	4.5%
November 2016	4.7%
December 2015	4.7%

**About the Data:** Monthly unemployment data is provided by the NYS Department of Labor as part of the Local Area Unemployment Statistics program. Statewide data is based on the monthly Current Population Survey conducted by the U.S. Bureau of the Census.



# New York State Economic Indicators Dashboard

## Index of Coincident Economic Indicators, NYS



Source: NYS Department of Labor

### Index of Coincident Economic Indicators

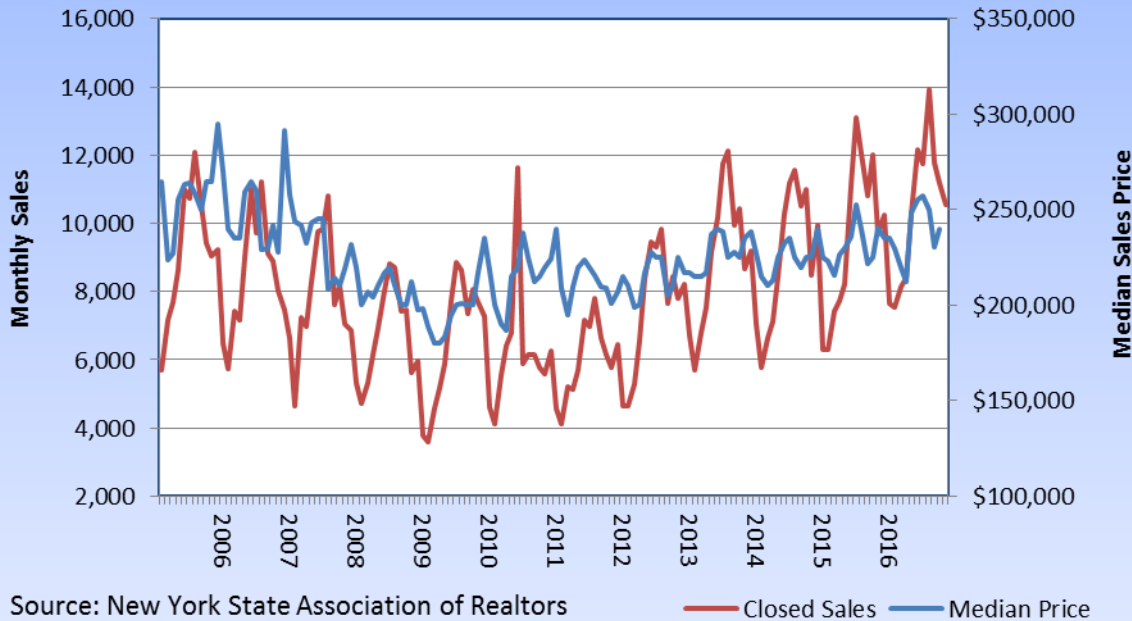
December 2016	125.8
November 2016	126.0
December 2015	124.6

**About the Data:** The ICEI is a monthly composite index of business cycle indicators produced by the NYS Dept. of Labor. It is designed to provide reliable and timely information about current economic conditions in New York State. The indicators include private sector employment, the unemployment rate, average weekly hours of manufacturing workers, and sales tax collections. (July 1992 = 100)



# New York State Economic Indicators Dashboard

## Monthly Sales and Median Price for Single-Family Homes, New York State



### Single Family Home Sales and Median Price, New York State

	Sales	Price
November 2016	10,547	\$240,000
October 2016	11,201	\$230,500
Change from last month	-5.8%	4.1%
November 2015	9,684	\$225,000
Change from last year	-8.9%	6.7%

**About the Data:** Monthly sales data is provided by the NYS Association of REALTORS. Data comes from the monthly survey of realtors and reflects sales activity for existing single-family homes.



# New York State Economic Indicators Dashboard

### Seasonally Adjusted Home Price Index for New York City



Source: Standard & Poors

### Case-Shiller Home Index Prices for NYC

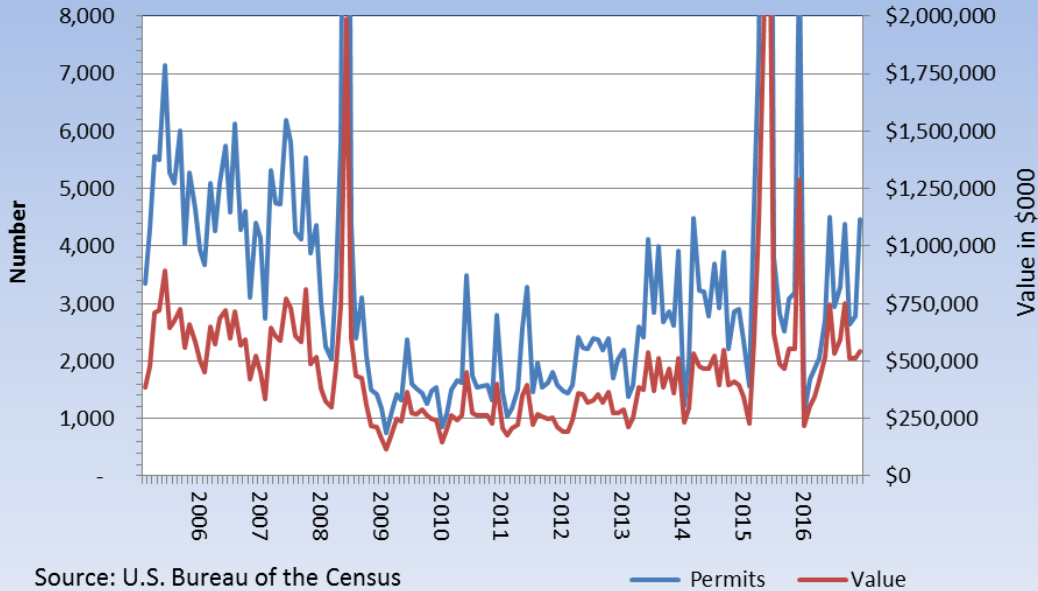
October 2016	182.1
September 2016	181.4
October 2015	179.0

**About the Data:** The S&P/Case-Shiller Home Price Indices measure changes in the value of residential real estate both nationally as well as in 20 metropolitan regions. (January 2000 = 100)



# New York State Economic Indicators Dashboard

**Authorized Building Permits,  
Number and Value, New York State**



Authorized Building Permits, New York State		
	Permits	Value (\$000)
December 2016	4,459	\$540,291
November 2016	2,773	\$514,256
Change from last month	61%	5%
December 2015	9,181	\$1,289,148
Change from last year	-51%	-58%

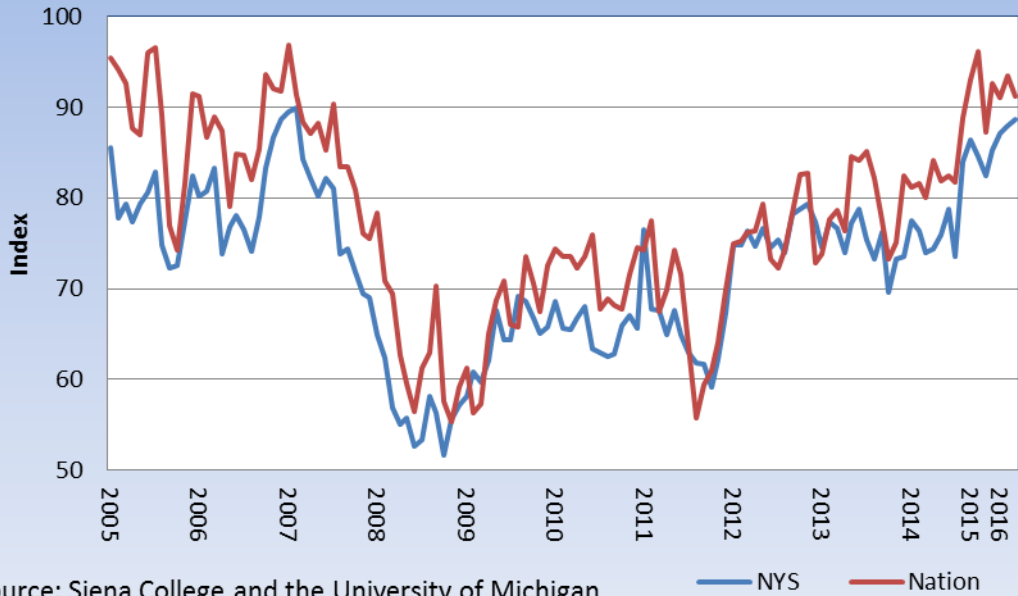
**About the Data:** Data on building permits for housing units is compiled by the U.S. Bureau of the Census as one of the nation’s leading economic indicators. The data is reported to the Census Bureau by individual local governments who issue building permits.

*\*\* June 2008 is excluded due to an extreme anomaly in the data, reflecting large multi-unit permit activity in New York City.*



# New York State Economic Indicators Dashboard

## Consumer Confidence US and NYS



Source: Siena College and the University of Michigan

Consumer Confidence		
	NY	US
Third Quarter 2016	88.6	91.2
Second Quarter 2016	88.0	93.5
Change from last quarter	1%	-2%
Third Quarter 2015	82.5	87.2
Change from last year	7%	5%

**About the Data:** New York consumer confidence is measured in a monthly survey by the Siena Research Institute by random telephone calls to 805 New York State residents over the age of 18. This index allows a direct comparison to the University of Michigan’s Consumer Sentiment index for the nation. Note: The data is not available monthly since November, 2014.



# New York State Economic Indicators Dashboard

## Empire State Manufacturing Survey



Source: Federal Reserve Bank of New York

### Empire State Manufacturing Survey

January 2017	6.5
December 2016	9.0
January 2016	-19.4

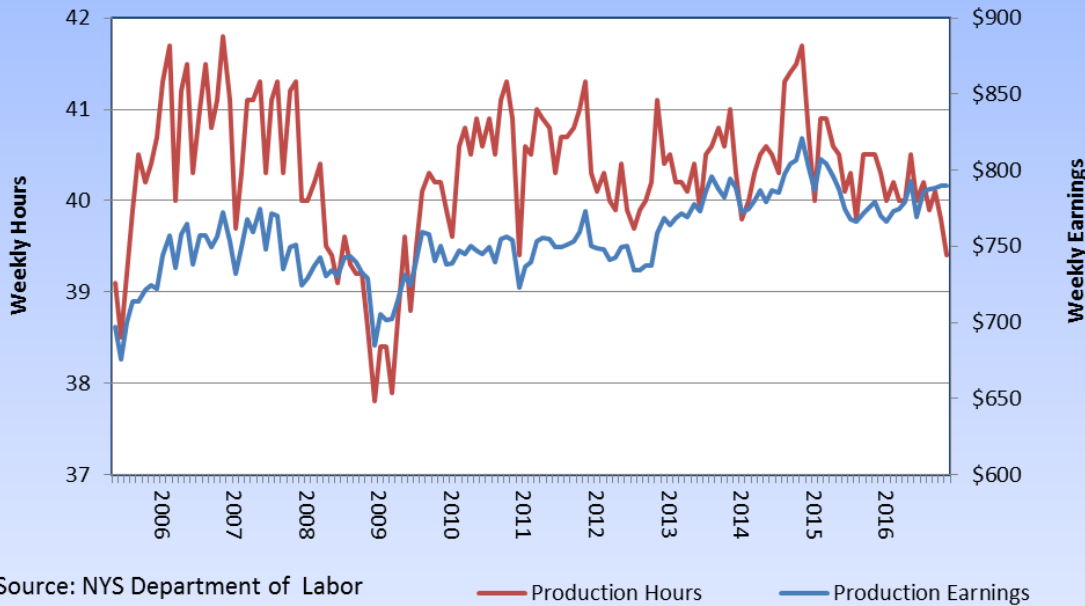
**About the Data:** Each month about 200 manufacturing executives in a variety of industries across the state are sent questionnaires to report changes in different indicators from the previous month. About 100 responses are received. The survey's main index, general business conditions, is not a weighted average of other indicators – it is a distinct question posed on the survey. The index is seasonally adjusted.





# New York State Economic Indicators Dashboard

**Weekly Hours and Earnings for  
NYS Manufacturing Production Workers**



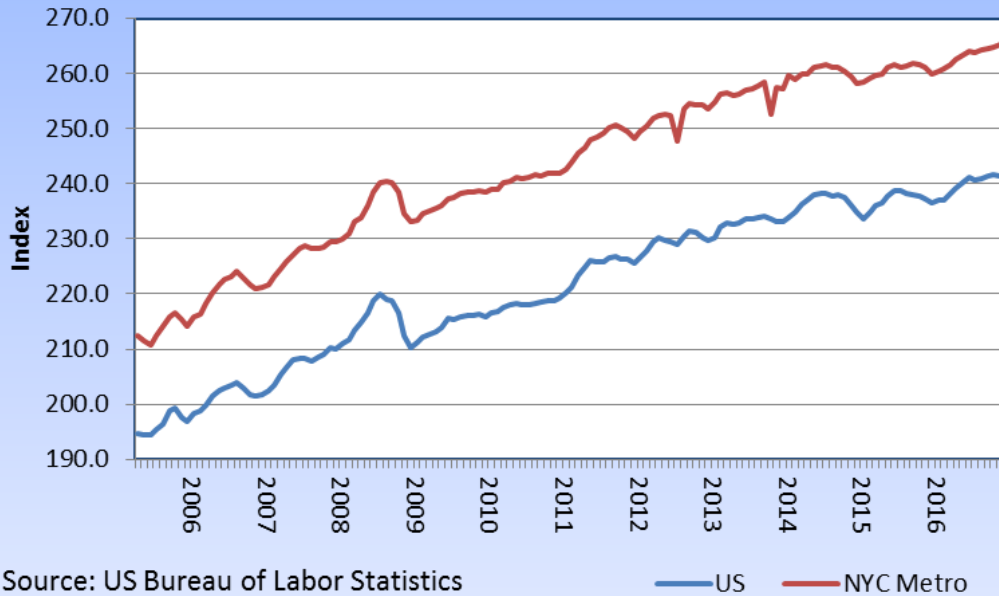
Weekly Hours and Earnings for NYS Manufacturing Production Workers		
	Hours	Earnings
December 2016	39.4	\$789.58
November 2016	39.8	\$789.6
Change from last month	-0.4	\$0.0
December 2015	40.5	\$778.82
Change from last year	-1.1	\$10.8

**About the Data:** Weekly hours and earnings data comes from the Department of Labor’s monthly Current Employment Survey of 18,000 employers. It measures the length of the work week, including overtime, for workers involved in the production of goods.



# New York State Economic Indicators Dashboard

## Consumer Price Index, All Urban Consumers



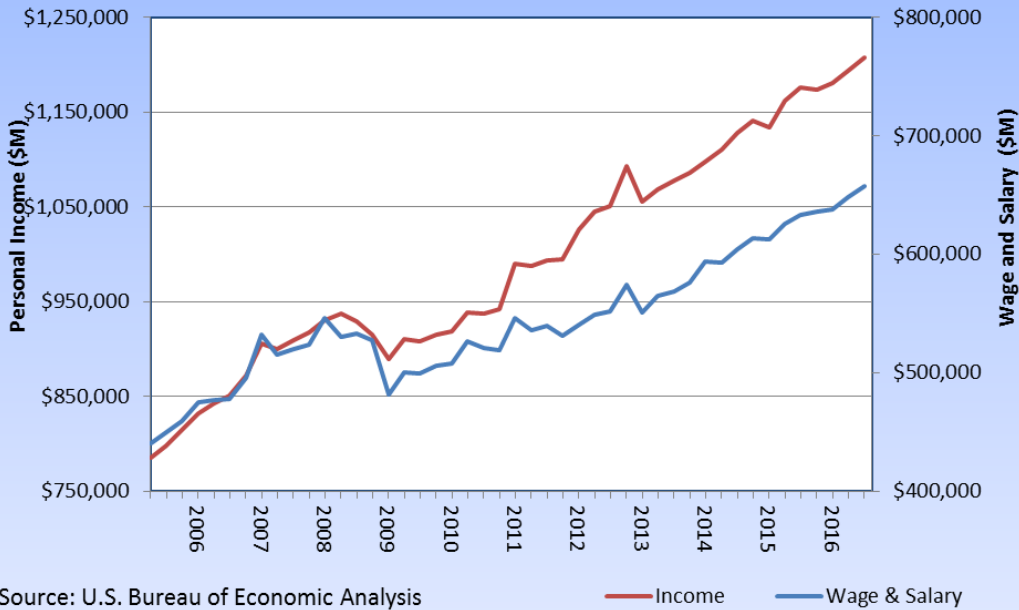
Consumer Price Index for All Urban Consumers (unadjusted)		
	NYC Metro	US
December 2016	265.4	241.4
November 2016	265.2	241.4
December 2015	259.9	236.5

**About the Data:** The Consumer Price Index is prepared monthly by the U.S. Bureau of Labor Statistics. The CPI measures the cost of a market basket of goods and services purchased, in this case, by urban consumers. The major categories include food and beverages, housing, apparel, transportation, medical care, recreation, education and communication, and other goods. The CPI is not available for local areas. (1982 – 1984 = 100)



# New York State Economic Indicators Dashboard

**Personal Income and Wage & Salary Disbursements, New York State**



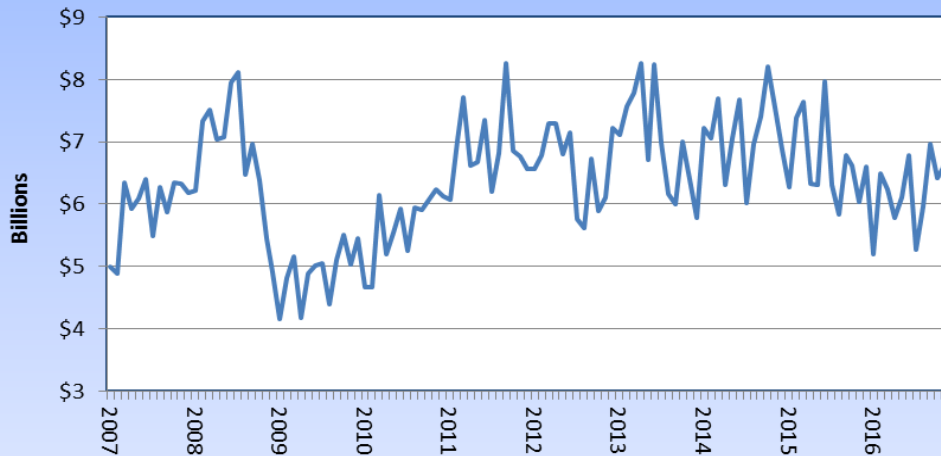
NYS Personal Income and Wage & Salary Disbursements (\$ Millions)		
	Income Disbursements	
Third Quarter 2016	\$1,208,213	\$657,929
Second Quarter 2016	\$1,193,226	\$648,317
Change from last quarter	1.3%	1.5%
Third Quarter 2015	\$1,175,803	\$633,386
Change from last year	2.8%	3.9%

**About the Data:** Aggregate personal income and wage and salary disbursements are prepared quarterly by the U.S. Bureau of Economic Analysis. Aggregate personal income is the income that is received by or on behalf of all the individuals who live in the State. Wage and salary disbursements consists of the money paid to employees, including corporate officers' salaries and bonuses, commissions, pay-in-kind, incentive payments, and tips.



# New York State Economic Indicators Dashboard

## Value of All New York Merchandise Exports



Source: WISER Trade Statistics

## Value of All New York Merchandise Exports

	Value (Million)
November 2016	\$6,616
October 2016	\$6,413
Change from last month	3%
November 2015	\$6,026
Change from last year	10%

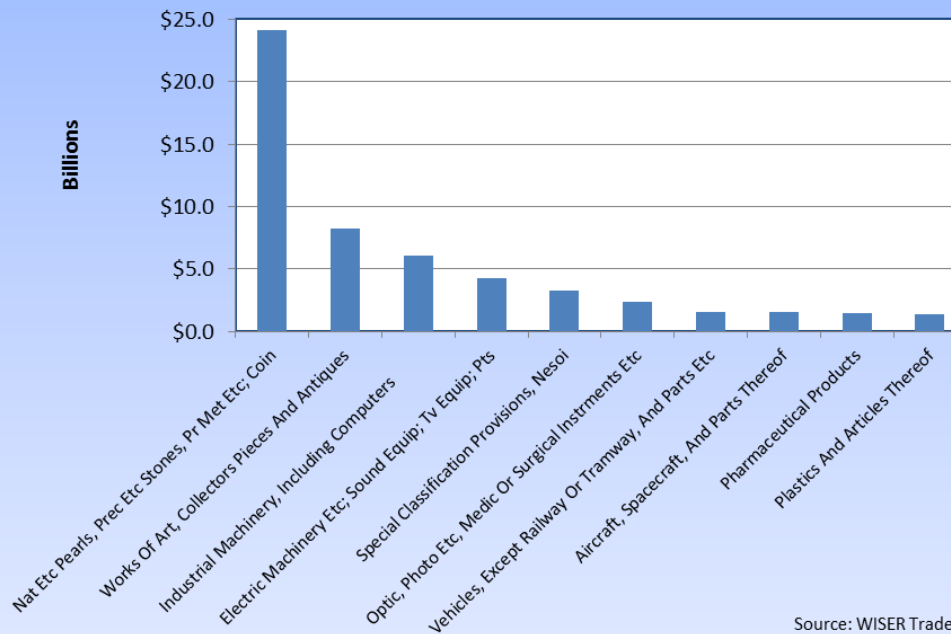
**About the Data:** Data are supplied by WISER Trade based on the U.S. Department of Commerce, Census Bureau, State Origin of Movement Series (OM). The OM series comes from documentation filed by the exporter with U.S. Customs. This series is defined as 1) the state where the product began its journey to the point of export, or 2) the state of consolidation of shipments, or 3) the state of greatest value in the case of consolidation, or 4) the state of a foreign trade zone.

The OM state provides a close approximation to state of production for manufactured goods. It is not very reliable for certain agricultural and other non-manufactured goods because they can be credited to the major port states. For manufactured goods it may also capture the state of consolidation or the state of a broker or wholesaler.



# New York State Economic Indicators Dashboard

### Value of New York Merchandise Exports by Commodity, November 2016 YTD



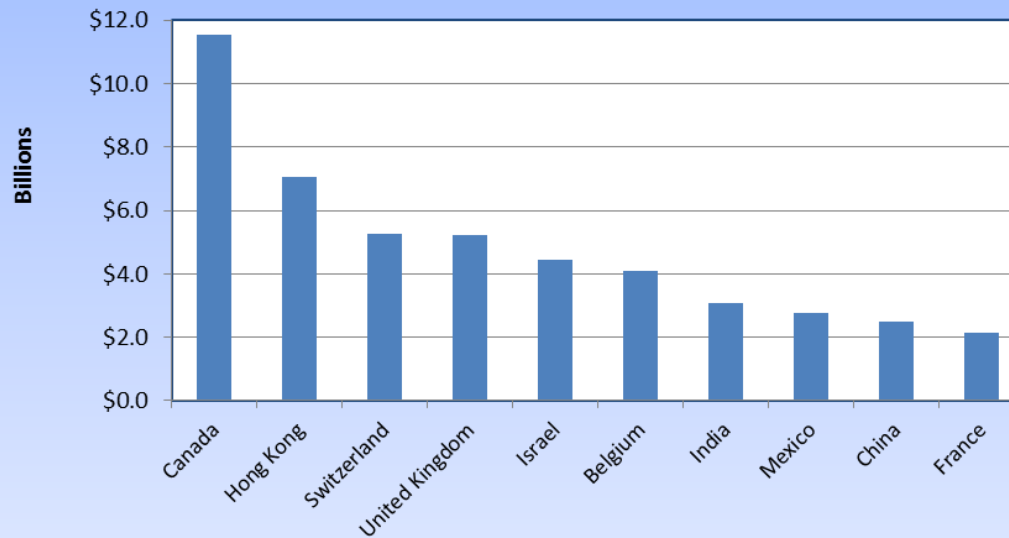
Source: WISER Trade Statistics

**About the Data:** Data are supplied by WISER Trade based on the U.S. Dept. of Commerce, Census Bureau, State Origin of Movement Series (OM). The OM series comes from documentation filed by the exporter with U.S. Customs. This series is defined as 1) the state where the product began its journey to the point of export, or 2) the state of consolidation of shipments, or 3) the state of greatest value in the case of consolidation, or 4) the state of a foreign trade zone. The OM state provides a close approximation to state of production for manufactured goods. It is not very reliable for certain agricultural and other non-manufactured goods because they can be credited to the major port states. For manufactured goods it may also capture the state of consolidation or the state of a broker or wholesaler.



# New York State Economic Indicators Dashboard

**New York's Top 10 Trading Partners  
by Value of Merchandise Exports,  
November 2016 YTD**



Source: WISER Trade Statistics

**About the Data:** Data are supplied by WISER Trade based on the U.S. Dept. of Commerce, Census Bureau, State Origin of Movement Series (OM). The OM series comes from documentation filed by the exporter with U.S. Customs. This series is defined as: 1) the state where the product began its journey to the point of export, or 2) the state of consolidation of shipments, or 3) the state of greatest value in the case of consolidation, or 4) the state of a foreign trade zone. The OM state provides a close approximation to state of production for manufactured goods. It is not very reliable for certain agricultural and other non-manufactured goods because they can be credited to the major port states. For manufactured goods it may also capture the state of consolidation or the state of a broker or wholesaler.