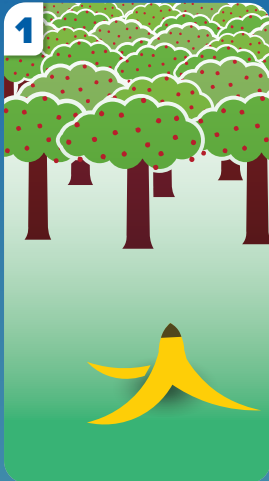
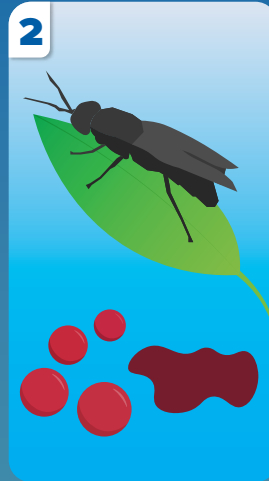


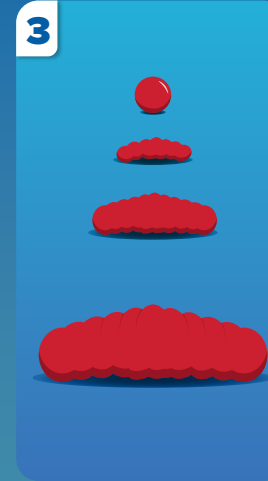
Creating a Sustainable Protein Source



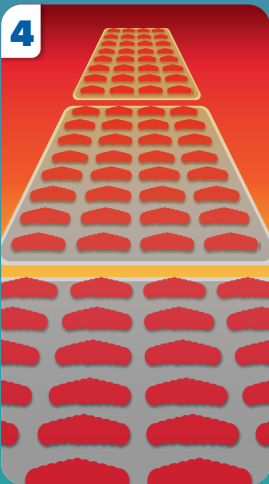
1 Food Waste Collected
Food waste is collected and pasteurized off-site to create feed for Black Soldier fly larvae.



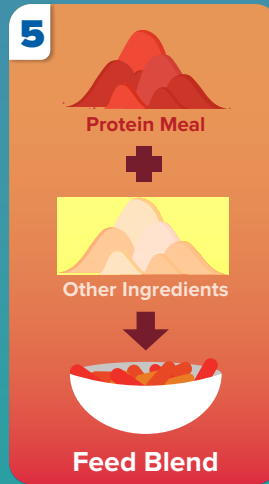
2 Preparing & Loading
Black Soldier Fly eggs are laid and hatched while bedding and food is prepared for the soon-to-be larvae.



3 Growing & Feeding
After hatching, larvae are ready to start growing. They are fed the food waste which supplies the nutrition needed for good, efficient growth. Allow 12 days larvae growth.



4 Drying & Processing
After 12 days the larvae are ready to move to the dryer. Once dried they are separated from their bedding and pressed to separate protein from oil.



5 Protein Meal to Feed
Once processed, the protein meal and oil are mixed with other ingredients to form aquaculture feed blend.



6 Impact

- ✓ Jobs Created
- ✓ Wild Fish Saved
- ✓ Local Economy Supported
- ✓ GHG Emissions Avoided
- ✓ Sustainable Protein Created