



The State University  
of New York

**SUNY START-UP NY**  
**Campus Plan for Designation of Tax-Free Area(s) Memorandum**  
**(CPM)**

To: SUNY Chancellor

From: **Per Stromhaug**

Re: **Binghamton University** Campus Plan for Designation of Tax-Free Area(s) ("Campus Plan")

Date: **09/14/2023**

**For campus Office of the President:**

The arrangement documented in the attached Campus Plan is aligned to the academic mission of Binghamton University and in accordance with all SUNY policies, procedures, and guidelines.

  
Signature of campus President

**Harvey Stenger**  
Print Name

**-----FOR SUNY SYSTEM ADMINISTRATION USE ONLY-----**

**For SUNY's START-UP NY Proposal Review Team Co-Chair:** It is recommended by the SUNY START-UP NY Proposal Review Team that SUNY approve/reject the attached Campus Plan:

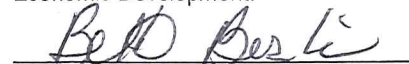
  
Proposal Review Team Co-Chair

**10/10/2023**  
Date

**Karen Bee-Donohoe**  
Print Name

**For SUNY Office of the Chancellor:**

The attached Campus Plan is hereby approved/rejected for campus submission to the NYS Commissioner of Economic Development.

  
Signature of the Chancellor or designee

**10/12/23**  
Date

**Beth Berlin**  
Print Name



To: Hope Knight, President, CEO, and Commissioner, Empire State Development, NYS Department of Economic Development  
From: Harvey Stenger, Binghamton University President, State University of New York  
Re: Binghamton University's Campus Plan for Designation of Tax-Free Area(s)  
Date: 09/14/2023

---

I, President **Stenger** of **Binghamton University** hereby certify the following:

- a.) we have provided a copy of the enclosed Campus Plan for Designation of Tax-Free NY Area, to the municipality or municipalities in which the proposed Tax-Free NY Area is located, local economic development entities, the applicable faculty senate, union representatives, and student government at least 30 days prior to submitting the plan to you and attached evidence of submission herewith; and
- b.) we comply with Public Officers Law Section 74; State University of New York's Policy on Conflict of Interest; and the Research Foundation's Conflict of Interest Policy and Guidelines for the Management of Conflicts of Interest; and attached copies of the policies and/or guidelines herewith; and
- c.) we comply with the Commissioner's rules and guidelines on anticompetitive behavior (NY EDL, art. 21, sect. 440); and
- d.) we are aware of the non-governmental use limitations associated with state issued tax exempt bonds and if our proposed Tax-Free NY Area was financed with tax exempt bonds, we will: 1.) make potential businesses aware of these limitations when marketing property; and 2.) take appropriate steps to ensure that non-governmental use of property funded with tax-exempt bonds will not jeopardize the tax exempt status of state issued bonds; and
- e.) we consulted with the municipality or municipalities in which such land or space is located prior to including such space or land in the proposed Tax-Free NY Area and we have given preference to underutilized properties; and
- f.) we have not relocated or eliminated any academic programs, any administrative programs, offices, housing facilities, dining facilities, athletic facilities, parking, or any other facility, space or program that actively serves students, faculty or staff in order to create vacant land or space to be designated as a Tax-Free NY Area; and
- g.) the information contained in the enclosed application is accurate and complete.

  
\_\_\_\_\_  
PRESIDENT'S SIGNATURE

09/14/23  
\_\_\_\_\_  
DATE

Attachments/Enclosures:

- 1.) Tax-Free Area Plan with Polygon shapefile of campus area (if available) and/or point data of vacant space (if available), **OR** outline and shaded delineation of proposed tax-free area on a campus aerial photo and/or campus map shaded to indicate land or building containing proposed tax-free space, and floor plans of building space with designated space clearly labeled and shaded.
- 2.) Excel spreadsheet of property to be designated
- 3.) Applicable conflict of interest policies
- 4.) Evidence of submission of Tax-Free Area Plan to interested parties



## START-UP NY CAMPUS PLAN FOR DESIGNATION OF TAX-FREE AREA(S)

Campus Name: Binghamton University, State University of New York  
Campus Contact Name: Per Stromhaug  
Campus Contact Title: Assistant Vice President  
Campus Contact E-mail: per@binghamton.edu  
Campus Contact Phone: 607-777-5873

### ***THE TAX-FREE NY AREA PLAN SHALL BE DEVELOPED BY THE CAMPUS TEAM AND PROVIDE THE FOLLOWING REQUIRED INFORMATION:***

- 1) Specification or identification of space or land proposed for designation as a Tax-Free NY Area identifying the following:
  - i. Provide the name and address of the SUNY, CUNY or community college seeking approval as a Sponsor, the address of the space or land proposed for designation as a Tax-Free NY Area, and a written description of the physical characteristics of the area for designation.

Name: <b>Binghamton University, State University of New York</b>
Campus Address: <b>PO Box 6000, Binghamton, NY-13902-6000</b>
Address(es) of Proposed Tax-Free NY Area(s): <b>85 Murray Hill Road, Vestal, NY-13850 (campus)</b> <b>65 Murray Hill Road, Vestal, NY-13850 (campus)</b> <b>45 Murray Hill Road, Vestal NY-13850 (campus)</b> <b>120 Hawley Street, Binghamton, NY-13901 (campus)</b> <b>59-61 Court Street, Binghamton, NY-13901 (campus)</b> <b>4104 Vestal Road, Vestal, NY-13850 (off campus)</b> <b>100 Oakdale Road, Johnson City, NY-13790 (off campus)</b> <b>701 Innovation Way (formerly Azon Rd), Johnson City, NY-13790 (off campus)</b> <b>720 Innovation Way (formerly Azon Rd), Johnson City, NY-13790 (off campus)</b> <b>300 Plaza Drive, Vestal NY-13850 (off campus)</b> <b>Bldg. 53, 1301 Clark Street, Endicott. NY-13760 (off campus)</b> <b>75 Griswold Street, Binghamton, NY-13904 (off campus)</b> <b>Bldg. 48, 1301 Clark Street, Endicott. NY-13760 (off campus)</b>

Description of Physical Characteristics of Proposed Tax-Free NY Area(s):

**Murray Hill Road:** 7,496 sq. ft. office space in the Start-Up Suite Pre-Incubator on the Binghamton University campus, which is part of the Southern Tier Regional Hotspot. The offices are housed within three of the buildings at the Innovative Technologies Complex:

The Biotechnology Building **65 Murray Hill Road** (SU-107-1-B-0136-000-A); 3,151 SF of office space;

The Engineering & Science Building **85 Murray Hill Road** (SU-107-1-B-0148-000-A); 2,583 SF of office space;

And the Center of Excellence Building **45 Murray Hill Road** (SU-107-1-B-0156-000-A); 1,762 SF of office space, in addition to 3,825 SF of laboratory space in the Start-Up Suite Pre-Incubator (2,217 sq. ft. SU-107-1-B-0156-001-A, and 1,608 sq. ft. SU-107-1-B-0156-002-A). Companies in the Start-Up Suite have access to shared services, conference rooms and other common areas.

**120 Hawley Street:** Several adjoining lots in downtown Binghamton combined into a 2.1 acre parcel (SU-107-1-L-0176-000-A) housing the 34,064 sq. ft. Southern Tier High Technology Incubator (SU-107-1-B-0175-000-A). There will be opportunities for additional development on the site under the Start-Up NY program. The lots were previously used for parking, and also contained a few vacant structures that have been removed.

**59-61 Court Street, Binghamton, NY-13901:** 4,300 sq. ft. of second floor will be used for the BCIDA Incubator affiliated with the Start-Up Suite at Binghamton University and the Southern Tier Regional Hotspot, offering office and co-work space as well as shared services, conference room and other common areas. (SU-107-2-B-1002-000-A).

**4104 Vestal Road, Vestal, NY-13850:** 3,172 sq. ft. vacant office space (SU-107-2-B-1001-000-A).

**100 Oakdale Road, Johnson City, NY-13790:** 77,233 sq. ft. vacant manufacturing space (SU-107-2-B-1003-000-A (35,491 sq. ft.) and SU-107-2-B-1003-001-A (41,742 sq. ft.))

**701 Innovation Way** (formerly Azon Rd), **Johnson City, NY-13790** (off campus): 24,788 sq. ft. of vacant office space encompassing most of the first and second floor of the building (SU-107-2-B-1004-000-A).

**720 Innovation Way** (formerly Azon Rd), **Johnson City, NY-13790** (off campus): 52,369 sq. ft. of vacant manufacturing space encompassing most of the building (SU-107-2-B-1005-000-A).

**300 Plaza Drive, Vestal NY-13850** (off campus): 5,911 sq. ft. of vacant office space encompassing the second floor of the building (SU-107-2-B-1006-000-A).

**Bldg. 53, 1301 Clark Street, Endicott. NY-13760** (off campus): 4,200 sq. ft. of manufacturing space in building (SU-107-2-B-1007-000-A).

**75 Griswold Street, Binghamton, NY-13904** (off campus): 5,580 sq. ft. building containing manufacturing and warehouse space as well as offices (SU-107-2-B-1008-000-A).

**Bldg. 48, 1301 Clark Street, Endicott. NY-13760** (off campus): 4,820 sq. ft. of office space in building (SU-107-2-B-1009-000-A) and 6,090 sq. ft. vacant manufacturing and office space (SU-107-2-B-1010-000-A).

- ii. Complete the Excel spreadsheet template provided with this document, noting the instructions on page 2. Include the official SUNY Physical Space Inventory (PSI) building number and a clear description of the spaces in the building or floor (when the entire floor is under consideration), or floor/wing (with outer rooms defining the space specifically listed). Include only properties sought to be designated now and exclude potential sites that may be considered in the future (see 2a below). Attach the completed spreadsheet to this plan.
- iii. Provide also a representation of each proposed site drawn in AutoCAD on a scaled campus map with boundaries drawn clearly. Two versions should be created; one including an imbedded layer from Google Earth or other aerial photograph of the property. The second version should exclude the photographic imagery. Each parcel under consideration must have a unique alpha numeric identifier, clearly labeled on each plan which ties to identifiers in the Excel spreadsheet. If digital files containing Polygon shapefile that delineates area for designation are available, provide these as well. Attach these materials to this plan.
- iv. Provide a campus map with each proposed building shaded. Label each building with the official building number as listed in the SUNY Physical Space Inventory (PSI) along with the building name. For each building shaded and labeled, include floor plans of all areas under consideration with the specific spaces clearly shaded and labeled with official PSI room numbers. If digital files containing Point shapefiles that provide locations of area for designation are available, provide these as well. Attach these materials to this plan.

- 2) The total square footage of the space and/or acreage of land proposed for designation as a Tax-Free NY Area is:

233,848 sq. ft. of space and 2.1 acres of land

- 2a) If applicable: You may include here a description of any potential space or acreage of land that you may seek to designate as a Tax-Free NY Area under the START-UP NY Program in the future. This may include campus property that may become vacant, or other properties in your community that are not currently part of your campus but may be desirable for a company partner and with which you may consider an affiliation if an appropriate partner is identified. Do not include these properties in the Excel spreadsheet.

30 Charles Street Business Park, Binghamton  
 1701 North Street, Endicott, Phoenix Campus, several buildings available  
 Airport Corporate Center, Johnson City  
 201 Glendale Drive, Glendale Technology Park, Endicott  
 200 Court Street, Binghamton (100,000 sq. ft.)  
 1901 Vestal Parkway, Vestal, NY-13850 (25,000 sq. ft. office complex)

157 Oakdale Road, Johnson City  
1901 North Street, Endicott, former Endicott Forging site  
219 Vestal Avenue, Endicott former K-Mart Plaza site  
Former BAE site, Johnson City (27 acres)

2b) If applicable: The total square footage of the space or acreage of land that you may propose to designate as a Tax-Free Area as identified in 2a, if known.

TBD

3) Provide a description of the type of business or businesses that may locate in the area identified in #1

Through Start-Up NY, Binghamton University will seek to help start, attract and partner with companies that align with our academic and strategic missions' focus on the student, and that augment the University's academic strengths and research areas.

Furthermore, in line with the strategic plan of the Southern Tier Regional Economic Development Council, Binghamton University is partnering with SUNY Broome Community College, Cornell University and other colleges in the region to develop a strategy for maximizing the impact of Start-Up NY throughout the Southern Tier. In collaboration with local economic and industrial development organizations and the chamber of commerce, the competencies and qualities found in the Southern Tier will be marketed to attract and match companies to the appropriate resources and facilities on the campuses and in the communities. The Vision statement of the Southern Tier Regional Economic Development Council reads:

*"Building on a strong foundation of existing businesses and higher education institutions the Southern Tier region uses a collaborative approach to leverage its globally competitive advantages to attract talent and investment for the development of industry clusters. Our focus will be on increasing the size and prosperity of the region's workforce through new business creation based on high-technology discoveries and other entrepreneurship activities, while ensuring healthy communities and protecting the natural beauty and resources of the region."*

Moreover, the objectives of the Southern Tier Regional Incubator Strategy adopted by the Southern Tier Regional Economic Development Council are to

- a) *increase the amount of technology being commercialized by regional research sources;*
- b) *increase the number of companies being formed in the region;*
- c) *increase the success rate of companies being formed; and*
- d) *increase the number of students educated in the region who then remain in the region to start companies and join startups.*

Binghamton University already works extensively with industry through our New York State Center of Excellence, the Small Scale Systems and Integrated Packaging Center (S3IP), the

Thomas J. Watson School of Engineering and Applied Science's outreach programs such as the Watson Institute for Systems Excellence (WISE), the Strategic Partnership for Industrial Resurgence (SPIR), and other forms of engagement, to provide students with extensive experiential learning and applied research opportunities, both on campus and at the facilities of industry partners. The Start-Up NY program adds another dimension to these efforts, for example by incentivizing industry partners to co-locate within Binghamton University facilities or in proximity to campus. The initial focus areas for recruitment align with the focus areas of the S3IP, the Start-Up Suite and the Southern Tier High Technology Incubator. They are also congruent with the strategic plan of the Southern Tier Economic Development Council: companies that do research, development and manufacturing within energy efficiency and renewable energy, electronics packaging and microelectronics, nanotechnology, and health sciences sectors. Binghamton University has client companies in the Start-Up Suite Incubator and is in discussions with other start-up companies and with faculty, staff, students, alumni and other entrepreneurs about starting companies within these fields. Other areas include information gathering and analysis ("big data"), market and financial analytics, tools for human resources and social entrepreneurship, media content and technologies, cyber and computer security and monitoring, simulation platforms, health assessment tools and services, and life sciences and medical applications including pharmaceuticals. The companies sought as partners through the Start-Up NY program will further the academic mission of the University by providing opportunities for

- a) internships, externships and other external student learning experiences;*
- b) research and development collaborations that include faculty, staff or students;*
- c) faculty, staff and students to apply for and win grants and contracts, either from the company or from other sources in collaboration with the company;*
- d) employment for graduates;*
- e) increased utilization of University assets, for example of Center of Excellence facilities and other core research and development resources;*
- f) commercialization of University research and technologies through licensing or other partnerships; or*
- g) mentoring, coaching or other means of intellectual or financial assistance of University entrepreneurs and University start-up companies.*

For prospective partners in the areas such as **public service and civic engagement**, there is a strong alignment with a number of academic programs offered by the **College of Community and Public Affairs**. These include, but are not limited to, Community Research in Action, PhD (NYSED 35984, 39567), Mathematics Adolescent Education MAT, MSED (NYSED 24790, 39626, 24805).

For prospective partners in the areas such as **healthcare, health education, and health promotion**, there is a strong alignment with a number of academic programs offered by



the **Decker College of Nursing and Health Sciences**. These include, but are not limited to, Nursing, BS (NYSED 41640, 03113, 38914); Community Health Nursing, MS (NYSED 19649, 92078); Family Psychiatric Mental Health Nursing, MS (NYSED 33432); Family Nursing, MS (NYSED 33480, 76112); and Adult-Gerontological Nursing, MS (NYSED 33481, 92079). For prospective partners in the areas such as **science and mathematics, and the social sciences**, there is a strong alignment with a number of academic programs offered by the **Harpur College of Arts and Sciences**. These include, but are not limited to, Materials Science and Engineering, MS (NYSED \*27743, \*31139); Biological Science, MA, MS, MBA, PhD (NYSED 04908, 26672, 26673, 82366, 82367, 05821); Mathematical Science, MAT, MBA, PhD (NYSED 31340, 82393, 82394, 11334); Physics, MBA, Physics (NYSED 82395, 82396, 33274); Chemistry, BA, MA, MS, MBA, PhD (03129, 82397, 82398, 05397, 84233, 09742); Geological Science, MBA, PhD (NYSED 82399, 82440, 10084); Psychology, MBA (NYSED 82403); Cognitive Psychology, PhD (NYSED 91584); Behavioral Neuroscience, PhD (NYSED 91585); Economics, MBA, PhD (NYSED 82407, 82408, 10121); Environmental Studies, MBA (NYSED 82361)

*\*Shared with the Thomas J. Watson College of Engineering and Applied Science*

For prospective partners in the areas such as **health science**, there is a strong alignment with a number of academic programs offered by the **School of Pharmacy and Pharmaceutical Sciences**. These include but are not limited to, Pharmaceutical Sciences MS, PhD (NYSED 41502, 41501).

For prospective partners in the areas such as **data analytics, management, and environmental health** there is a strong alignment with a number of academic programs offered by the **School of Management**. These include, but are not limited to, Data Analytics, MS (NYSED 39894); Business Administration, MBA (NYSED 03092, 82370); Management, PhD (NYSED 91371); Professional Science Management, Adv Crt (NYSED 33422); Sustainable Communities, MA, MS (NYSED 37845, 37855); Public Health, MPH (NYSED 39060).

For prospective partners in the areas such as **research and development, product design and redesign, product development, process design and optimization, energy storage and clean energy, information systems design and development, and health systems design and optimization**, there is strong alignment with a number of academic programs offered by the **Thomas J. Watson College of Engineering and Applied Science**. These include, but are not limited to, Biomedical Engineering MS, PhD (37255, 32188, 32147); Computer Science, MS, PhD (NYSED 26362, 87486, 19092); Complex Systems Science and Engineering Adv Crt (NYSED 35767); Cybersecurity ADV CRT (NYSED 40055); Systems Science, PhD (NYSED 19366); Electrical and Computer Engineering, MS, MBA, PhD (25563, 25564, 82484, 28328, 19364); Healthcare Systems Engineering, MS (NYSED 39728); Materials Science and Engineering, MS, PhD (NYSED 27270, \*27743, \*31139,

27269); Industrial and Systems Engineering, MS, PhD (NYSED 30682, 82485, 32144, 30683); Information Systems, MS (NYSED 42040); Materials Engineering, PhD (NYSED 27271); Materials Science and Engineering, MS (NYSED 27743); Mechanical Engineering, MS, PhD (32845, 82487, 19365). \*Shared with the Harpur College of Arts and Sciences.

- 4) Provide a description of the campus academic mission, and explain how the businesses identified in #3 will align or further the academic mission of the university or college.

### **ACADEMIC MISSION**

Binghamton University defines itself as a premier public university. As such, the University's mission is to enrich the lives of people through discovery, education, and engagement. The University identifies its academic mission as follows:

*"Binghamton University is a premier public university dedicated to enriching the lives of people in the region, state, nation and world through discovery and education and to being enriched by partnerships with those communities."*

### **STRATEGIC MISSION**

The University's strategic plan identifies a commitment to sustain excellence during the period of transition, blending traditional and innovative approaches to create effective actions. Its vision is as follows:

*"Binghamton will distinguish itself as a stellar institution of higher education, one that combines an international reputation for graduate education, research, scholarship and creative endeavor with the best undergraduate programs available at any public university."*

### **ACADEMIC STRENGTHS**

Binghamton offers 130 academic areas of study for undergraduates and 70 for graduate students. The campus currently has over 18,000 students, including 3,748 graduate students, and 792 fulltime faculty.

Binghamton's programs are housed within six schools:

*Harpur College of Arts and Sciences'* main goal is to deliver the highest quality education possible in a full range of liberal arts studies, with a curriculum designed to strengthen intellectual skills and general knowledge. Sample programs and SEC codes aligning with potential partners in the Start-Up New York TFA include: Materials Science and Engineering, MS (NYSED \*27743, \*31139); Biological Science, MA, MS, MBA, PhD (NYSED 04908, 26672, 26673, 82366, 82367, 05821); Mathematical Science, MAT, MBA, PhD (NYSED 31340, 82393, 82394, 11334); Physics, MBA, Physics (NYSED 82395, 82396, 33274); Chemistry, BA, MA, MS, MBA, PhD (03129, 82397, 82398, 05397, 84233, 09742); Geological Science, MBA, PhD

(NYSED 82399, 82440, 10084); Psychology, MBA (NYSED 82403); Cognitive Psychology, PhD (NYSED 91584); Behavioral Neuroscience, PhD (NYSED 91585); Economics, MBA, PhD (NYSED 82407, 82408, 10121) ; Environmental Studies, MBA (NYSED 82361)

*\*Shared with the Thomas J. Watson College of Engineering and Applied Science.*

*School of Management* provides unique undergraduate programs in accounting and management, which stress analytical capabilities, experiential learning and integration across functional areas, communication skills and global and ethical environment. Sample programs and SEC codes aligning with potential partners in the Start-Up New York TFA include: Data Analytics, MS (NYSED 39894); Business Administration, MBA (NYSED 03092, 82370); Management, PhD (NYSED 91371); Professional Science Management, Adv Crt (NYSED 33422); Sustainable Communities, MA, MS (NYSED 37845, 37855); Public Health, MPH (NYSED 39060).

*Decker College of Nursing and Health Sciences* has as mission to disseminate and advance knowledge about human health care, health promotion and the treatment of illness in individuals, families and communities, with an emphasis on underserved and rural populations Sample programs and SEC codes aligning with potential partners in the Start-Up New York TFA include: Nursing, BS (NYSED 41640, 03113, 38914); Community Health Nursing, MS (NYSED 19649, 92078); Family Psychiatric Mental Health Nursing, MS (NYSED 33432); Family Nursing, MS (NYSED 33480, 76112); and Adult-Gerontological Nursing, MS (NYSED 33481, 92079).

*Thomas J. Watson College of Engineering and Applied Science* offers bachelor's degrees, master's degrees, and doctoral programs in five fields of study: Bioengineering; Computer Science; Electrical and Computer Engineering; Mechanical Engineering; and, Systems Science & Industrial Engineering. Sample programs and SEC codes aligning with potential partners in the Start-Up New York TFA include: Biomedical Engineering MS, PhD (37255, 32188, 32147); Computer Science, MS, PhD (NYSED 26362, 87486, 19092); Complex Systems Science and Engineering Adv Crt (NYSED 35767); Cybersecurity ADV CRT (NYSED 40055); Systems Science, PhD (NYSED 19366); Electrical and Computer Engineering, MS, MBA, PhD (25563, 25564, 82484, 28328, 19364); Healthcare Systems Engineering, MS (NYSED 39728); Materials Science and Engineering, MS, PhD (NYSED 27270, \*27743, \*31139, 27269); Industrial and Systems Engineering, MS, PhD (NYSED 30682, 82485, 32144, 30683); Information Systems, MS (NYSED 42040); Materials Engineering, PhD (NYSED 27271); Materials Science and Engineering, MS (NYSED 27743); Mechanical Engineering, MS, PhD (32845, 82487, 19365).

*\*Shared with the Harpur College of Arts and Sciences.*

*The College of Community and Public Affairs (CCPA)* provides undergraduate degree programs in human development and graduate programs in public administration, social work and student affairs administration. *The Graduate School* offers master's degree programs in Adolescence

Education, Childhood Education, Literacy Education, and Special Education. All of these programs are approved for New York state teaching certification. Sample programs and SEC codes aligning with potential partners in the Start-Up New York TFA include: Community Health Nursing, MS (NYSED 19649, 92078); Family Psychiatric Mental Health Nursing, MS (NYSED 33432); Family Nursing, MS (NYSED 33480, 76112); and Adult-Gerontological Nursing, MS (NYSED 33481, 92079).

*School of Pharmacy and Pharmaceutical Sciences (SOPPS)* offers Doctor of Pharmacy degree and a doctoral program leading to a PhD in pharmaceutical sciences. The pharmacy school educates students in evidence-based, patient-centered pharmaceutical care and innovative research within three departments: Health Outcomes and Administrative Sciences, Pharmaceutical Sciences and Pharmacy Practice. Sample programs and SEC codes aligning with potential partners in the Start-Up New York TFA include: Pharmaceutical Sciences MS, PhD (NYSED 41502, 41501).

## RESEARCH AREAS

Binghamton University research focuses on issues of societal, technological, economic, cultural, intellectual and aesthetic significance — all issues critical to our future — through thoughtful development of six transdisciplinary areas of excellence:

*Citizenship, Rights, and Cultural Belonging* seeks new understandings of the ideas of citizenship, rights and cultural belonging and supports inquiries that emphasize their cultural, ethnic, gendered, sexual, biological and transnational facets.

*Health Sciences* will help to ensure that the latest innovations in healthcare travel speedily from lab bench to bedside by integrating cutting-edge biomedical research with systems science, industrial engineering and microelectronic device development.

*Material and Visual Worlds* has scholars from a wide variety of disciplines – the social sciences, the humanities and the fine arts – and seeks to analyze things and images as gatherings of technologies, materials, histories and interactions extending through space and time.

*Smart Energy* will build upon existing strengths in alternative energy research such as solar and thermoelectric energy harvesting, energy storage, energy efficiency in electronic systems, and sensor development for energy resource management.

*Sustainable Communities* will help us understand what it takes to model, build and maintain sustainable communities. Collaboration among faculty from many disciplines enables a deeper understanding of past, present and future trends in society and nature.

*Data Science* serves as a central hub for data-centered research, a collaborative group of data scientists from across campus who are at the leading edge of the data science revolution within

their own disciplines. Data Science seeks to foster collaboration on identification of significant problems, bridge between theory and applications, advance techniques to gather and interpret data, and address the urgent problems facing society.

### **NEW YORK STATE CENTER OF EXCELLENCE**

In addition to the teaching and research concentrations of its colleges and the transdisciplinary areas of excellence, Binghamton has unique strengths and capabilities resident in the New York State Center of Excellence, the Small Scale Systems Integration and Packaging Center (S3IP), which contains the following units and laboratories:

*The Integrated Electronics Engineering Center (IEEC)* is a New York State Center for Advanced Technology (CAT) in Electronics Packaging. The IEEC is dedicated to the advancement of electronic packaging technology and the electronics industry.

*The Center for Advanced Microelectronics Manufacturing (CAMM)* is the nation's first prototype research and development (R&D) facility in large-area flexible electronics.

*The Center for Autonomous Solar Power (CASP)* aims to reduce the cost of solar power and enhance energy efficiency by drawing on expertise from engineering, computer science, chemistry and physics.

*The Analytical and Diagnostics Laboratory (ADL)* is an interdisciplinary research facility that promotes high-tech commercialization of microelectronic technologies as well as life sciences research applications in medical areas.

*The Nanofabrication Laboratory (NLAB)* supports nano-scale research by providing state-of-the-art resources.

*The Center for Energy-Smart Electronic Systems (ES2)* is a National Science Foundation Industry/University Cooperative Research Center (I/UCRC) that aims to develop systematic methodologies for efficiently operating electronic systems including data centers.

*The NorthEast Center for Chemical Energy Storage (NECCES)* is a DOE funded international consortium dedicated to understanding and improving battery technology by researching new and current materials and reaction chemistries, and enabling new chemistries.

- 5) Provide a description of how participation by these types of businesses in the START-UP NY Program will generate positive community and economic benefits, including but not limited to:
- Increased employment opportunities;
  - Increased opportunities for internships, vocational training and experiential learning for undergraduate and graduate study;
  - Diversification of the local economy;
  - Environmental sustainability;
  - Increased entrepreneurship opportunities;

- Positive, non-competitive and/or synergistic links to existing businesses;
- Effect on the local economy; and
- Opportunities as a magnet for economic and social growth.

Start-Up NY will stimulate to the formation of partnerships between the campus and the companies that will create positive community and economic benefits by creating opportunities for:

- a) *job creation;*
- b) *commercialization of University technologies for public benefit;*
- c) *intellectual capital shared between the University and the company;*
- d) *access to business leaders by faculty, staff and students;*
- e) *public/private partnerships that enhance the attractiveness of the area for companies;*
- f) *enhanced teaching curricula;*
- g) *increased awareness of University programs and resources; and*
- h) *elevated brand of Binghamton University.*

In addition, Start-Up NY will help Binghamton University increase the overall economic activity in the region by

- a) *building an entrepreneurial ecosystem in the Greater Binghamton Area that fosters start-up company formation, recruiting start-up companies to the region, and catalyzing small companies to grow and expand into new areas and product lines;*
- b) *being a preferred partner for small-, medium- and large-sized companies by making available intellectual capital and high technology assets that will help regional companies expand existing business and create new business areas, and that will recruit companies to the region; and by*
- c) *providing a highly trained workforce for new and existing companies of all sizes.*

- 6) Provide a description of the process the Sponsor (campus) will follow to select participating businesses. The description should identify the membership of any group or committee that may make recommendations, the final decision-maker, and the criteria that will be used to make decisions. This group or committee must include representation from faculty governance. The criteria may include some or all of the following:

**A. Academic and Research Alignment**

1. Is the business in an industry aligned with current and/or developing University research, scholarly, and creative activity?
2. Does the business provide experiential learning and workforce opportunities (e.g., internships, fellowships, full-time jobs) for students and graduates?
3. Does the business provide areas for partnership and advancement for faculty and students?
4. Will the business provide access to research instrumentation, tools, and/or equipment necessary to advance the academic and research mission?

5. Will the business fund scholarships, campus facilities or other academic services or amenities?
6. Will the business and/or its employees contribute to instruction or provide student mentoring?
7. Does the business offer the use of company resources, intellectual property or expertise to support the academic mission?

**B. Economic Benefit**

1. How many net new jobs will be created?
2. Is the business viable in both the short- and long-term?
3. Will the business attract private financial investment?
4. Does the business plan to make capital investments (e.g., renovation, new construction)?
5. Are the new jobs in critical areas of the economy?
6. How will the University financially benefit from the terms of the lease?

**C. Community Benefits**

1. Does the business have the support of one or more municipal or community entities?
2. Is the business recruiting employees from the local workforce?
3. Does the business invest in underserved, economically distressed regions?
4. Will the business rely on suppliers within the local and regional economy?

The following procedure will be followed at Binghamton University to select companies that may participate in the Start-Up NY program in the Greater Binghamton Area:

1. *Company will discuss with the Office of Entrepreneurship and Innovation Partnerships (E&IP) and the Small Business Development Center (SBDC) eligibility under the statute as well as the fit with the academic mission of the University. Discussions with faculty, staff and students will identify potential sponsors. Company submits application for space in the Start-Up Suite Pre-Incubator and/or for participation in the Start-Up NY program.*
2. *The application(s) will be endorsed or rejected by the Start-Up Committee appointed jointly by the Vice President for Research and the Faculty Senate Executive Committee. The endorsement will be based on a holistic review of academic and research benefits, economic benefits, and community benefits as described in 6A, 6B and 6C above. The Committee consists of nine members, whereof a minimum of six must be faculty and a minimum of two must be staff, and will if possible include a student nominated by the Student Association. Six members are required for a quorum and a minimum of four voting members must be faculty.*
3. *Endorsed applications will be forwarded to the Vice President for Research for review and approval.*
4. *Approved Start-Up NY Business applications will be forwarded to the Binghamton University President for review and approval.*

5. *Approved Start-Up NY Business Application will be submitted by the Binghamton University President to ESD.*
6. *Applications not rejected by ESD within 60 days are considered approved and the application becomes a contract between the University and the company.*

Annually, each company will submit a report on their progress in meeting their business and university engagement goals to be reviewed by the Start-Up Committee. The Committee will make a recommendation to continue, end or modify the relationship with the company. This recommendation will be made to the Vice President for Research and the President for consideration and action.



# PUBLIC OFFICERS LAW

## § 74. Code of ethics.

1. **Definition.** As used in this section: The term "**state agency**" shall mean any state department, or division, board, commission, or bureau of any state department or any public benefit corporation or public authority at least one of whose members is appointed by the governor or corporations closely affiliated with specific state agencies as defined by paragraph (d) of subdivision five of section fifty-three-a of the finance law or their successors.


The term "**legislative employee**" shall mean any officer or employee of the legislature but it shall not include members of the legislature.

2. **Rule with respect to conflicts of interest.** No officer or employee of a state agency, member of the legislature or legislative employee should have any interest, financial or otherwise, direct or indirect, or engage in any business or transaction or professional activity or incur any obligation of any nature, which is in substantial conflict with the proper discharge of his duties in the public interest.

3. **Standards.**

- a. No officer or employee of a state agency, member of the legislature or legislative employee should accept other employment which will impair his independence of judgment in the exercise of his official duties.
- b. No officer or employee of a state agency, member of the legislature or legislative employee should accept employment or engage in any business or professional activity which will require him to disclose confidential information which he by reason of his official position or authority.
- c. No officer or employee of a state agency, member of the legislature or legislative employee should disclose confidential information acquired by him in the course of his official duties nor use such information to further his personal interests.
- d. No officer or employee of a state agency, member of the legislature or legislative employee should use or attempt to use his or her official position to secure unwarranted privileges or exemptions for himself or herself or others, including but not limited to, the misappropriation to himself, herself or to others of the property, services or other resources of the state for private business or other compensated non-governmental purposes.
- e. No officer or employee of a state agency, member of the legislature or legislative employee should engage in any transaction as representative or agent of the state with any business entity in which he has a direct or indirect financial interest that might reasonably tend to conflict with the proper discharge of his official duties.
- f. An officer or employee of a state agency, member of the legislature or legislative employee should not by his conduct give reasonable basis for the impression that any person can improperly influence him or unduly enjoy his favor in the performance of his official duties, or that he is affected by the kinship, rank, position or influence of any party or person.

- g. An officer or employee of a state agency should abstain from making personal investments in enterprises which he has reason to believe may be directly involved in decisions to be made by him or which will otherwise create substantial conflict between his duty in the public interest and his private interest.
  - h. An officer or employee of a state agency, member of the legislature or legislative employee should endeavor to pursue a course of conduct which will not raise suspicion among the public that he is likely to be engaged in acts that are in violation of his trust.
  - i. No officer or employee of a state agency employed on a full-time basis nor any firm or association of which such an officer or employee is a member nor corporation a substantial portion of the stock of which is owned or controlled directly or indirectly by such officer or employee, should sell goods or services to any person, firm, corporation or association which is licensed or whose rates are fixed by the state agency in which such officer or employee serves or is employed.
4. **Violations.** In addition to any penalty contained in any other provision of law any such officer, member or employee who shall knowingly and intentionally violate any of the provisions of this section may be fined, suspended or removed from office or employment in the manner provided by law. Any such individual who knowingly and intentionally violates the provisions of paragraph b, c, d or i of subdivision three of this section shall be subject to a civil penalty in an amount not to exceed ten thousand dollars and the value of any gift, compensation or benefit received as a result of such violation. Any such individual who knowingly and intentionally violates the provisions of paragraph a, e or g of subdivision three of this section shall be subject to a civil penalty in an amount not to exceed the value of any gift, compensation or benefit received as a result of such violation.

 <p>Category: HR / Labor Relations Legal and Compliance</p> <p>Responsible Office: <a href="#">University Counsel</a></p>	<p>Policy Title: Conflict of Interest Document Number: 6001</p> <p>Effective Date: October 01, 1995</p> <p>This policy item applies to: State-Operated Campuses</p>
--	---

## Table of Contents

[Summary](#)

[Policy](#)

[Definitions](#)

[Other Related Information](#)

[Procedures](#)

[Forms](#)

[Authority](#)

[History](#)

[Appendices](#)

---

## Summary

Faculty and staff of the State University of New York (University) are encouraged to foster an atmosphere of academic freedom by promoting the open and timely exchange of scholarly knowledge independent of personal interests and are required to avoid conflicts of interest. Where potential or actual conflicts exist, faculty and staff are expected to consult with appropriate University officers and abide by University policy. This policy represents a restatement of existing University policy and pertinent state and federal law and regulations.

---

## Policy

Faculty and staff of the State University of New York (University) are encouraged to foster an atmosphere of academic freedom by promoting the open and timely exchange of scholarly knowledge independent of personal interests. In keeping with this obligation, they are also required to avoid conflicts of interest.

In instances where potential or actual conflicts exist, faculty and staff are expected to consult with appropriate University officers and abide by this University policy. It is the responsibility of campus officials charged with implementing this policy to identify potential or actual conflicts of interest and take appropriate steps to manage, reduce, or eliminate them.

This policy represents a restatement of existing University policy and pertinent state and federal law and regulations.

1. University faculty and staff may not engage in other employment which interferes with the performance of their professional obligation.

2. University faculty and staff are expected to comply with the New York State Public Officers Law provisions on conflict of interest and ethical conduct.
3. University faculty and staff, to the extent required by law or regulation, shall disclose at minimum whether they (and their spouses and dependent children) have employment or financial interests or hold significant offices, in external organizations that may affect, or appear to affect, the discharge of professional obligations to the University.
4. University campuses shall ensure that all faculty and staff subject to pertinent laws and regulations disclose financial interests in accordance with procedures to be established by the Chancellor or designee. Campuses shall retain the reported information as required, identify actual or apparent conflicts of interest and seek resolution of such conflicts.
5. Each campus president shall submit to the chancellor's designee the name and title of the person or persons designated as financial disclosure designee(s) and shall further notify the chancellor's designee when a change in that assignment occurs. The chancellor's designee shall also be notified of any reports regarding conflict of interest that are forwarded to state or federal agencies.

---

### Definitions

**Conflict of interest** — any interest, financial or otherwise, direct or indirect; participation in any business, transaction or professional activity; or incurring of any obligation of any nature, which is or appears to be in substantial conflict with the proper discharge of an employee's duties in the 'public interest. A conflict of interest is also any financial interest that will, or may be reasonably expected to, bias the design, conduct or reporting of sponsored research.

---

### Other Related Information

[Outside Activities of University Policy Makers](#)

[Ethics in State Government - A Guide for New York State Employees](#)

[National Science Foundation, Grant Policy Manual](#)

---

### Procedures

There are no procedures relevant to this policy.

---

### Forms

There are no forms relevant to this policy.

---

### Authority

[42 CFR 50, Subpart F](#)

The following link to FindLaw's [New York State Laws](#) is provided for users' convenience; it is not the official site for the State of New York laws.

[NYS Public Officers Law, Section 73-a, and 73 and 74](#)

In case of questions, readers are advised to refer to the New York State Legislature site for the menu of [New York State Consolidated](#).

[Board of Trustees Policies - Appointment of Employees \(8 NYCRR Part 335\)](#)

State University of New York Board of Trustees Resolution adopted June 27, 1995

---

**History**

Memorandum to presidents from the office of the University provost, dated June 30, 1995 regarding revision to University conflict of interest policy to bring it in conformity with federal guidelines issued by the National Science Foundation and the Public Health Service.

---

**Appendices**

There are no appendices relevant to this policy.



# BINGHAMTON UNIVERSITY

START-UP NY: VESTAL CAMPUS MAP

- A) SU-107-1-B-0136-000-A (BIOTECHNOLOGY BUILDING) (65 Murray Hill Road, Vestal, NY 13850)
- B) SU-107-1-B-0148-000-A (ENGINEERING & SCIENCES BUILDING) (85 Murray Hill Road, Vestal, NY 13850)
- C) SU-107-1-B-0156-000-A (CENTER OF EXCELLENCE BUILDING) (45 Murray Hill Road, Vestal, NY 13850)
- I) SU-107-2-B-1001-000-A (4104 Vestal Road, Vestal, NY-13850)
- O) SU-107-2-B-1006-000-A (300 Plaza Drive, Vestal, NY-13850)





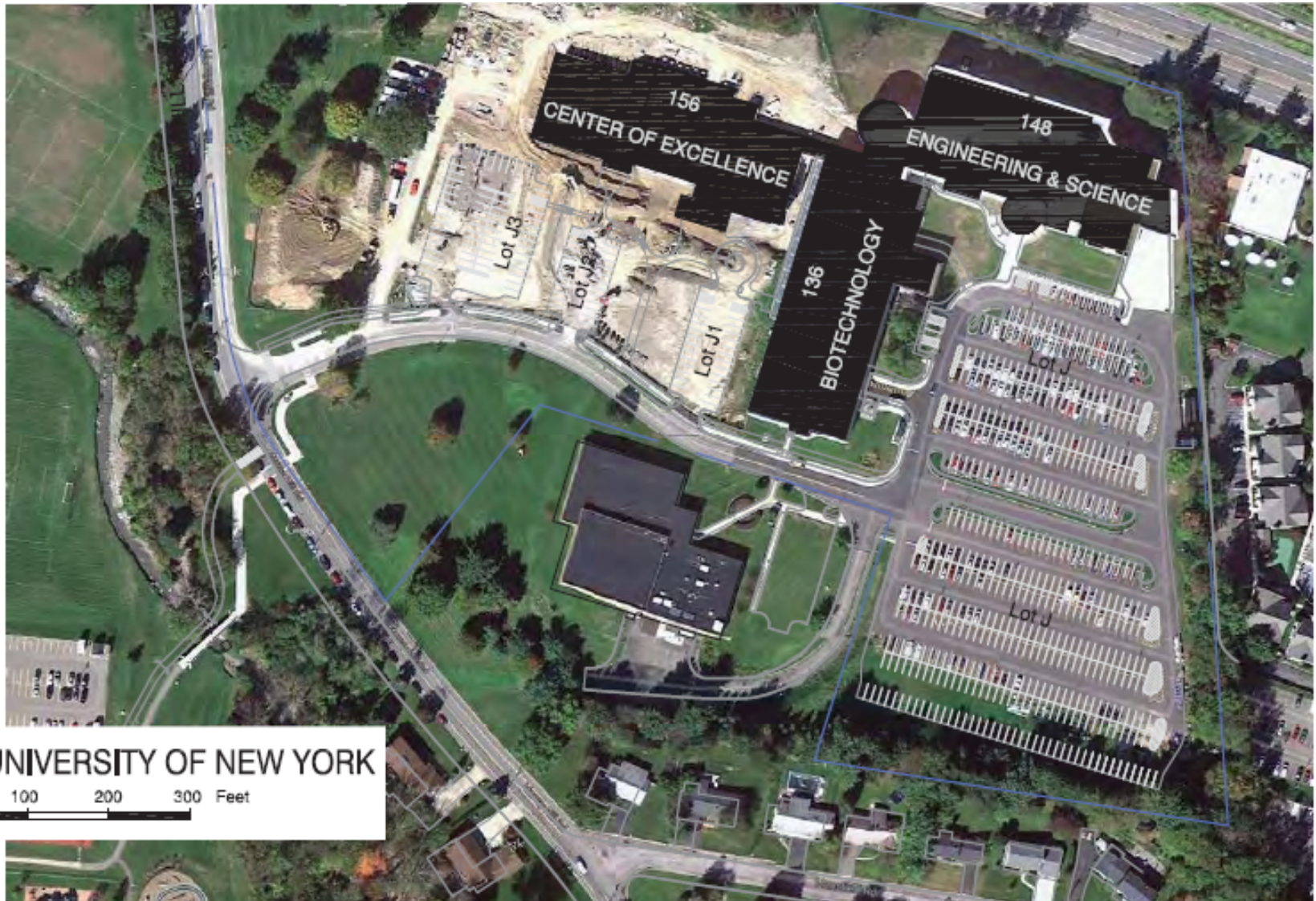
## BINGHAMTON UNIVERSITY

START-UP SUITE - 85 MURRAY HILL RD, VESTAL, NY 13850

SU-107-1-B-0136-000-A (BIOTECHNOLOGY BUILDING)

SU-107-1-B-0148-000-A (ENGINEERING & SCIENCES BUILDING)

SU-107-1-B-0156-000-A (CENTER OF EXCELLENCE BUILDING)



# BINGHAMTON UNIVERSITY

START-UP NY: VESTAL CAMPUS MAP

A) SU-107-1-B-0136-000-A (BIOTECHNOLOGY  
BUILDING) (65 Murray Hill Road, Vestal, NY 13850)



Gross Area: 43,271 st

BIOTECHNOLOGY BLDG BLDG. NO. 135

SECOND FLOOR PLAN

3,151 Start-Up New York

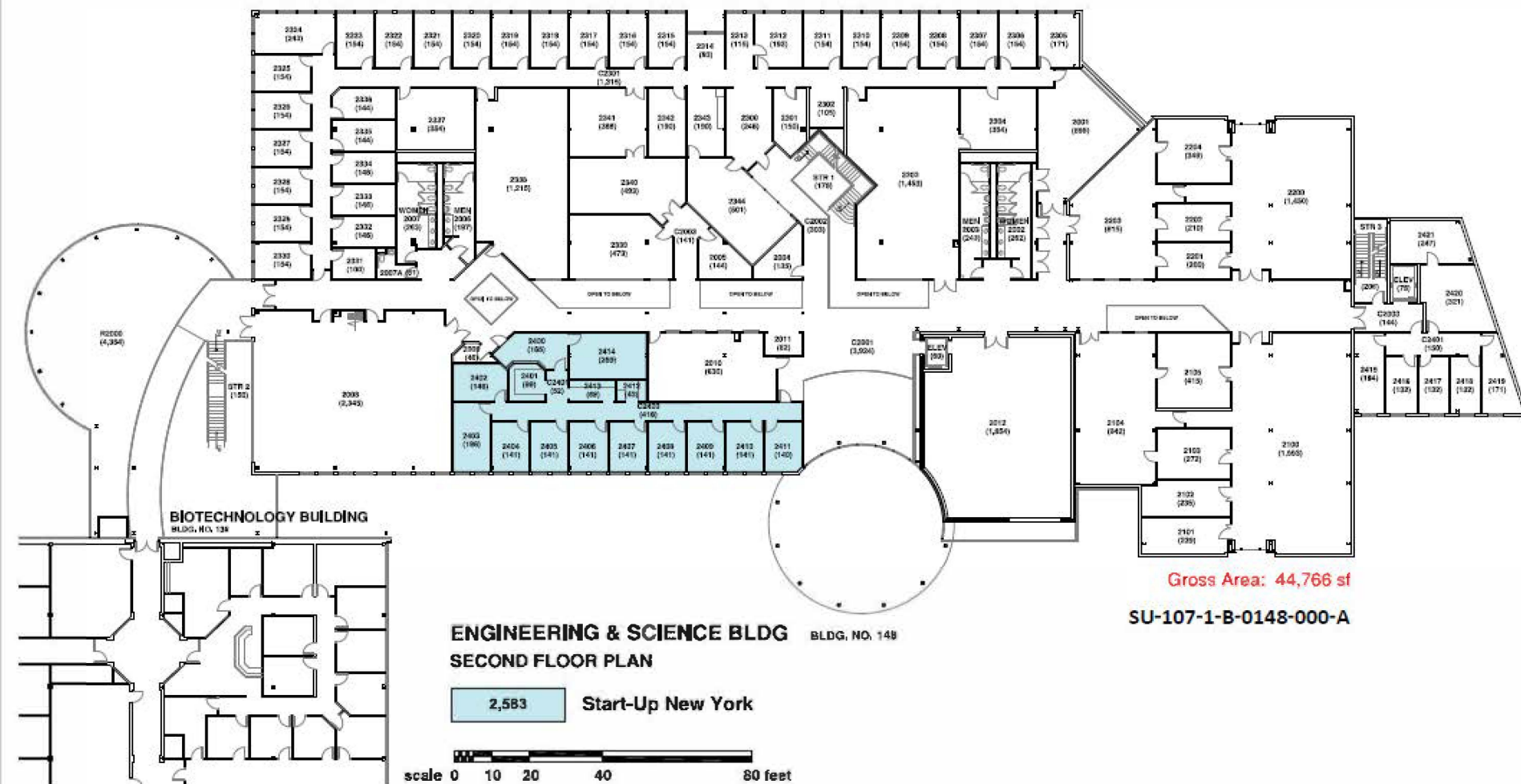
scale 0 10 20 40 80 feet

SU-107-1-B-0136-000-A



## START-UP NY: VESTAL CAMPUS MAP

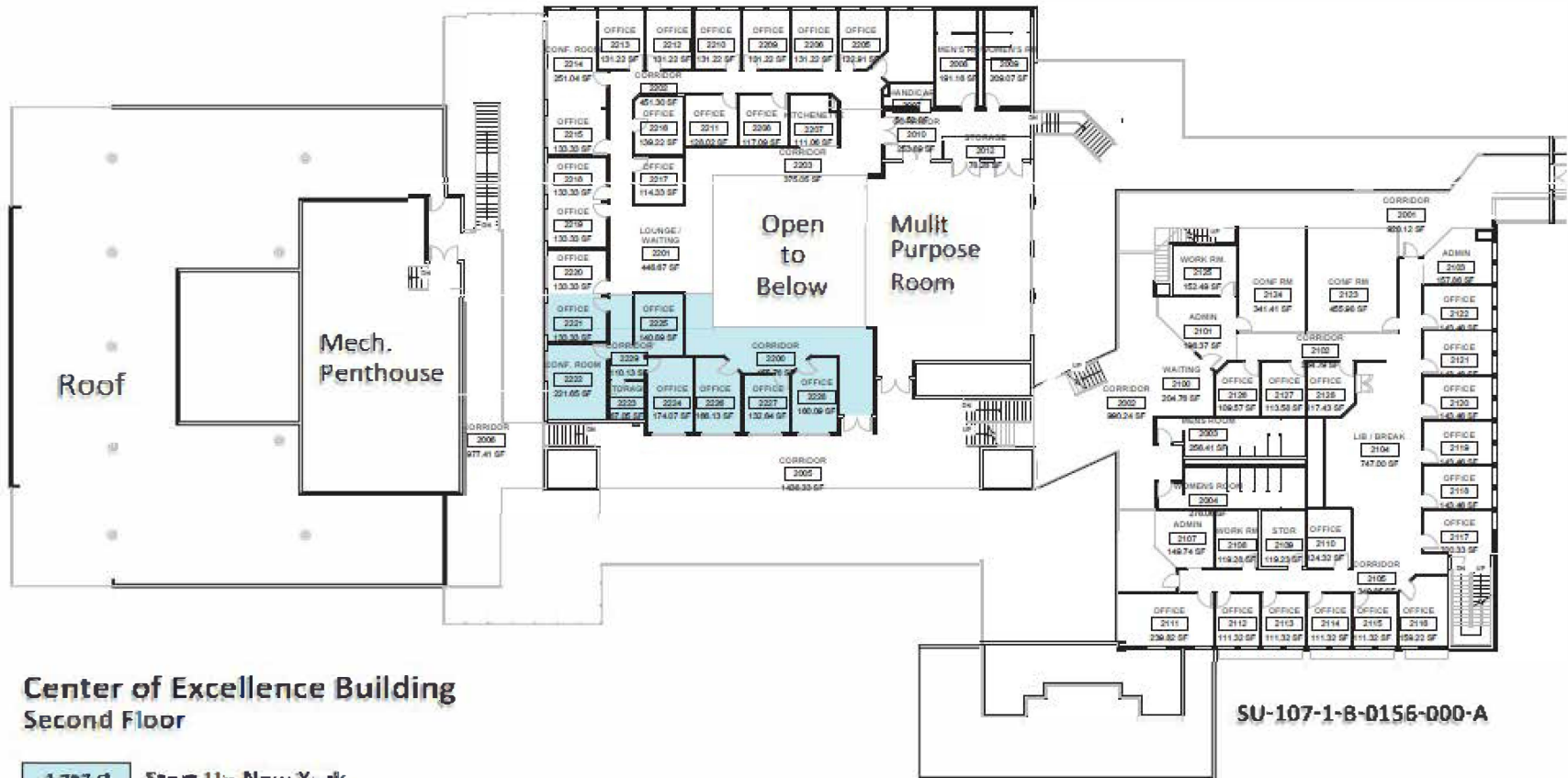
**B) SU-107-1-B-0148-000-A (ENGINEERING & SCIENCES BUILDING) (85 Murray Hill Road, Vestal, NY 13850)**



# BINGHAMTON UNIVERSITY

START-UP NY: VESTAL CAMPUS MAP

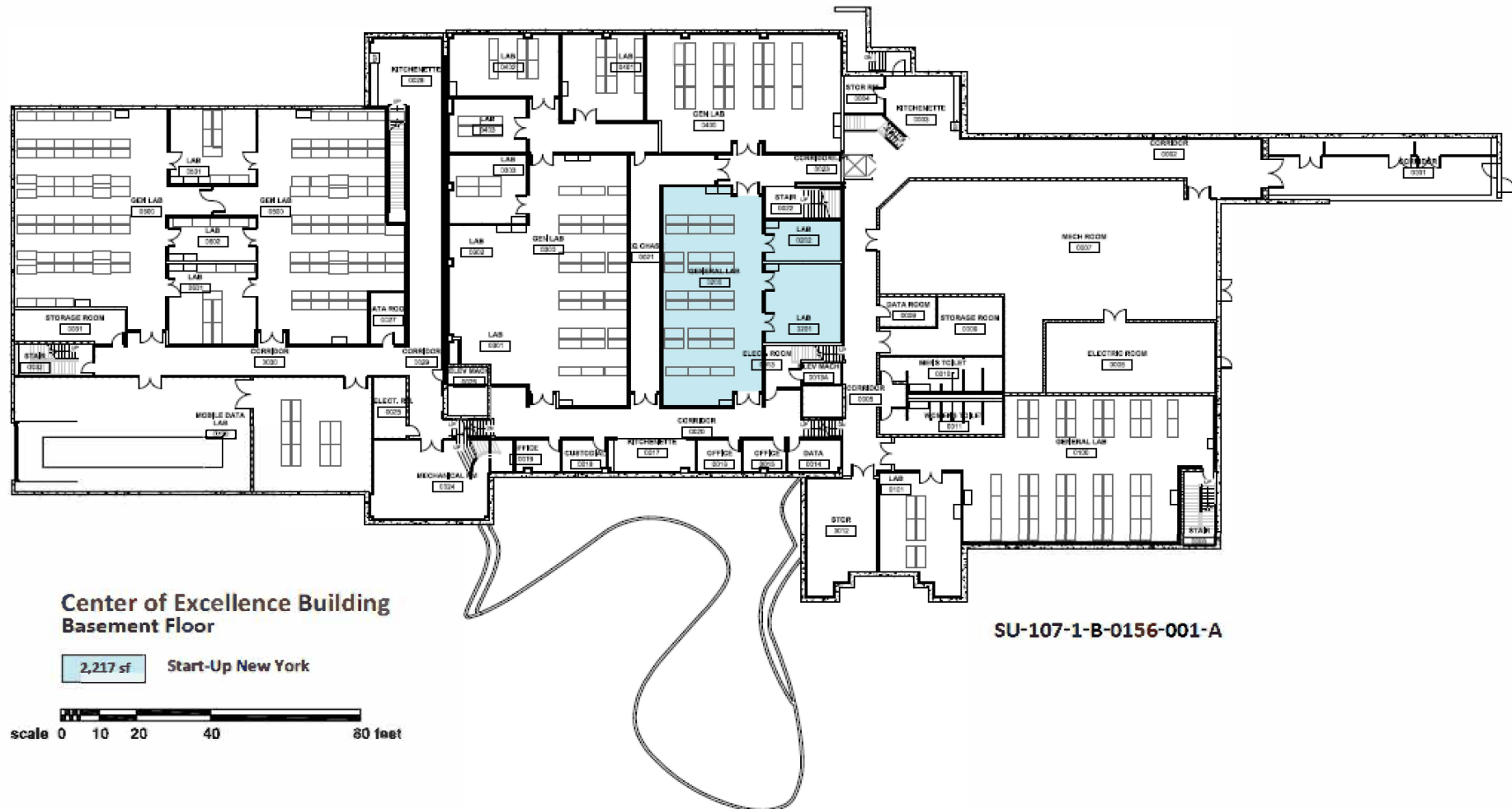
C) SU-107-1-B-0156-000-A (ENGINEERING & SCIENCES BUILDING) (85 Murray Hill Road, Vestal, NY 13850)



SU-107-1-B-0156-000-A

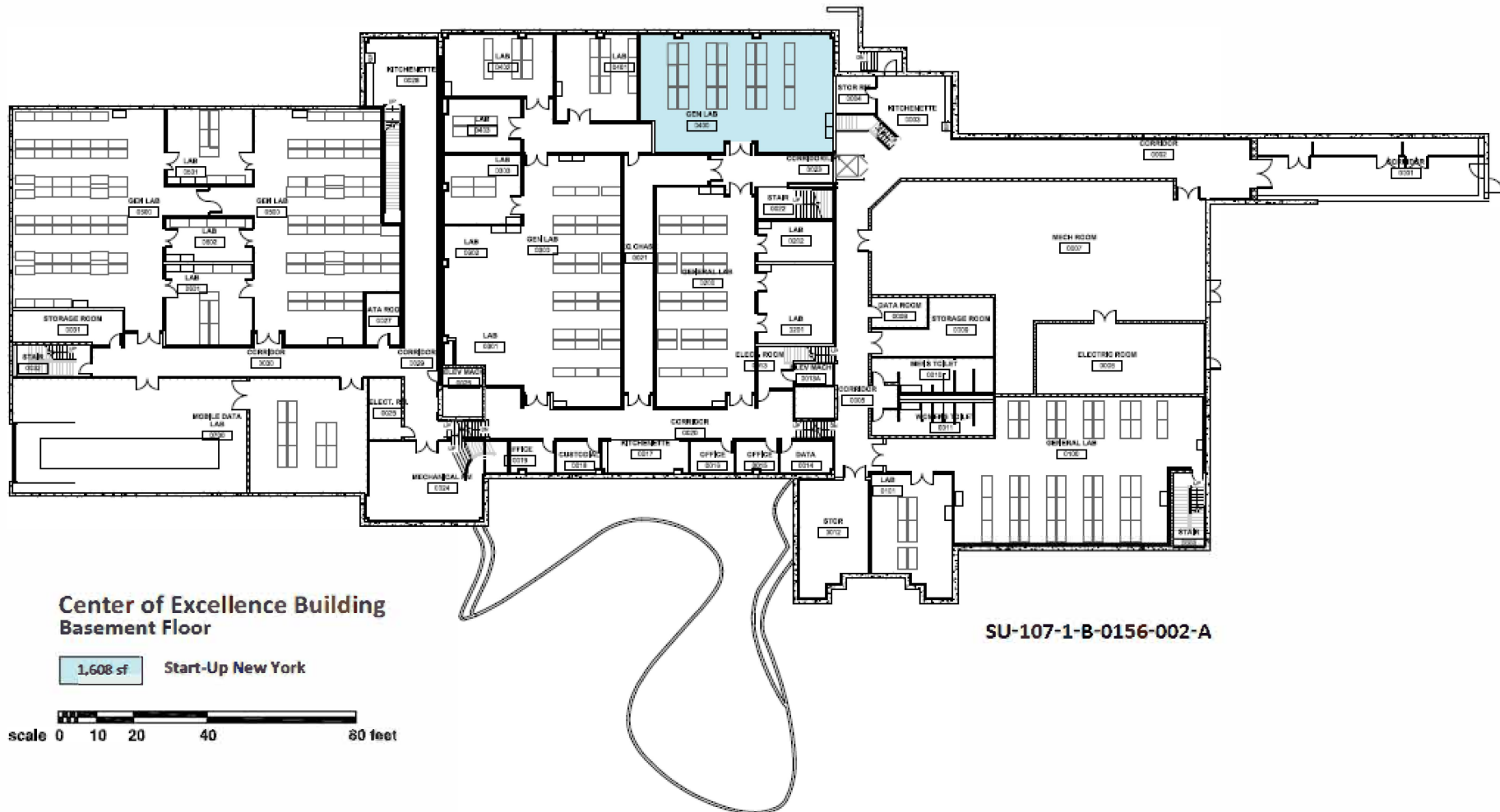
## START-UP NY: VESTAL CAMPUS MAP

**C) SU-107-1-B-0156-000-A (ENGINEERING & SCIENCES BUILDING) (85 Murray Hill Road, Vestal, NY 13850)**



## START-UP NY: VESTAL CAMPUS MAP

C)SU-107-1-B-0156-000-A(ENGINEERING & SCIENCES BUILDING) (85 Murray Hill Road, Vestal. NY 13850)





# BINGHAMTON UNIVERSITY

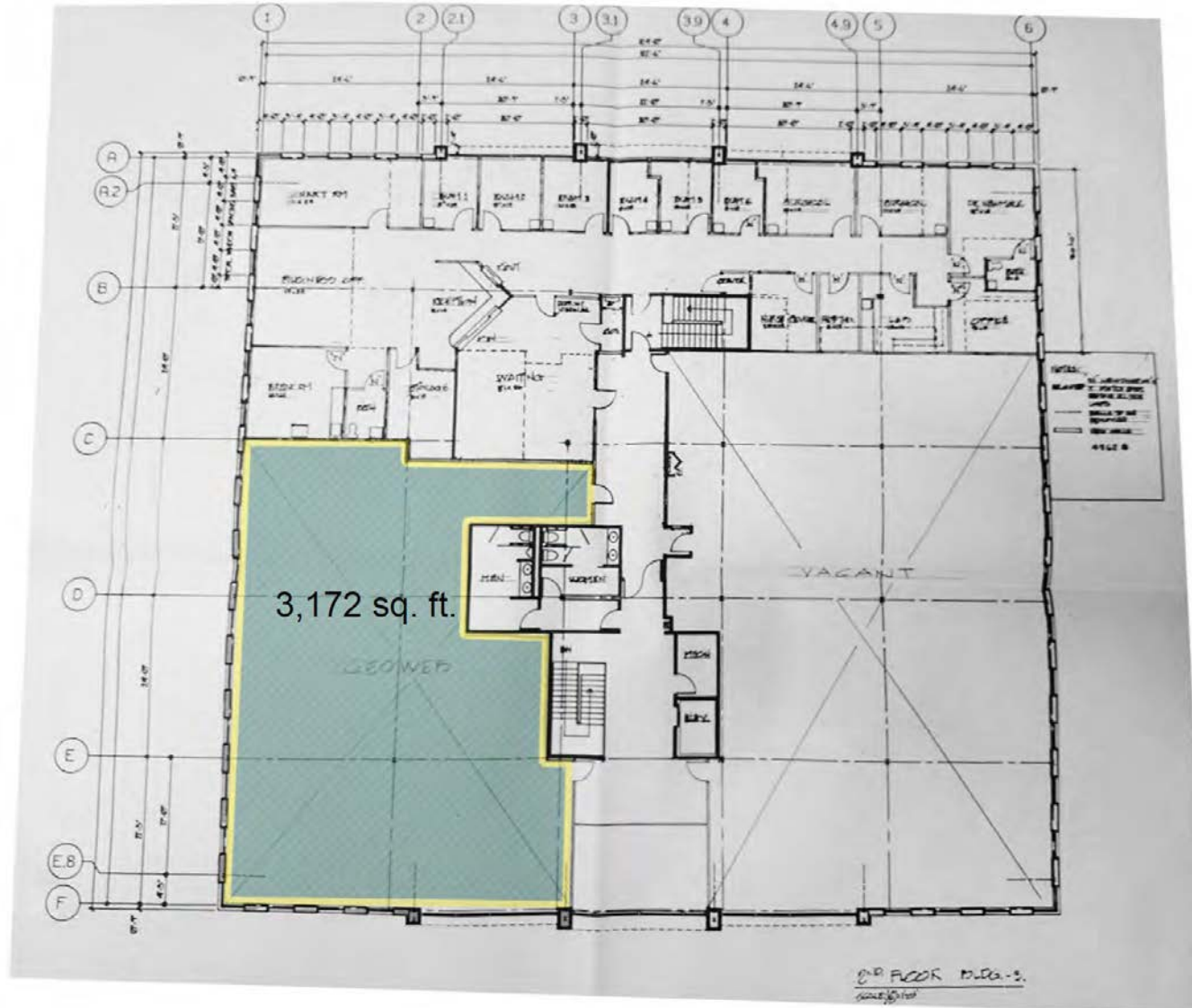
START-UP NY: VESTAL CAMPUS MAP

I) SU-107-2-B-1001-000-A Office Suite 3,172 sq. ft. on second floor (4104 Vestal Road, Vestal, NY 13850)



## START-UP NY: VESTAL CAMPUS MAP

I) SU-107-2-B-1001-000-A Office Suite 3,172 sq. ft. on second floor (4104 Vestal Road, Vestal, NY 13850)

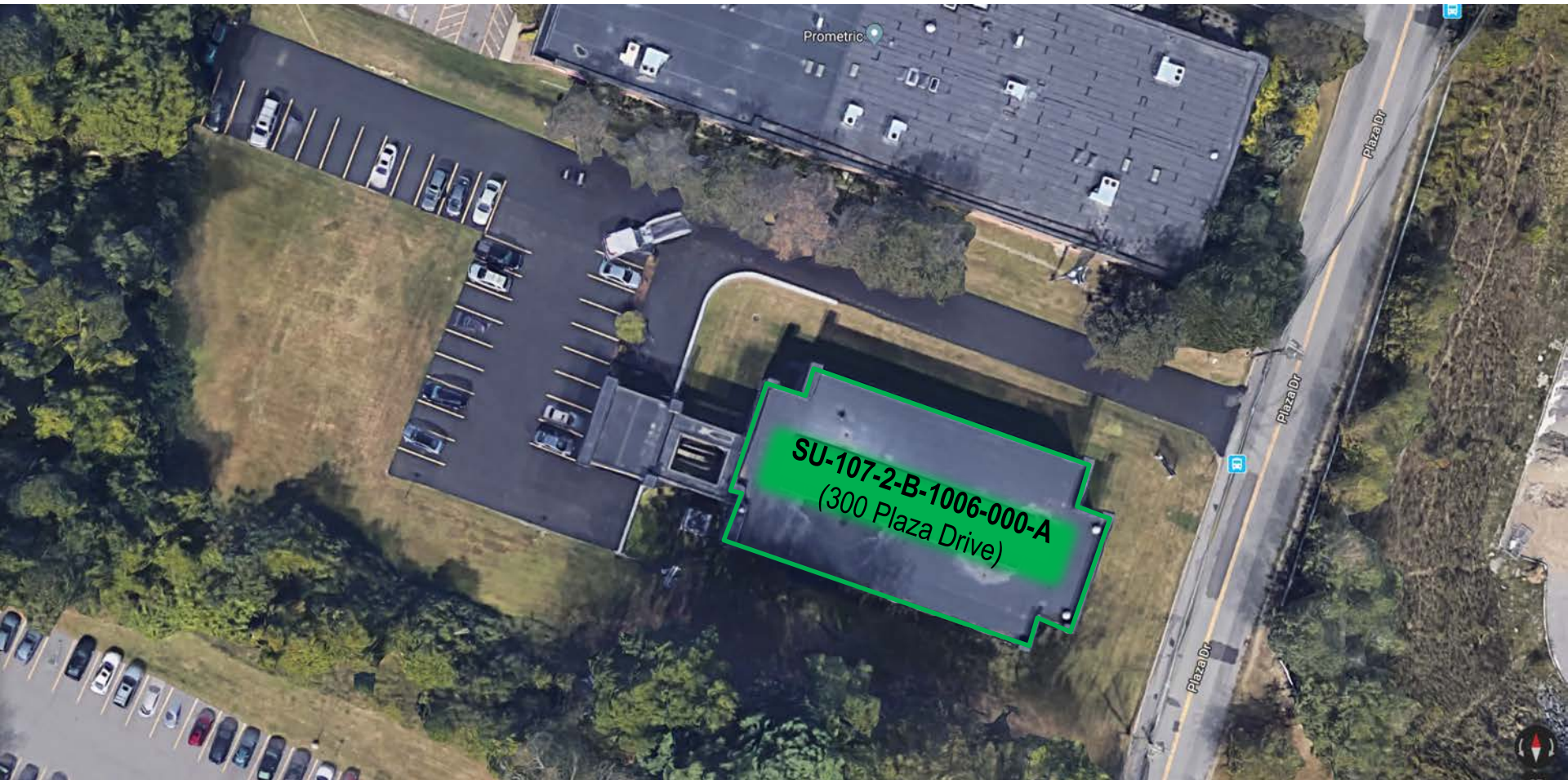




# BINGHAMTON UNIVERSITY

START-UP NY: VESTAL CAMPUS MAP

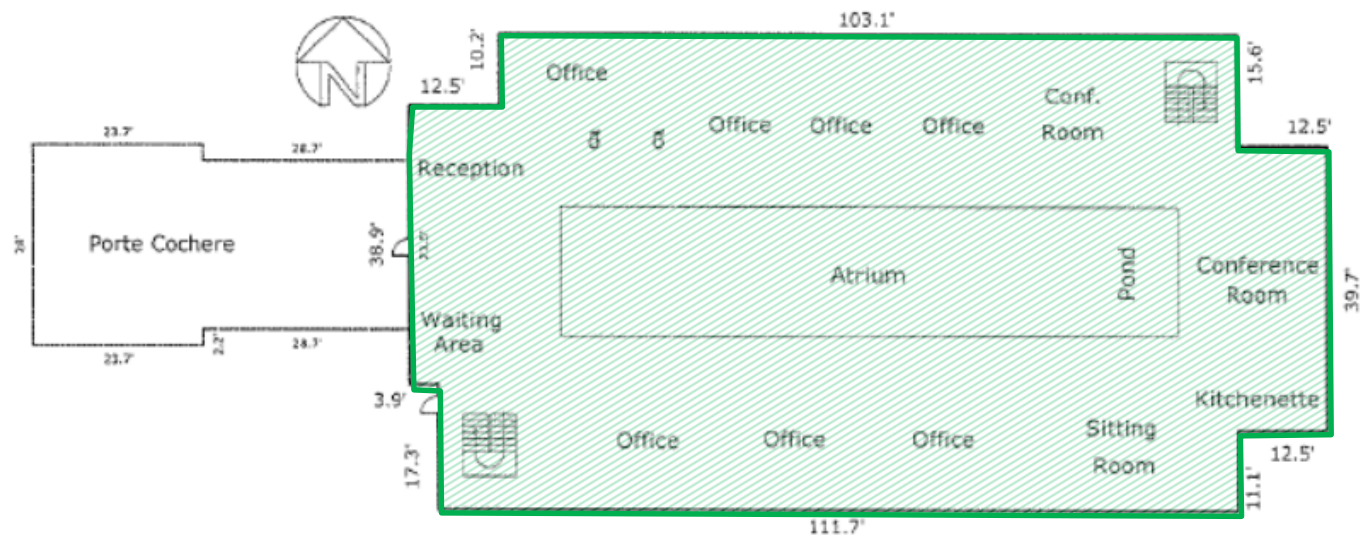
O) SU-107-2-B-1006-000-A (300 Plaza Drive, Vestal, NY 13850)



# BINGHAMTON UNIVERSITY

START-UP NY: VESTAL CAMPUS MAP

O) SU-107-2-B-1006-000-A upper level 5,911 sq. ft. (300 Plaza Drive, Vestal, NY 13850)



Upper Level



# BINGHAMTON UNIVERSITY

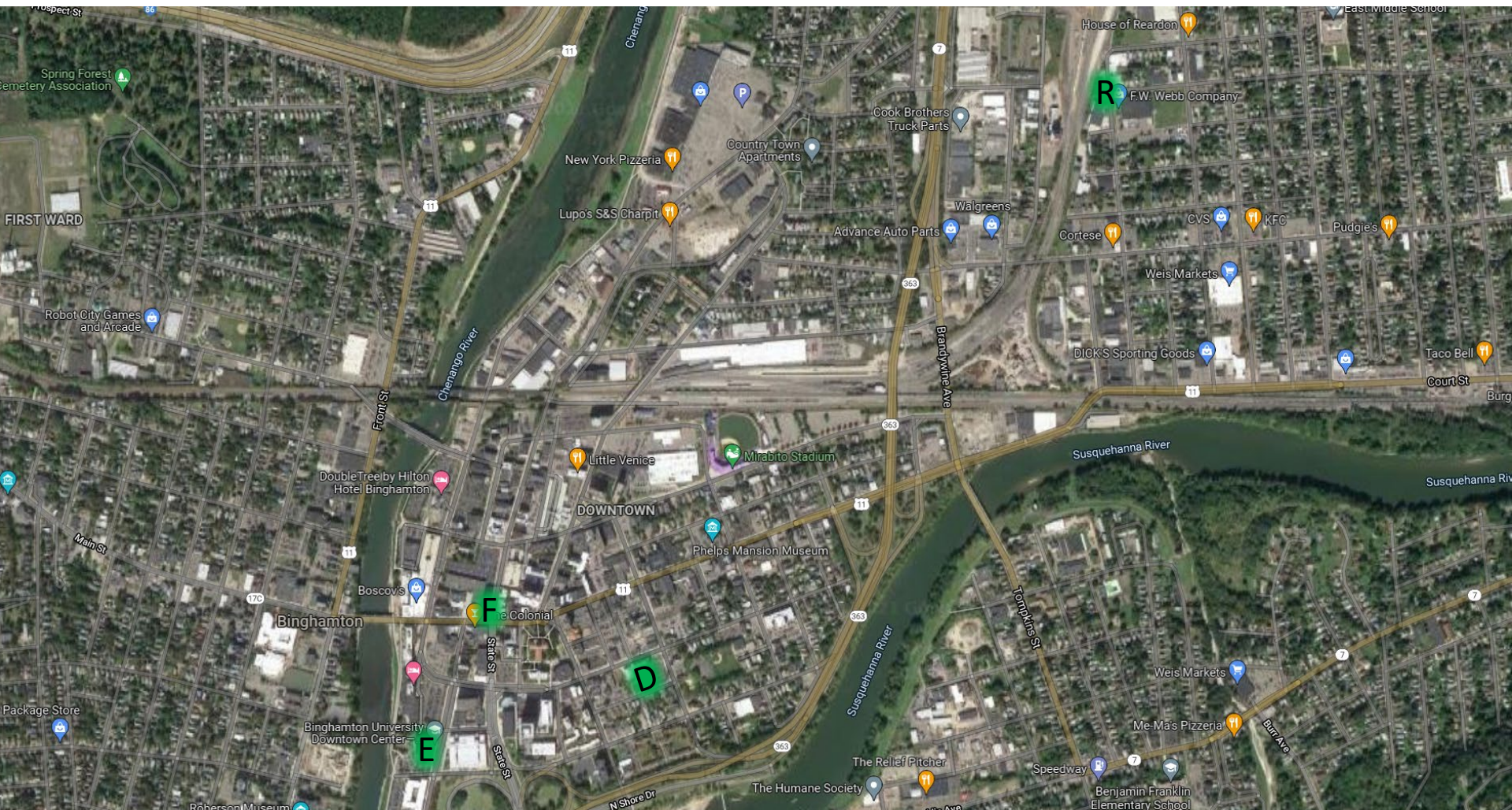
## START-UP NY: BINGHAMTON CAMPUS MAP

D) SU-107-1-L-0176-000-A (STHTI SITE) and SU-107-1-B-0175-000-A (STHTI) (120 Hawley St, Binghamton, NY-13901)

E) UNIVERSITY DOWNTOWN CENTER (67 Washington St. Binghamton, NY-13902)

F) SU-107-1-B-1002-000-A (BC IDA INCUBATOR: "THE CENTER") (59-61 Court St, Binghamton, NY-13901)

R) SU-107-2-B-1008-000-A (KLaw Manufacturing Center) (75 Griswold St, Binghamton, NY-13904)





## BINGHAMTON UNIVERSITY

120-HAWLEY STREET, BINGHAMTON, NY 13902

SU-107-1-L-0176-000-A (STHTI SITE)

SU-107-1-B-0175-000-A (STHTI INCUBATOR)



# FLOOR PLAN

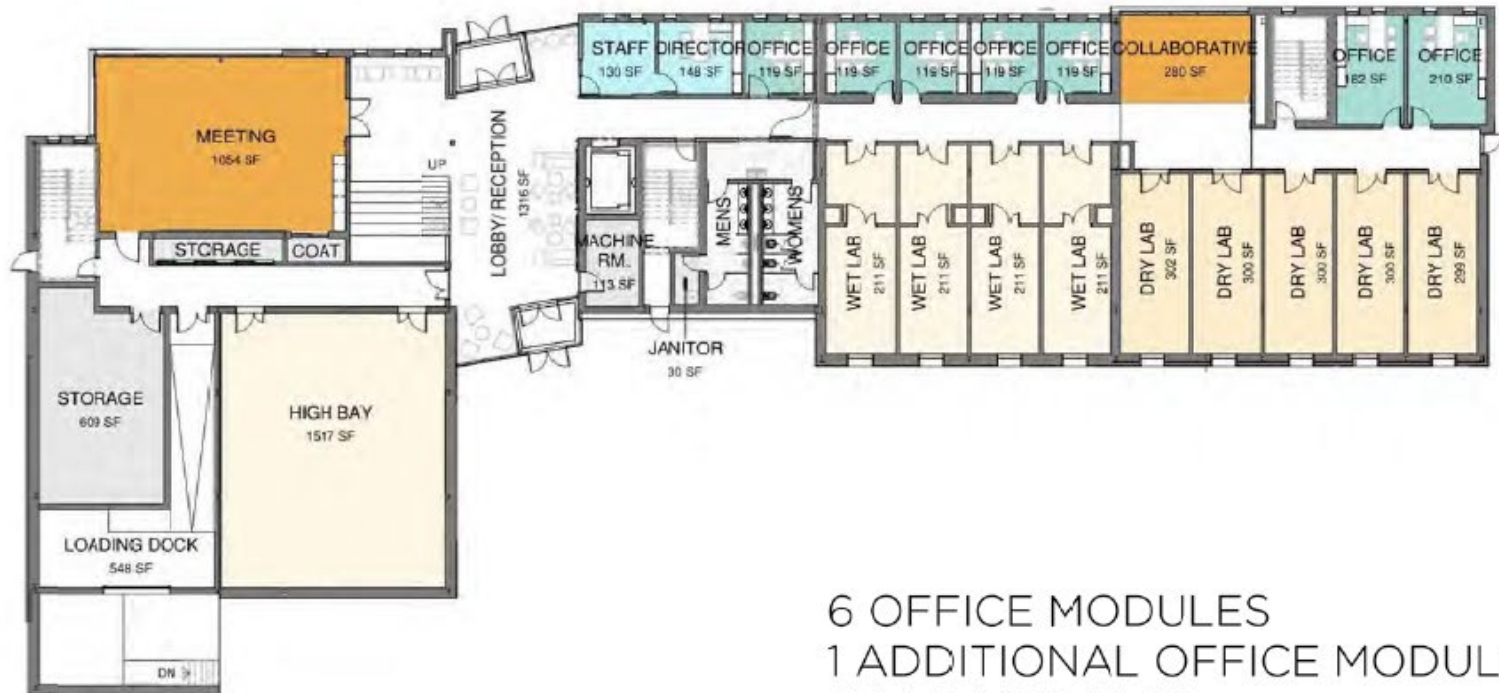
## FIRST FLOOR

BINGHAMTON UNIVERSITY

120 HAWLEY STREET, BINGHAMTON, NY 13901

SU-107-1-B-0175-000-A (STHTI INCUBATOR)

34,064 sq. ft.



6 OFFICE MODULES  
1 ADDITIONAL OFFICE MODULE  
9 LAB MODULES  
HIGH BAY SPACE



ASHLEY MCGRAW

SOUTHERN TIER HIGH TECH INCUBATOR



# FLOOR PLAN

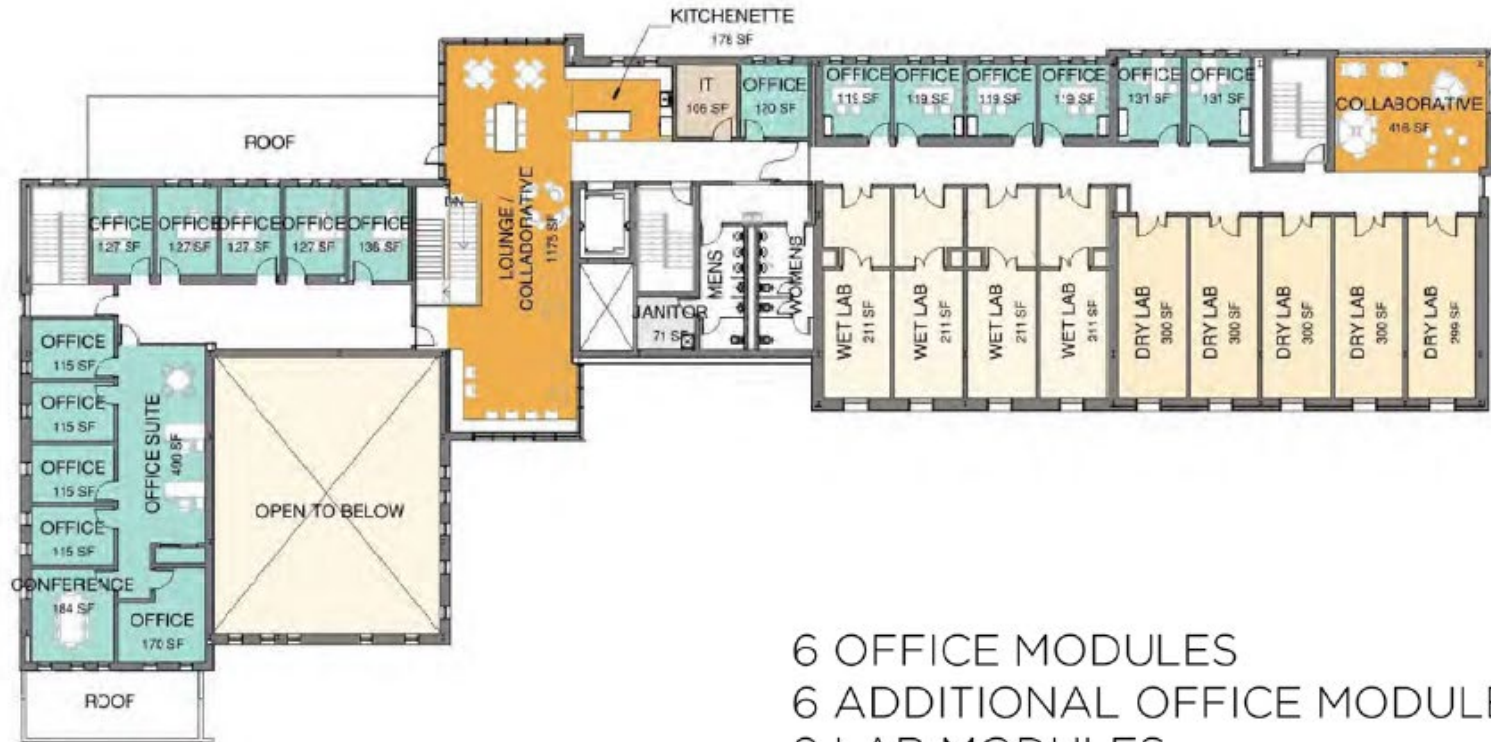
## SECOND FLOOR

BINGHAMTON UNIVERSITY

120 HAWLEY STREET, BINGHAMTON, NY 13901

SU-107-1-B-0175-000-A (STHTI INCUBATOR)

34,064 sq. ft.



6 OFFICE MODULES  
6 ADDITIONAL OFFICE MODULES  
9 LAB MODULES  
OFFICE SUITE

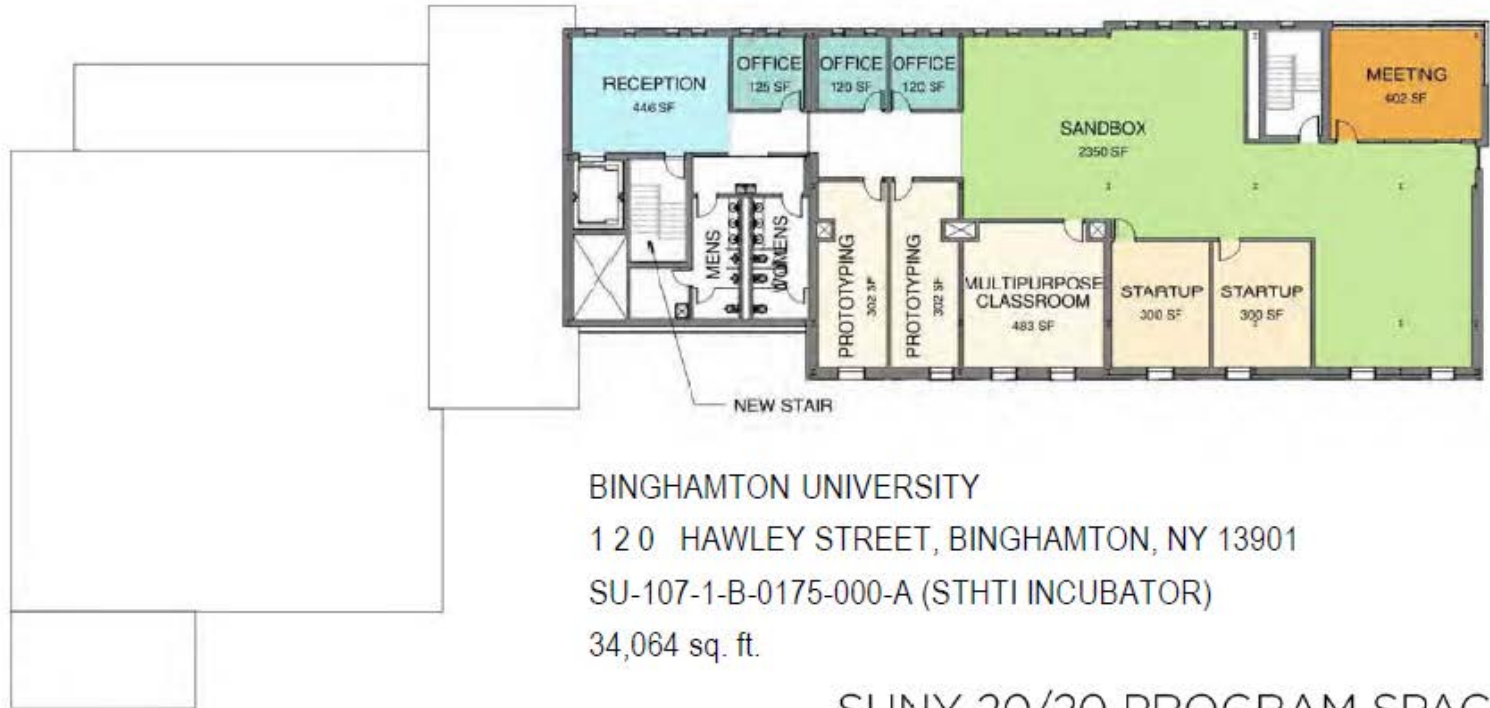


ASHLEY MCGRAW

SOUTHERN TIER HIGH TECH INCUBATOR

# SCHEMATIC FLOOR PLAN

## THIRD FLOOR | SUNY 20/20



BINGHAMTON UNIVERSITY

120 HAWLEY STREET, BINGHAMTON, NY 13901

SU-107-1-B-0175-000-A (SHTI INCUBATOR)

34,064 sq. ft.

SUNY 20/20 PROGRAM SPACE  
1 ADDITIONAL OFFICE MODULE



ASHLEY MCGRAW

SOUTHERN TIER HIGH TECH INCUBATOR

# BINGHAMTON UNIVERSITY

START-UP NY: BINGHAMTON CAMPUS MAP

F) SU-107-1-B-1002-000-A (BC IDA INCUBATOR: "THE CENTER") (59-61 Court St, Binghamton, NY-13901)

## **BCIDA Incubator**

59-61 Court Street, Binghamton, NY 13901





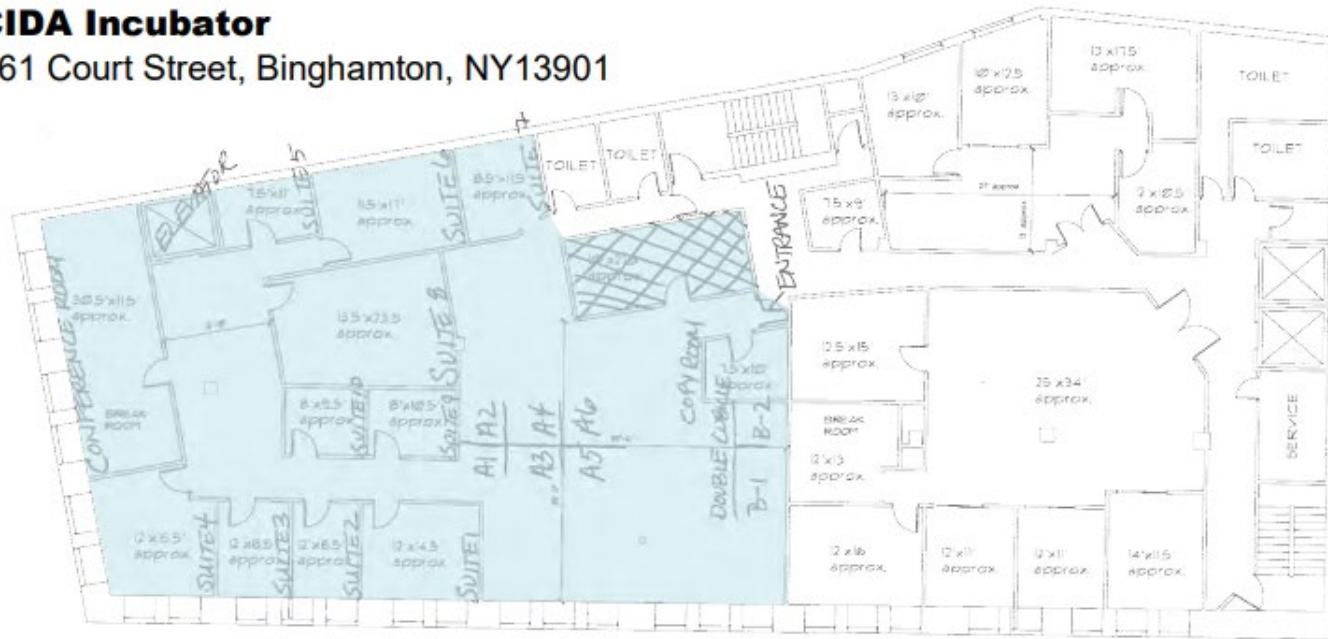
# BINGHAMTON UNIVERSITY

START-UP NY: BINGHAMTON CAMPUS MAP

F) SU-107-1-B-1002-000-A (4,300 sq. ft.) (59-61 Court St, Binghamton, NY-13901)

## BCIDA Incubator

59-61 Court Street, Binghamton, NY13901



THE CENTER  
(BCIDA)  
59-61 COURT ST.

4,300 sf

Start-Up New York

SU-107-2-B-1002-000-A second floor

59-SIXTYONE LLC 59 COURT STREET RENOVATION EXISTING CONDITION LAYOUT PROJECT	
DATE: 10/10/2018	BY: [Signature]
SCALE: 1/8" = 1'-0"	PROJECT: 59 COURT STREET RENOVATION
2ND FLOOR PLAN	
CT A202	

# BINGHAMTON UNIVERSITY

START-UP NY: BINGHAMTON CAMPUS MAP

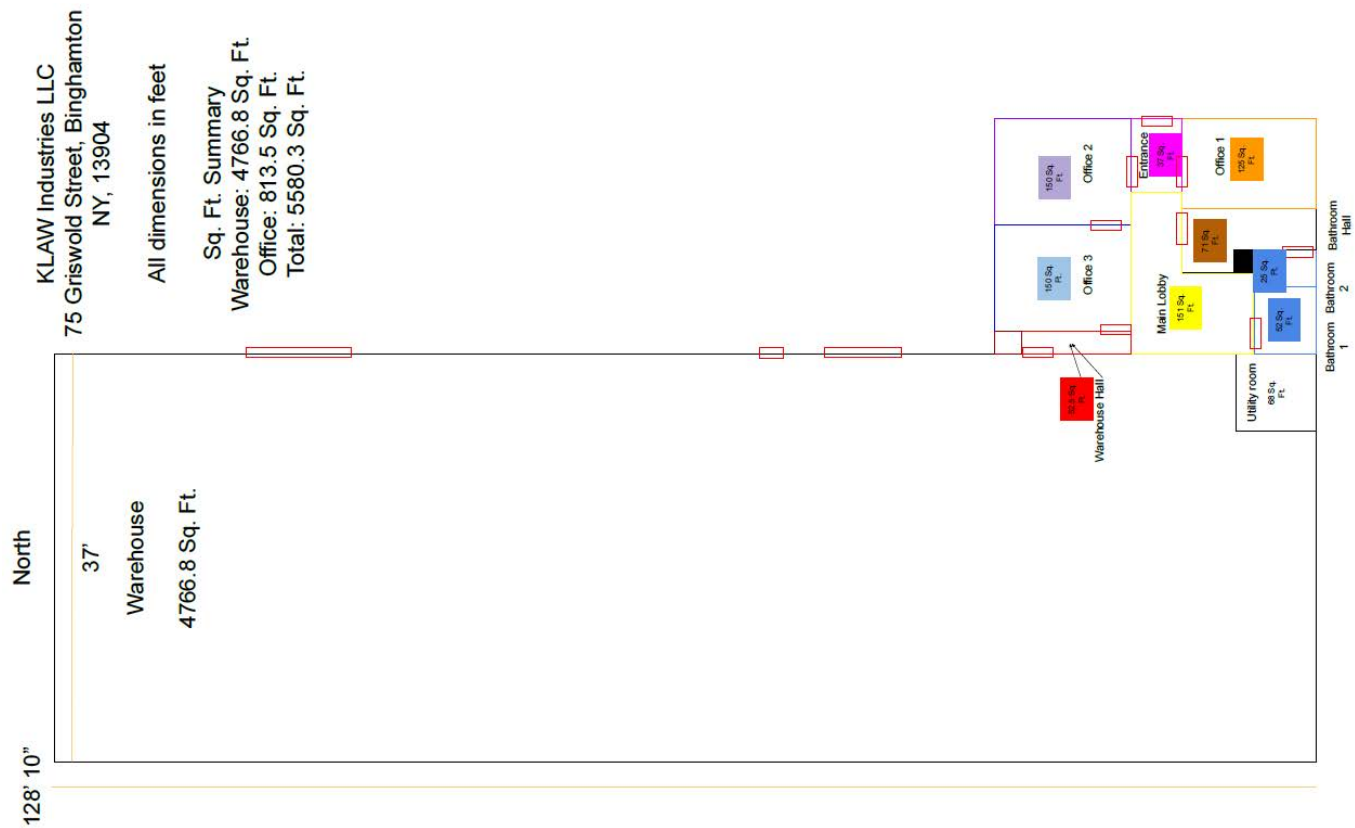
R) SU-107-2-B-1008-000-A (KLAW Manufacturing Center) (75 Griswold St, Binghamton, NY-13904)





BINGHAMTON UNIVERSITY  
START-UP NY: BINGHAMTON CAMPUS MAP

R) SU-107-2-B-1008-000-A (5,580 sq. ft.) (75 Griswold St, Binghamton, NY-13904)



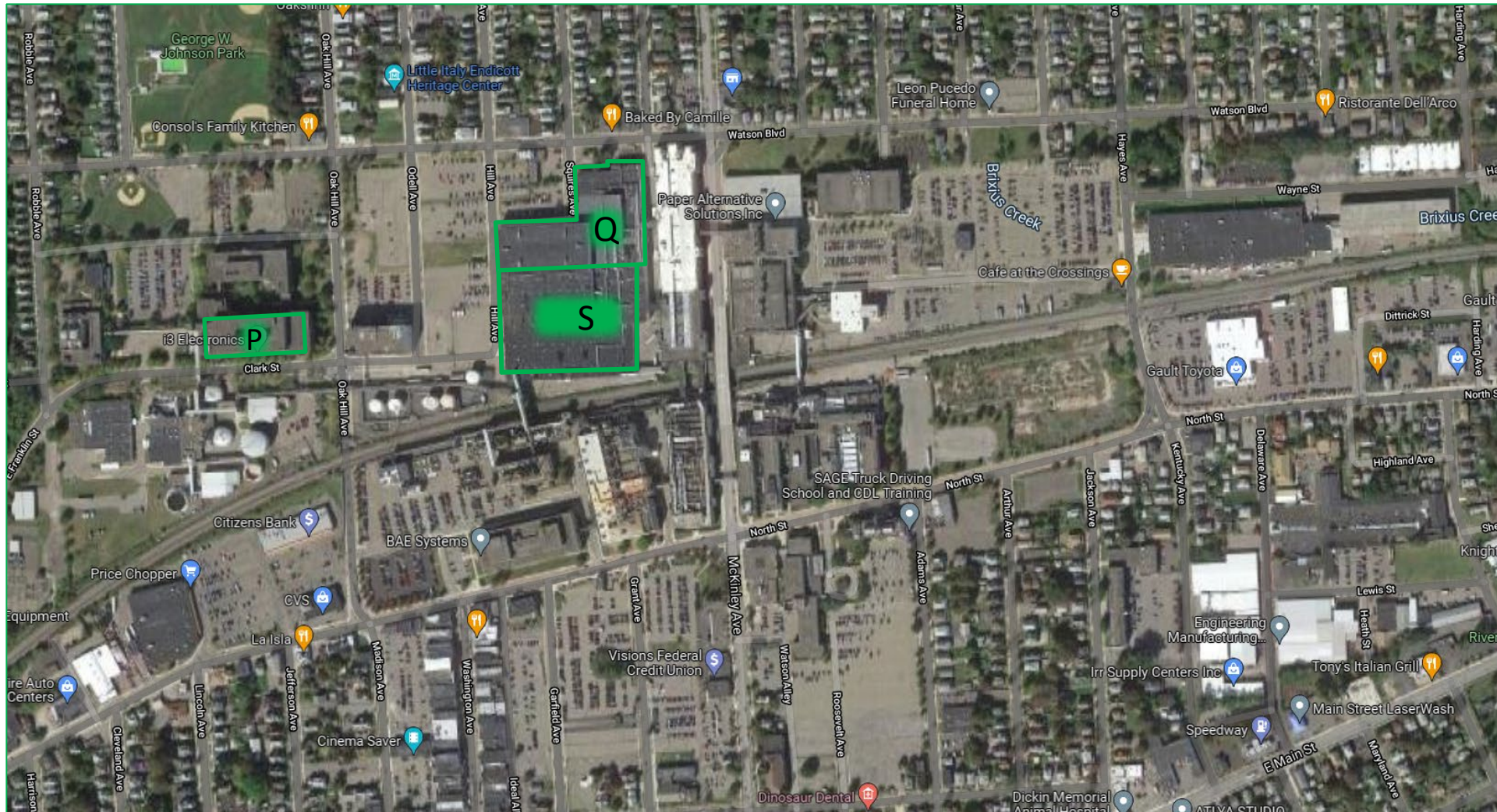
# BINGHAMTON UNIVERSITY

START-UP NY: ENDICOTT CAMPUS MAP

P) BINGHAMTON UNIVERSITY CENTER FOR ADVANCED MICROELECTRONICS MANUFACTURING (CAMM)

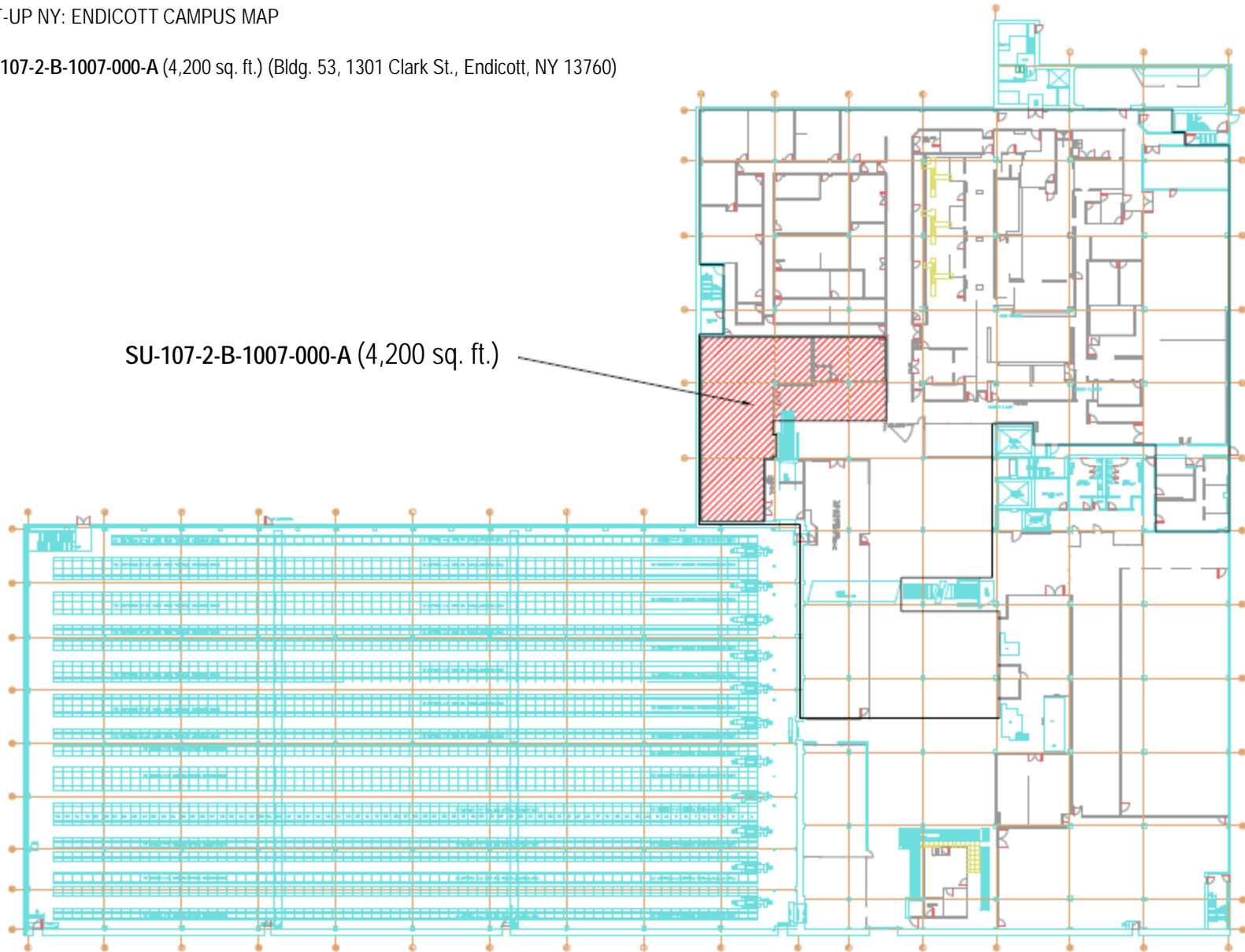
Q) SU-107-2-B-1007-000-A (Bldg. 53, 1301 Clark St., Endicott, NY 13760)

S) SU-107-2-B-1009-000-A & SU-107-2-B-1010-000-A (Bldg. 48, 1301 Clark St., Endicott, NY 13760)



**BINGHAMTON UNIVERSITY**  
START-UP NY: ENDICOTT CAMPUS MAP

Q) SU-107-2-B-1007-000-A (4,200 sq. ft.) (Bldg. 53, 1301 Clark St., Endicott, NY 13760)

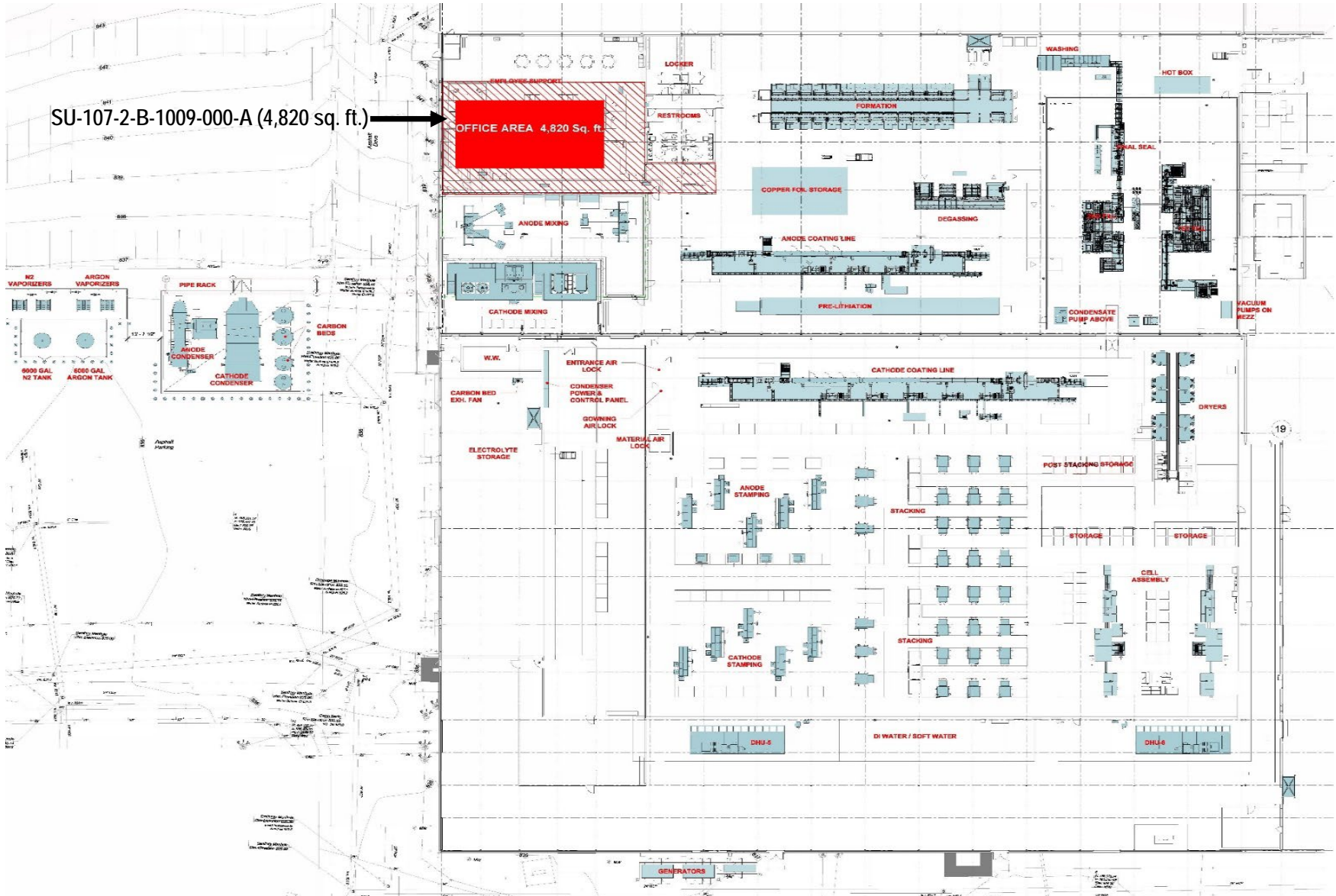




# BINGHAMTON UNIVERSITY

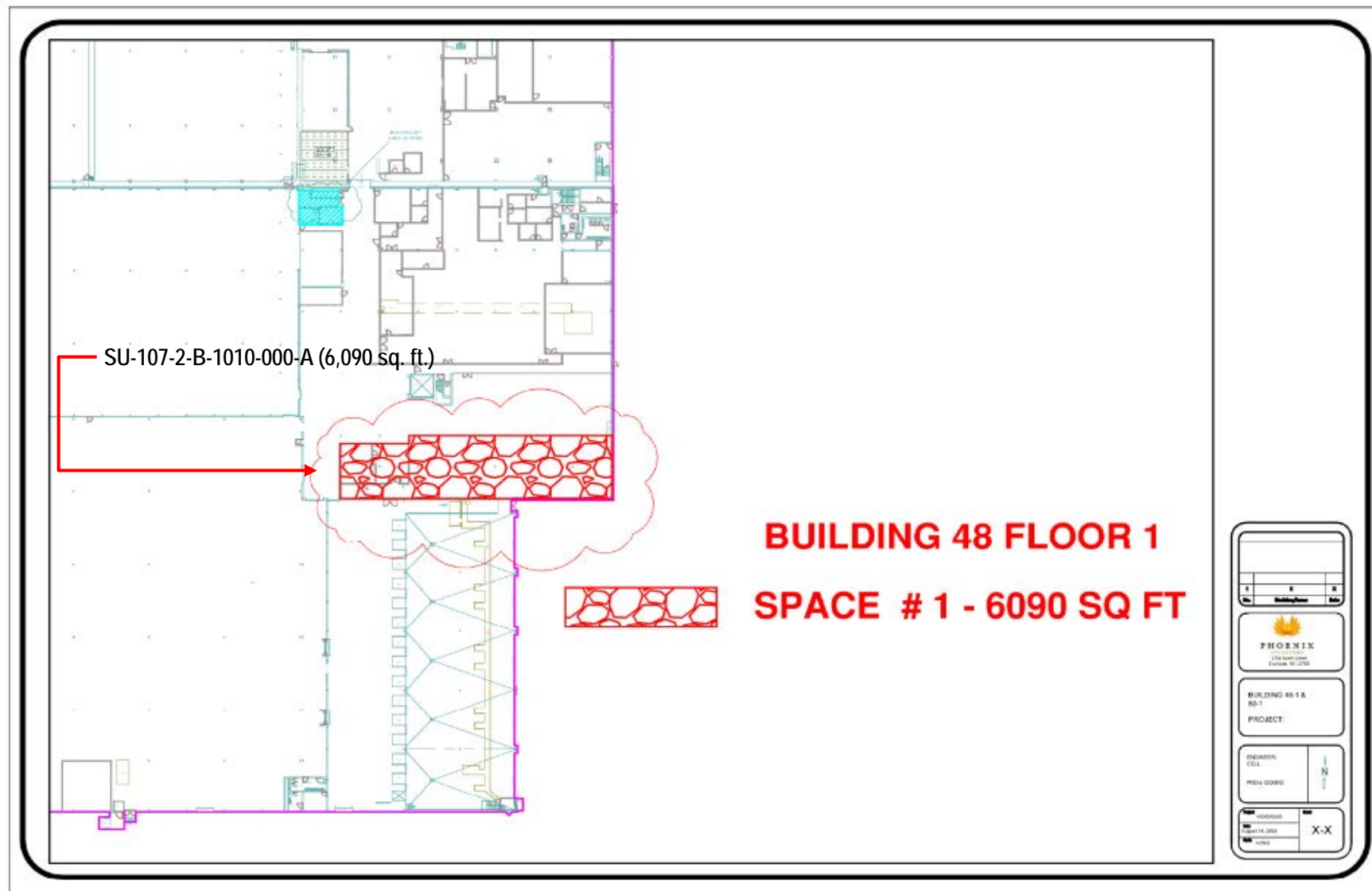
START-UP NY: ENDICOTT CAMPUS MAP

S) SU-107-2-B-1009-000-A (4,820 sq. ft.) (Bldg. 48, 1301 Clark Street Endicott, NY 13760)



## START-UP NY: ENDICOTT CAMPUS MAP

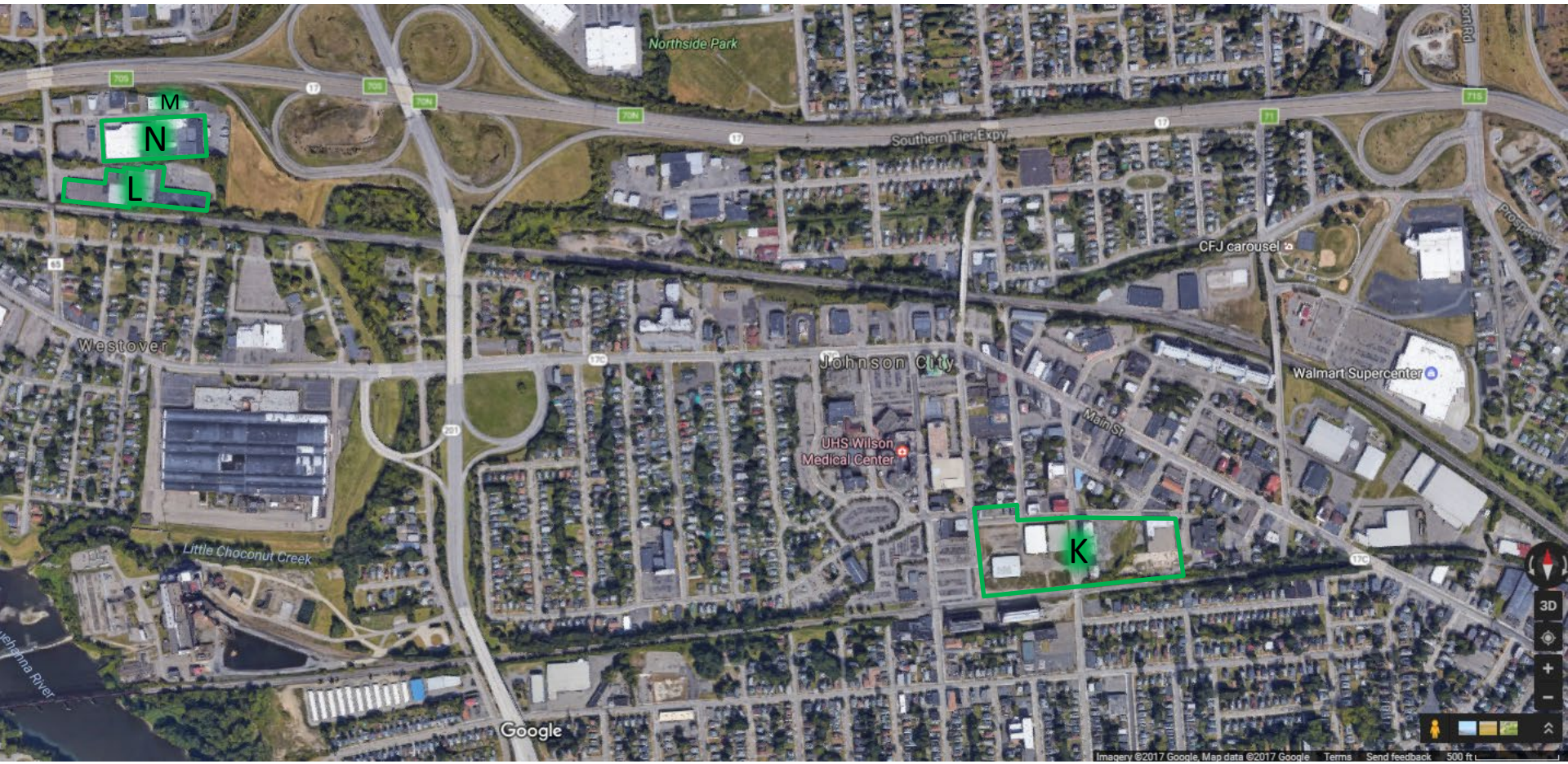
**S) SU-107-2-B-1010-000-A** (6,090 sq. ft.) (Bldg. 48, 1301 Clark Street Endicott, NY 13760)





**BINGHAMTON UNIVERSITY**  
START-UP NY: JOHNSON CITY CAMPUS MAP

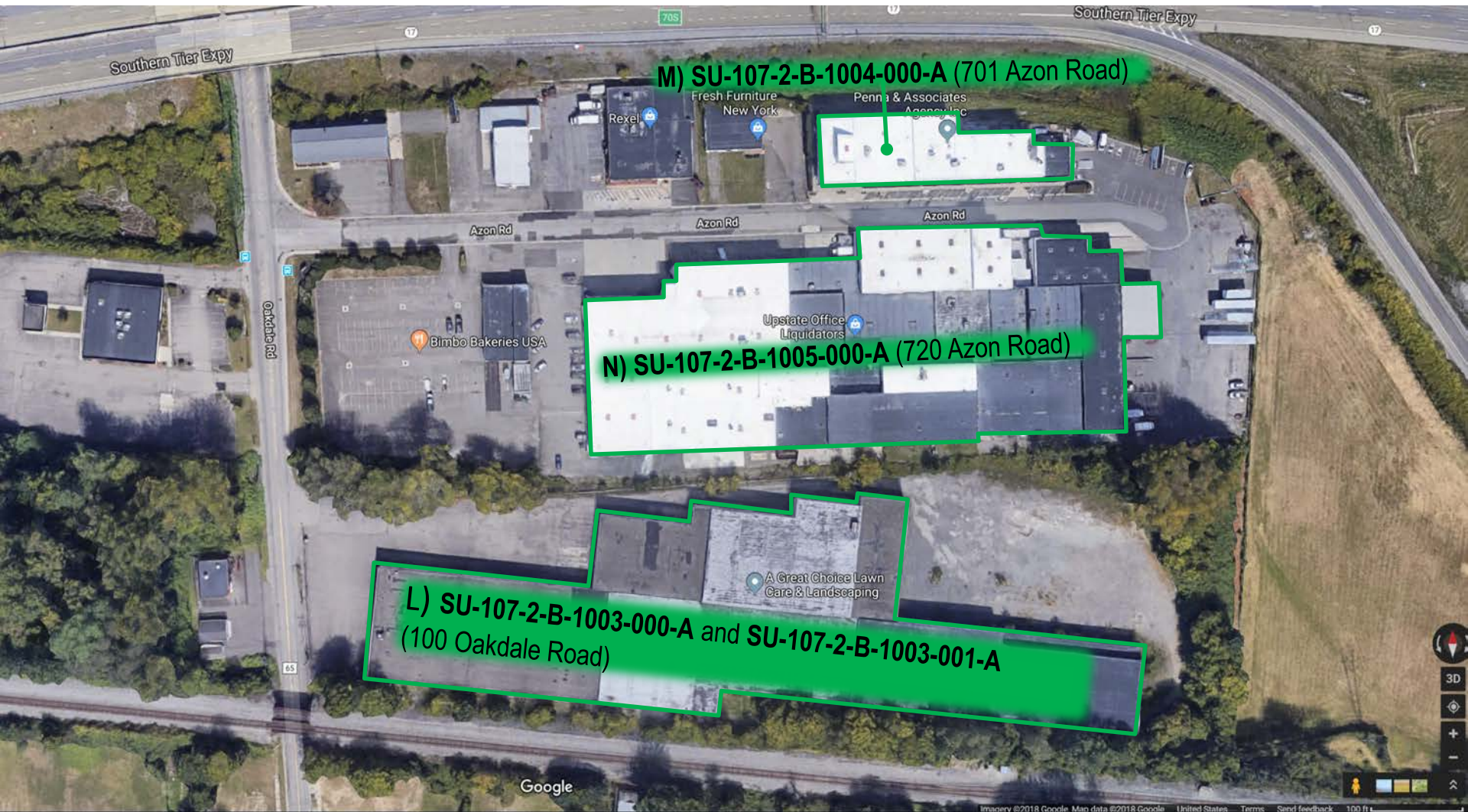
- K) BINGHAMTON UNIVERSITY HEALTH SCIENCES CAMPUS
- L) SU-107-2-B-1003-000-A and SU-107-2-B-1003-001-A (100 Oakdale Road, Johnson City, NY 13790)
- M) SU-107-2-B-1004-000-A First Floor (701 Innovation Way (formerly Azon Road), Johnson City, NY 13790)
- N) SU-107-2-B-1005-000-A (720 Innovation Way (formerly Azon Road), Johnson City, NY 13790)





**BINGHAMTON UNIVERSITY**  
START-UP NY: JOHNSON CITY CAMPUS MAP

- L) SU-107-2-B-1003-000-A and SU-107-2-B-1003-001-A (100 Oakdale Road, Johnson City, NY 13790)
- M) SU-107-2-B-1004-000-A (701 Azon Road, Johnson City, NY 13790)
- N) SU-107-2-B-1005-000-A (720 Azon Road, Johnson City, NY 13790)



## START-UP NY: JOHNSON CITY CAMPUS MAP

Architectural floor plan of SU-107-2-B-1003-000-A (35,491 sq. ft.). The plan shows a large rectangular building with a green outline. Key areas include:

- RECEIVING OFFICE AREA - 288 SQ FT** (top left)
- STORAGE AREA 16,832 SQ FT** (top center)
- STORAGE AREA 9,818 SQ FT** (top right)
- STORAGE AREA 11,745 SQ FT** (bottom left)
- STORAGE AREA 11,727 SQ FT** (bottom center)
- STORAGE AREA 11,400 SQ FT** (bottom right)
- UNLSES FLOOR AREA 4,777 SQ FT** (far left)
- COVERED DOCK 14.8 X 105.8** (far right)
- STORAGE AREA 11,400 SQ FT** (bottom right corner)

The plan also includes various dimensions, room numbers, and a north arrow.

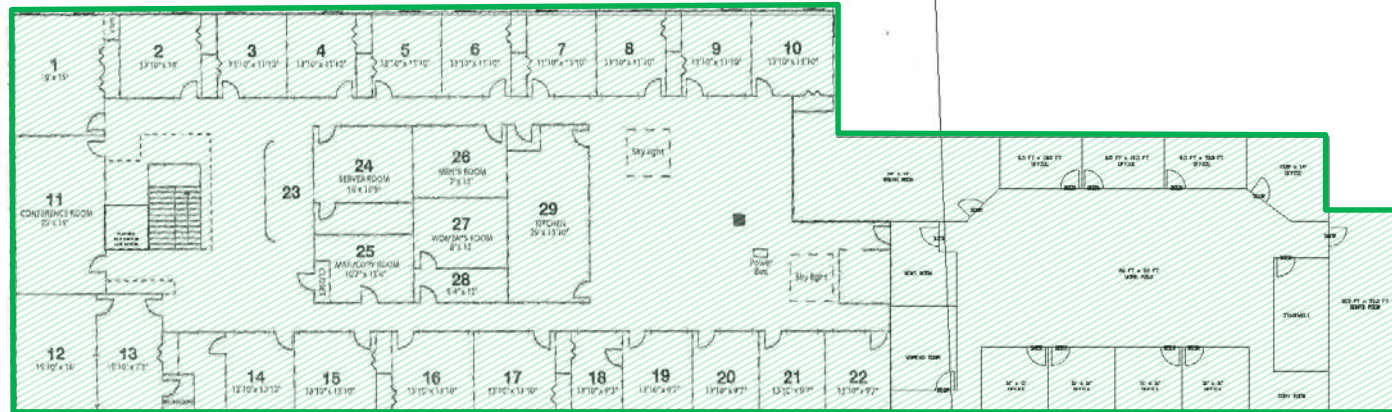


# BINGHAMTON UNIVERSITY

START-UP NY: JOHNSON CITY CAMPUS MAP

ECO NUMBER	DATE
100925A	09/25/18

M) SU-107-2-B-1004-000-A 24,788 sq. ft. total: Second Floor 12,999 sq. ft. (701 Innovation Way, Johnson City, NY 13790)



PROPOSAL LAYOUT ONLY  
NO SCALE  
09/25/18

FILE NO.

THIS DOCUMENT, SUBMITTED IN CONNECTION WITH THE PROPOSAL FOR THE DESIGN AND CONSTRUCTION OF THE JOHNSON CITY CAMPUS, IS THE PROPERTY OF INNOVATION ASSOCIATES. IT IS TO BE USED ONLY FOR THE PURPOSES SPECIFIED IN THE PROPOSAL. IT IS NOT TO BE REPRODUCED, COPIED, OR DISTRIBUTED IN ANY MANNER WITHOUT THE WRITTEN PERMISSION OF INNOVATION ASSOCIATES. INNOVATION ASSOCIATES SHALL BE RESPONSIBLE FOR THE ACCURACY OF THE INFORMATION CONTAINED HEREIN. NO WARRANTY IS MADE BY INNOVATION ASSOCIATES FOR THE ACCURACY OF THE INFORMATION CONTAINED HEREIN. THE DOCUMENT SHALL BE RETURNED TO INNOVATION ASSOCIATES.

INCH FORMAT  
**INNOVATION**  
INNOVATION ASSOCIATES  
JOHNSON CITY, NY 13790

PART NO.	W&E NO.
1	1
NAME	INNOVATION ASSOCIATES
DESIGNER	INNOVATION ASSOCIATES
CHECKED	INNOVATION ASSOCIATES
APPROVED	INNOVATION ASSOCIATES
DATE	09/25/18
BY	KAH

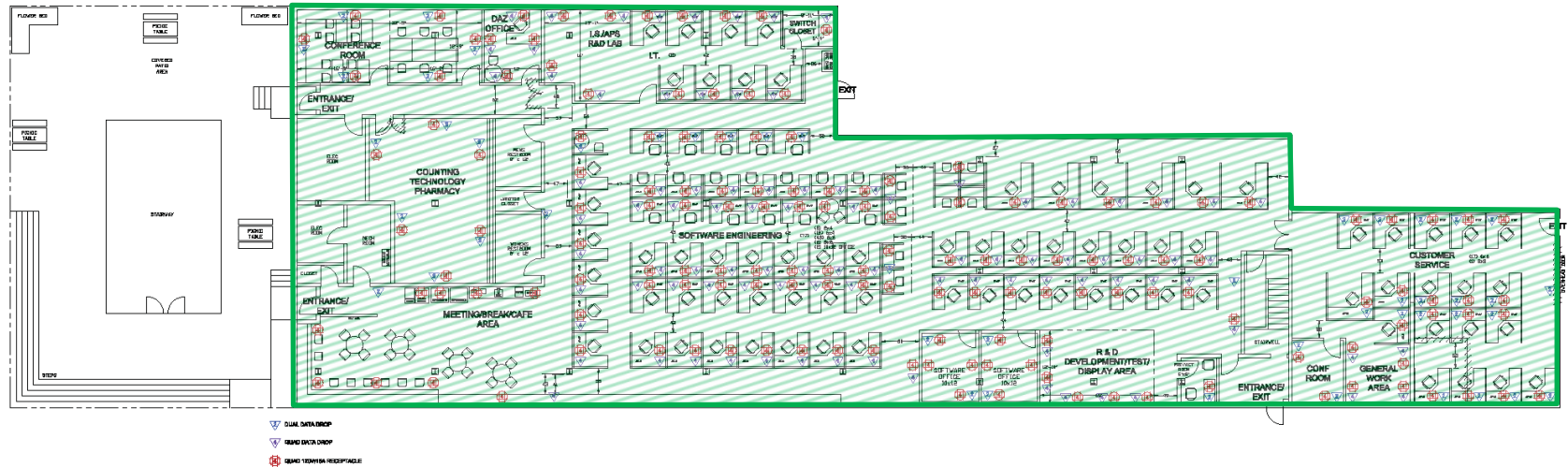
Signature: \_\_\_\_\_ Date: \_\_\_\_\_ Signature: \_\_\_\_\_ Date: \_\_\_\_\_

# BINGHAMTON UNIVERSITY

START-UP NY: JOHNSON CITY CAMPUS MAP

ECO NUMBER	DATE
180925A	09/25/18

M) SU-107-2-B-1004-000-A 24,788 sq. ft. total: First Floor 11,789 sq. ft. (701 Innovation Way, Johnson City, NY 13790)



PROPOSAL LAYOUT ONLY  
NO SCALE  
09/25/18

FILE NO.

THIS DOCUMENT, SUBMITTED IN CONNECTION WITH THE PROPOSAL, IS THE PROPERTY OF INNOVATION ASSOCIATES. IT IS TO BE USED ONLY FOR THE PURPOSES OF THE PROPOSAL AND IS NOT TO BE REPRODUCED, COPIED, OR TRANSMITTED IN ANY FORM OR BY ANY MEANS, ELECTRONIC OR MECHANICAL, INCLUDING PHOTOCOPYING, RECORDING, OR BY ANY INFORMATION STORAGE AND RETRIEVAL SYSTEM, WITHOUT THE WRITTEN PERMISSION OF INNOVATION ASSOCIATES. INNOVATION ASSOCIATES SHALL BE RESPONSIBLE FOR THE ACCURACY OF THE INFORMATION CONTAINED HEREIN. THE INFORMATION CONTAINED HEREIN IS PROVIDED AS IS, WITHOUT WARRANTY OF ANY KIND, INCLUDING THE IMPLIED WARRANTY OF MERCHANTABILITY. INNOVATION ASSOCIATES SHALL NOT BE LIABLE FOR ANY DAMAGES, INCLUDING CONSEQUENTIAL DAMAGES, ARISING OUT OF THE USE OF THE INFORMATION CONTAINED HEREIN. THE INFORMATION CONTAINED HEREIN IS NOT TO BE USED FOR ANY PURPOSES OTHER THAN THE PURPOSES OF THE PROPOSAL.

INCH FORMAT

D

PART NO.	SHEET NO.
1	1 of 1
NAME	INNOVATION ASSOCIATES
DESIGNER	701 ACORN RD 1st FLOOR
CHECKED	KH 09/25/18
APPROVED	
DETAILED BY	KAH 09/25/18

**INNOVATION**

INNOVATION ASSOCIATES  
JOHNSON CITY, NY 13790

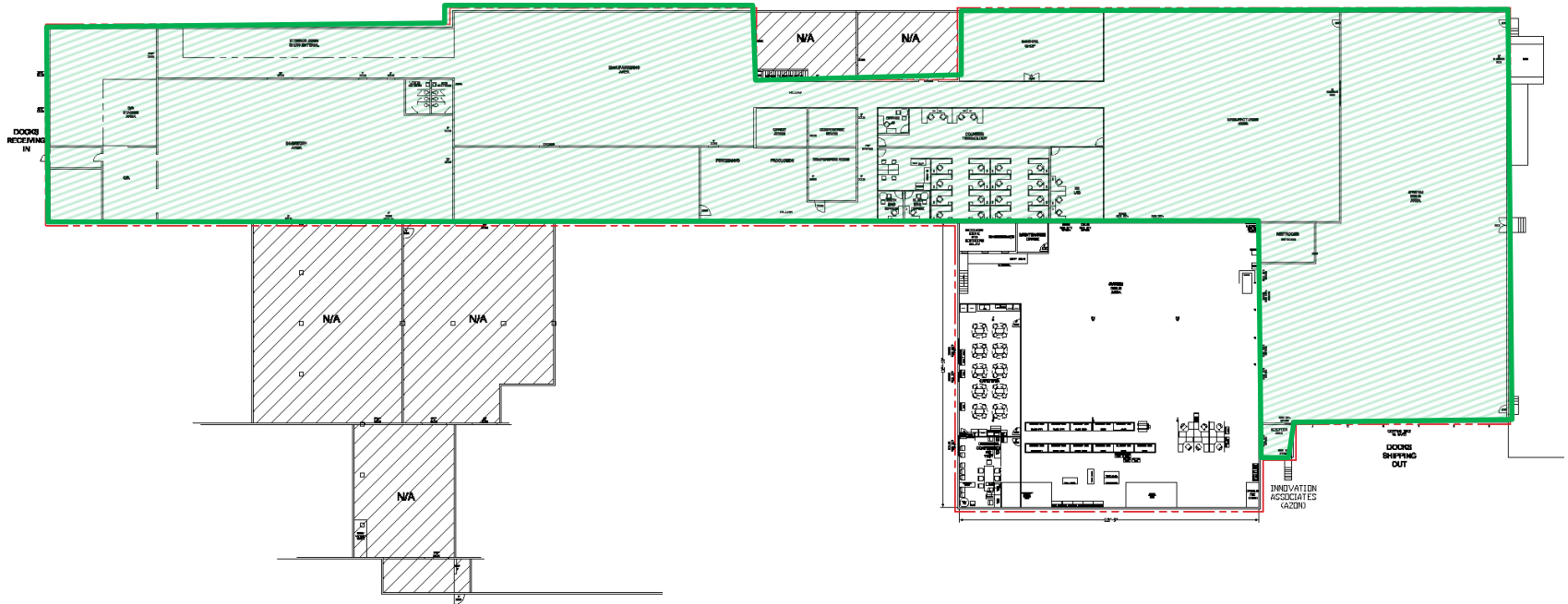
Signature: \_\_\_\_\_ Date: \_\_\_\_\_ Signature: \_\_\_\_\_ Date: \_\_\_\_\_ Signature: \_\_\_\_\_ Date: \_\_\_\_\_

# BINGHAMTON UNIVERSITY

START-UP NY: JOHNSON CITY CAMPUS MAP

N) SU-107-2-B-1005-000-A 52,369 sq. ft. (720 Innovation Way, Johnson City, NY 13790)

ECO NUMBER	DATE
180925A	09/25/18



PROPOSAL LAYOUT ONLY  
NO SCALE  
09/25/18

FILE NO.

THIS DOCUMENT, SUBMITTED IN CONNECTION WITH THE PROPOSAL, IS THE PROPERTY OF INNOVATION ASSOCIATES. IT IS TO BE USED FOR THE PURPOSES OF THE PROPOSAL ONLY. IT IS NOT TO BE REPRODUCED, COPIED, OR DISTRIBUTED IN ANY MANNER WITHOUT THE WRITTEN PERMISSION OF INNOVATION ASSOCIATES. IF YOU ARE NOT A REPRESENTATIVE OF INNOVATION ASSOCIATES, YOU ARE NOT TO BE REPRODUCED, COPIED, OR DISTRIBUTED IN ANY MANNER WITHOUT THE WRITTEN PERMISSION OF INNOVATION ASSOCIATES. IF YOU ARE A REPRESENTATIVE OF INNOVATION ASSOCIATES, YOU ARE NOT TO BE REPRODUCED, COPIED, OR DISTRIBUTED IN ANY MANNER WITHOUT THE WRITTEN PERMISSION OF INNOVATION ASSOCIATES. IF YOU ARE A REPRESENTATIVE OF INNOVATION ASSOCIATES, YOU ARE NOT TO BE REPRODUCED, COPIED, OR DISTRIBUTED IN ANY MANNER WITHOUT THE WRITTEN PERMISSION OF INNOVATION ASSOCIATES.

INCH FORMAT

PART NO.

SHEET NO.

**INNOVATION**

INNOVATION ASSOCIATES  
JOHNSON CITY, NY 13790

NAME	INNOVATION ASSOCIATES
DESIGNER	720 AZOR RD
CHECKED	MI
APPROVED	09/25/18
DETAILED BY	KAH
	09/25/18

Signature: \_\_\_\_\_ Date: \_\_\_\_\_ Signature: \_\_\_\_\_ Date: \_\_\_\_\_ Signature: \_\_\_\_\_ Date: \_\_\_\_\_