



Empire State
Development

POWER UP Grant Program

12/10/25



Marcy Nanocenter Site Substation

Table of Contents

01 Introduction	<i>3</i>
02 Goals of POWER UP	<i>5</i>
03 Manufacturing in NY	<i>6</i>
04 ESD / DPS Coordination	<i>8</i>
05 FAST NY / POWER UP	<i>11</i>
06 Eligibility	<i>14</i>
07 Application Process	<i>17</i>
08 Awards	<i>21</i>
09 Site Development Resources	<i>24</i>

Introduction



Jeff Janiszewski

Senior Vice President, Strategic Business
Development/Global NY
Empire State Development



Jessica Waldorf

Chief of Staff, Director of Policy
Implementation
Department of Public Service



David Whipple

Senior Director, Industry Development
Empire State Development

Introduction – What do we hope to accomplish with POWER UP?



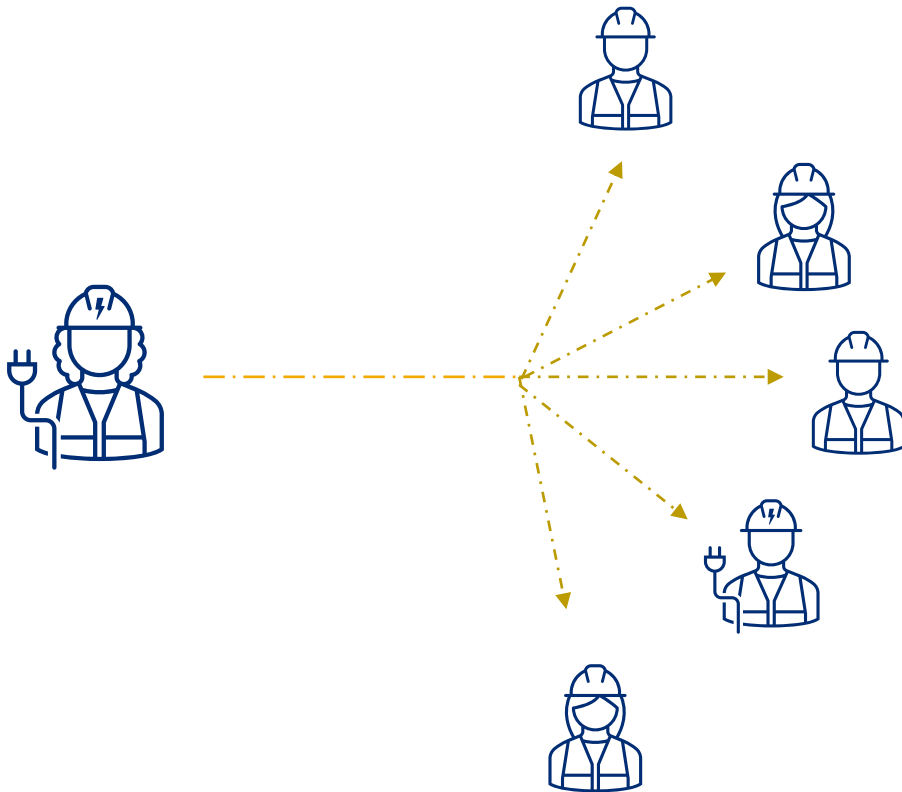
Jeff Janiszewski
Senior Vice President, Strategic
Business Development/Global NY
Empire State Development



Jessica Waldorf
Chief of Staff, Director of Policy
Implementation
Department of Public Service

“Bringing advanced manufacturing businesses that will create good-paying jobs in New York State has been a pillar of my administration, and that requires a proactive strategy that adapts to meet the needs of modern employers,” Governor Hochul said. “As businesses grow and technologies evolve, more power capacity is needed, and POWER UP will help ensure that our sites are shovel-ready and power-ready. We're investing in our infrastructure today to build New York's economy of tomorrow.”

Significance of Manufacturing in NY



- Manufacturing jobs are a great **jobs multiplier**.
- For every **one worker** in the industry – **4.8 jobs are supported**.

Source: National Association of Manufacturers (NAM)

<https://nam.org/mfgdata/facts-about-manufacturing-expanded/>

Manufacturing Trends & Challenges

Companies' power needs

Power challenges they face



Stable and abundant power

10+ MW

The amount of power routinely requested by microelectronics, clean tech companies, agribusiness manufacturers. Some demands are as great as 50MW to over 100MW



Rapid availability

4 years

The average amount of time it takes to deliver and install new industrial scale transformers at sites in NYS.

Shovel Ready / Power Ready Sites

Site Selector's Guild Survey:

***Shovel ready sites
are the #1 incentive***

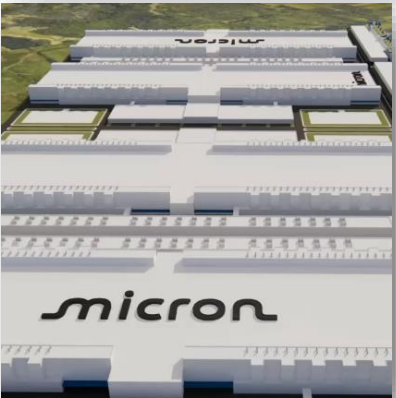


Prior Proactive Electric Infrastructure Investments



Griffiss Business and Technology Park

Chobani
Jobs created: 1000



White Pine Commerce Park

Micron
Jobs created: 9000



Xerox Campus / Tebor Road

fairlife
Jobs created: 250



Marcy Nanocenter

Cree / Wolfspeed
Jobs created: 600

Prior Proactive Electric Infrastructure Investments



Luther Forest

Global Foundries
Jobs created: 1,500 +



Port of Albany

Focus on maritime manufacturing
Part of a \$170m + pad ready initiative
Jobs created: TBD



WNY STAMP

Edwards Vacuum
Jobs created: 600

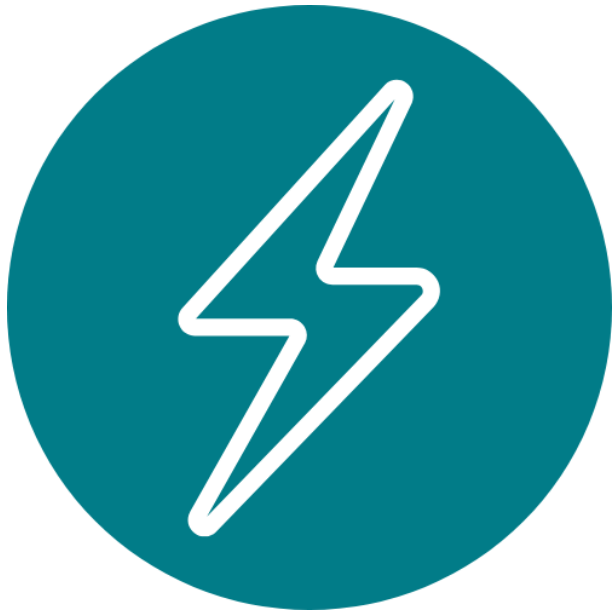


Silver City Industrial Park

City of Sherill
Briggs and Stratton
Jobs created / retained: 500+

POWER UP Goals

The POWER UP program will focus on proactively developing electrical infrastructure at key industrial sites.



- Improve the power-readiness of existing, mature sites by funding improvements to the power infrastructure
- Prepare an emerging pipeline of future power-ready sites and act as a complement to Empire State Development's FAST NY grant program, which is creating a pipeline of current and future shovel-ready sites across the state. Both programs will act in unison to attract key industries and speed up the process to commercialization for businesses.

ESD / DPS Coordination

Empire State Development:

- Empire State Development (ESD) will administer POWER UP in consultation with the Department of Public Service (DPS). ESD will lead program administration and site evaluation

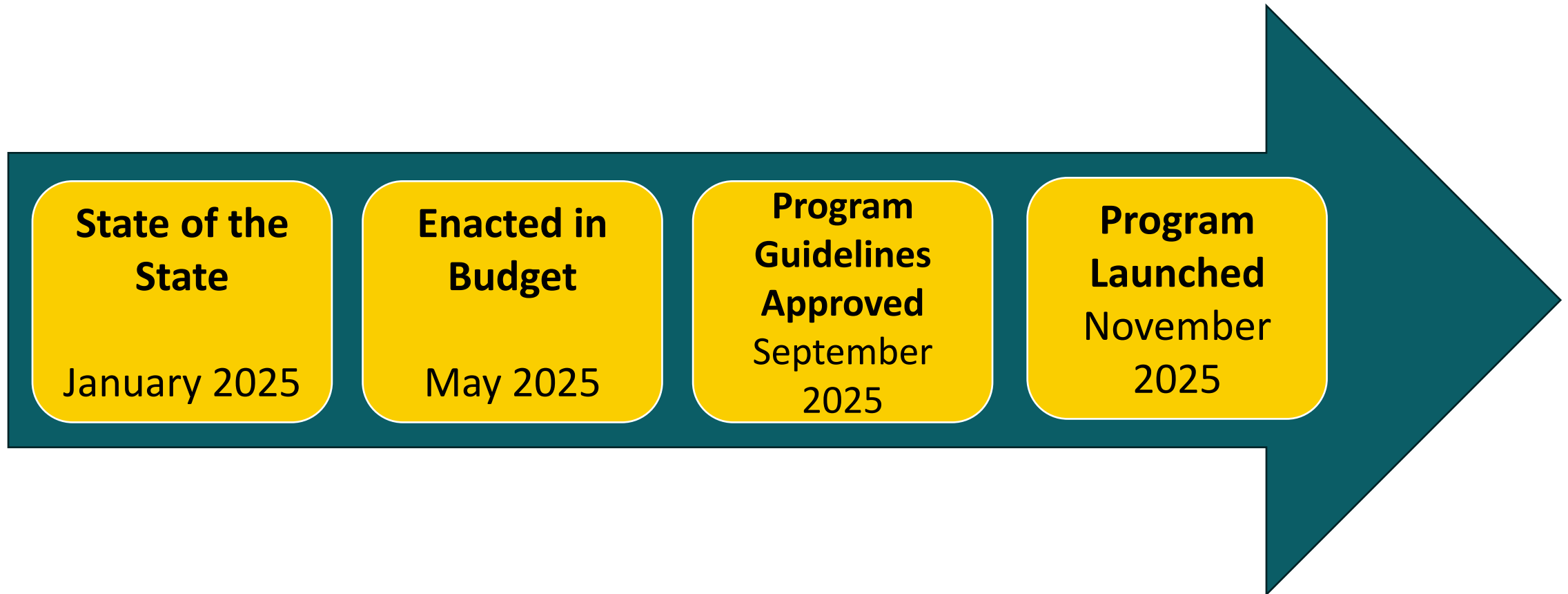


Department of Public Service:

- DPS will provide advisory input, leveraging its knowledge of utility capital planning to ensure that proposed infrastructure investments are technically sound and aligned with regulatory requirements and public interest objectives.



POWER UP – Progress to date



Eligible Applicants

- **Eligible Applicants include:**

- Utilities, including:
 - Regulated Utility Companies; Public Power Authorities; Municipal Utilities; Electric Cooperatives; & Other corporate structures as approved by ESD
- Industrial Development Agencies (IDAs)
- Municipalities
- Local Development Corporations (LDCs)
- Municipally Designated Economic Development Organizations (EDOs)

- **Applicants must either:**

- have ownership or control of the site, or
- provide written consent from the ownership entity and, if different, the entity that has legal control of the site agreeing to use POWER UP funds as outlined in the application.

Eligible Industries / Eligible Sites

Eligible Industries:

- Must be targeted to attract the following sectors:
 - high-tech manufacturing, including but not limited to semiconductors, renewable energy, life sciences, agribusiness, optics, transportation equipment, or materials processing.
 - Other priority sectors as determined by ESD.
- Non targeted sectors:
 - Retail
 - Data centers

Eligible Sites:

- Must be a **minimum of 40 contiguous developable acres** in size and demonstrate a high-level of readiness with respect to preliminary engineering, feasibility studies, and engagement with electric utility providers.
 - a. Waivers may be granted by ESD for smaller sites that demonstrate exceptional public benefits or strategic value
- **Industrial campuses with significant vacancy** and underutilized infrastructure shall be eligible, even in the absence of new developable land, provided the existing structures can be adapted for use by an eligible strategic industry and require power-related upgrades to become viable.

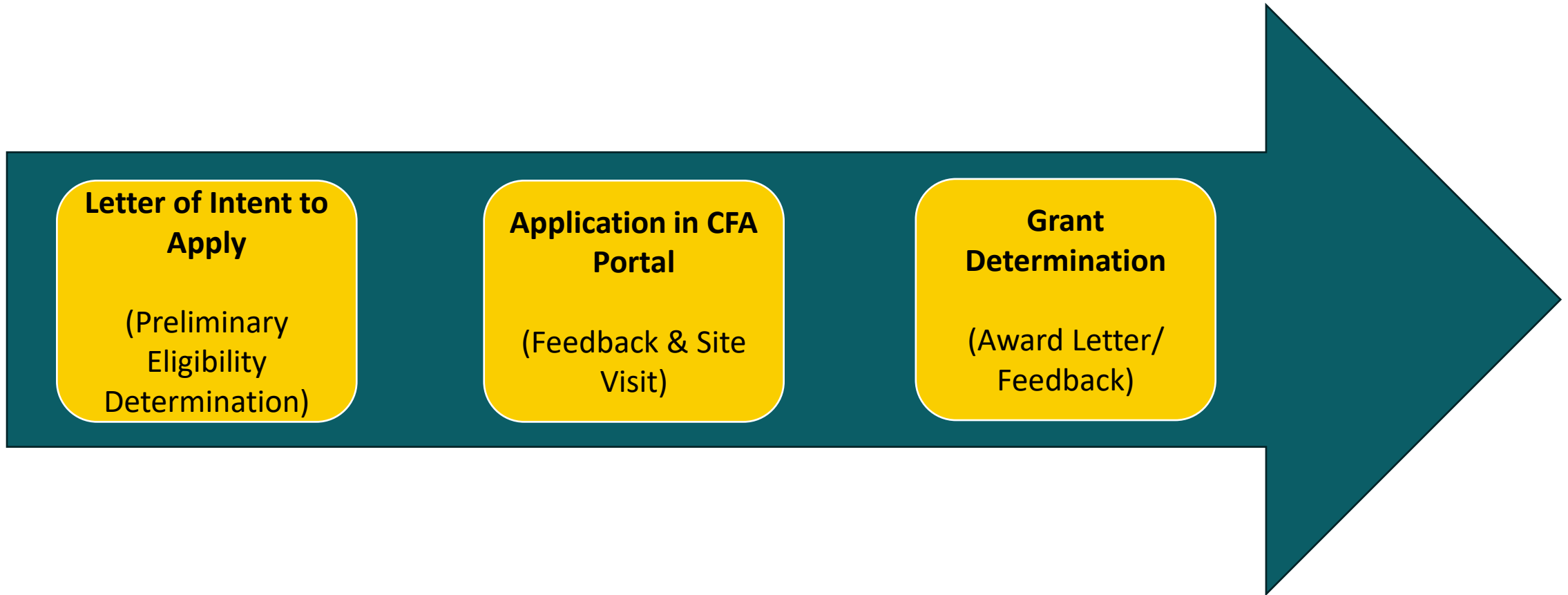
Eligible Costs

Eligible Costs:

- Capital grants will be awarded to enhance the power readiness of mature industrial sites by funding critical infrastructure upgrades. Eligible improvements include, but are not necessarily limited to:
 - electrical infrastructure such as transformers, conductors, buses, switches, insulators, substations, and poles; and,
 - utility conduits, including conduit and duct banks;
 - technology and monitoring systems such as monitoring equipment, energy storage, and alternative energy system components
 - non-electrical infrastructure costs, such as masonry, fencing, excavation, structural fill, site restoration, and property acquisition, may also be eligible if essential for the implementation of the POWER UP project.
 - Other costs as determined by ESD.



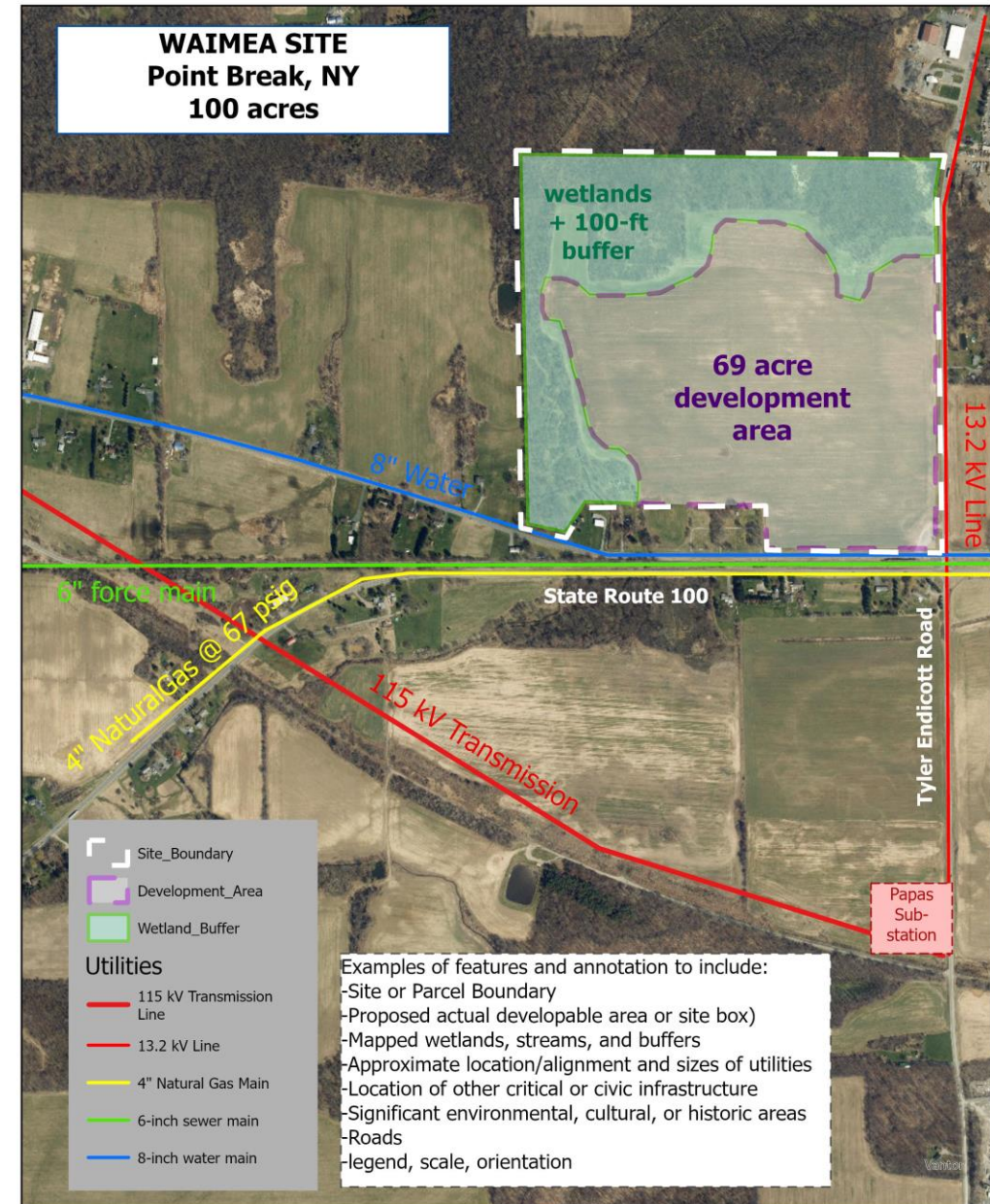
Rolling Application Process



Application

Process improvements

- Half the questions / detailed requests for attachments
- Application resources / guides
- Engagement during application process on MWBE / SDVOB goals



Scoring Criteria

- Documented research and/or market study showing the specific industry that will be targeted and the specific infrastructure needs. Applicant must demonstrate that the requested infrastructure will serve to help attract the specified economic development
- Documentation of engagement with electric utility providers needed for infrastructure. A detailed and documented plan for how infrastructure upgrade(s) will be accomplished is required.
- Demonstration of industry interest (ie. studies, leads, tenant interest/commitments)
- Financial viability
- Alignment with REDC strategy
- Leveraged investment
- Quality of shovel-readiness documentation
- Favorable site characteristics (topography, developability, useable acreage, etc)
- Highway and truck access to meet needs of intended use and utility services to site to meet needs of intended use
- Other strategic site characteristics (brownfield, urban center, smart growth, etc.)
- Applicant's development experience
- Quality of marketing plan

Awards

- Match – applicants with higher match percentages while maintaining project viability will be scored favorably
- Non eligible uses - will be subject to cancellation or recapture of grant
- MWBE utilization goals – when the applicant has adequate documentation during application period, it is possible that a custom MWBE utilization goal can be applied
- 1% commitment fee



FAST NY / POWER UP

FAST NY:

- General shovel ready program serving key industrial sites
- Track C – capital grants for:
 - Water / sewer
 - Transportation
 - Site work
 - Electrical infrastructure – most will now be served via POWER UP
 - Other
- Track B – will continue to serve pre-permitting, engineering, etc needs including electricity studies

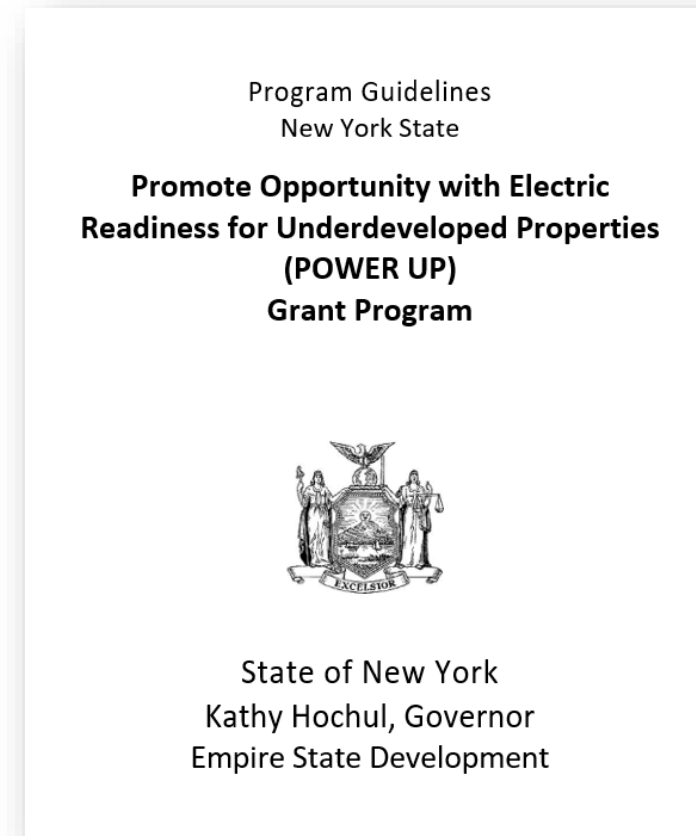
POWER UP:

- Electrical infrastructure program serving key industrial sites
- Capital grants for:
 - Electrical infrastructure such as transformers, conductors, buses, switches, insulators, substations, and poles; and,
 - Utility conduits, including conduit and duct banks;
 - Technology and monitoring systems such as monitoring equipment, energy storage, and alternative energy system components
 - Other costs as determined by ESD.

Read more

Reference Materials and Forms

- POWER UP Quick Reference Guide (2 pg. summary)
- POWER UP Program Guidelines
- Intent to Apply Web Form
- POWER UP Application Instructions
- POWER UP Application Attachment Checklist
- Site Control Affidavit for Non-Municipally Owned Properties
- CFA Application



Questions



Photo - WNY STAMP

Site Development Resources

- Email inquiries to powerup@esd.ny.gov
- To arrange a pre-application discussion, please reach out to:
 - David Whipple, Senior Director, Industry Development – Director POWER UP - David.Whipple@esd.ny.gov
 - Christian Mercurio, Senior Director, Site Development – Site development guidance - Christian.Mercurio@esd.ny.gov
 - Your ESD regional director
- For other energy related questions, reach out to:
 - Your local utility
 - Kevin Luteran, Sr. Advisor, DPS, Kevin.Luteran@dps.ny.gov



Marcy Nanocenter Site, Marcy, NY

THANK YOU

E: powerup@esd.ny.gov



esd.ny.gov/power-up-grant-program