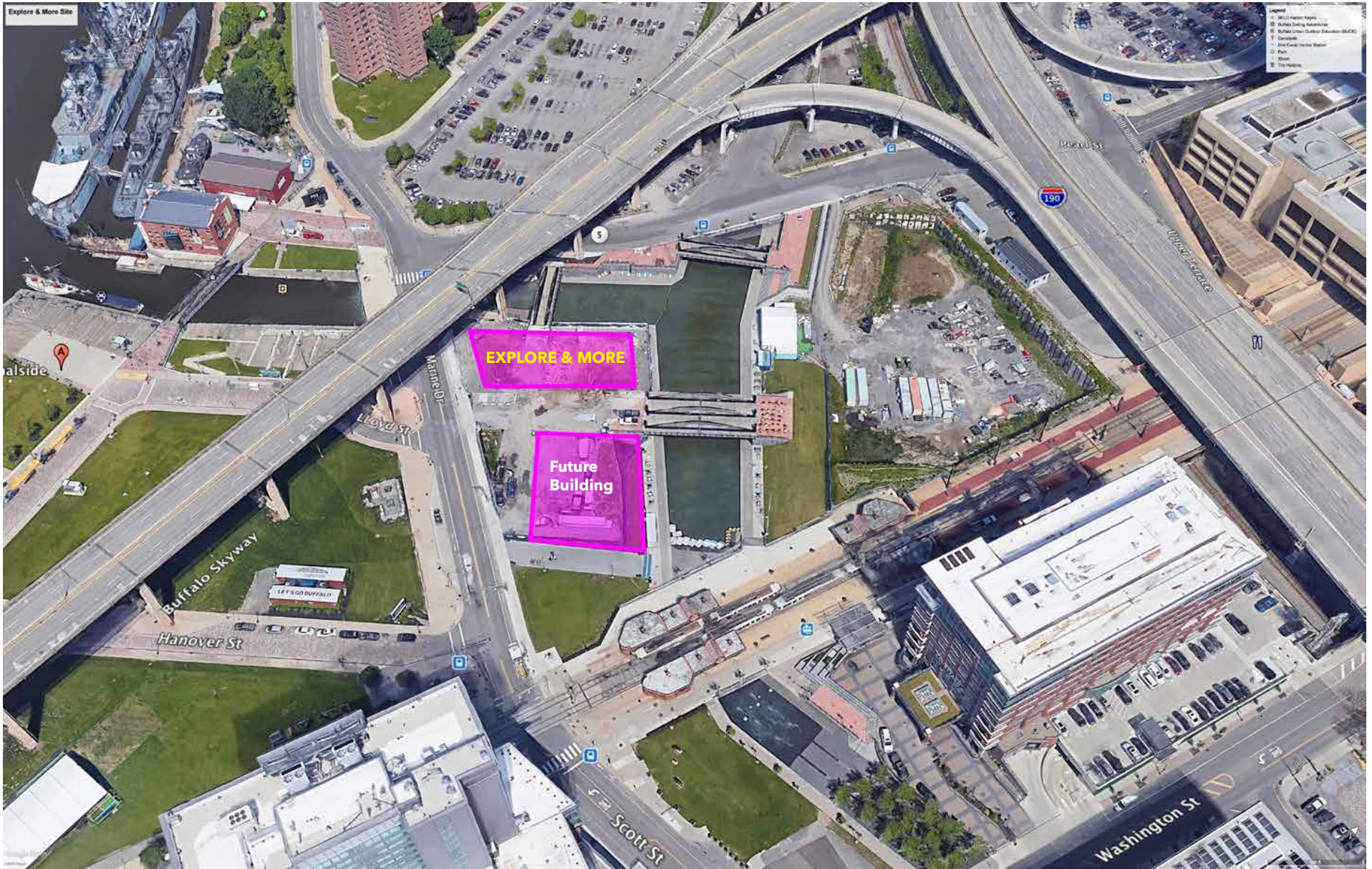


# explore & more

Exterior Signage Development  
12/7/18



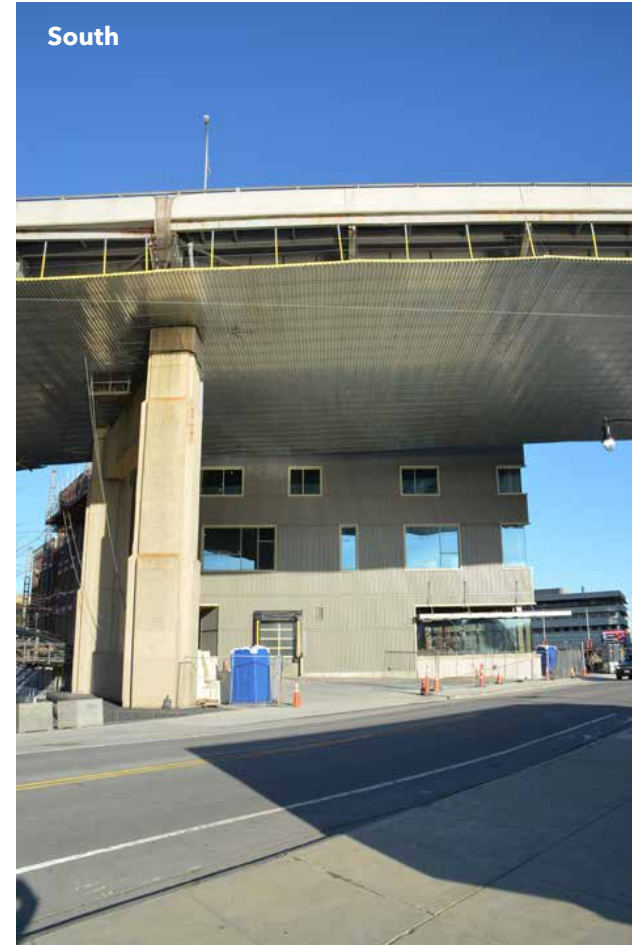
**East**



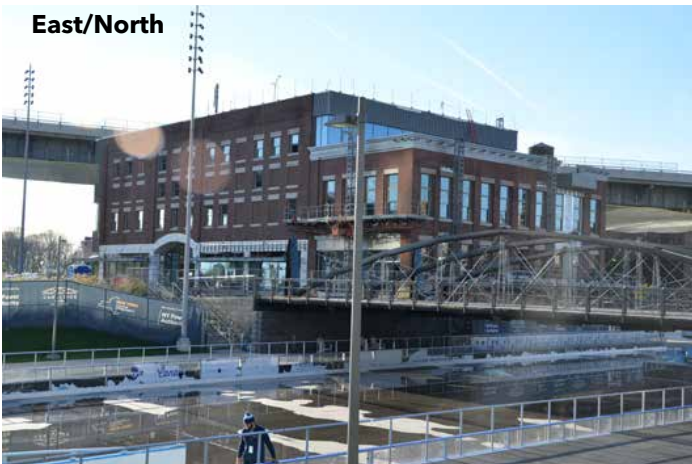
**North**



**South**

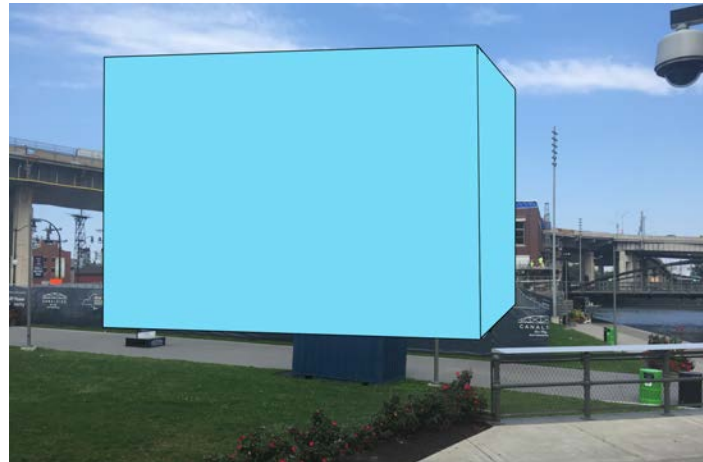
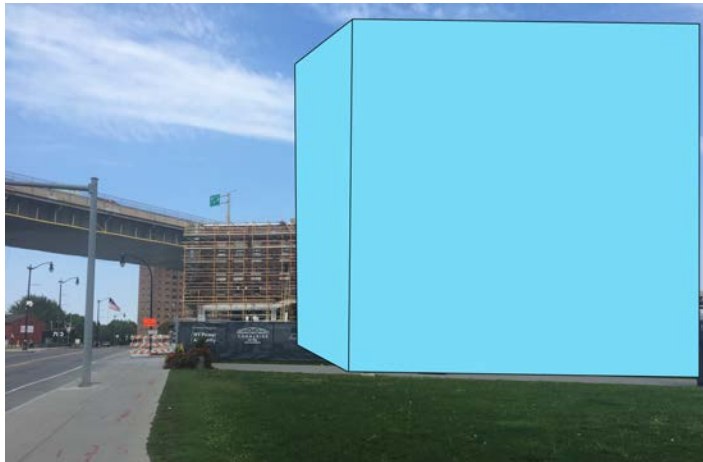
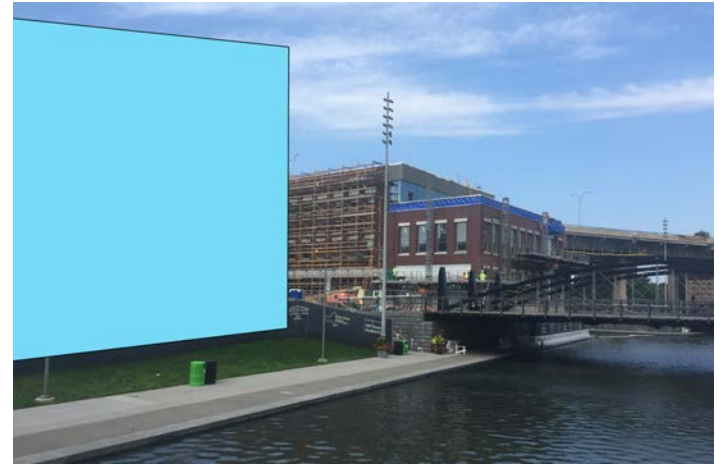
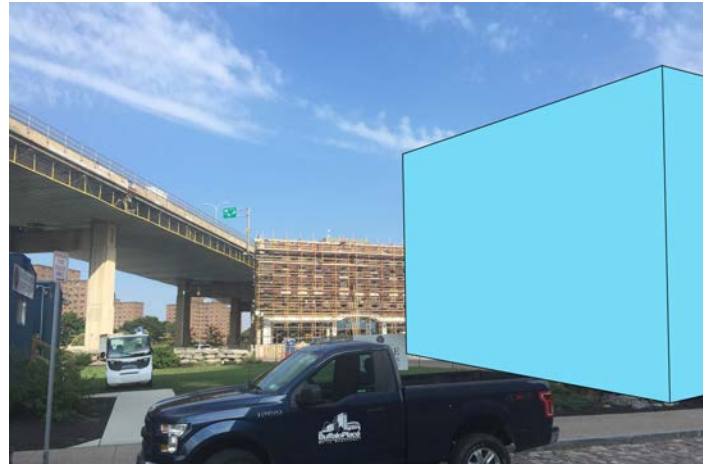
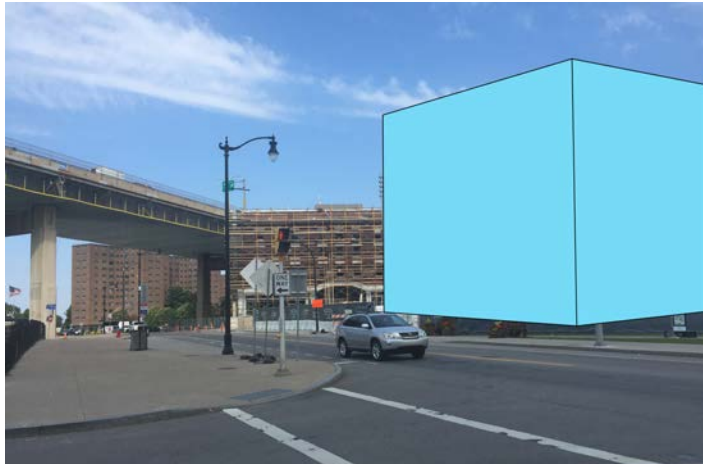


**East/North**



**West**





explore & more

---

THE RALPH C. WILSON, JR. CHILDREN'S MUSEUM

explore  
& more

---

THE RALPH C. WILSON, JR.  
CHILDREN'S MUSEUM

# Signage Placement











# **Design** Enhancements

**ADVENTURE CURIOSITY IMAGINE DISCOVER PLAY WONDER CREATE**

FILSON PRO CAPS

# The BFLO Store

Avenir Next Pro Medium

# LOW BRIDGE CAFE

Rockwell Bold CAPS







# **Potential** Window Graphics

**EAST** View





**PLAY! CREATE CURIOSITY? DISCOVER IMAGINE..**

FILSON PRO

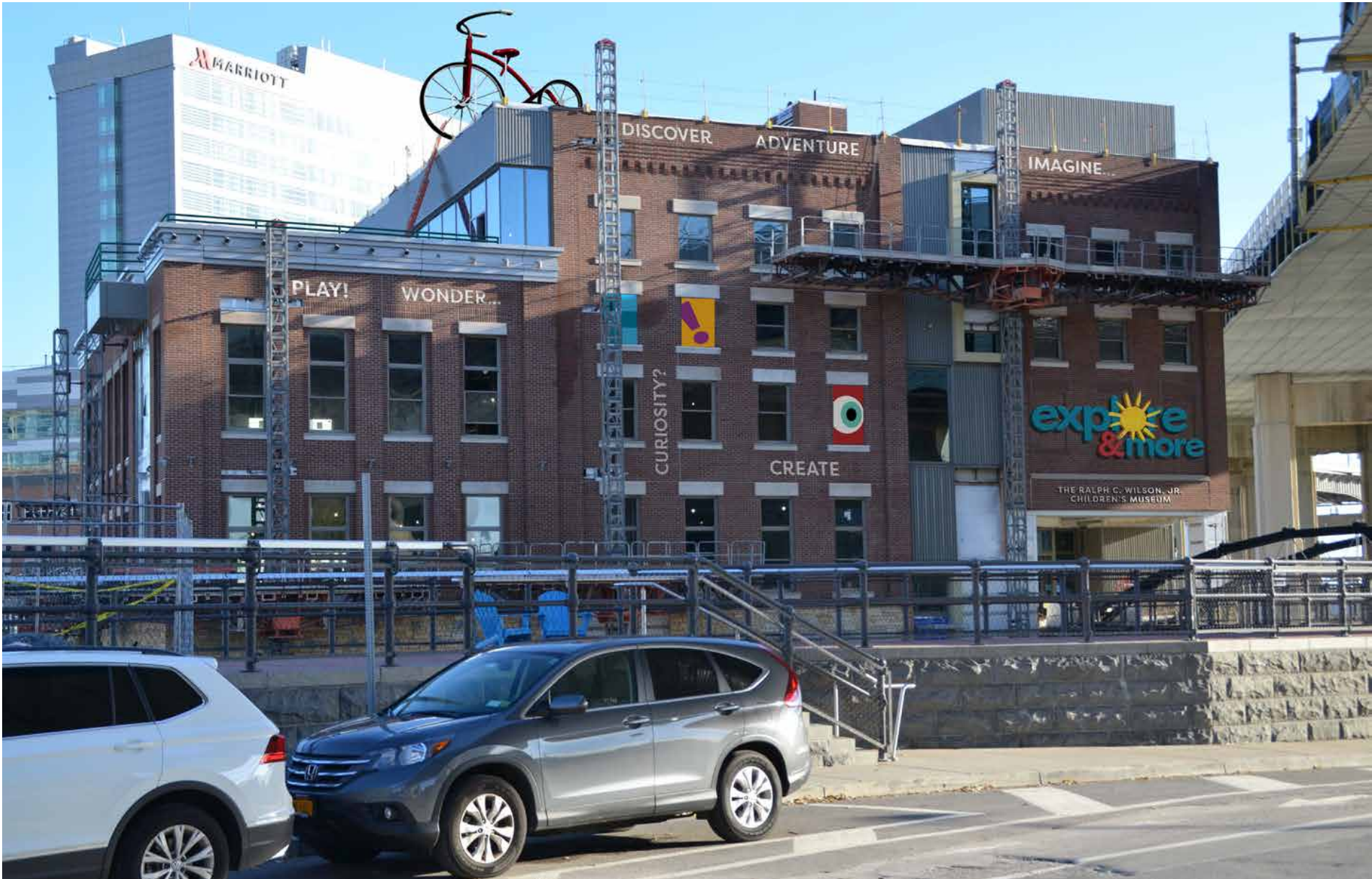


**WEST** View



**PLAY! WONDER... DISCOVER ADVENTURE CURIOSITY? CREATE IMAGINE...**

FILSON PRO

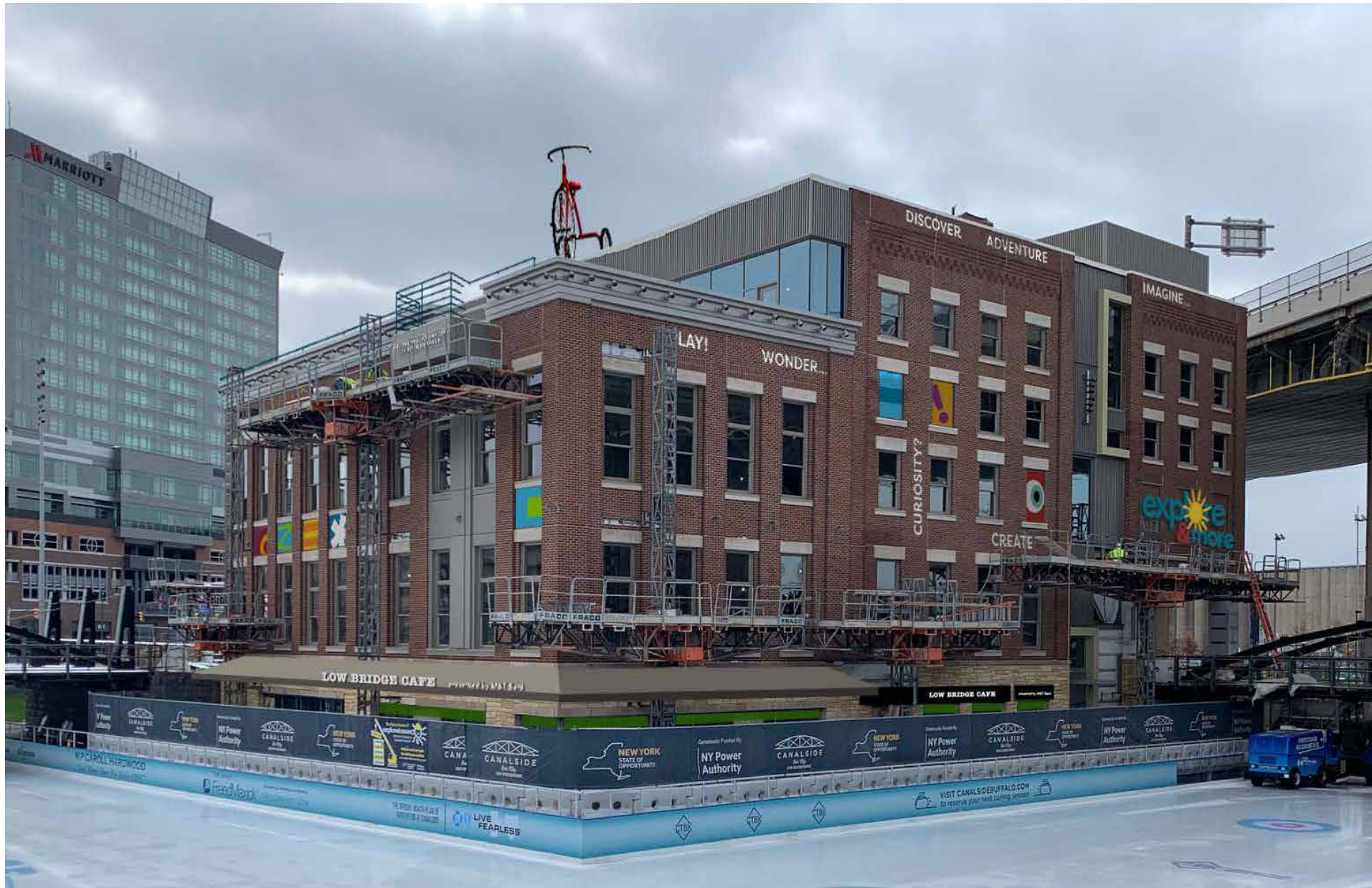


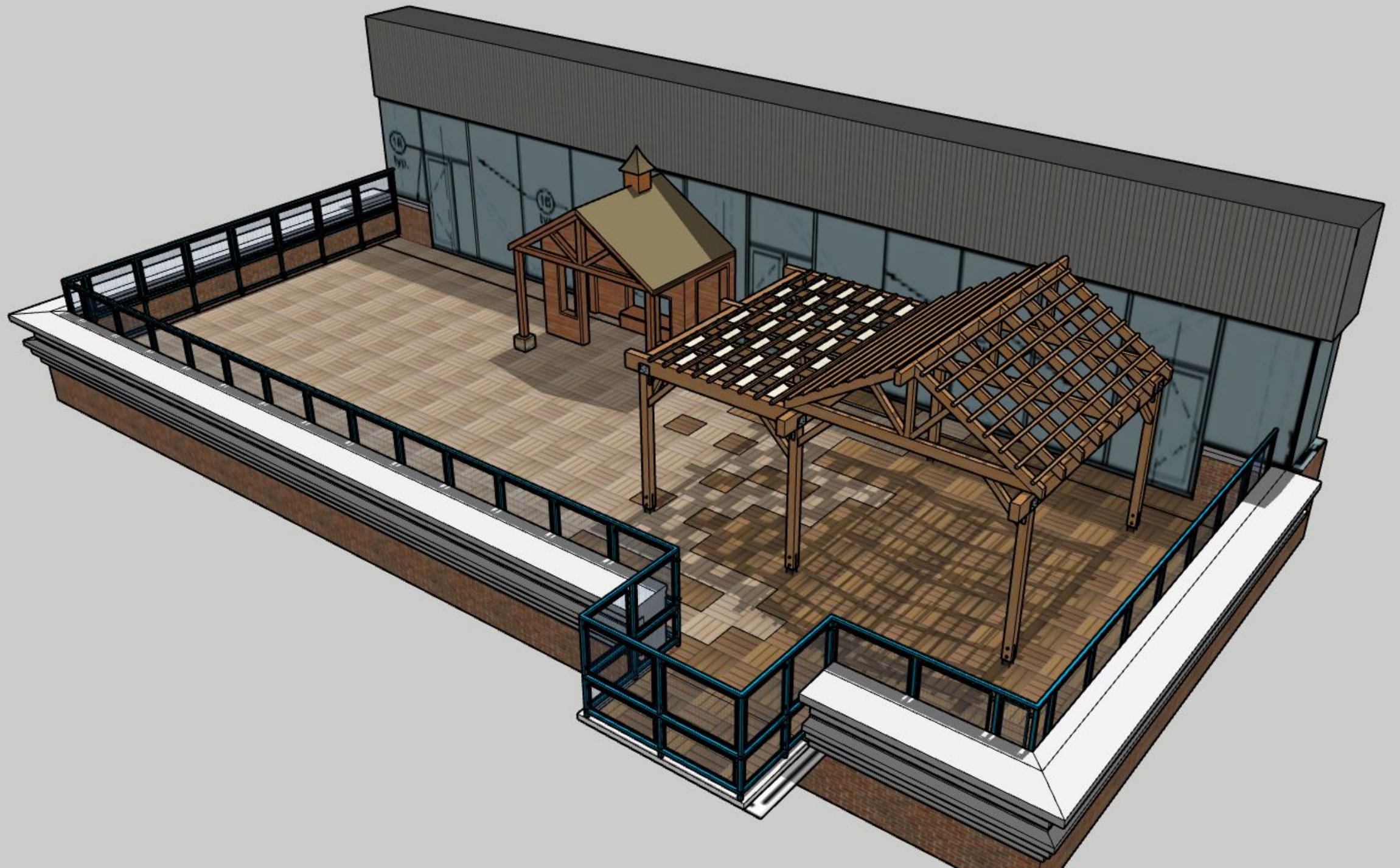
**NORTH** View



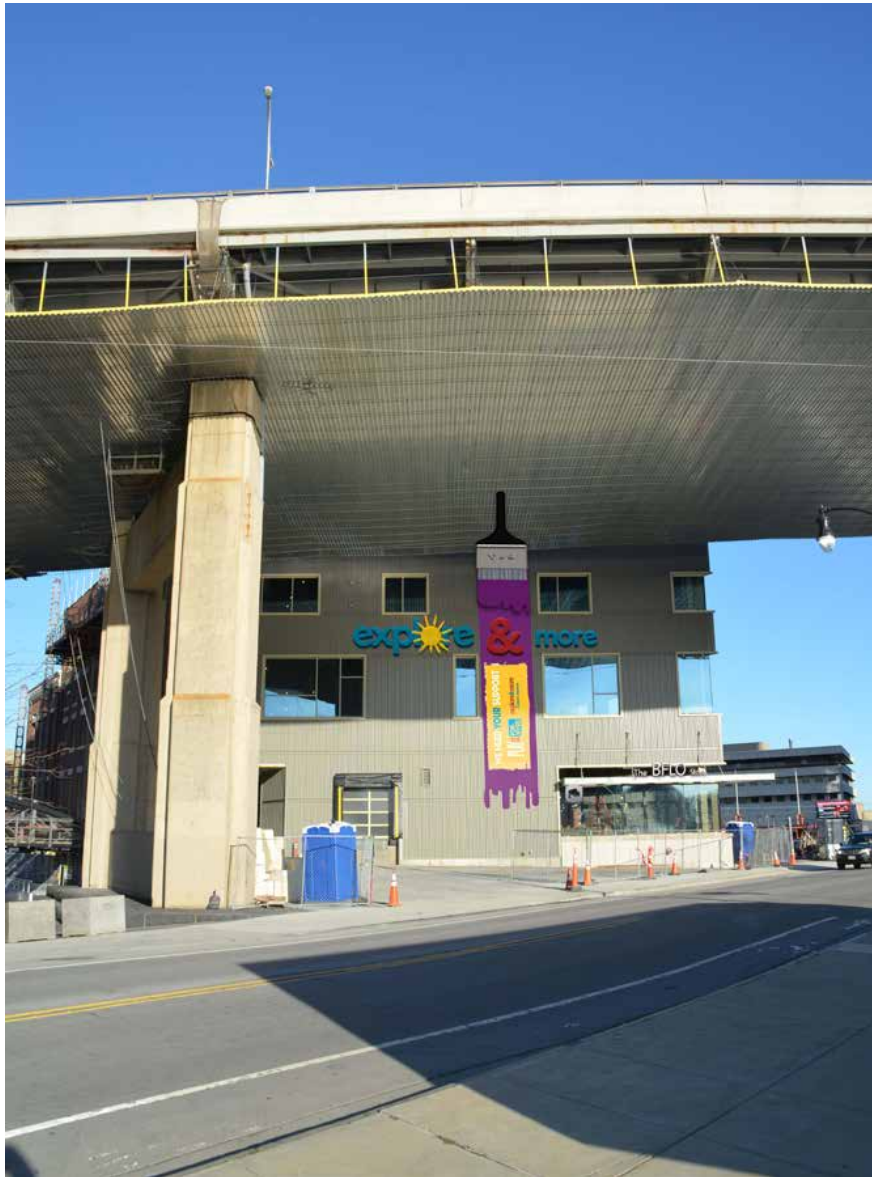




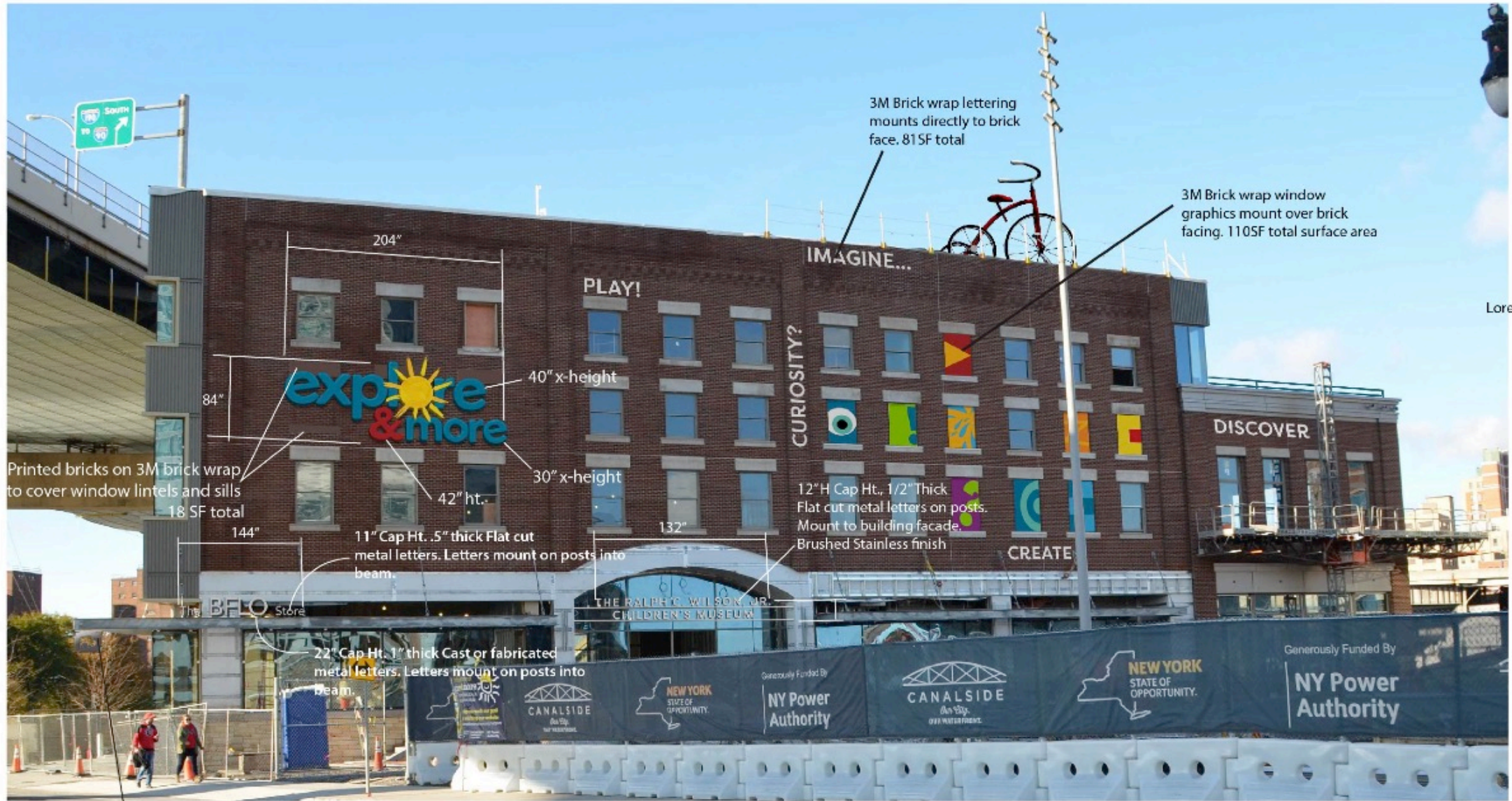




**SOUTH** View



# **Fabrication** & Installation



Lorem ip

29"W x 26"H cutout metal Buffalo plaque Hang from canopy on posts.

\*\*Need to discuss fabrication materials and method for Explore & More logo

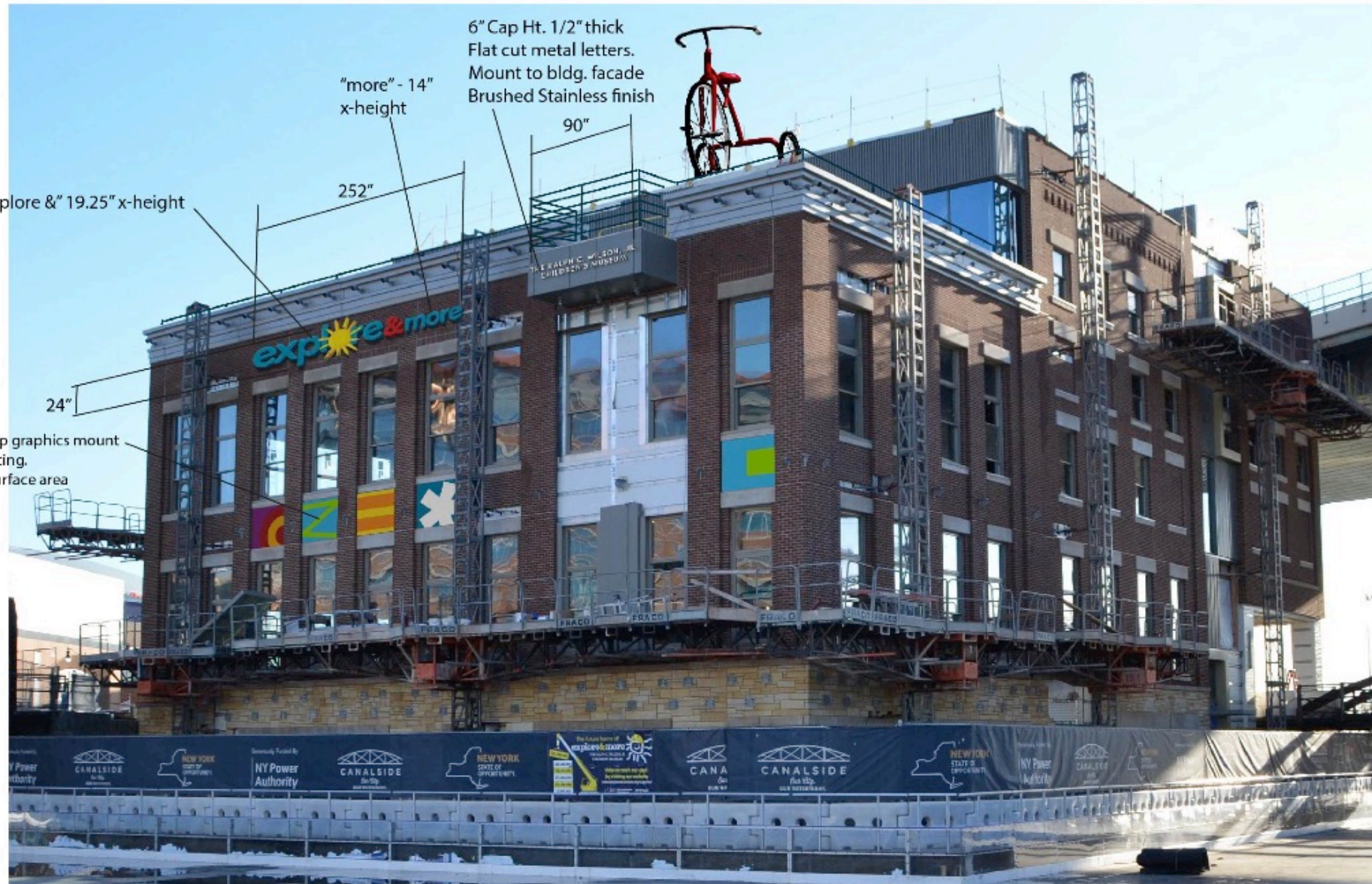


Fabricated letters/logo and support structure. Anchor to concrete base and protect with railing on interior side.

\*\*Need to discuss fabrication materials and method.

East Entrance

n



\*\*Need to discuss fabrication materials and method for Explore & More logo

North Side





\*\*Need to discuss fabrication materials and method for Explore & More logo

3M Brick wrap window graphics mount over brick facing. 64 SF total surface area



10" H, 1/2" Thick flat cut letters. Post on bottom to mount to canopy.

approx 34'-0"

3M Brick wrap over window lintels. 53 SF area

"LOW BRIDGE CAFE"

"presented by M&T Bank"

Install window film. Custom color approx. 75SF total area (12"ht.)

Cafe Signage



\*\*Need to discuss fabrication materials and method  
for Explore & More logo

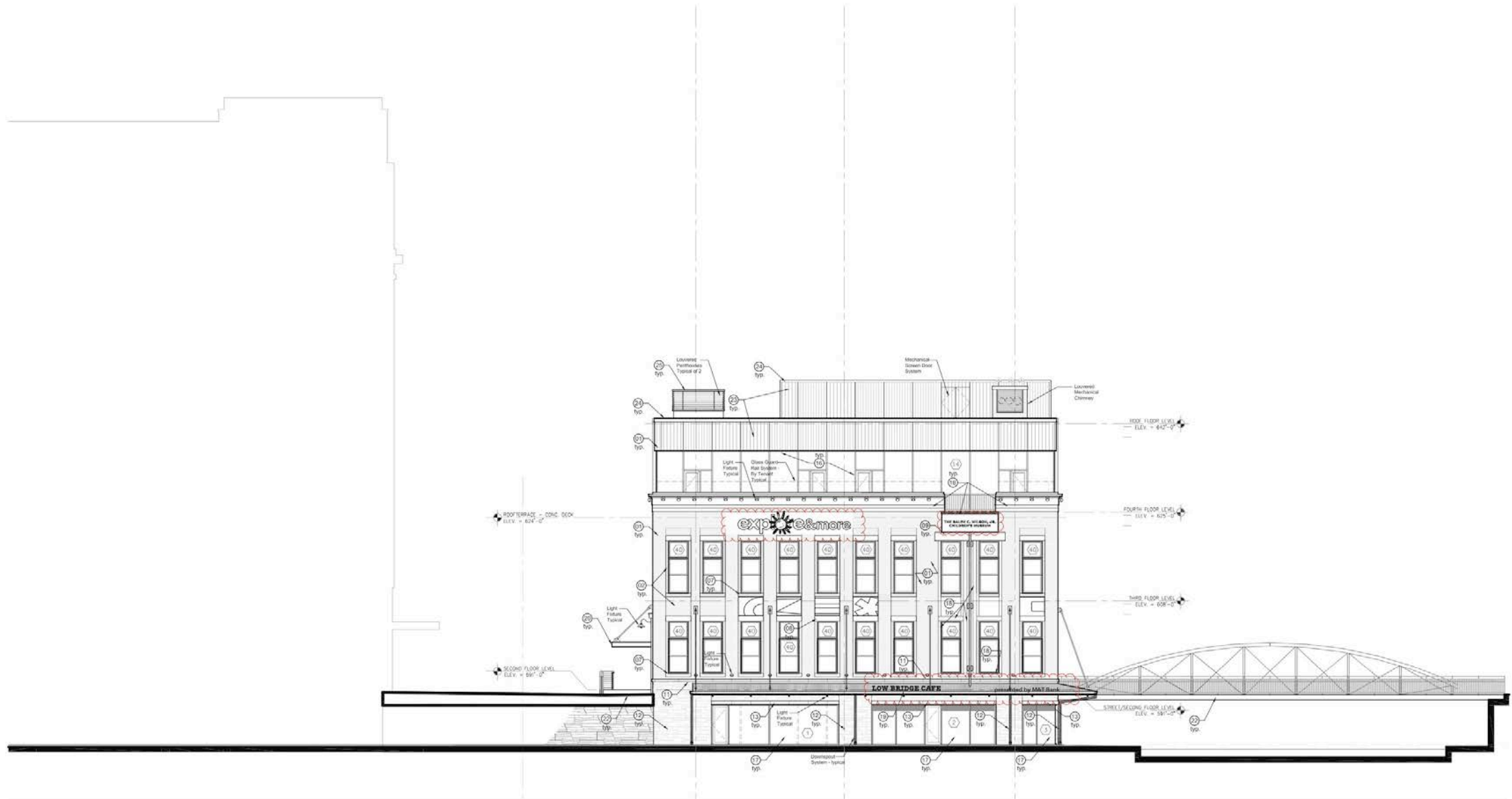
South Side



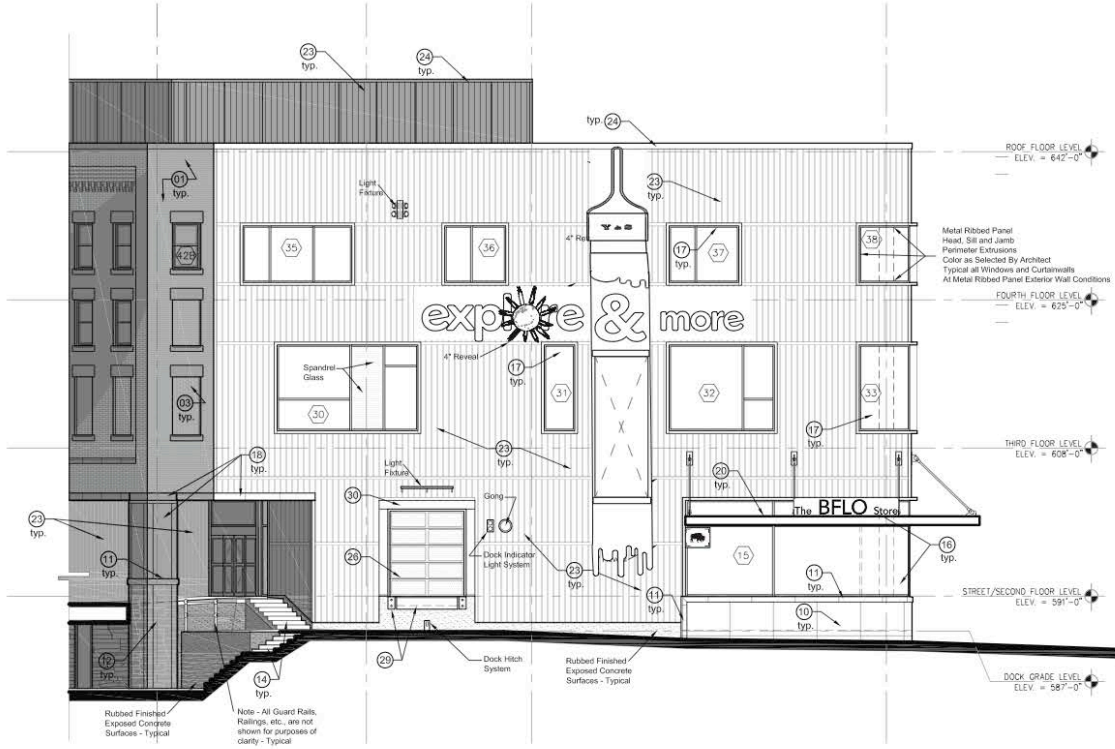
1 EAST EXTERIOR ELEVATION - LLOYD STREET  
 1/8" = 1'-0"



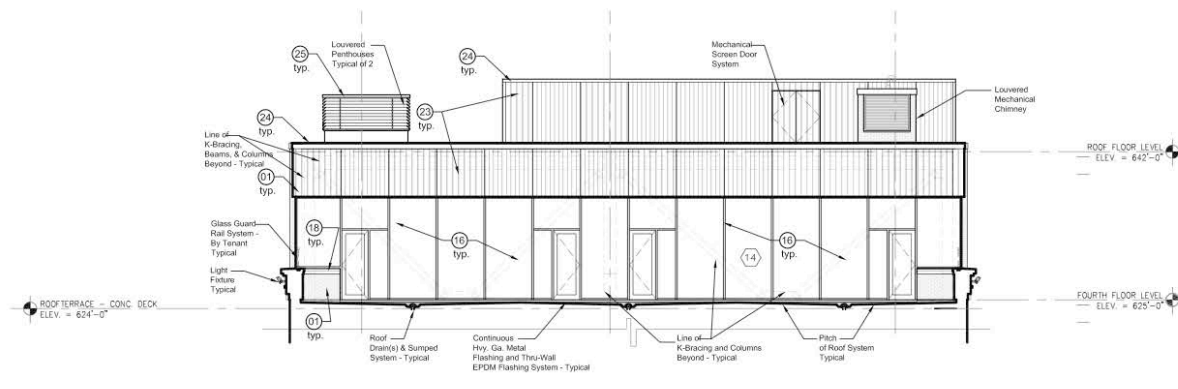
1 WEST EXTERIOR ELEVATION (SOUTH EXTERIOR ELEVATION SPLAYED) - CANAL VIEW  
 1/8" = 1'-0"



1 NORTH EXTERIOR ELEVATION - CANAL VIEW  
 1/4" = 1'-0"



1 SOUTH EXTERIOR ELEVATION - MARINE DRIVE  
1/8" = 1'-0"



2 NORTH EXTERIOR ELEVATION ROOF TERRACE  
1/8" = 1'-0"

# 1. INTRODUCTION

## FAÇADES



- 1 BENCHMARK By Kingspan Insulated Metal Panel (Barrier Wall)
- 2 BENCHMARK By Kingspan KarrierRail™
- 3 Subgirt
- 4 Thin Brick Holding Tray
- 5 Thin Brick
- 6 Thin Brick Mortar

## Toggle Bolt Anchor, 1/2-13, PK100

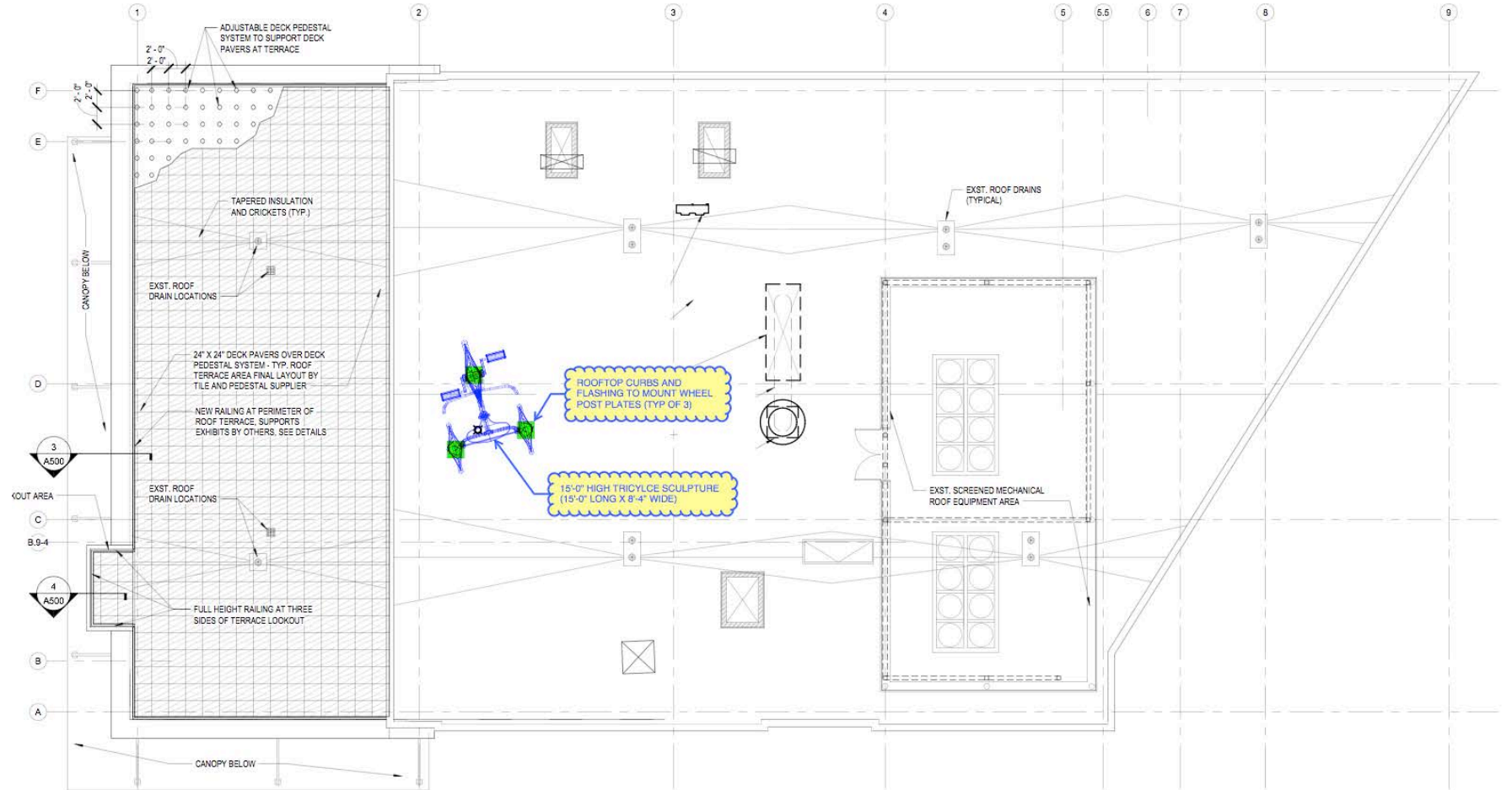
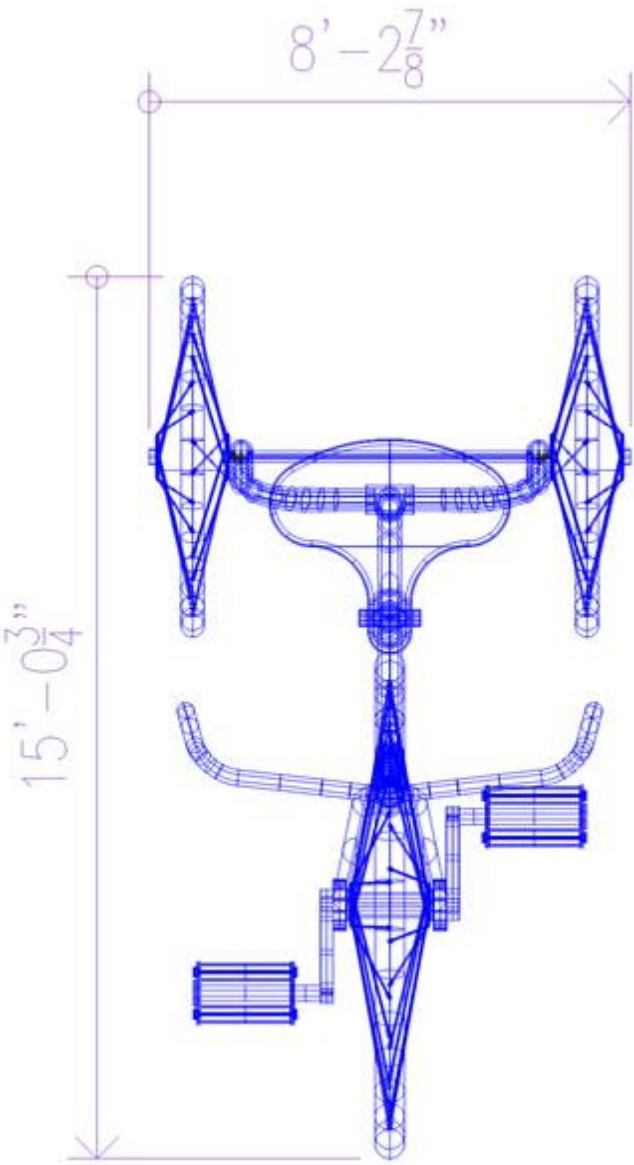
FABORY | Zoro #: G5217685 | Mfr #: 40P480

No Reviews | Write the First Review

Rated







1 ROOF PLAN  
A105 1/8" = 1'-0"



## Design Committee - Erie Canal Harbor Development Corporation

January 14, 2019

Mr. Steven Ranalli, P.E. President  
Erie Canal Harbor Development Corporation  
95 Perry Street  
Buffalo, NY 14203

Design Review Committee

### **Signage Package Explore and More Children's Museum**

Dear Steve,

The Design Committee has reviewed the Signage Package for the Explore and More Children's Museum.

#### **Comments:**

We appreciate the effort taken by Explore and More to develop a concise and cohesive Signage Package. The presentation shown to us on December 7th, 2018 with the following adjustments shown on the PDF dated December 20, 2018, has been accepted by the ECHDC Design Committee;

1. The rhythm of the text on the East Elevation mimics the text on the West Elevation.
2. The elimination of the 3M Brick wrap on the lintels behind the logo signage.
3. Flat cut aluminum cafe- lettering as shown on enclosed PDF.

As stated in the Design Standards; the first level canopies are integral to the Active Ground Floor and Streetscape use (see 2.1, and 4.1 Canal side Design guidelines). The Design Committee has suggested that a color (other than gray) be introduced at this level. This color would help identify the Children's Museum among the other Mercantile Style Buildings.

Sincerely,

Mark Mistretta

Audrey Ross Sanders

Rishawn Sonubi



BYRON W. BROWN  
Mayor

**CITY OF BUFFALO**  
**OFFICE OF STRATEGIC PLANNING**



BRENDAN MEHAFFY, ESQ.  
Executive Director

January 22, 2019

Steven P. Ranalli, P.E.  
Empire State Development  
Vice President – Development, Western New York  
Erie Canal Harbor Development Corporation  
95 Perry Street, Suite 500  
Buffalo NY 14203

Dear Mr. Ranalli:

The Unified Development Ordinance (UDO) clarifies the responsibility for reviewing signage and vests it solely with the Department of Permit and Inspection Services. If a sign does not meet the standards established within the UDO, a referral to the Zoning Board of Appeals may occur.

The City of Buffalo Planning Board Site Plan Review does not include signage proposals or packages.

Therefore, for signage proposals within the area where the Erie Canal Harbor Development Corporation has a zoning override adherence to the UDO is not required, nor is review by and City regulatory board.

Please contact me at 7(716)851-5029 if you have any questions.

Regards,

A handwritten signature in cursive script that reads "Nadine Marrero".

Nadine Marrero, AICP  
Director of Planning