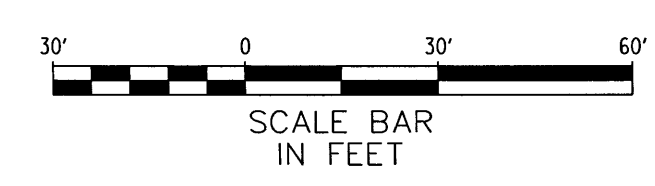
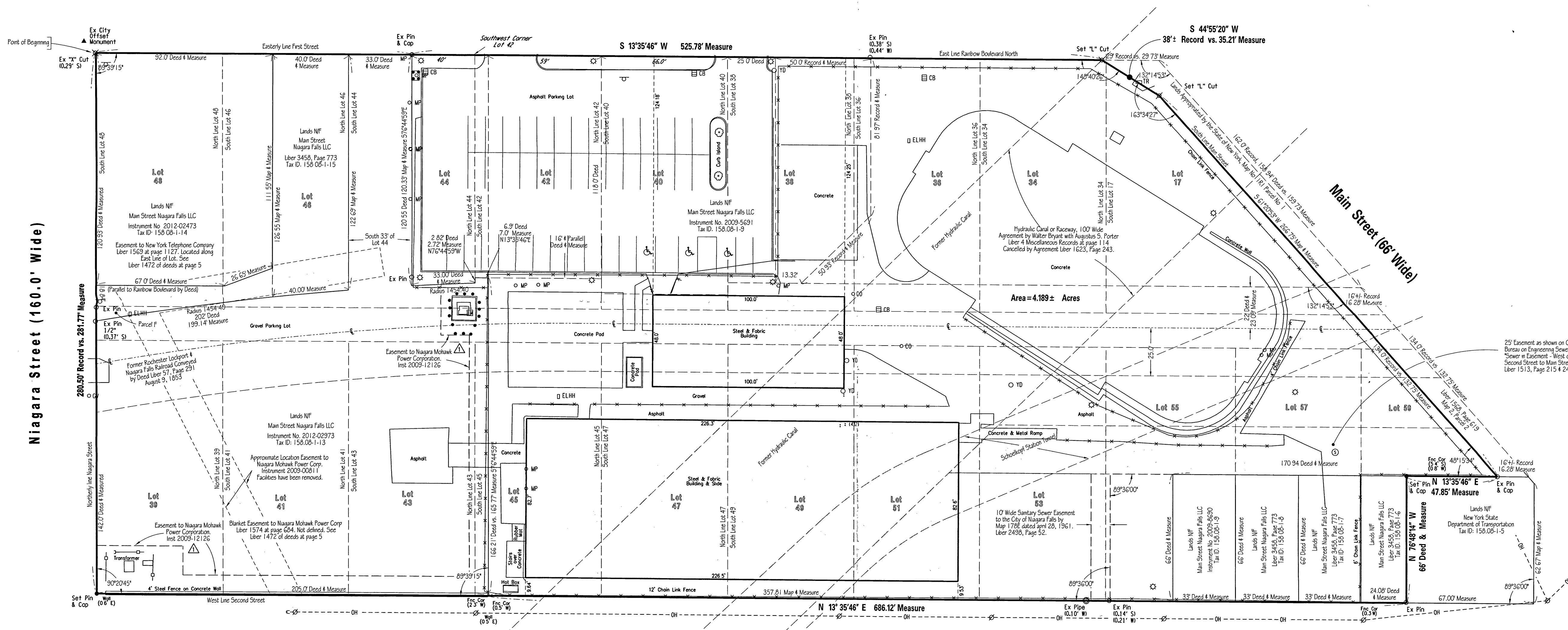


Legend

Abbreviations	Symbols	Line Styles
Ex = Existing	○	--- SA --- Sanitary Sewer
E = East	○	--- ST --- Storm Sewer
N = North	○	--- W --- Water Line
W = West	○	--- G --- Gas Line
S = South	○	--- T --- Telephone Wires or Cables
R.O.W. = Right of Way	○	--- E --- Electric Wires or Cables
A.K.A. = also known as	○	--- C --- Cable TV
EM Electric Motor	⊕	--- R --- Electric Riser
ELHH Electric Hand Hole	⊕	--- P --- Power Pole
ELHH Electric Hand Hole	⊕	--- GWA --- Guy Wire Anchor
Deciduous Tree	⊕	--- TR --- Telephone Riser
Bush	⊕	--- FH --- Fire Hydrant
Coniferous Tree	⊕	--- WSV --- Water Service Valve
Electric Manhole	⊕	--- GLM --- Gas Line Marker
	⊕	--- GV --- Gas Valve
	⊕	--- GSV --- Gas Service Valve
	⊕	--- S --- Sign
	⊕	--- MB --- Metal Post
	⊕	--- C --- Concrete R.O.W. Monument
	⊕	--- L --- Light Standard
	⊕	--- TM --- Telephone Manhole
	⊕	--- B --- Balcony
	⊕	--- ICV --- Irrigation Control Valve
	⊕	--- --- SA --- Sanitary Sewer
	⊕	--- --- ST --- Storm Sewer
	⊕	--- --- W --- Water Line
	⊕	--- --- G --- Gas Line
	⊕	--- --- T --- Telephone Wires or Cables
	⊕	--- --- E --- Electric Wires or Cables
	⊕	--- --- C --- Cable TV
	⊕	--- --- R --- Electric Riser
	⊕	--- --- P --- Power Pole
	⊕	--- --- GWA --- Guy Wire Anchor
	⊕	--- --- TR --- Telephone Riser
	⊕	--- --- FH --- Fire Hydrant
	⊕	--- --- WSV --- Water Service Valve
	⊕	--- --- GLM --- Gas Line Marker
	⊕	--- --- GV --- Gas Valve
	⊕	--- --- GSV --- Gas Service Valve
	⊕	--- --- S --- Sign
	⊕	--- --- MB --- Metal Post
	⊕	--- --- C --- Concrete R.O.W. Monument
	⊕	--- --- L --- Light Standard
	⊕	--- --- TM --- Telephone Manhole
	⊕	--- --- B --- Balcony
	⊕	--- --- ICV --- Irrigation Control Valve
	⊕	--- --- --- SA --- Sanitary Sewer
	⊕	--- --- --- ST --- Storm Sewer
	⊕	--- --- --- W --- Water Line
	⊕	--- --- --- G --- Gas Line
	⊕	--- --- --- T --- Telephone Wires or Cables
	⊕	--- --- --- E --- Electric Wires or Cables
	⊕	--- --- --- C --- Cable TV
	⊕	--- --- --- R --- Electric Riser
	⊕	--- --- --- P --- Power Pole
	⊕	--- --- --- GWA --- Guy Wire Anchor
	⊕	--- --- --- TR --- Telephone Riser
	⊕	--- --- --- FH --- Fire Hydrant
	⊕	--- --- --- WSV --- Water Service Valve
	⊕	--- --- --- GLM --- Gas Line Marker
	⊕	--- --- --- GV --- Gas Valve
	⊕	--- --- --- GSV --- Gas Service Valve
	⊕	--- --- --- S --- Sign
	⊕	--- --- --- MB --- Metal Post
	⊕	--- --- --- C --- Concrete R.O.W. Monument
	⊕	--- --- --- L --- Light Standard
	⊕	--- --- --- TM --- Telephone Manhole
	⊕	--- --- --- B --- Balcony
	⊕	--- --- --- ICV --- Irrigation Control Valve
	⊕	--- --- --- --- SA --- Sanitary Sewer
	⊕	--- --- --- --- ST --- Storm Sewer
	⊕	--- --- --- --- W --- Water Line
	⊕	--- --- --- --- G --- Gas Line
	⊕	--- --- --- --- T --- Telephone Wires or Cables
	⊕	--- --- --- --- E --- Electric Wires or Cables
	⊕	--- --- --- --- C --- Cable TV
	⊕	--- --- --- --- R --- Electric Riser
	⊕	--- --- --- --- P --- Power Pole
	⊕	--- --- --- --- GWA --- Guy Wire Anchor
	⊕	--- --- --- --- TR --- Telephone Riser
	⊕	--- --- --- --- FH --- Fire Hydrant
	⊕	--- --- --- --- WSV --- Water Service Valve
	⊕	--- --- --- --- GLM --- Gas Line Marker
	⊕	--- --- --- --- GV --- Gas Valve
	⊕	--- --- --- --- GSV --- Gas Service Valve
	⊕	--- --- --- --- S --- Sign
	⊕	--- --- --- --- MB --- Metal Post
	⊕	--- --- --- --- C --- Concrete R.O.W. Monument
	⊕	--- --- --- --- L --- Light Standard
	⊕	--- --- --- --- TM --- Telephone Manhole
	⊕	--- --- --- --- B --- Balcony
	⊕	--- --- --- --- ICV --- Irrigation Control Valve

Rainbow Boulevard North (66' Wide)
(Formerly First Street)



Niagara Boundary
And Mapping Services

761 Cayuga Street
Niagara Falls, NY 14092
716.291.9384
Fax 716.291.9586
E-Mail: RL@NBSMGS.COM

UNAUTHORIZED ALTERATION OF THIS SURVEY MAP IS A VIOLATION OF SECTION 1700, PROVISION 2 OF THE NEW YORK STATE EDUCATION LAW.

THIS SURVEY WAS PREPARED WITHOUT THE BENEFIT OF AN ABSTRACT OF TITLE AND IS SUBJECT TO ANY STATE OF FACTS THAT MAY BE REVEALED BY AN EXAMINATION OF SUCH.

Map Showing Boundary Survey of Lands Owned by

Main Street Niagara Falls LLC

LOT	SECTION	TOWNSHIP	RANGE
41			
Mile Reserve			
CITY	Niagara Falls		
COUNTY	Niagara		
STATE	New York		
DATE	July 30, 2018		
SCALE	1" = 30'		
JOB NO.	7044-18		
RESURVEYED			
Field Inspection Add Easement	3-14-19		
Remove Sign as removed from site	3-20-19		

ONLY COPIES FROM THE ORIGINAL OF THIS SURVEY MARKED WITH AN ORIGINAL OF THE LAND SURVEYOR'S UNLICENSED SEAL, SHALL BE CONSIDERED TO BE VALID AND CORRECT.

THIS SURVEY WAS PREPARED FOR THE PARTIES AND PURPOSES INDICATED HEREON. ANY EXTENSION OF THE USE BEYOND THE PARTIES OR PURPOSES INDICATED IS EXPRESSLY FORBIDDEN WITHOUT WRITTEN RELEASE OR PERMISSION OF THE UNDERSIGNED.

Kenneth L. Slaughterhouse† Lic. No. 50349

This survey has been prepared based on information contained in Title Report by Stewart Title Insurance Company, Title No. 7109744 Dated 9/14/18.

USA Niagara Development Corporation.
Stewart Title Insurance Company.
Hodgson Russ LLP.

Certifications on this Boundary Map signify that the map was prepared in accordance with the current existing Code of Practice for Land Surveys adopted by the New York State Association of Professional Surveyors, Inc. The certification is limited to the persons for whom the Boundary Survey map is prepared, to the Title Company, to the governmental agency and to the lending institution listed on this Boundary Survey Map.

Maps Referenced

Map by J.P. Holmes Surveyor 1861, Filed in the Niagara County Clerk's Office December 20, 1861 Under Cover No. 391

Map by James M. McIntyre Licensed Land Surveyor, August 30, 2001

Map by TVCA Consultants, Douglas Raymond Roger, Licensed Land Surveyor, January 5, 2009, Filed in the Niagara County Clerk's Office in Book 63 of Microfilmed Maps at Page 6319 & 6320 Side No. 462A