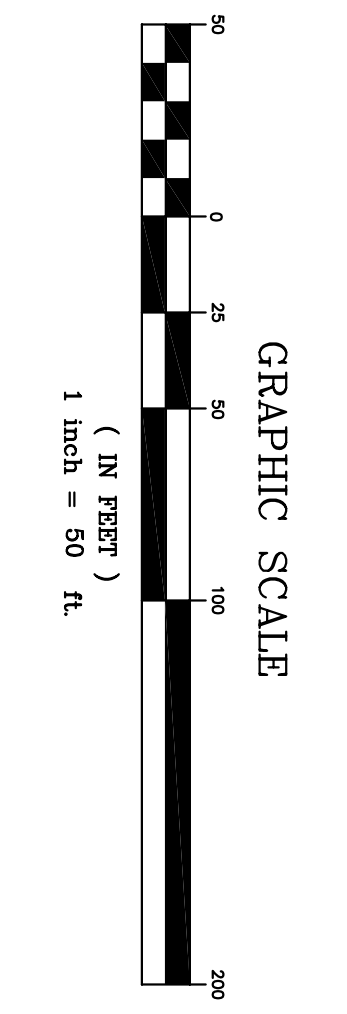


TAX PARCEL: 76-50-1-14  
 L1 S81°00'07"E 35.63'  
 L2 S27°24'11"E 11.30'  
 L4 N01°47'37"E 41.61'  
 TAX PARCEL: 76-50-1-25  
 L5 S01°31'21"W 100.51'  
 L6 N80°18'18"E 28.28'  
 L7 N01°28'16"E 100.48'  
 TAX PARCEL: 76-42-5-26  
 L8 S00°57'02"W 42.90'  
 L9 S01°39'58"W 32.95'  
 L11 N85°39'18"W 28.33'  
 L12 N01°31'21"E 9.05'  
 L13 N01°02'47"E 15.00'  
 L15 S80°18'18"E 28.28'  
 L16 N01°31'21"E 100.51'  
 TAX PARCEL: 76-50-1-18  
 L17 N80°24'57"W 68.75'  
 L18 S04°50'07"E 21.25'  
 L20 N05°01'03"E 4.50'  
 L21 S81°36'51"E 38.74'  
 TAX PARCEL: 76-50-1-11  
 L22 N08°16'26"E 24.92'  
 L23 S79°55'09"E 45.71'

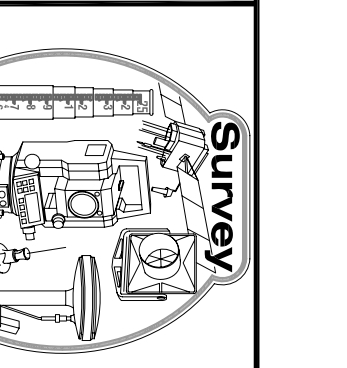
- NOTES:
1. BASE MAPPING PREPARED BY COLON HARBOR AND ASSOCIATES, L.P. FROM AN OCTOBER 2007 THROUGH JANUARY 2008 FIELD SURVEY.
  2. NORTH ORIENTATION SHOWN IS TRUE NORTH BASED ON GPS OBSERVATIONS TAKEN AT THE TIME OF THE FIELD SURVEY.
  3. ELEVATIONS SHOWN BASED ON NAD83 VERTICAL DATUM. HORIZONTAL LOCATION BASE ON NEW YORK STATE PLANE COORDINATE SYSTEM EAST ZONE 18D.
  4. SUBJECT TO ANY STATEMENT OF FACT AN UP-TO-DATE ABSTRACT OF TITLE WOULD DISCLOSE.
  5. SUBJECT TO ALL RIGHTS, EASEMENTS, COVENANTS OR RESTRICTIONS OF RECORD.
  6. UNDERGROUND UTILITIES, STRUCTURES AND FACILITIES HAVE BEEN SHOWN FROM RECORD PLANS, SURFACE LOCATIONS AND MEASUREMENTS OBTAINED FROM A FIELD SURVEY. THEREFORE THEIR LOCATIONS MUST BE CONSIDERED APPROXIMATE ONLY. THEIR DEPTHS AND OTHER UTILITIES WHICH ARE NOT KNOWN IN SIZE, TYPE AND LOCATION OF ALL UTILITIES AND STRUCTURES MUST BE VERIFIED BY PROPER MEANS.
  7. DUE TO SHOW COVERED CONDITIONS AT THE TIME OF THE FIELD SURVEY, CERTAIN PLANNING AND TOPOGRAPHIC FEATURES MAY EXIST AND MAY NOT BE SHOWN.
  8. PERMANENT EASEMENT FOR HIGHWAY PURPOSES RESERVED TO THE PEOPLE OF THE STATE OF NEW YORK, SHOWN BASED ON MAP REFERENCES 1-3.

- LEGEND
- CITY STREET OR HIGHWAY BOUNDARY
  - FORMER LOT LINE
  - EASEMENT LINE
  - IRON ROD FOUND
  - P.K. NAIL FOUND



Revision	Change	Date
1	ADDITION AND REVISIONS TO TABLE OF OWNERS	4/7/10
2	ADDITION AND REVISIONS TO TABLE OF OWNERS	11/13/09
3	ADDITION AND REVISIONS TO TABLE OF OWNERS	04/03/09

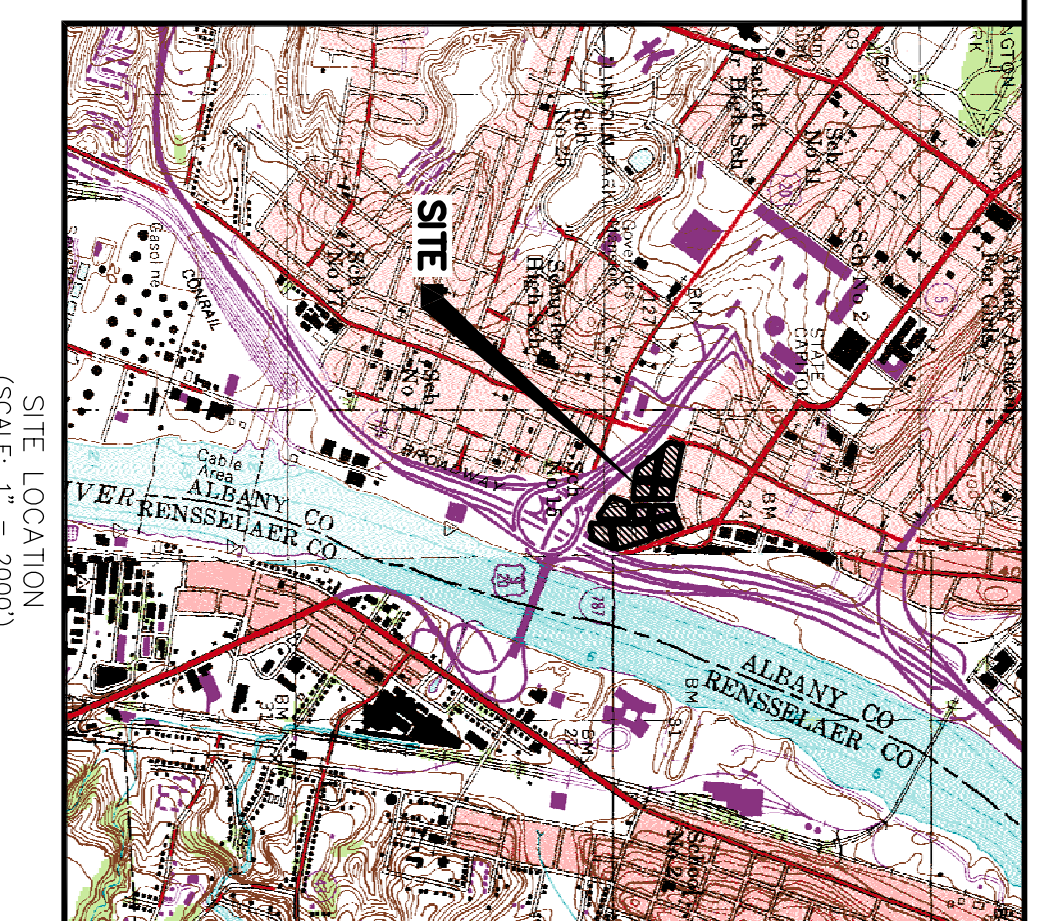
Prepared by: CHA  
 Date: 04/03/09



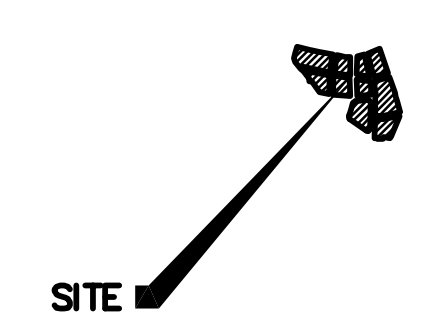
Boundary Survey of lands for the proposed Albany Convention Center, State of New York, Albany County of Albany

- MAP REFERENCES:
1. MAP ENTITLED "MAP OF LANDS OF PARCEL '1'-4" - BEAR, TOWER ASSOCIATES, LIMITED PARTNERSHIP, PARCEL '1'-4" - DIVISION TOWER ASSOCIATES LIMITED PARTNERSHIP, PARCEL '1'-4" - DIVISION OPERATING COMPANY LIMITED PARTNERSHIP, AS PREPARED BY SMITH & WARDNER, P.C. AND DATED JUNE 6, 1989.
  2. MAP ENTITLED "NEW YORK STATE OFFICE OF GENERAL SERVICES - MAP SHOWING SURVEY OF A PORTION OF STATE LANDS LOCATED AT THE SOUTH HALL PROPERTY (NELSON A. ROCKEFELLER BUREAU STATE PLAZA)", AS PREPARED BY SMITH & WARDNER, P.C. AND DATED JULY 27, 1988.
  3. MAP ENTITLED "BOUNDARY SURVEY OF LANDS FOR SHOREFRONT DEVELOPMENT CO.", AS PREPARED BY SMITH & WARDNER, P.C. AND DATED FEBRUARY 11, 1989.
  4. MAP ENTITLED "SURVEY OF LANDS KNOWN AS PARCEL '1'-4" - BEAR, TOWER ASSOCIATES, LIMITED PARTNERSHIP, PARCEL '1'-4" - DIVISION TOWER ASSOCIATES LIMITED PARTNERSHIP, PARCEL '1'-4" - DIVISION OPERATING COMPANY LIMITED PARTNERSHIP, AS PREPARED BY SMITH & WARDNER, P.C. AND DATED OCTOBER 27, 1989.
  5. MAP ENTITLED "BOUNDARY AND TOPOGRAPHIC SURVEY OF LANDS FOR DIVISION TOWER ASSOCIATES LOCATED AT HUDSON AVENUE, GREEN MARCH 1, 1989 AND LAST REVISED 10/19/98
  6. MAP ENTITLED "SURVEY OF LANDS KNOWN AS PARCEL '1'-4" - BEAR, TOWER ASSOCIATES, LIMITED PARTNERSHIP, PARCEL '1'-4" - DIVISION TOWER ASSOCIATES LIMITED PARTNERSHIP, PARCEL '1'-4" - DIVISION OPERATING COMPANY LIMITED PARTNERSHIP, AS PREPARED BY SMITH & WARDNER, P.C. DATED OCTOBER 27, 1989 AND LAST REVISED 10/06/93.
  7. MAP ENTITLED "BOUNDARY & TOPOGRAPHIC SURVEY OF LAND OWNED BY LEWIS GOTTLIEB & NATE LASHOW, LIBR 283, PAGE 741 LOCATED AT HUDSON AVENUE, GREEN MARCH 1, 1989 AND LAST REVISED 10/19/98
  8. MAP ENTITLED "RECORD SURVEY PARKING GARAGE NO. 2 ALBANY PARKING AUTHORITY, HUDSON AVENUE, CITY OF ALBANY, COUNTY OF ALBANY, STATE OF NEW YORK", AS PREPARED BY SMITH & WARDNER, P.C. DATED OCTOBER 14, 1991.
  9. MAP ENTITLED "SURVEY OF LANDS KNOWN AS PARCEL 'A' - BEAR, TOWER ASSOCIATES, LIMITED PARTNERSHIP, PARCEL 'A' - BEAR, TOWER ASSOCIATES LIMITED PARTNERSHIP, PARCEL 'A' - BEAR, TOWER ASSOCIATES LIMITED PARTNERSHIP, AS PREPARED BY SMITH & WARDNER, P.C. AND DATED OCTOBER 28, 1989.

TAX MAP PARCEL	OWNER	DEED BOOK/PAGE	AGES
76-42-1-23	THE COUNTY OF ALBANY, NEW YORK	263,514/8	03.24
76-42-1-4	ALBANY PARKING AUTHORITY	289,787/27	03.84
76-42-1-5	ALBANY PARKING AUTHORITY	289,787/27	03.84
76-42-1-6	412 BROOKLYN REALTY, LLC	265,500/2	03.24
76-42-1-7	FRANK TOWER ASSOCIATES LIMITED PARTNERSHIP	248,816/0	03.84
76-42-1-8	FRANK TOWER ASSOCIATES LIMITED PARTNERSHIP	248,816/0	03.84
76-42-1-9	FRANK TOWER ASSOCIATES LIMITED PARTNERSHIP	248,816/0	03.84
76-42-1-10	FRANK TOWER ASSOCIATES LIMITED PARTNERSHIP	248,816/0	03.84
76-42-1-11	FRANK TOWER ASSOCIATES LIMITED PARTNERSHIP	248,816/0	03.84
76-42-1-12	FRANK TOWER ASSOCIATES LIMITED PARTNERSHIP	248,816/0	03.84
76-42-1-13	FRANK TOWER ASSOCIATES LIMITED PARTNERSHIP	248,816/0	03.84
76-42-1-14	FRANK TOWER ASSOCIATES LIMITED PARTNERSHIP	248,816/0	03.84
76-42-1-15	FRANK TOWER ASSOCIATES LIMITED PARTNERSHIP	248,816/0	03.84
76-42-1-16	FRANK TOWER ASSOCIATES LIMITED PARTNERSHIP	248,816/0	03.84
76-42-1-17	FRANK TOWER ASSOCIATES LIMITED PARTNERSHIP	248,816/0	03.84
76-42-1-18	FRANK TOWER ASSOCIATES LIMITED PARTNERSHIP	248,816/0	03.84
76-42-1-19	FRANK TOWER ASSOCIATES LIMITED PARTNERSHIP	248,816/0	03.84
76-42-1-20	FRANK TOWER ASSOCIATES LIMITED PARTNERSHIP	248,816/0	03.84
76-42-1-21	FRANK TOWER ASSOCIATES LIMITED PARTNERSHIP	248,816/0	03.84
76-42-1-22	FRANK TOWER ASSOCIATES LIMITED PARTNERSHIP	248,816/0	03.84
76-42-1-23	FRANK TOWER ASSOCIATES LIMITED PARTNERSHIP	248,816/0	03.84
76-42-1-24	FRANK TOWER ASSOCIATES LIMITED PARTNERSHIP	248,816/0	03.84
76-42-1-25	FRANK TOWER ASSOCIATES LIMITED PARTNERSHIP	248,816/0	03.84
76-42-1-26	FRANK TOWER ASSOCIATES LIMITED PARTNERSHIP	248,816/0	03.84
76-42-1-27	FRANK TOWER ASSOCIATES LIMITED PARTNERSHIP	248,816/0	03.84
76-42-1-28	FRANK TOWER ASSOCIATES LIMITED PARTNERSHIP	248,816/0	03.84
76-42-1-29	FRANK TOWER ASSOCIATES LIMITED PARTNERSHIP	248,816/0	03.84
76-42-1-30	FRANK TOWER ASSOCIATES LIMITED PARTNERSHIP	248,816/0	03.84
76-42-1-31	FRANK TOWER ASSOCIATES LIMITED PARTNERSHIP	248,816/0	03.84
76-42-1-32	FRANK TOWER ASSOCIATES LIMITED PARTNERSHIP	248,816/0	03.84
76-42-1-33	FRANK TOWER ASSOCIATES LIMITED PARTNERSHIP	248,816/0	03.84
76-42-1-34	FRANK TOWER ASSOCIATES LIMITED PARTNERSHIP	248,816/0	03.84
76-42-1-35	FRANK TOWER ASSOCIATES LIMITED PARTNERSHIP	248,816/0	03.84
76-42-1-36	FRANK TOWER ASSOCIATES LIMITED PARTNERSHIP	248,816/0	03.84
76-42-1-37	FRANK TOWER ASSOCIATES LIMITED PARTNERSHIP	248,816/0	03.84
76-42-1-38	FRANK TOWER ASSOCIATES LIMITED PARTNERSHIP	248,816/0	03.84
76-42-1-39	FRANK TOWER ASSOCIATES LIMITED PARTNERSHIP	248,816/0	03.84
76-42-1-40	FRANK TOWER ASSOCIATES LIMITED PARTNERSHIP	248,816/0	03.84
76-42-1-41	FRANK TOWER ASSOCIATES LIMITED PARTNERSHIP	248,816/0	03.84
76-42-1-42	FRANK TOWER ASSOCIATES LIMITED PARTNERSHIP	248,816/0	03.84
76-42-1-43	FRANK TOWER ASSOCIATES LIMITED PARTNERSHIP	248,816/0	03.84
76-42-1-44	FRANK TOWER ASSOCIATES LIMITED PARTNERSHIP	248,816/0	03.84
76-42-1-45	FRANK TOWER ASSOCIATES LIMITED PARTNERSHIP	248,816/0	03.84
76-42-1-46	FRANK TOWER ASSOCIATES LIMITED PARTNERSHIP	248,816/0	03.84
76-42-1-47	FRANK TOWER ASSOCIATES LIMITED PARTNERSHIP	248,816/0	03.84
76-42-1-48	FRANK TOWER ASSOCIATES LIMITED PARTNERSHIP	248,816/0	03.84
76-42-1-49	FRANK TOWER ASSOCIATES LIMITED PARTNERSHIP	248,816/0	03.84
76-42-1-50	FRANK TOWER ASSOCIATES LIMITED PARTNERSHIP	248,816/0	03.84
76-42-1-51	FRANK TOWER ASSOCIATES LIMITED PARTNERSHIP	248,816/0	03.84
76-42-1-52	FRANK TOWER ASSOCIATES LIMITED PARTNERSHIP	248,816/0	03.84
76-42-1-53	FRANK TOWER ASSOCIATES LIMITED PARTNERSHIP	248,816/0	03.84
76-42-1-54	FRANK TOWER ASSOCIATES LIMITED PARTNERSHIP	248,816/0	03.84
76-42-1-55	FRANK TOWER ASSOCIATES LIMITED PARTNERSHIP	248,816/0	03.84
76-42-1-56	FRANK TOWER ASSOCIATES LIMITED PARTNERSHIP	248,816/0	03.84
76-42-1-57	FRANK TOWER ASSOCIATES LIMITED PARTNERSHIP	248,816/0	03.84
76-42-1-58	FRANK TOWER ASSOCIATES LIMITED PARTNERSHIP	248,816/0	03.84
76-42-1-59	FRANK TOWER ASSOCIATES LIMITED PARTNERSHIP	248,816/0	03.84
76-42-1-60	FRANK TOWER ASSOCIATES LIMITED PARTNERSHIP	248,816/0	03.84
76-42-1-61	FRANK TOWER ASSOCIATES LIMITED PARTNERSHIP	248,816/0	03.84
76-42-1-62	FRANK TOWER ASSOCIATES LIMITED PARTNERSHIP	248,816/0	03.84
76-42-1-63	FRANK TOWER ASSOCIATES LIMITED PARTNERSHIP	248,816/0	03.84
76-42-1-64	FRANK TOWER ASSOCIATES LIMITED PARTNERSHIP	248,816/0	03.84
76-42-1-65	FRANK TOWER ASSOCIATES LIMITED PARTNERSHIP	248,816/0	03.84
76-42-1-66	FRANK TOWER ASSOCIATES LIMITED PARTNERSHIP	248,816/0	03.84
76-42-1-67	FRANK TOWER ASSOCIATES LIMITED PARTNERSHIP	248,816/0	03.84
76-42-1-68	FRANK TOWER ASSOCIATES LIMITED PARTNERSHIP	248,816/0	03.84
76-42-1-69	FRANK TOWER ASSOCIATES LIMITED PARTNERSHIP	248,816/0	03.84
76-42-1-70	FRANK TOWER ASSOCIATES LIMITED PARTNERSHIP	248,816/0	03.84
76-42-1-71	FRANK TOWER ASSOCIATES LIMITED PARTNERSHIP	248,816/0	03.84
76-42-1-72	FRANK TOWER ASSOCIATES LIMITED PARTNERSHIP	248,816/0	03.84
76-42-1-73	FRANK TOWER ASSOCIATES LIMITED PARTNERSHIP	248,816/0	03.84
76-42-1-74	FRANK TOWER ASSOCIATES LIMITED PARTNERSHIP	248,816/0	03.84
76-42-1-75	FRANK TOWER ASSOCIATES LIMITED PARTNERSHIP	248,816/0	03.84
76-42-1-76	FRANK TOWER ASSOCIATES LIMITED PARTNERSHIP	248,816/0	03.84
76-42-1-77	FRANK TOWER ASSOCIATES LIMITED PARTNERSHIP	248,816/0	03.84
76-42-1-78	FRANK TOWER ASSOCIATES LIMITED PARTNERSHIP	248,816/0	03.84
76-42-1-79	FRANK TOWER ASSOCIATES LIMITED PARTNERSHIP	248,816/0	03.84
76-42-1-80	FRANK TOWER ASSOCIATES LIMITED PARTNERSHIP	248,816/0	03.84
76-42-1-81	FRANK TOWER ASSOCIATES LIMITED PARTNERSHIP	248,816/0	03.84
76-42-1-82	FRANK TOWER ASSOCIATES LIMITED PARTNERSHIP	248,816/0	03.84
76-42-1-83	FRANK TOWER ASSOCIATES LIMITED PARTNERSHIP	248,816/0	03.84
76-42-1-84	FRANK TOWER ASSOCIATES LIMITED PARTNERSHIP	248,816/0	03.84
76-42-1-85	FRANK TOWER ASSOCIATES LIMITED PARTNERSHIP	248,816/0	03.84
76-42-1-86	FRANK TOWER ASSOCIATES LIMITED PARTNERSHIP	248,816/0	03.84
76-42-1-87	FRANK TOWER ASSOCIATES LIMITED PARTNERSHIP	248,816/0	03.84
76-42-1-88	FRANK TOWER ASSOCIATES LIMITED PARTNERSHIP	248,816/0	03.84
76-42-1-89	FRANK TOWER ASSOCIATES LIMITED PARTNERSHIP	248,816/0	03.84
76-42-1-90	FRANK TOWER ASSOCIATES LIMITED PARTNERSHIP	248,816/0	03.84
76-42-1-91	FRANK TOWER ASSOCIATES LIMITED PARTNERSHIP	248,816/0	03.84
76-42-1-92	FRANK TOWER ASSOCIATES LIMITED PARTNERSHIP	248,816/0	03.84
76-42-1-93	FRANK TOWER ASSOCIATES LIMITED PARTNERSHIP	248,816/0	03.84
76-42-1-94	FRANK TOWER ASSOCIATES LIMITED PARTNERSHIP	248,816/0	03.84
76-42-1-95	FRANK TOWER ASSOCIATES LIMITED PARTNERSHIP	248,816/0	03.84
76-42-1-96	FRANK TOWER ASSOCIATES LIMITED PARTNERSHIP	248,816/0	03.84
76-42-1-97	FRANK TOWER ASSOCIATES LIMITED PARTNERSHIP	248,816/0	03.84
76-42-1-98	FRANK TOWER ASSOCIATES LIMITED PARTNERSHIP	248,816/0	03.84
76-42-1-99	FRANK TOWER ASSOCIATES LIMITED PARTNERSHIP	248,816/0	03.84
76-42-1-100	FRANK TOWER ASSOCIATES LIMITED PARTNERSHIP	248,816/0	03.84







SITE LOCATION  
(SCALE: 1" = 2000')

MAP REFERENCES:

1. MAP ENTITLED "MAP OF LANDS OF PARCEL 'A' - PEARL TOWER ASSOCIATES LIMITED PARTNERSHIP, PARCEL 'B' - DIVISION TOWER ASSOCIATES LIMITED PARTNERSHIP, PARCEL 'C' - DIVISION OPERATING COMPANY LIMITED PARTNERSHIP", AS PREPARED BY SMITH & MAHONEY, P.C. AND DATED JUNE 6, 1989.
2. MAP ENTITLED "NEW YORK STATE OFFICE OF GENERAL SERVICES - MAP SHOWING SURVEY OF A PORTION OF STATE LANDS LOCATED AT THE SOUTH MALL PROPERTY (NELSON A. ROCKEFELLER EMPIRE STATE PLAZA)", AS PREPARED BY SMITH & MAHONEY, P.C. AND DATED JULY 27, 1989.
3. MAP ENTITLED "BOUNDARY SURVEY OF LANDS FOR SHOREGATE DEVELOPMENT CO.", AS PREPARED BY SMITH & MAHONEY, P.C., AND DATED FEBRUARY 11, 1989.
4. MAP ENTITLED "SURVEY OF LANDS KNOWN AS PARCEL 'C' DIVISION OPERATING COMPANY LIMITED PARTNERSHIP LOCATED AT DIVISION STREET, CITY OF ALBANY, COUNTY OF ALBANY, STATE OF NEW YORK", AS PREPARED BY SMITH & MAHONEY, P.C. AND DATED OCTOBER 27, 1989.
5. MAP ENTITLED "BOUNDARY AND TOPOGRAPHIC SURVEY OF LANDS FOR DIVISION TOWER ASSOCIATES LOCATED AT HUDSON AVENUE, GREEN STREET & DIVISION STREET, CITY OF ALBANY, COUNTY OF ALBANY, STATE OF NEW YORK", AS PREPARED BY SMITH & MAHONEY, P.C. DATED MARCH 1, 1989 AND LAST REVISED 10/19/89.
6. MAP ENTITLED "SURVEY OF LANDS KNOWN AS PARCEL 'B' DIVISION TOWER LIMITED PARTNERSHIP LOCATED AT GREEN STREET, HUDSON AVENUE & DIVISION STREET, CITY OF ALBANY, COUNTY OF ALBANY, STATE OF NEW YORK", AS PREPARED BY SMITH & MAHONEY, P.C. DATED OCTOBER 27, 1989 AND LAST REVISED 10/06/93.
7. MAP ENTITLED "BOUNDARY & TOPOGRAPHIC SURVEY OF LAND OWNED BY LEWIS GOTTLIEB & NATE LACHOW, LIBER 2283, PAGE 741 LOCATED AT HUDSON AVENUE, GREEN STREET & DIVISION STREET, CITY OF ALBANY, COUNTY OF ALBANY, STATE OF NEW YORK", AS PREPARED BY SMITH & MAHONEY, P.C. DATED OCTOBER 27, 1989 AND LAST REVISED 10/06/93.
8. MAP ENTITLED "RECORD SURVEY PARKING GARAGE NO. 2 ALBANY PARKING AUTHORITY, HUDSON AVENUE, CITY OF ALBANY, COUNTY OF ALBANY, STATE OF NEW YORK", AS PREPARED BY SMITH & MAHONEY, P.C. DATED OCTOBER 14, 1991.
9. MAP ENTITLED "SURVEY OF LANDS KNOWN AS PARCEL 'A' PEARL TOWER LIMITED PARTNERSHIP LOCATED AT S. PEARL STREET, HUDSON AVENUE & DIVISION ST., CITY OF ALBANY, COUNTY OF ALBANY, STATE OF NEW YORK", AS PREPARED BY SMITH & MAHONEY, P.C. AND DATED OCTOBER 28, 1989.

(SEE NOTE NO. 2)

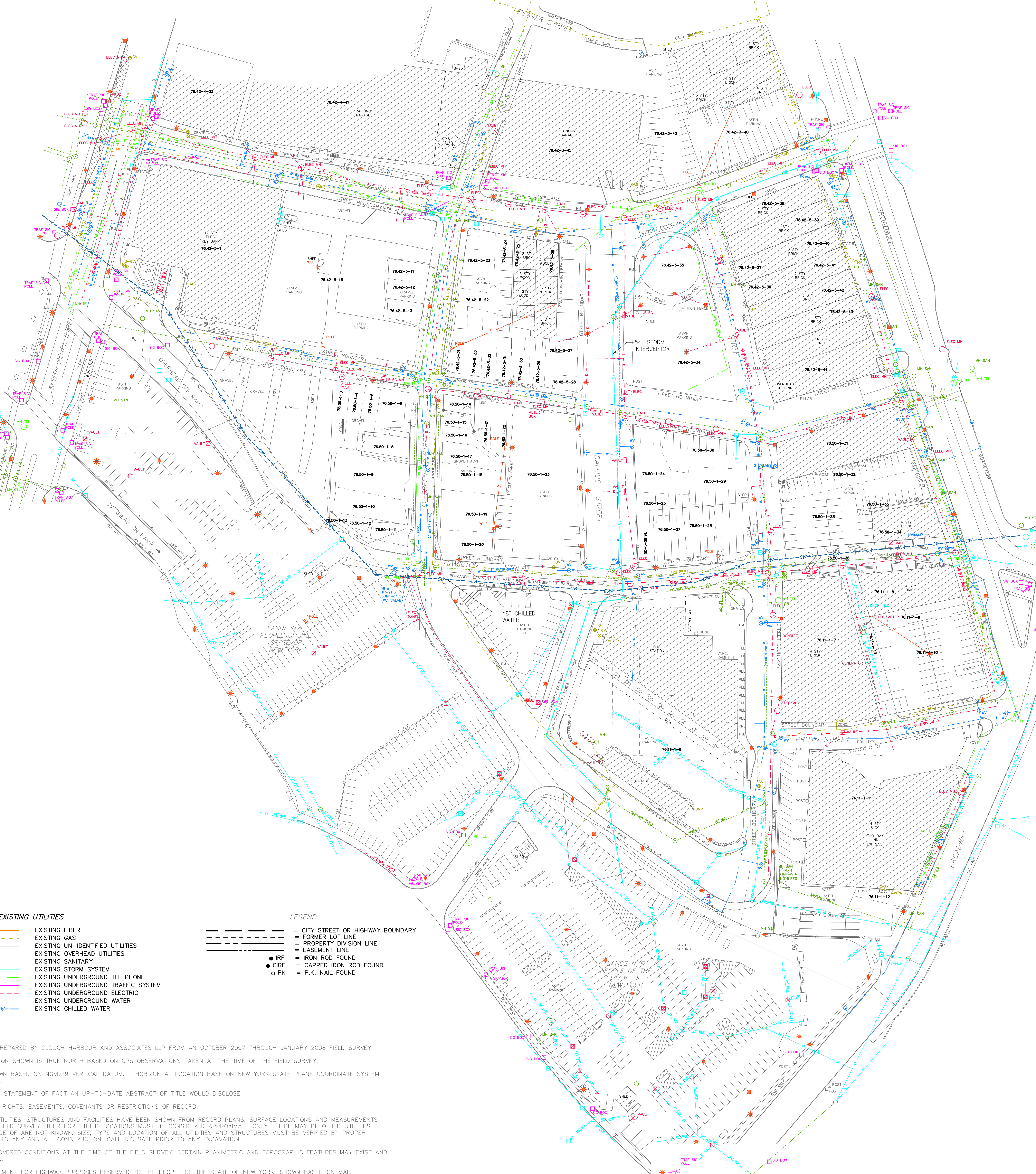


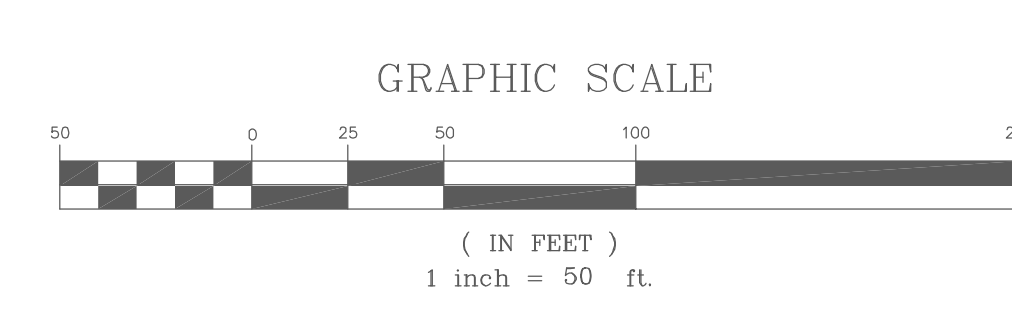
TABLE OF OWNERS

TAX MAP PARCEL	OWNER	DEED BOOK/PAGE	ACRES
76.42-4-23	THE COUNTY OF ALBANY, NEW YORK	2633/418	0.236
76.42-4-41	ALBANY PARKING AUTHORITY	2697/827	0.942
76.42-3-45	ALBANY PARKING AUTHORITY	2697/827	0.652
76.42-3-42	PAUL N. GORDON, ETAL.	2464/1051	0.122
76.42-3-40	412 BROADWAY REALTY, LLC	2835/807	0.252
76.42-5-11	PEARL TOWER ASSOCIATES LIMITED PARTNERSHIP	2408/160	0.812
76.42-5-11	OFC OPERATING CORP.	2476/352	0.034
76.42-5-12	OFC OPERATING CORP.	2476/352	0.036
76.42-5-13	DIVISION TOWER ASSOCIATES	2551/657	0.036
76.42-5-16	DIVISION TOWER ASSOCIATES	2375/113	0.782
76.42-5-21	JOHN W. CLARK	2612/1116	0.022
76.42-5-22	JOHN W. CLARK	2612/1116	0.052
76.42-5-23	JOHN W. CLARK	2612/1116	0.072
76.42-5-24	JOHN W. CLARK	2612/1116	0.042
76.42-5-25	CITY SQUARE ASSOCIATES, LLC	2696/975	0.082
76.42-5-26	ORION ENTERPRISES, LLC	2828/870	0.082
76.42-5-27	JOHN W. CLARK	2612/1116	0.052
76.42-5-28	JOHN W. CLARK	2612/1116	0.012
76.42-5-29	JOHN W. CLARK	2612/1116	0.032
76.42-5-30	JOHN W. CLARK	2612/1116	0.042
76.42-5-31	JOHN W. CLARK	2612/1116	0.042
76.42-5-32	JOHN W. CLARK	2612/1116	0.042
76.42-5-33	JOHN W. CLARK	2612/1116	0.042
76.42-5-34	ALBANY LOCAL DEVELOPMENT CORPORATION	2758/1104	0.302
76.42-5-35	CITY OF ALBANY	NO DEED LISTED	0.222
76.42-5-36	NEIL MCGREEVEY & DIANNA D. MCGREEVEY	2750/832	0.042
76.42-5-37	LIBERTY WAY ASSOCIATES	2541/1096	0.022
76.42-5-38	BROADWAY-LIBERTY COMPANY, LLC	2651/709	0.102
76.42-5-39	WING BUILDING HOLDING COMPANY, LLC	2582/1056	0.102
76.42-5-40	LIBERTY WAY ASSOCIATES	2541/1096	0.072
76.42-5-41	NEIL MCGREEVEY & DIANNA D. MCGREEVEY	2750/832	0.062
76.42-5-42	FIT STOP, LLC	2726/71	0.102
76.42-5-43	UNITED SIGNS OF AMERICA, LLC	2684/21	0.092
76.42-5-44	TERMINAL BUILDING, LLC	2647/616	0.252
76.50-1-2	DIVISION TOWER ASSOCIATES	2405/977	0.392
76.50-1-3	COUNTY OF ALBANY	2240/55	0.042
76.50-1-4	COUNTY OF ALBANY	2240/55	0.032
76.50-1-5	COUNTY OF ALBANY	2236/429	0.032
76.50-1-6	COUNTY OF ALBANY	2196/703	0.042
76.50-1-7	COUNTY OF ALBANY	2366/411	0.012
76.50-1-8	LOUIS GOTTLIEB & NATE LACHOW D/B/A MAI	2283/741	0.042
76.50-1-9	COUNTY OF ALBANY	2196/704	0.132
76.50-1-10	COUNTY OF ALBANY	2162/437	0.072
76.50-1-11	PSC, LLC	2684/92	0.032
76.50-1-12	COUNTY OF ALBANY	2162/437	0.022
76.50-1-13	COUNTY OF ALBANY	2162/437	0.022
76.50-1-14	SMITH JACOBINI	2679/148	0.022
76.50-1-15	CITY SQUARE ASSOCIATES, LLC	2696/975	0.022
76.50-1-16	CITY SQUARE ASSOCIATES, LLC	2696/975	0.022
76.50-1-17	CITY SQUARE ASSOCIATES, LLC	2696/975	0.042
76.50-1-18	CITY SQUARE ASSOCIATES, LLC	2696/975	0.062
76.50-1-19	CITY SQUARE ASSOCIATES, LLC	2696/975	0.062
76.50-1-20	CITY SQUARE ASSOCIATES, LLC	2696/975	0.042
76.50-1-21	CITY SQUARE ASSOCIATES, LLC	2696/975	0.022
76.50-1-22	CITY SQUARE ASSOCIATES, LLC	2696/975	0.032
76.50-1-23	QJ REALTY COMPANY	2354/961	0.422
76.50-1-24	PSC, LLC	2681/376	0.102
76.50-1-25	PSC, LLC	2681/376	0.042
76.50-1-26	PSC, LLC	2681/376	0.032
76.50-1-27	PSC, LLC	2681/376	0.052
76.50-1-28	PSC, LLC	2681/376	0.062
76.50-1-29	PSC, LLC	2681/376	0.142
76.50-1-30	PSC, LLC	2681/376	0.102
76.50-1-31	CITY SQUARE ASSOCIATES, LLC	2670/583	0.212
76.50-1-32	PSC, LLC	2681/376	0.112
76.50-1-33	PSC, LLC	2681/376	0.252
76.50-1-34	CITY SQUARE ASSOCIATES, LLC	2559/913	0.082
76.50-1-35	PSC, LLC	2681/376	0.012
76.50-1-36	CITY OF ALBANY	NO DEED LISTED	0.202
76.11-1-6	QJ REALTY COMPANY	2354/955 & 2354/961	1.232
76.11-1-7	CITY SQUARE ASSOCIATES, LLC	2559/902	0.442
76.11-1-8	CITY SQUARE ASSOCIATES, LLC	2559/907	0.142
76.11-1-9	CITY SQUARE ASSOCIATES, LLC	2696/972	0.052
76.11-1-10	CITY SQUARE ASSOCIATES, LLC	2696/972	0.102
76.11-1-11	CAPITAL LODGE LLC	2667/907	1.002
76.11-1-12	JOHN W. CLARK	2612/1116	0.032
76.11-1-13	CITY SQUARE ASSOCIATES, LLC	2559/907	0.072

- EXISTING UTILITIES**
- EXISTING FIBER
  - EXISTING GAS
  - EXISTING UN-IDENTIFIED UTILITIES
  - EXISTING OVERHEAD UTILITIES
  - EXISTING SANITARY
  - EXISTING STORM SYSTEM
  - EXISTING UNDERGROUND TELEPHONE
  - EXISTING UNDERGROUND TRAFFIC SYSTEM
  - EXISTING UNDERGROUND ELECTRIC
  - EXISTING UNDERGROUND WATER
  - EXISTING CHILLED WATER

- LEGEND**
- CITY STREET OR HIGHWAY BOUNDARY
  - FORMER LOT LINE
  - PROPERTY DIVISION LINE
  - EASEMENT LINE
  - IRF
  - CIRF
  - PK
  - IRON ROD FOUND
  - P.K. NAIL FOUND

- NOTES:**
1. BASE MAPPING PREPARED BY CLOUGH HARBOUR AND ASSOCIATES LLP FROM AN OCTOBER 2007 THROUGH JANUARY 2008 FIELD SURVEY.
  2. NORTH ORIENTATION SHOWN IS TRUE NORTH BASED ON GPS OBSERVATIONS TAKEN AT THE TIME OF THE FIELD SURVEY.
  3. ELEVATIONS SHOWN BASED ON NAVD29 VERTICAL DATUM. HORIZONTAL LOCATION BASE ON NEW YORK STATE PLANE COORDINATE SYSTEM EAST ZONE NAD 83.
  4. SUBJECT TO ANY STATEMENT OF FACT AN UP-TO-DATE ABSTRACT OF TITLE WOULD DISCLOSE.
  5. SUBJECT TO ALL RIGHTS, EASEMENTS, COVENANTS OR RESTRICTIONS OF RECORD.
  6. UNDERGROUND UTILITIES, STRUCTURES AND FACILITIES HAVE BEEN SHOWN FROM RECORD PLANS, SURFACE LOCATIONS AND MEASUREMENTS OBTAINED FROM A FIELD SURVEY, THEREFORE THEIR LOCATIONS MUST BE CONSIDERED APPROXIMATE ONLY. THERE MAY BE OTHER UTILITIES WHICH THE EXISTENCE OF ARE NOT KNOWN. SIZE, TYPE AND LOCATION OF ALL UTILITIES AND STRUCTURES MUST BE VERIFIED BY PROPER AUTHORITIES PRIOR TO ANY AND ALL CONSTRUCTION. CALL DIG SAFE PRIOR TO ANY EXCAVATION.
  7. DUE TO SNOW COVERED CONDITIONS AT THE TIME OF THE FIELD SURVEY, CERTAIN PLANIMETRIC AND TOPOGRAPHIC FEATURES MAY EXIST AND MAY NOT BE SHOWN.
  8. PERMANENT EASEMENT FOR HIGHWAY PURPOSES RESERVED TO THE PEOPLE OF THE STATE OF NEW YORK, SHOWN BASED ON MAP REFERENCES 1-3.



Revisions	Drawn By	App'd. By	Date	UNAUTHORIZED ALTERATION OR ADDITION TO THIS SURVEY MAP IS A VIOLATION OF SECTION 2009 SUBDIVISION OF THE NEW YORK STATE SURVEYING AND MAPPING LAW. THIS SURVEY MAP NOT BEARING THE LAND SURVEYOR'S EMBOSSED SEAL SHALL NOT BE CONSIDERED TO BE VALID. COPIES, REPRODUCTIONS, INDICATED OR IMPLIED HEREON SHALL RUN ONLY TO THE PARTY PREPARED, AND ON THEIR BEHALF TO THE ADDITIONAL PARTIES LISTED HEREON. CERTIFICATES ARE NOT TRANSFERABLE TO SUBSEQUENT OWNERS, UNLESS LISTED HEREON.
ADDITION AND REVISIONS TO TABLE OF OWNERS	WTW	BCW	11/13/08	
MAP ISSUED	MJB	BCW	04/18/08	

Copyright © 2008 Clough Harbour & Associates LLP

CLOUGH HARBOUR & ASSOCIATES LLP  
11 Winans Circle, PO Box 5269 Albany, NY 12205-0269  
Main: (518) 453-4500 • www.cloughharbour.com

