

**GENERAL SITE NOTES**

- GENERAL CONTRACTOR SHALL NOTIFY ALL UTILITY OWNERS HAVING UNDERGROUND UTILITIES ON SITE PRIOR TO EXCAVATION. CONTRACTOR SHALL CONTACT UTILITY LOCATING COMPANY AND LOCATE ALL UTILITIES PRIOR TO ANY EXCAVATION.
- PAVEMENTS SHALL BE STAKED OUT IN THE FIELD BY A LICENSED SURVEYOR.
- DO NOT SCALE BY MEASURING DRAWINGS.
- CONTRACTOR SHALL VERIFY DIMENSIONS AND ACCEPT CONDITIONS BEFORE PROCEEDING WITH WORK. REPORT DISCREPANCIES TO LANDSCAPE ARCHITECT BEFORE PROCEEDING.
- DIMENSIONS TO WALLS, CURBS, AND OTHER FEATURES ARE TO EXPOSED FACES UNLESS OTHERWISE NOTED.

**LEGEND**

- CONTRACT LIMIT LINE
- [Pattern] MEDIUM DUTY ASPHALT
- [Pattern] HEAVY DUTY ASPHALT
- [Pattern] ASPHALT OVERLAY
- [Pattern] STABILIZED AGGREGATE PAVING
- [Pattern] CONCRETE PAVING
- [Pattern] PERVIOUS CONCRETE
- [Pattern] SYNTHETIC TURF
- [Symbol] LIMESTONE BLOCK
- 4' TENSILE WIRE FENCE
- 4' DEER EXCLUSION FENCE
- 4' KNOTTED WIRE MESH FENCE
- 6' CHAIN LINK FENCE
- [Symbol] GATE
- [Symbol] BIKE RACKS
- [Symbol] LIGHT POLES
- [Symbol] WOOD BENCH ON QUARRY BLOCK

**TERMINAL B REDEVELOPMENT**  
**ECHDC**  
 901 FUHRMANN BLVD.  
 BUFFALO, NY 14203

**ERIE CANAL HARBOR DEV. CORPORATION**  
 95 PERRY ST., SUITE 500  
 BUFFALO, NY 14203

**B BERGMANN**  
 ARCHITECTS ENGINEERS PLANNERS  
 280 East Broad Street  
 Suite 200  
 Rochester, NY 14604  
 office: 585.232.5135  
 fax: 585.325.8493  
 www.bergmannpc.com

DATE	DESCRIPTION

**PHASE 1**  
**100% - CD SET**

**Not For Construction**

PROFESSIONAL CERTIFICATION: I CERTIFY THAT THESE DOCUMENTS WERE PREPARED OR APPROVED BY ME, AND THAT I AM A DULY LICENSED ARCHITECT UNDER THE LAWS OF THE (state, commonwealth or district) LICENSE NO. \_\_\_\_\_ EXPIRATION DATE: \_\_\_\_\_

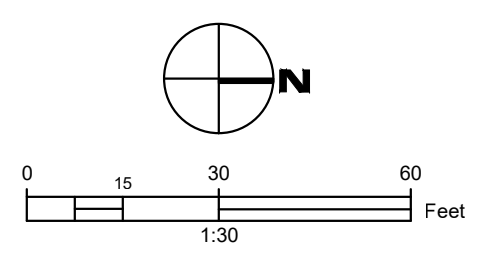
I AM NOT PROVIDING THIS SERVICE IN CONNECTION WITH THE 2020 ENERGY CONSTRUCTION CONSERVATION CODE OF THE (state, commonwealth or district)

Project Manager: <b>M. CHUTEN</b>	Checked By: <b>M. CHUTEN</b>
Drawn By: <b>R. KOVAC</b>	Examined By: <b>RK, MDC, TB, ZR, WV</b>
Date Issued: 6/10/2021	Project Number: 012774.01

**LAYOUT PLAN**

Drawing Number:  
**L201A**

**TERMINAL B - SITE PLAN**



**A1 LAYOUT PLAN**  
 1" = 30'



GENERAL NOTES	
1.	SEE E001 FOR NOTES AND LEGEND.
2.	ALL RECEPTACLES SHALL BE PROVIDED WITH PAD LOCKABLE WEATHER-RESISTANT IN-USE COVERS.
3.	ALL LIGHTS SHALL BE CONNECTED TO A LIGHTING CONTROL SYSTEM.
KEYED NOTES	
1	CONNECT TO EXISTING HANDHOLE.
2	NEW MINIMUM 24"x24"x12" HANDHOLE.

**TERMINAL B REDEVELOPMENT**

**ECHDC**  
901 FUHRMANN BLVD.  
BUFFALO, NY 14203

**ERIE CANAL HARBOR DEV. CORPORATION**  
95 PERRY ST., SUITE 500  
BUFFALO, NY 14203

**B BERGMANN**  
ARCHITECTS ENGINEERS PLANNERS

280 East Broad Street  
Suite 200  
Rochester, NY 14604

office: 585.232.5135  
fax: 585.325.8493  
www.bergmannpc.com

DATE	DESCRIPTION
06/20/2021	PHASE 1 100% - CD SET

**PHASE 1  
100% - CD SET**

PROFESSIONAL CERTIFICATION: I CERTIFY THAT THESE DOCUMENTS WERE PREPARED OR APPROVED BY ME, AND THAT I AM A DULY LICENSED PROFESSIONAL ENGINEER UNDER THE LAWS OF THE STATE COMMONWEALTH OR DISTRICT OF NEW YORK STATE LICENSE NO. NY085647 EXPIRATION DATE: 12/31/2022

TO THE BEST OF MY KNOWLEDGE, BELIEF AND PROFESSIONAL JUDGEMENT, THE PLANS AND SPECIFICATIONS ARE IN COMPLIANCE WITH THE 2020 ENERGY CONSTRUCTION CONSERVATION CODE OF THE STATE COMMONWEALTH OR DISTRICT OF NEW YORK STATE.

**1 ELECTRICAL SITE PLAN - BIKE PARK**  
SCALE: 1"=40'-0"

**TERMINAL B - SITE LIGHTING**

**PRELIMINARY  
NOT FOR CONSTRUCTION**

E. KRUG	J. WOLFF
Project Engineer	Checked By
J. WOLFF	C. RICLEY
Designer	Drawn By
06/20/2021	2019016
Date Issued	Project Number

ELECTRICAL SITE PLAN - TERMINAL B

**LE101A**

ROOM FINISH SCHEDULE									
ROOM NUMBER	ROOM NAME	FLOOR	BASE	WALLS				CEILING	REMARKS
				NORTH	SOUTH	EAST	WEST		
001	LOUNGE	ST1	B1	PT1	PT1	PT2	PT1	EXP	
002	TOILET	PY1	PB1	PT4/PY1	PT4/PY1	PT4/PY1	PT4/PY1	ACT2	
003	SHOWER ROOM	PY1/PY2	PB1	PT4/PY1	PT4/PY1	PT4/PY1	PT4/PY1	ACT2/PT5	
004	POWDER ROOM	ST1	B1	WT2/PT1	WT2/PT1	WT2/PT1	WT2/PT1	ACT1	
005	SERVICE CLOSET	ST1	B1	PT3	PT3	PT3	PT3	EXP	
006	BAR	ST1	B1	PT1	PT1	PT1	PT2/WT	ACT1	
007	AVL	SC1	B1	PT3	PT3	PT3	PT3	EXP	
008	UTILITY	SC1	B1	PT3	PT3	PT3	PT3	EXP	
009	STORAGE	SC1	B1	PT3	PT3	PT3	PT3	EXP	
010	MOP CLOSET			PT3/FRP1	PT3/FRP1	PT3/FRP1	PT3/FRP1	EXP	4' H. FRP WAINSCOT OVER MOP BASIN

ABBREVIATIONS

ACP	ACOUSTIC CEILING PANEL
ACT	ACOUSTIC TILE
AST	ANTISTATIC TILE
B	WALL BASE
C	CARPET
CB	CERAMIC BASE
CER	CERAMIC
CG	CORNER GUARD
CJ	CONTROL JOINT
CL	CENTER LINE
CLG	CLEAR
CLR	CERAMIC MOSAIC TILE
CMT	CULTURED STONE
CS	CERAMIC TILE
CT	EXPOSED - DRYFALL PAINT
EXP	FABRIC
F	FIBER-REINFORCED POLYMER
FRP	FLOOR TILE
FT	HIGH PERFORMANCE COATING
HPC	HARDWARE
HW	LAMINATE
LAM	LINEAR METAL CEILING
LMC	LUXURY VINYL TILE
LVT	PAINT
PT	PORCELAIN BASE
PB	PLASTIC LAMINATE
PLAM	PLASTIC PANELING
PP	PORCELAIN TILE
PY	QUARRY TILE
QT	RUBBER BASE
RB	RESILIENT FLOORING
RF	ROOF PAPER
RP	SEALED CONCRETE
SC	SOLID SURFACE
SS	STAINED CONCRETE
ST	STAINLESS STEEL
STS	TRANSITION
TR	THRESHOLD
TH	UPHOLSTERY
UP	VINYL BASE
VB	VINYL COMPOSITION TILE
VCT	VISUAL DISPLAY
VD	VINYL TILE
VT	WOOD BASE
WB	WALL COVERING
WC	WOOD
WD	WINDOW TREATMENT
WDT	WOOD FLOORING
WF	WALK OFF MAT
WOM	WALL PANEL
WP	WALL TILE
WT	WALL TILE

GENERAL NOTES

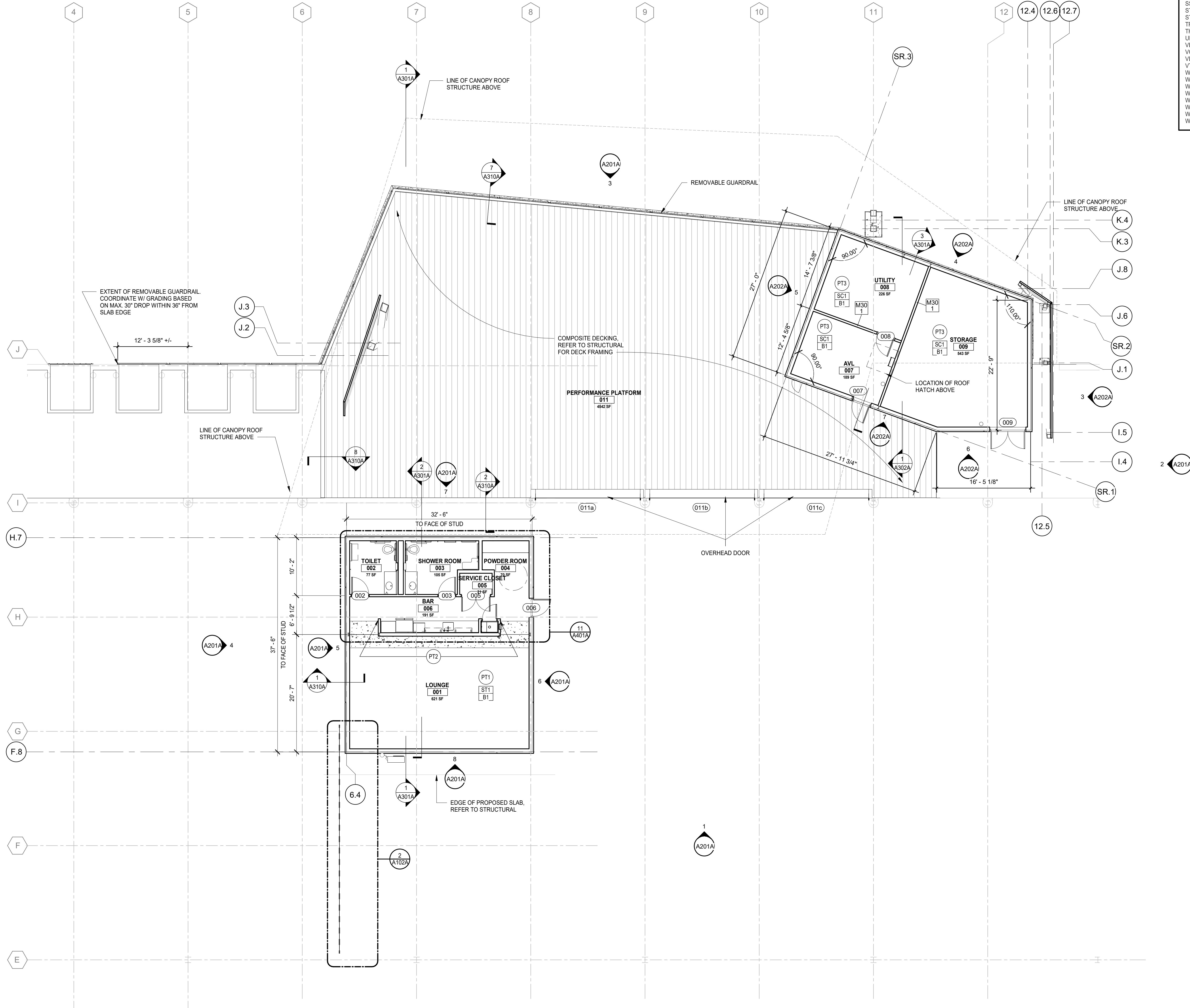
- A. REFER TO A120A SERIES DRAWINGS FOR REFLECTED CEILING PLANS AND DETAILS.
- B. REFER TO A400A SERIES DRAWINGS FOR ADDITIONAL FINISH INFORMATION AND DETAILS.
- C. REFER TO A500A FOR DETAILS, AND ADDITIONAL INFORMATION.
- D. REFER TO A600A SERIES DRAWINGS FOR DOOR SCHEDULE, DETAILS, AND BASIS-OF-DESIGN.
- E. ALL DOORS TO BE LOCATED MINIMUM 4" FROM DRYWALL OF ADJACENT WALL UNLESS OTHERWISE NOTED.

GENERAL FINISH NOTES

- A. COMPLY WITH MANUFACTURERS RECOMMENDATIONS FOR PREPARING AND INSTALLING FINISHES.
- B. GENERAL WALL FINISH TO BE PAINT UNLESS OTHERWISE NOTED.
- C. FILL-IN MINOR IRREGULARITIES IN GYPSUM BOARD WITH SPACKLE COMPOUND AND SAND TO SMOOTH LEVEL SURFACE. CONTRACTOR TO EXERCISE CARE TO AVOID RAISING NAP OF PAPER TAPE.
- D. EXAMINE SURFACES TO RECEIVE PAINT CAREFULLY FOR DEFECTS. DO NOT PROCEED WITH WORK UNTIL DEFECTS ARE CORRECTED.
- E. WHENEVER NECESSARY TO OBTAIN REQUIRED RESULTS, REFINISH AN ENTIRE WALL RATHER THAN SPOT FINISH WHERE A PORTION HAS BEEN DAMAGED DURING CONSTRUCTION.
- F. PREPARE FLOOR SURFACES INCLUDING BUT NOT LIMITED TO THE FOLLOWING:
  - a. PREPARE AND PROPERLY PATCH AND REPAIR EXISTING CONCRETE SLAB TO A SMOOTH LEVEL FINISH.
  - b. FLASH PATCH AS REQUIRED, READY TO RECEIVE NEW FINISH.

FINISH SYMBOL LEGEND

- XXX - FLOOR FINISH
- XXX - WALL BASE FINISH
- XXX - FLOOR FINISH ONLY
- XB - GENERAL WALL FINISH
- XB - ACCENT WALL FINISH - TO EXTENTS
- XB - WALL FINISH ABOVE WAINSCOT
- XB - WAINSCOT FINISH
- XB - WINDOW TREATMENT
- XB - SIGNAGE TAG



TERMINAL B REDEVELOPMENT

ECHDC

901 FUHRMANN BLVD. BUFFALO, NY 14203

ERIE CANAL HARBOR DEV. CORPORATION

95 PERRY ST., SUITE 500 BUFFALO, NY 14203

BERGMANN ARCHITECTS ENGINEERS PLANNERS

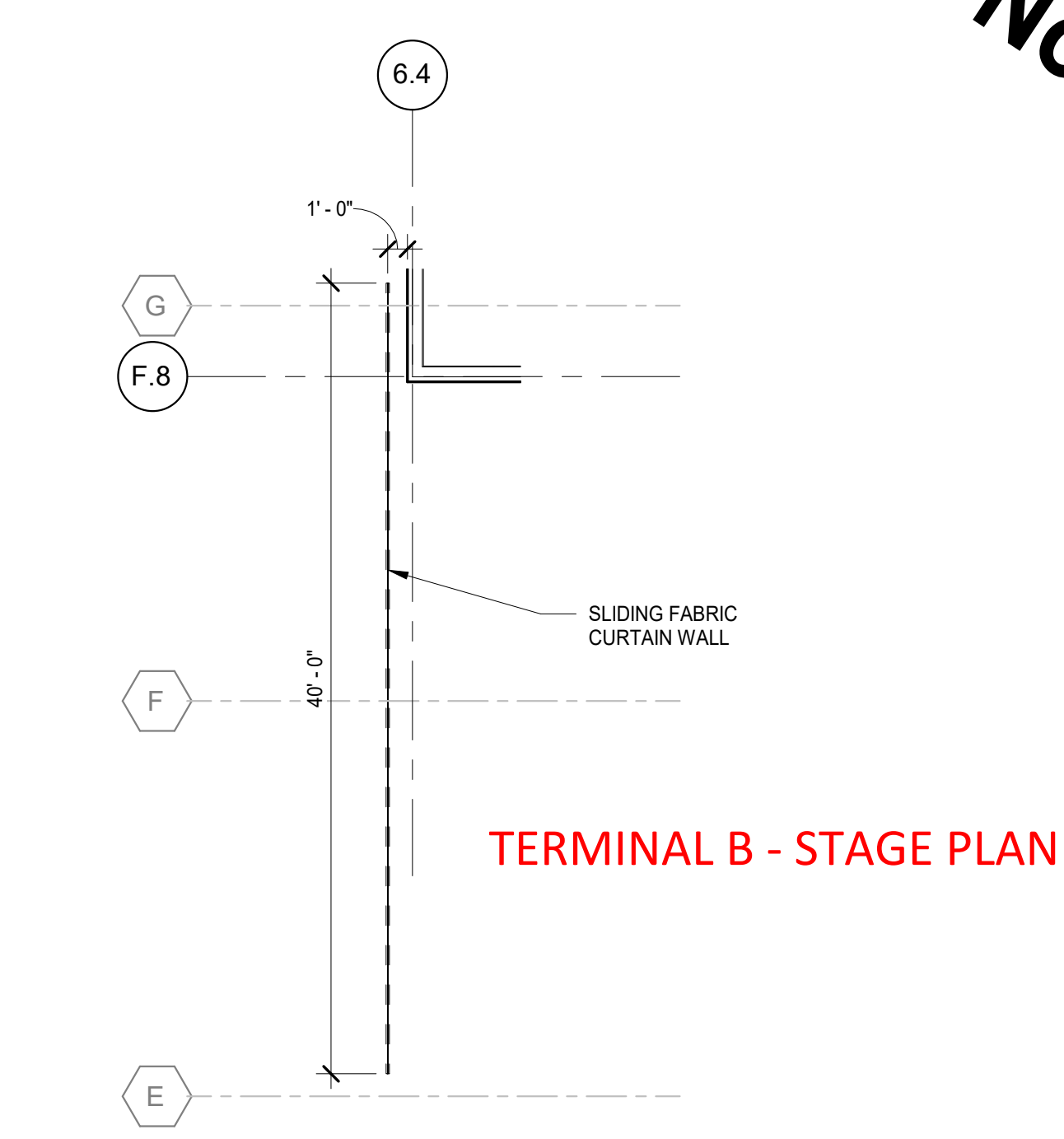
280 East Broad Street Suite 200 Rochester, NY 14604 office: 585.232.5135 fax: 585.325.8493 www.bergmannpc.com

DATE	DESCRIPTION

PHASE 1 100% - CD SET

KEY PLAN

Not For Construction



TERMINAL B - STAGE PLAN

1 FIRST FLOOR CANOPY SCALE: 1/8" = 1'-0"

2 SLIDING FABRIC CURTAIN WALL SCALE: 1/8" = 1'-0"

CANOPY PLAN

A102A

Project Manager: S. KUSHNER	Checked By: J. O'HEARN
Designer: J. LONG	Drawn By: M. KOCKLEY
Date Issued: 8/10/2021	Project Number: 012774.01

LAYOUT LEGEND	
	CONTRACT LIMIT LINE
	HIGHWAY BOUNDARY
	DOT OR DEC EASEMENT

**NOTICE:**  
IT IS A VIOLATION OF LAW FOR ANY PERSON, UNLESS ACTING UNDER THE DIRECTION OF A LICENSED LANDSCAPE ARCHITECT TO ALTER ANY ITEM ON THIS DOCUMENT WHO ALTERS THIS DOCUMENT IS REQUIRED BY LAW TO AFFIX HIS OR HER SEAL AND THE NOTATION "ALTERED BY" FOLLOWED BY HIS OR HER SIGNATURE AND A SPECIFIC DESCRIPTION OF ALTERATIONS.

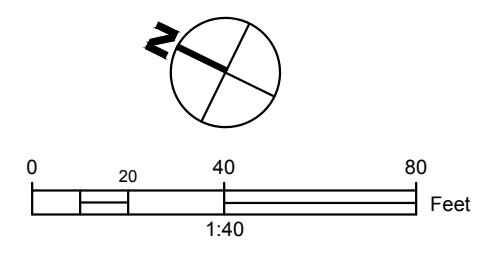
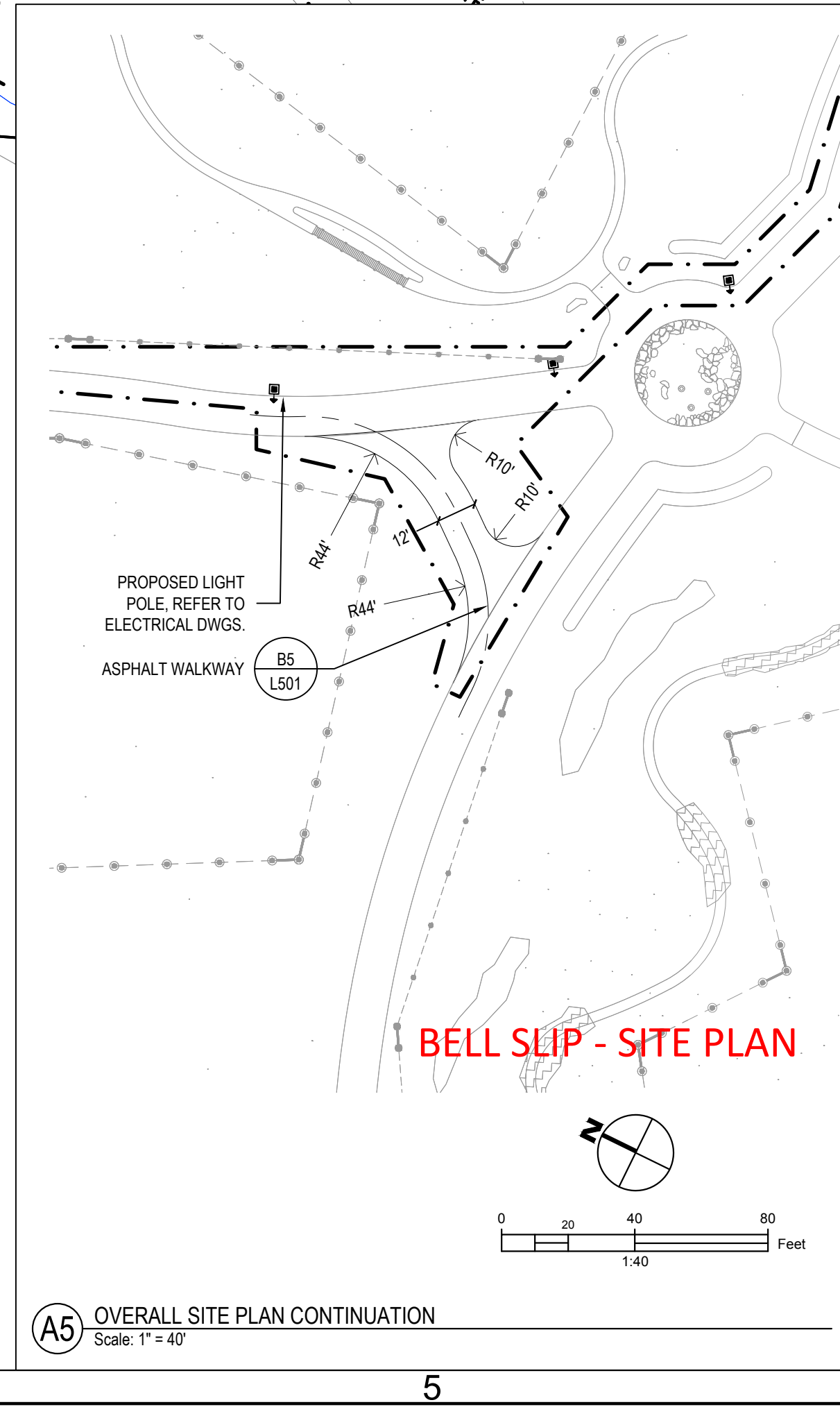
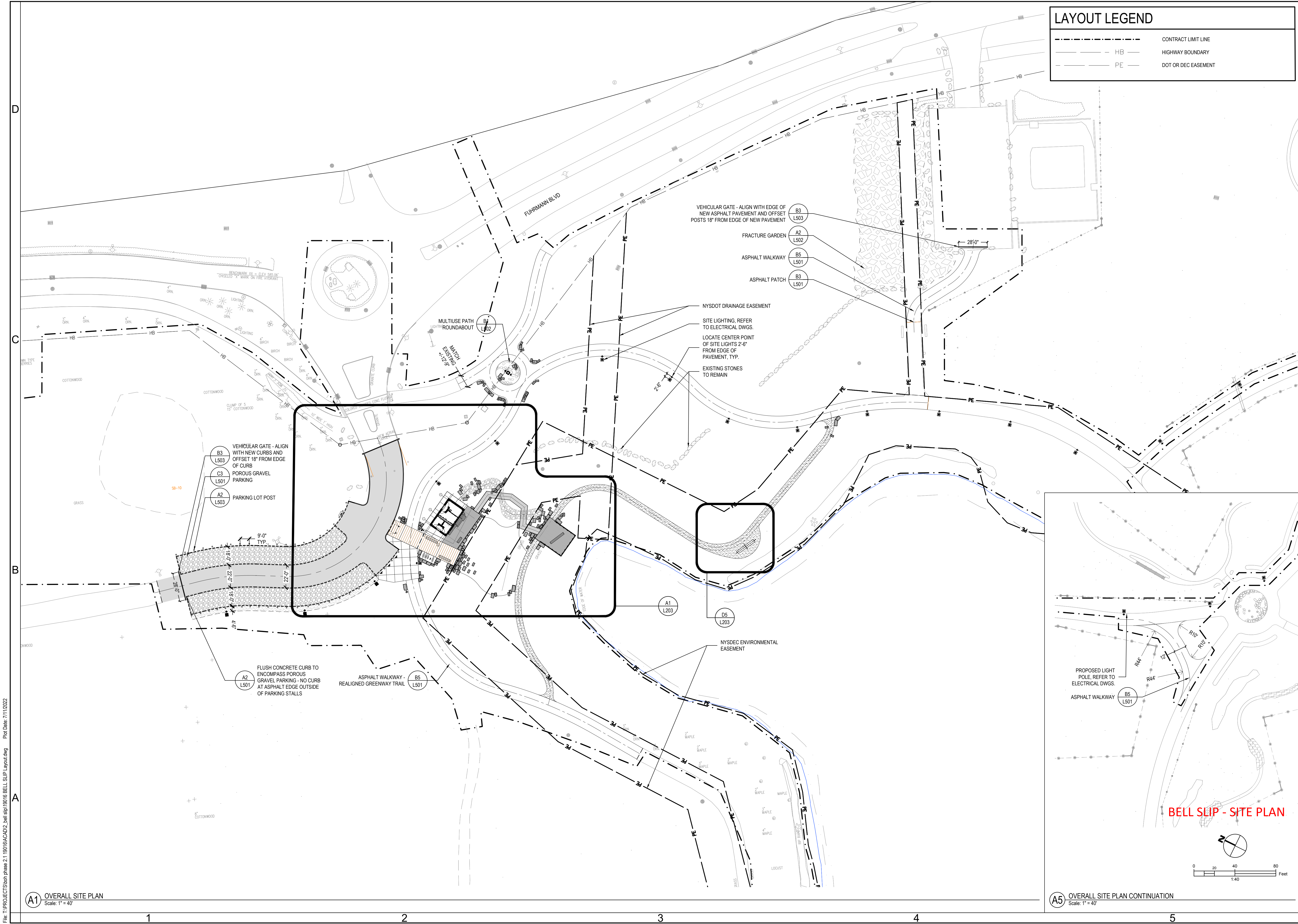
COPYRIGHT © 2022  
TMA | Fisher Associates, P.E., L.S., L.A., D.P.C.

Erie Canal Harbor Development Corporation  
**Buffalo Outer Harbor Access & Activation  
Civic Project, Phase 2 - Bell Slip**  
575 Fuhrmann Boulevard, Buffalo, New York 14203

DATE:	7/15/2022
PROJECT:	19016
PHASE:	BID DOCUMENTS
DRAWN BY:	MDC; ZDR; TBB
CHECKED:	MDC

OVERALL SITE PLAN

**L202**



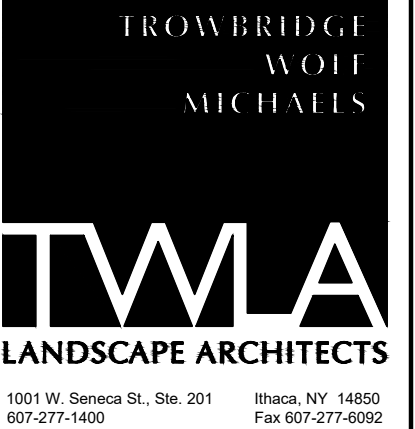
File: T:\PROJECT\Shoh phase 2.1\19016\ACAD\2 bell slip\19016 BELL SLIP Layout.dwg Plot Date: 7/11/2022

**A1** OVERALL SITE PLAN  
Scale: 1" = 40'

**A5** OVERALL SITE PLAN CONTINUATION  
Scale: 1" = 40'

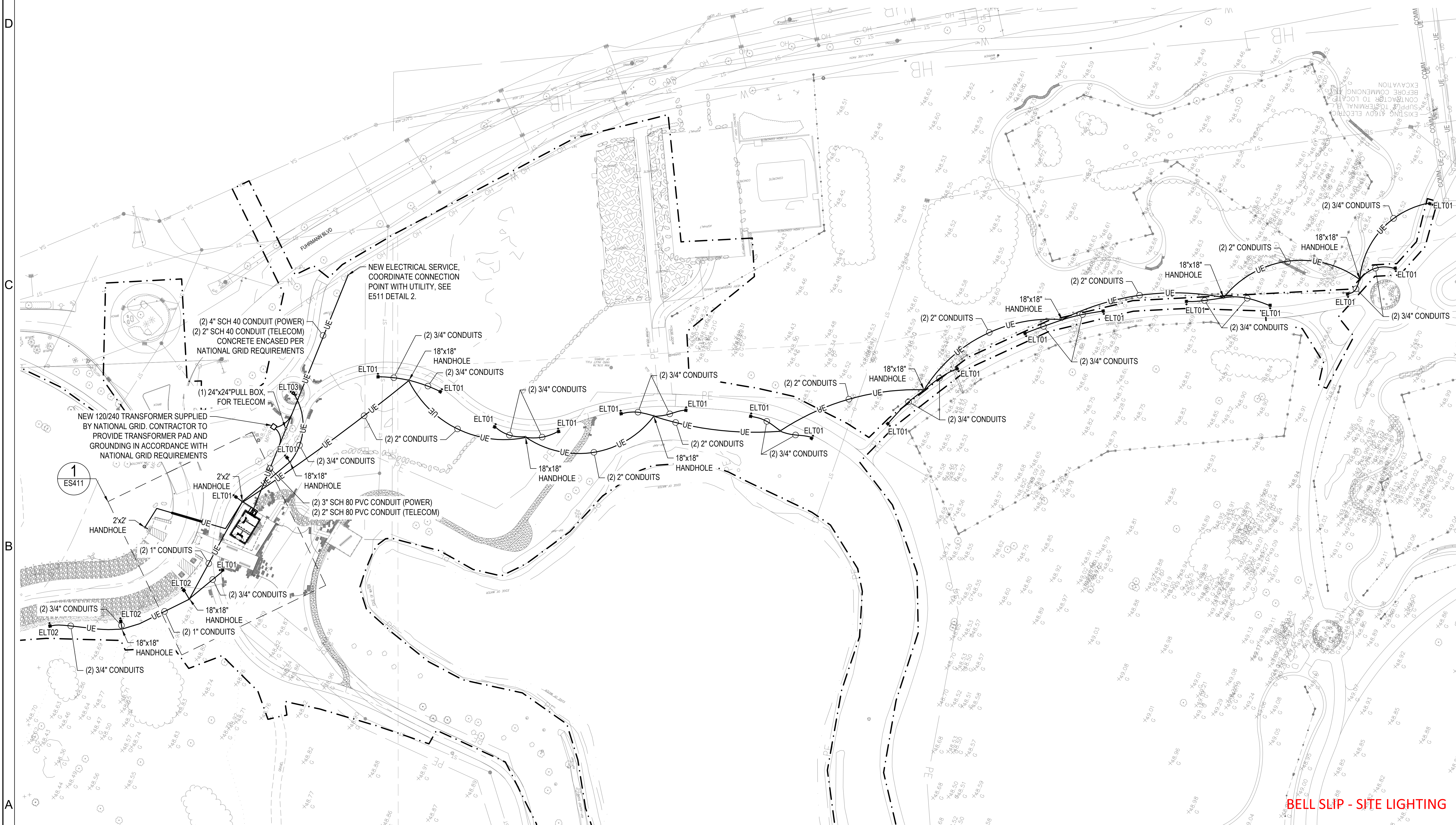
**GENERAL NOTES**

1. SEE E011 FOR E-SERIES NOTES AND LEGEND.
2. CONDUIT ROUTINGS SHOWN ARE DIAGRAMMATIC CONTRACTOR TO ADJUST AS REQUIRED TO ACCOMMODATE FIELD CONDITIONS.



**NOTICE:**  
IT IS A VIOLATION OF LAW FOR ANY PERSON, UNLESS ACTING UNDER THE DIRECTION OF A LICENSED LANDSCAPE ARCHITECT TO ALTER ANY ITEM ON THIS DOCUMENT WHO ALTERS THIS DOCUMENT IS REQUIRED BY LAW TO AFFIX HIS OR HER SEAL AND THE NOTATION "ALTERED BY" FOLLOWED BY HIS OR HER SIGNATURE AND A SPECIFIC DESCRIPTION OF ALTERATIONS.

COPYRIGHT © 2022  
TMA/Fisher Associates, P.E., L.S., L.A., D.P.C.



**1 ELECTRICAL SITE PLAN - BELL SLIP**  
SCALE: 1"=50'-0"

**BELL SLIP - SITE LIGHTING**

**PRELIMINARY**  
NOT FOR CONSTRUCTION

Eric Canal Harbor Development Corporation  
**Buffalo Outer Harbor Access & Activation**  
**Civic Project, Phase 2 - Bell Slip**  
 575 Fuhrmann Boulevard, Buffalo, New York 14203

DATE:	7/15/2022
PROJECT:	19016
PHASE:	BID DOCUMENTS
DRAWN BY:	CJR
CHECKED:	JFF

BELL SLIP ELECTRICAL SITE PLAN

**ES111**




- ### LAYOUT NOTES
- GENERAL CONTRACTOR SHALL NOTIFY ALL UTILITY OWNERS HAVING UNDERGROUND UTILITIES ON SITE PRIOR TO EXCAVATION. CONTRACTOR SHALL CONTACT UTILITY LOCATING COMPANY AND LOCATE ALL UTILITIES PRIOR TO ANY EXCAVATION.
  - TRAILS AND PLAZA TO BE STAKED OUT IN THE FIELD BY A LICENSED SURVEYOR.
  - DO NOT SCALE BY MEASURING DRAWINGS.
  - VERIFY DIMENSIONS AND ACCEPT CONDITIONS BEFORE PROCEEDING WITH WORK. REPORT DISCREPANCIES TO LANDSCAPE ARCHITECT BEFORE PROCEEDING.
  - DIMENSIONS TO WALLS, CURBS, AND OTHER FEATURES ARE TO EXPOSED FACES UNLESS OTHERWISE NOTED.
  - MINIMUM RADIUS AT PATH AND WALK INTERSECTIONS SHALL BE 5'.
  - BOULDERS TO BE LAID OUT IN FIELD WITH LANDSCAPE ARCHITECT.

### MATERIALS LEGEND

	MEDIUM DUTY CONCRETE
	HEAVY DUTY CONCRETE
	ASPHALT PAVING
	HEAVY DUTY ASPHALT PAVING
	WOOD DECK
	REINFORCED TURF PARKING
	WOOD POST TENSILE WIRE FENCE
	CONTRACT LIMIT LINE
	LIMIT OF DISTURBANCE
	WIRE MESH FENCE
	BOLLARDS

IT IS A VIOLATION OF LAW FOR ANY PERSON, UNLESS ACTING UNDER THE DIRECTION OF A LICENSED LANDSCAPE ARCHITECT TO ALTER ANY ITEM ON THIS DOCUMENT WHO ALTERS THIS DOCUMENT IS REQUIRED BY LAW TO AFFIX HIS OR HER SEAL AND THE NOTATION "ALTERED BY" FOLLOWED BY HIS OR HER SIGNATURE AND A SPECIFIC DESCRIPTION OF ALTERATIONS.

COPYRIGHT © 2022  
TWMA|Fisher Associates, P.E., L.S., L.A., D.P.C.



**A FISHER ASSOCIATES**  
LANDSCAPE ARCHITECTURE STUDIO  
100 N. WILKESON BLVD. STE. 101 BUFFALO, NY 14203

**Buffalo Outer Harbor Access & Activation  
Civic Project, Phase 2 - Wilkeson Pointe**

Erie Canal Harbor Development Corporation  
Fuhmann Boulevard, Buffalo, New York 14203

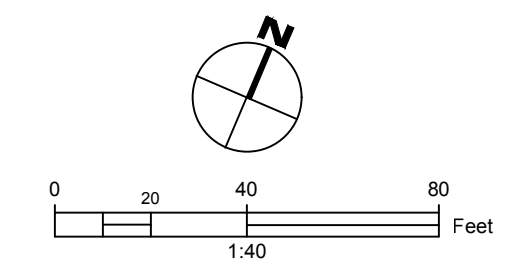
DATE:	4/29/2022
PROJECT:	19016
PHASE:	BID DOCUMENTS
DRAWN BY:	ZDR; TBB; MLO
CHECKED:	MDC

LAYOUT PLAN

L201

WILKESON POINTE - SITE PLAN

**A1 WILKESON POINTE LAYOUT PLAN**  
Scale: 1" = 40'



**GENERAL NOTES**

- SEE E001 FOR E-SERIES NOTES AND LEGEND.
- CONDUIT ROUTINGS SHOWN ARE DIAGRAMMATIC CONTRACTOR TO ADJUST AS REQUIRED TO ACCOMMODATE FIELD CONDITIONS.
- ALL SITE RECEPTACLE CIRCUITS SHALL UTILIZE #10 AWG WIRE

**KEYED NOTES**

- POWER BOLLARD. SEE DETAIL 5, ON E501. ADDITIONALLY PROVIDE WITH FIBER OPTIC CABLE JACK (TYPE LC) WITH IN-USE COVER.
- NEW ELECTRICAL SERVICE TRANSFORMER (SUPPLIED BY UTILITY). PROVIDE CONCRETE PAD IN ACCORDANCE WITH UTILITY REQUIREMENTS.

TROWBRIDGE  
WOLF  
MICHAELS

**TWA**  
LANDSCAPE ARCHITECTS

1001 W. Seneca St., Ste. 201 Buffalo, NY 14203  
807.277.4400 Fax 807.277.4002

**ENCORUS GROUP**

encorus.com

**NOTICE:**  
IT IS A VIOLATION OF LAW FOR ANY PERSON, UNLESS ACTING UNDER THE DIRECTION OF A LICENSED LANDSCAPE ARCHITECT TO ALTER ANY ITEM ON THIS DOCUMENT WHO ALTERS THIS DOCUMENT IS REQUIRED BY LAW TO AFFIX HIS OR HER SEAL AND THE NOTATION "ALTERED BY" FOLLOWED BY HIS OR HER SIGNATURE AND A SPECIFIC DESCRIPTION OF ALTERATIONS.

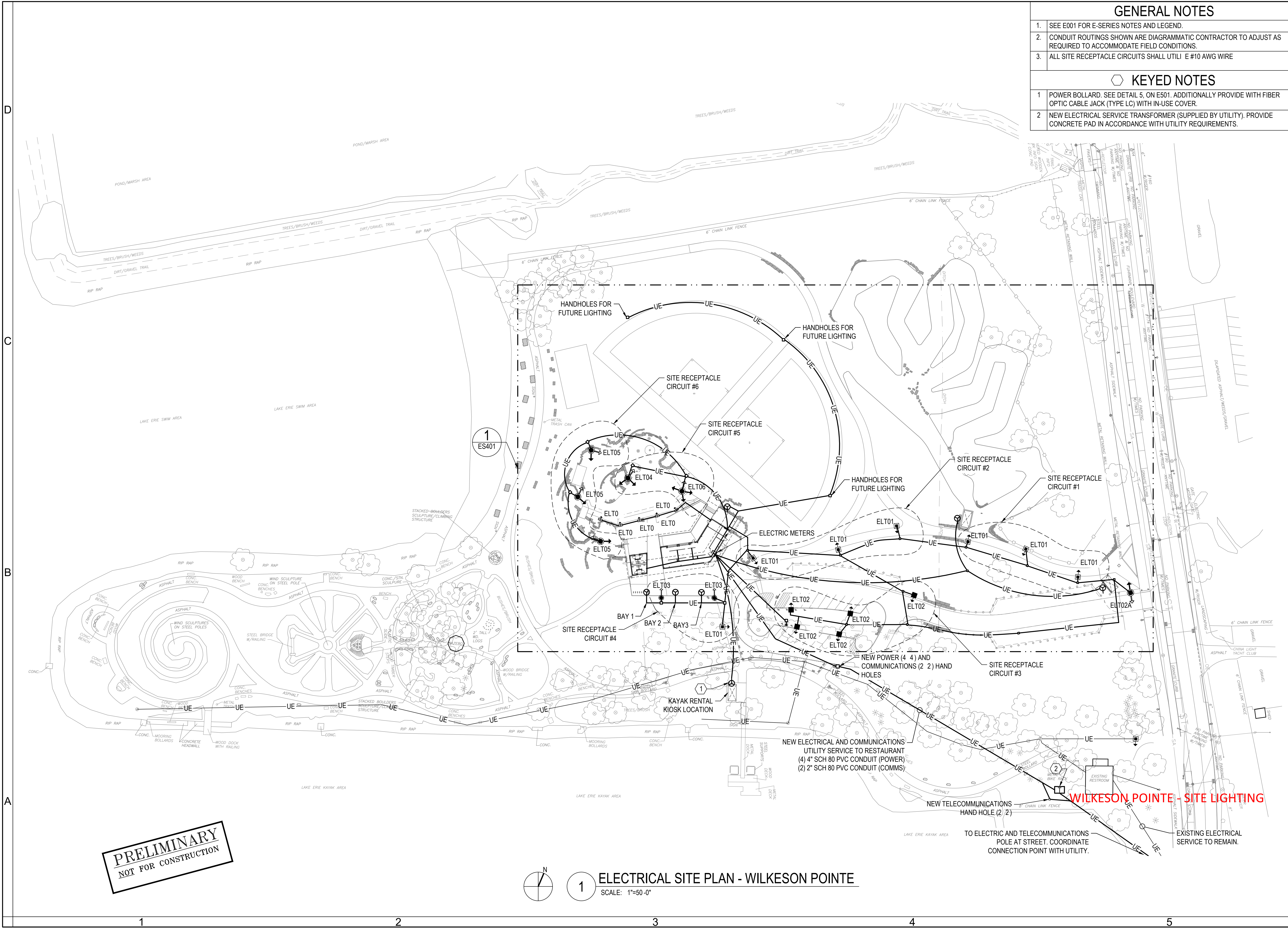
COPYRIGHT © 2022  
TWA|Fisher Associates, P.E., L.S., L.A., D.P.C.

Erie Canal Harbor Development Corporation  
**Buffalo Outer Harbor Access & Activation Civic Project, Phase 2 - Wilkeson Pointe**  
Fuhmann Boulevard, Buffalo, New York 14203

DATE:	04/29/2022
PROJECT:	19016
PHASE:	BID DOCUMENTS
DRAWN BY:	CJR
CHECKED:	JFF

WILKESON POINTE  
ELECTRICAL SITE PLAN

**ES101**

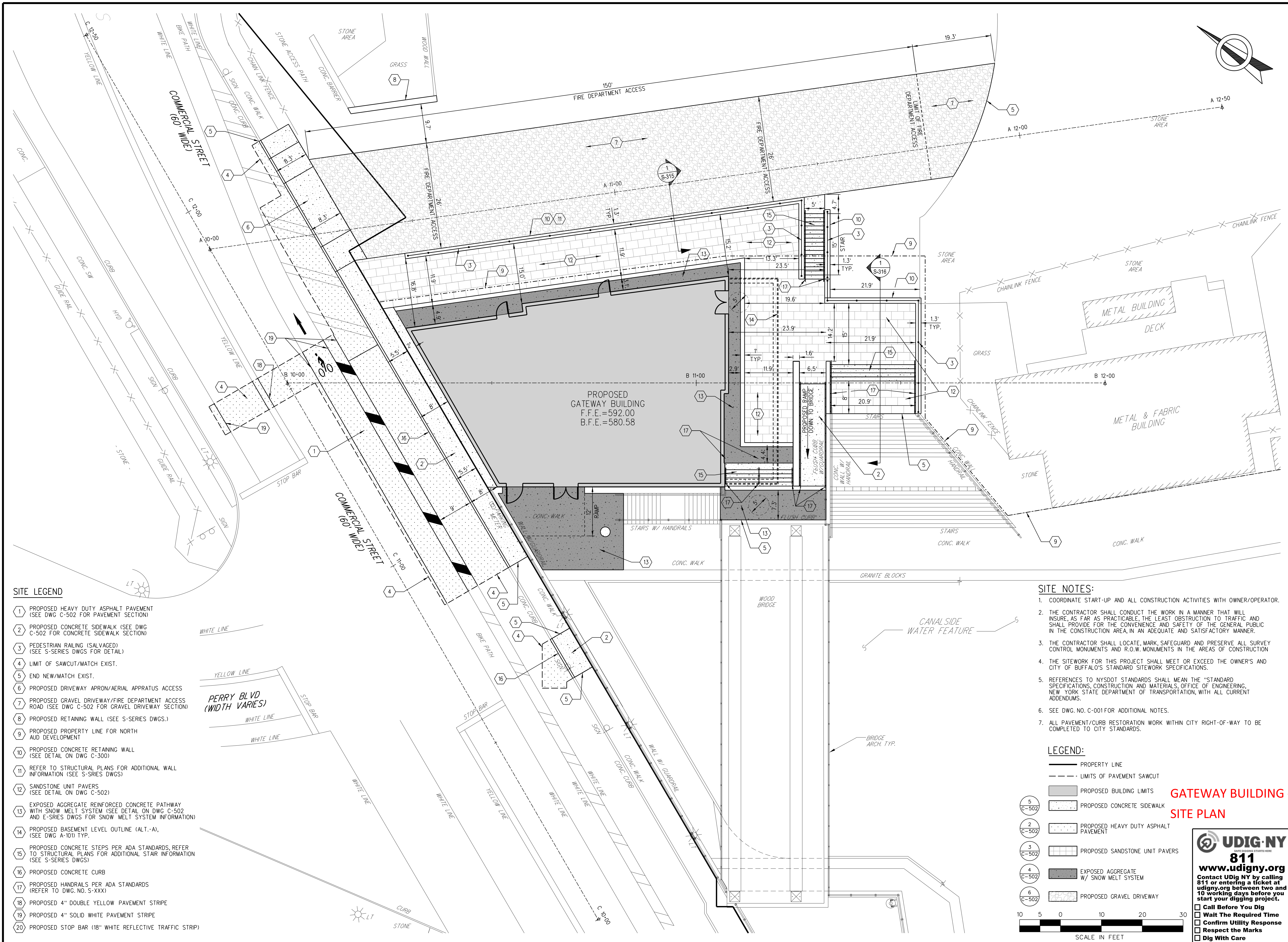


**PRELIMINARY**  
NOT FOR CONSTRUCTION

**1 ELECTRICAL SITE PLAN - WILKESON POINTE**  
SCALE: 1"=50'-0"

D  
C  
B  
A

1 2 3 4 5



- SITE LEGEND**
- 1 PROPOSED HEAVY DUTY ASPHALT PAVEMENT (SEE DWG C-502 FOR PAVEMENT SECTION)
  - 2 PROPOSED CONCRETE SIDEWALK (SEE DWG C-502 FOR CONCRETE SIDEWALK SECTION)
  - 3 PEDESTRIAN RAILING (SALVAGED) (SEE S-SERIES DWGS FOR DETAIL)
  - 4 LIMIT OF SAWCUT/MATCH EXIST.
  - 5 END NEW/MATCH EXIST.
  - 6 PROPOSED DRIVEWAY APRON/AERIAL APPRATUS ACCESS
  - 7 PROPOSED GRAVEL DRIVEWAY/FIRE DEPARTMENT ACCESS ROAD (SEE DWG C-502 FOR GRAVEL DRIVEWAY SECTION)
  - 8 PROPOSED RETAINING WALL (SEE S-SERIES DWGS.)
  - 9 PROPOSED PROPERTY LINE FOR NORTH AUD DEVELOPMENT
  - 10 PROPOSED CONCRETE RETAINING WALL (SEE DETAIL ON DWG C-300)
  - 11 REFER TO STRUCTURAL PLANS FOR ADDITIONAL WALL INFORMATION (SEE S-SERIES DWGS)
  - 12 SANDSTONE UNIT PAVERS (SEE DETAIL ON DWG C-502)
  - 13 EXPOSED AGGREGATE REINFORCED CONCRETE PATHWAY WITH SNOW MELT SYSTEM (SEE DETAIL ON DWG C-502 AND E-SERIES DWGS FOR SNOW MELT SYSTEM INFORMATION)
  - 14 PROPOSED BASEMENT LEVEL OUTLINE (ALT.-A), (SEE DWG A-101) TYP.
  - 15 PROPOSED CONCRETE STEPS PER ADA STANDARDS, REFER TO STRUCTURAL PLANS FOR ADDITIONAL STAIR INFORMATION (SEE S-SERIES DWGS)
  - 16 PROPOSED CONCRETE CURB
  - 17 PROPOSED HANDRAILS PER ADA STANDARDS (REFER TO DWG. NO. S-XXX)
  - 18 PROPOSED 4" DOUBLE YELLOW PAVEMENT STRIPE
  - 19 PROPOSED 4" SOLID WHITE PAVEMENT STRIPE
  - 20 PROPOSED STOP BAR (18" WHITE REFLECTIVE TRAFFIC STRIP)

- SITE NOTES:**
1. COORDINATE START-UP AND ALL CONSTRUCTION ACTIVITIES WITH OWNER/OPERATOR.
  2. THE CONTRACTOR SHALL CONDUCT THE WORK IN A MANNER THAT WILL INSURE, AS FAR AS PRACTICABLE, THE LEAST OBSTRUCTION TO TRAFFIC AND SHALL PROVIDE FOR THE CONVENIENCE AND SAFETY OF THE GENERAL PUBLIC IN THE CONSTRUCTION AREA, IN AN ADEQUATE AND SATISFACTORY MANNER.
  3. THE CONTRACTOR SHALL LOCATE, MARK, SAFEGUARD AND PRESERVE ALL SURVEY CONTROL MONUMENTS AND R.O.W. MONUMENTS IN THE AREAS OF CONSTRUCTION
  4. THE SITEWORK FOR THIS PROJECT SHALL MEET OR EXCEED THE OWNER'S AND CITY OF BUFFALO'S STANDARD SITEWORK SPECIFICATIONS.
  5. REFERENCES TO NYSDOT STANDARDS SHALL MEAN THE "STANDARD SPECIFICATIONS, CONSTRUCTION AND MATERIALS, OFFICE OF ENGINEERING, NEW YORK STATE DEPARTMENT OF TRANSPORTATION, WITH ALL CURRENT ADDENDUMS.
  6. SEE DWG. NO. C-001 FOR ADDITIONAL NOTES.
  7. ALL PAVEMENT/CURB RESTORATION WORK WITHIN CITY RIGHT-OF-WAY TO BE COMPLETED TO CITY STANDARDS.

**LEGEND:**

- PROPERTY LINE
- - - LIMITS OF PAVEMENT SAWCUT
- PROPOSED BUILDING LIMITS
- ▨ PROPOSED CONCRETE SIDEWALK
- ▩ PROPOSED HEAVY DUTY ASPHALT PAVEMENT
- ▧ PROPOSED SANDSTONE UNIT PAVERS
- ▦ EXPOSED AGGREGATE W/ SNOW MELT SYSTEM
- ▤ PROPOSED GRAVEL DRIVEWAY

5 0 10 20 30  
SCALE IN FEET

**UDIG.NY**  
 811  
 www.udigny.org  
 Contact UDIG NY by calling 811 or entering a ticket at udigny.org between two and 10 working days before you start your digging project.  
 Call Before You Dig  
 Wait The Required Time  
 Confirm Utility Response  
 Respect the Marks  
 Dig With Care

IT IS A VIOLATION OF NYS LAW FOR ANY PERSON TO ALTER A DOCUMENT IN ANY WAY, UNLESS ACTING UNDER THE DIRECTION OF A REGISTERED PROFESSIONAL ENGINEER. ANY SUCH ALTERATION SHALL BE MADE TO THE DOCUMENT UNDER THE SEAL AND SIGNATURE OF THE REGISTERED PROFESSIONAL ENGINEER. SUCH ALTERATION AND A SPECIFIC DESCRIPTION OF THE ALTERATION.

NO.	DATE	DESCRIPTION

**E. J. Min**  
 77 Broadway Street, Suite 208  
 Buffalo, New York 14203  
 716-242-5800

**ERIE CANAL HARBOR DEVELOPMENT CORPORATION**  
 1300 MARSHFIELD AVENUE, BUFFALO, NY 14203  
 95 FERRY STREET, CITY OF BUFFALO, NEW YORK

**GATEWAY BUILDING - NORTH AUD BLOCK - SITE PLAN**

**BID SET 02.09.23**

PROJECT NO.: 437033.01  
 DATE: 02/09/2023  
 SCALE: 1"=10'  
 DRAWING NO.: C-101  
 PROJECT MGR: HKG  
 DRAWN BY: XDM  
 CHECK BY: NEB  
 REVISION NO.: