



Planning & Coordination
 Architectural Resources
 Estimating
 Baer & Associates, LLC
 Water Feature Design
 Cloward H2O
 Surveyor
 Foil-Albert Associates
 Historic
 Preservation Studios
 Landscape Architects & Planning
 Quennell Rothschild & Partners, LLP
 Geotechnical
 SJB/Empire-Geo Services, Inc.
 Special Lighting
 Tillotson Design
 Structural & Electrical Engineers
 Watts Architecture & Engineering, PC

**Inner Harbor Development
 Phase 3A - Canal Side
 Public Canal Environments**
Erie Canal Harbor Development Corporation

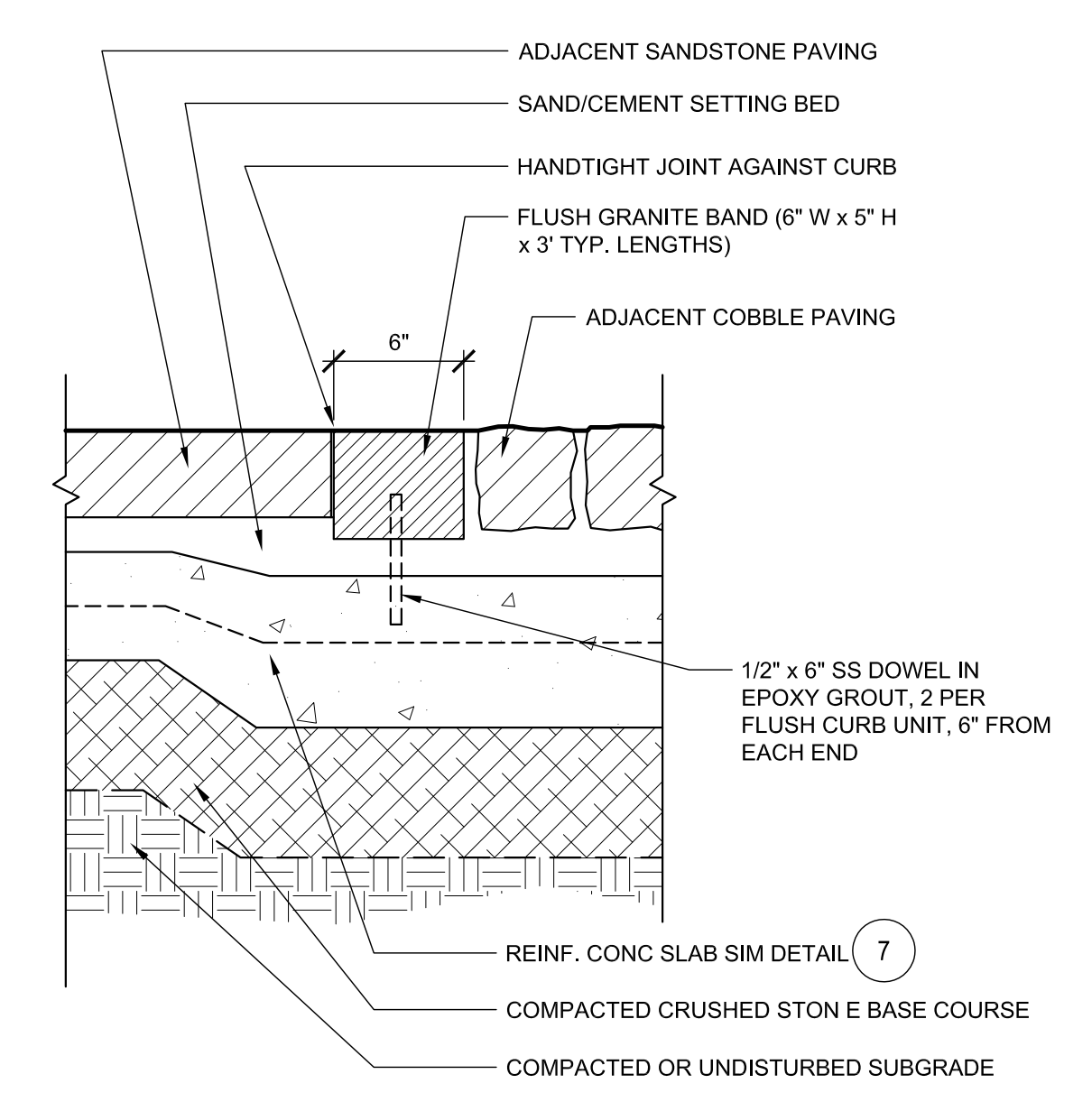
ISSUED FOR BIDDING PURPOSES;
 NOT TO BE USED FOR CONSTRUCTION

MARK	DATE	DESCRIPTION
REVISIONS		
PROJECT NO: H34.002.001		
DATE: NOVEMBER 16, 2011		
DRAWN BY: CRP		
DESIGNED BY: M. BUNNELL		
CHECKED BY:		

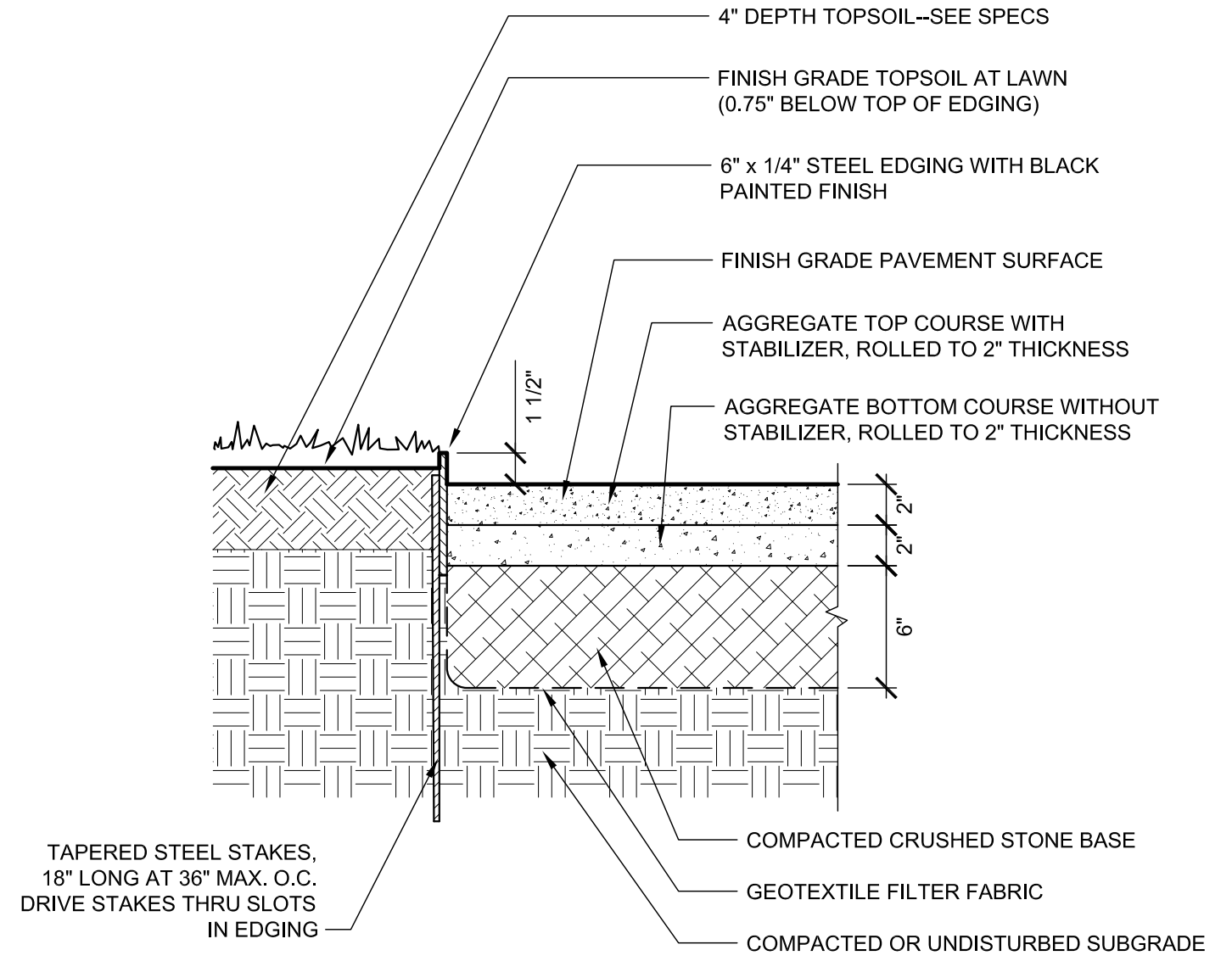
NO ALTERATION PERMITTED HEREON
 EXCEPT AS PROVIDED UNDER SECTION
 7209 SUBDIVISION 2 OF THE NEW YORK
 EDUCATION LAW

LANDSCAPE
**PAVING & MISC.
 DETAILS**

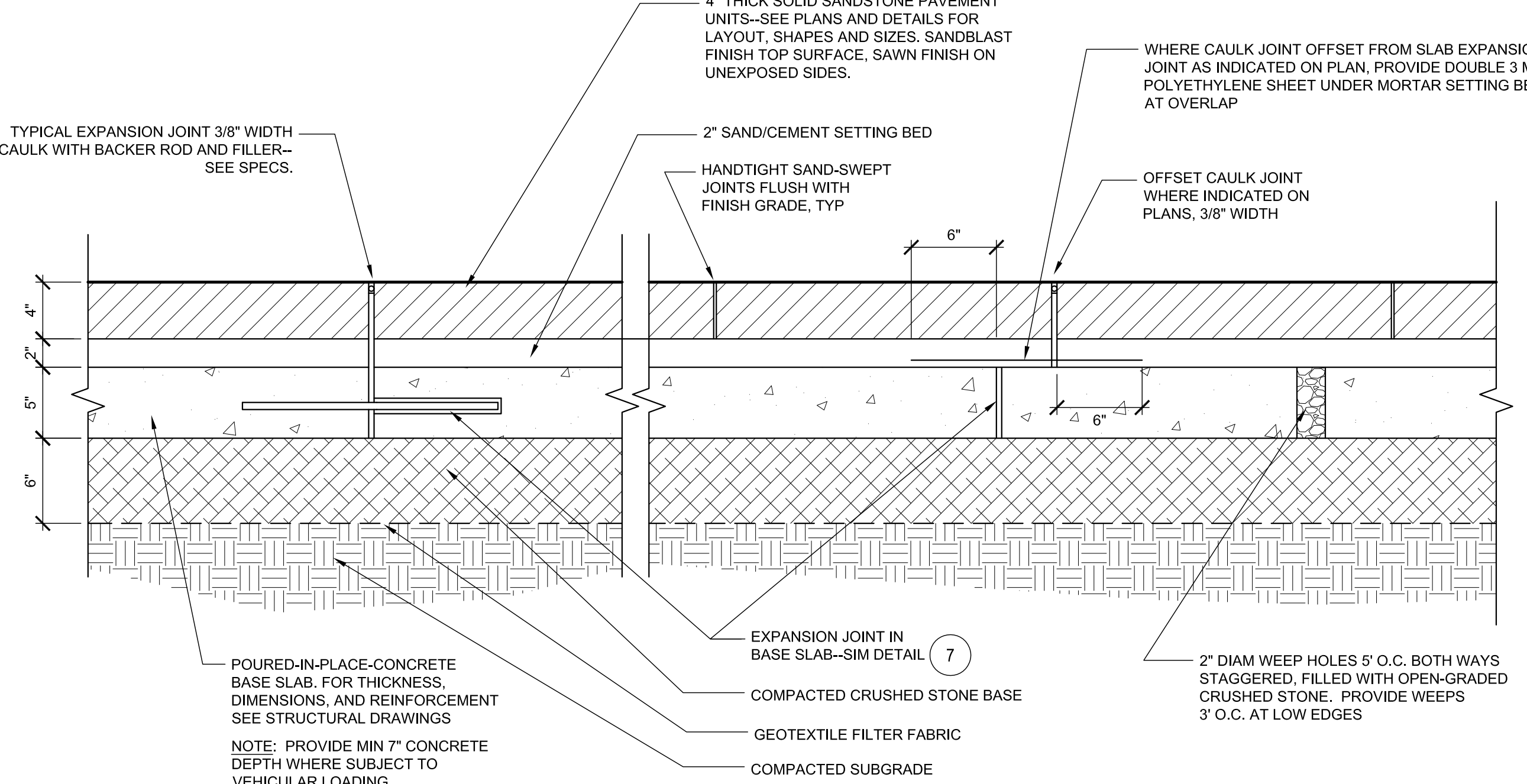
Nov 16, 2011 6:42pm
 G:\1109203\drawings\11-csl\LS-501 thru 503-bldg.dwg
LS503



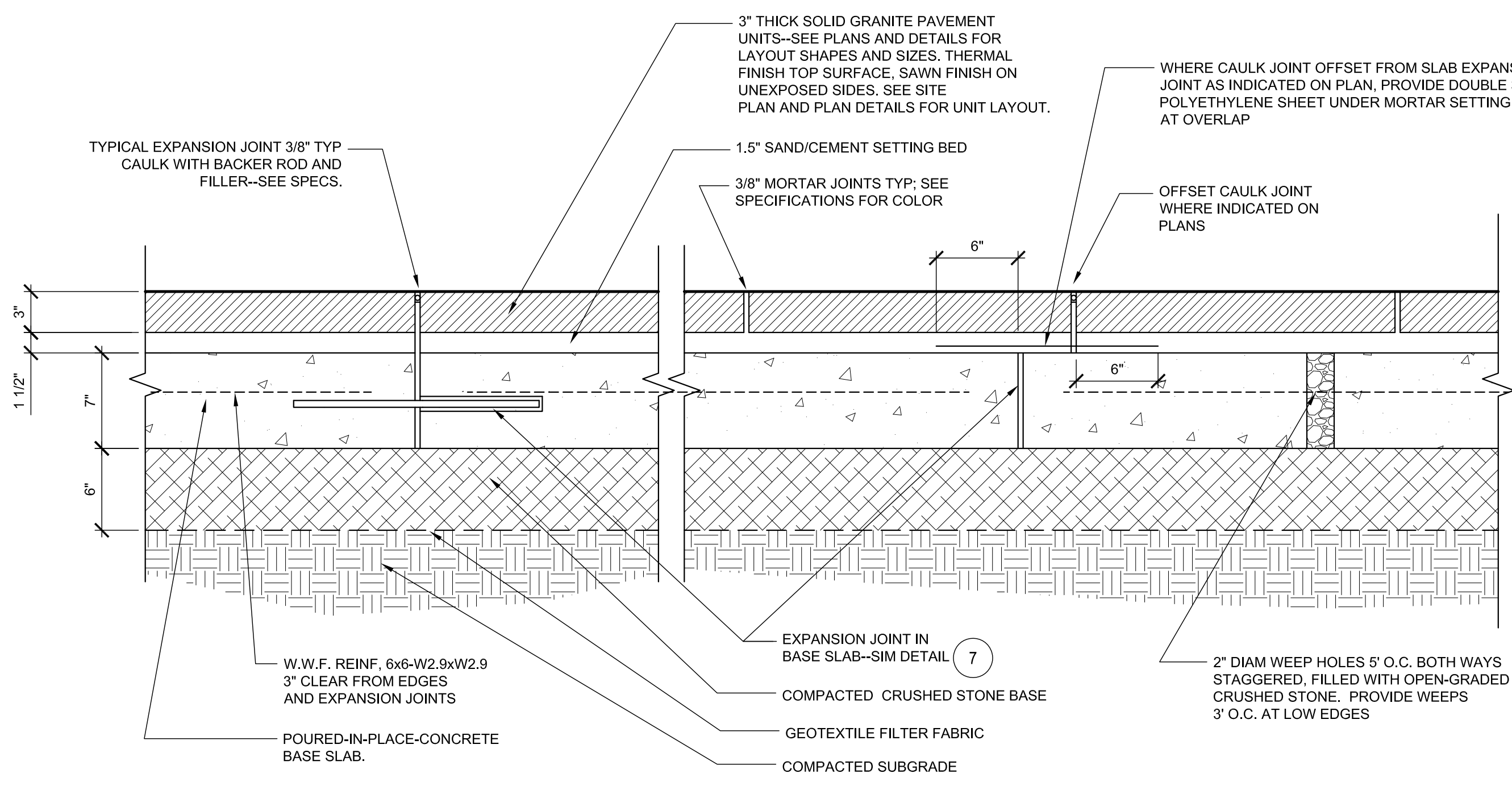
3 GRANITE FLUSH CURB
 1-1/2" = 1'-0"



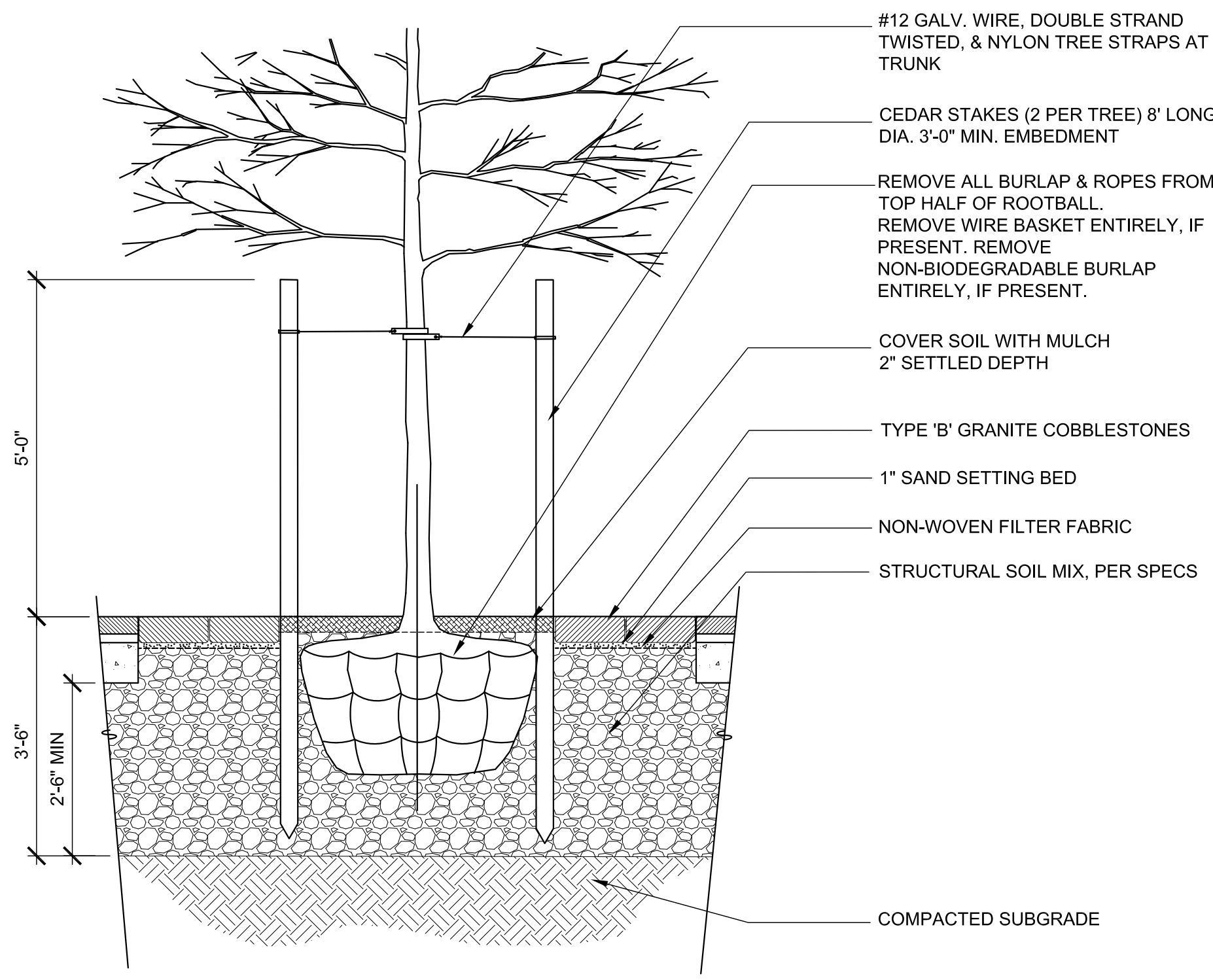
6 STABILIZED AGGREGATE PAVEMENT
 1-1/2" = 1'-0"



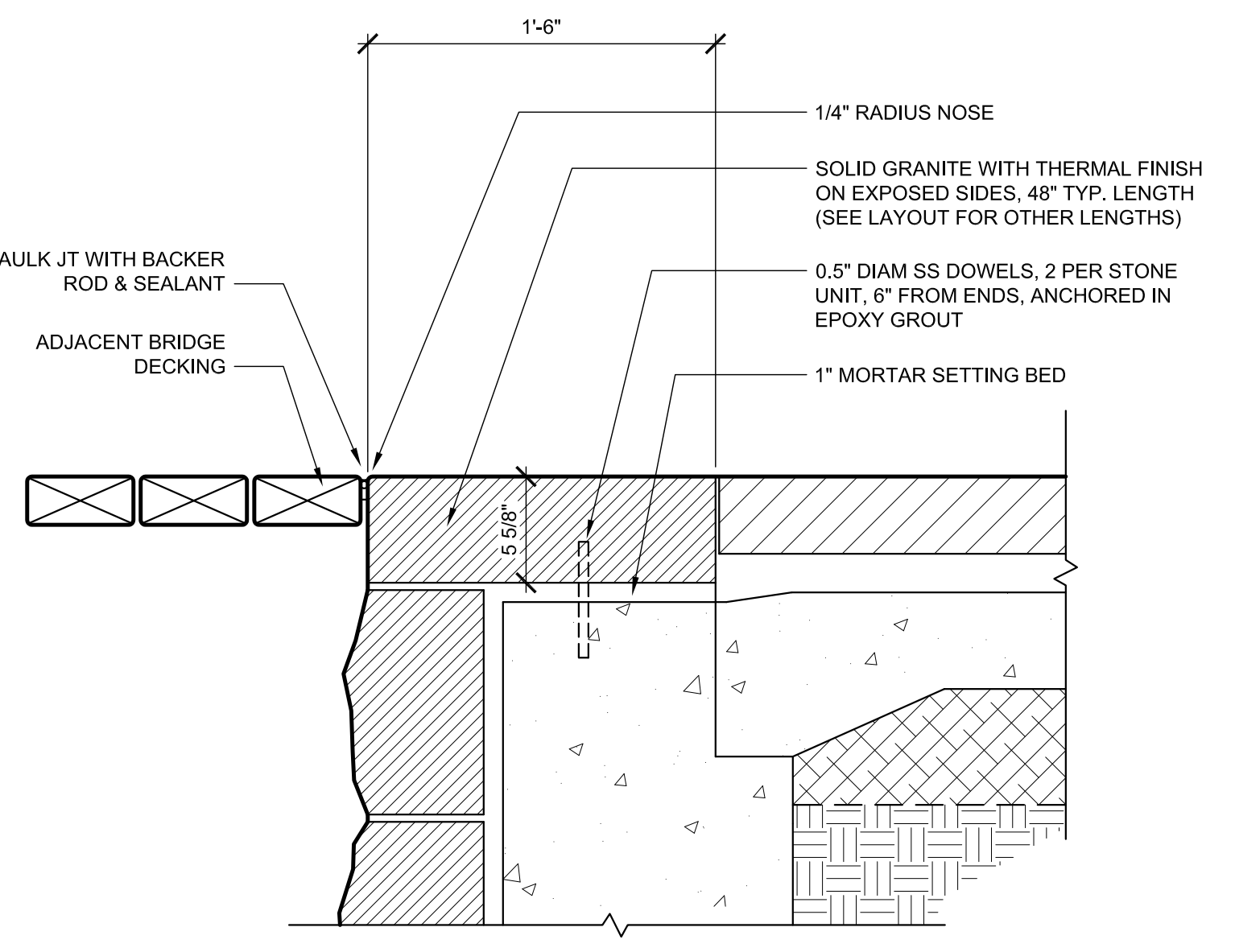
2 SANDSTONE PAVEMENT
 1-1/2" = 1'-0"



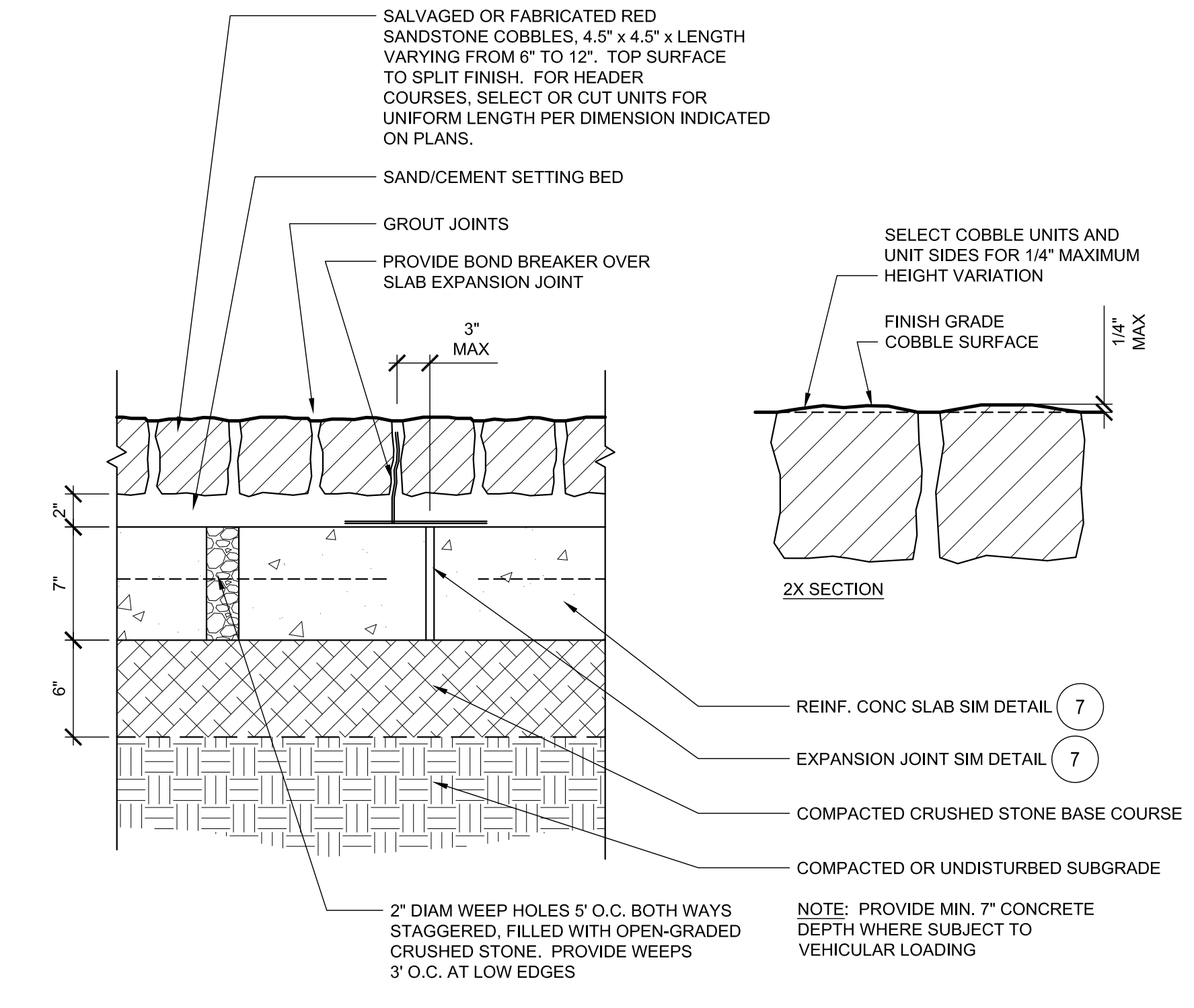
5 GRANITE PAVEMENT
 1-1/2" = 1'-0"



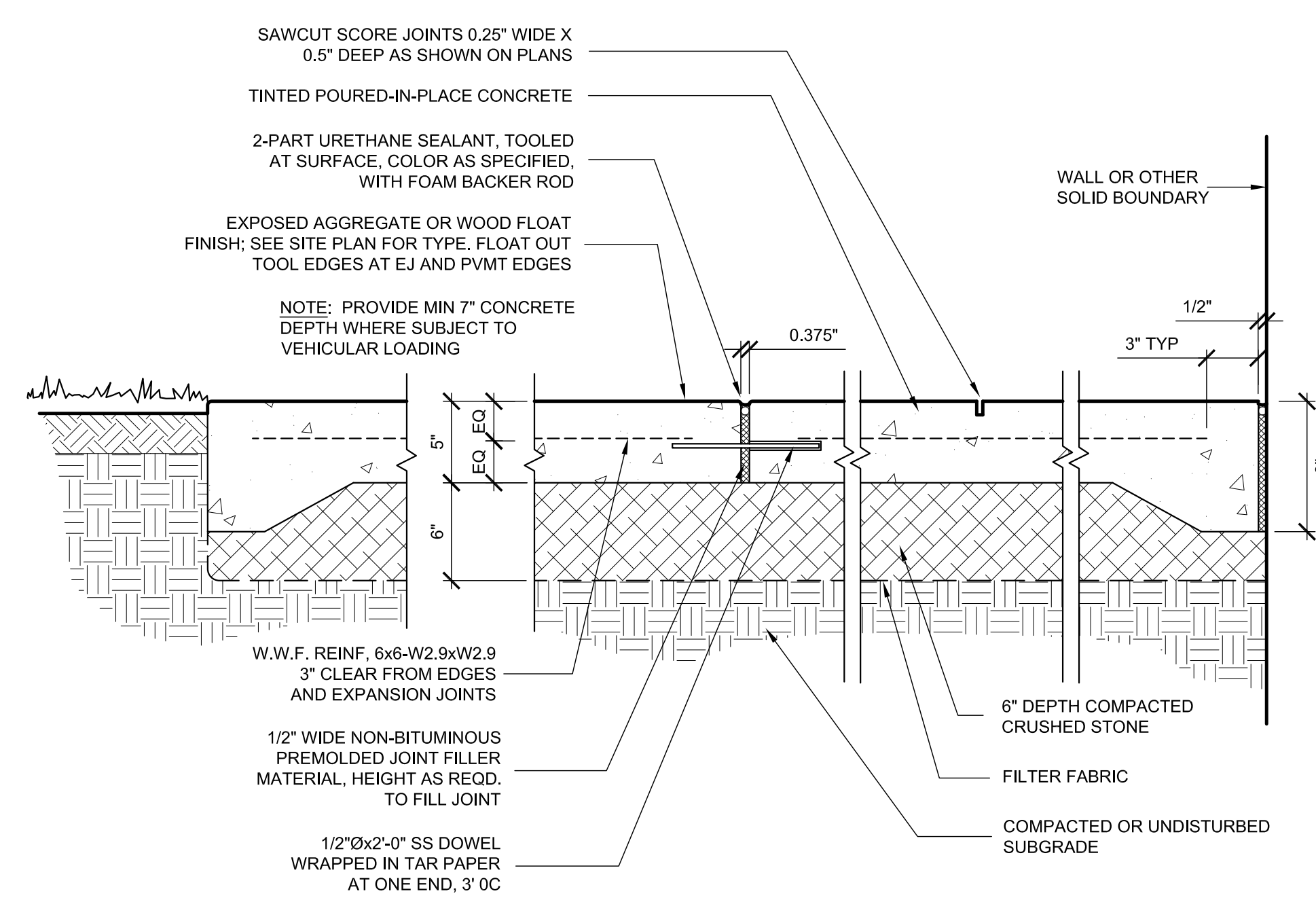
8 CONTINUOUS TREE PIT PLANTING
 NTS



1 GRANITE HEADER AT BRIDGE ABUTMENT
 1-1/2" = 1'-0"



4 SANDSTONE COBBLE PAVEMENT
 1-1/2" = 1'-0"



7 REINFORCED CONCRETE PAVEMENT
 1-1/2" = 1'-0"



Planning & Coordination
Architectural Resources
Estimating
Baer & Associates, LLC
Water Feature Design
Cloward H2O
Surveyor
Foit-Albert Associates
Historic
Preservation Studios
Landscape Architects & Planning
Quennell Rothschild & Partners, LLP
Geotechnical
SJB/Empire-Geo Services, Inc.
Specialty Lighting
Tillotson Design
Structural & Electrical Engineers
Watts Architecture & Engineering, PC

**Inner Harbor Development
Phase 3A - Canal Side
Public Canal Environments**
Erie Canal Harbor Development Corporation

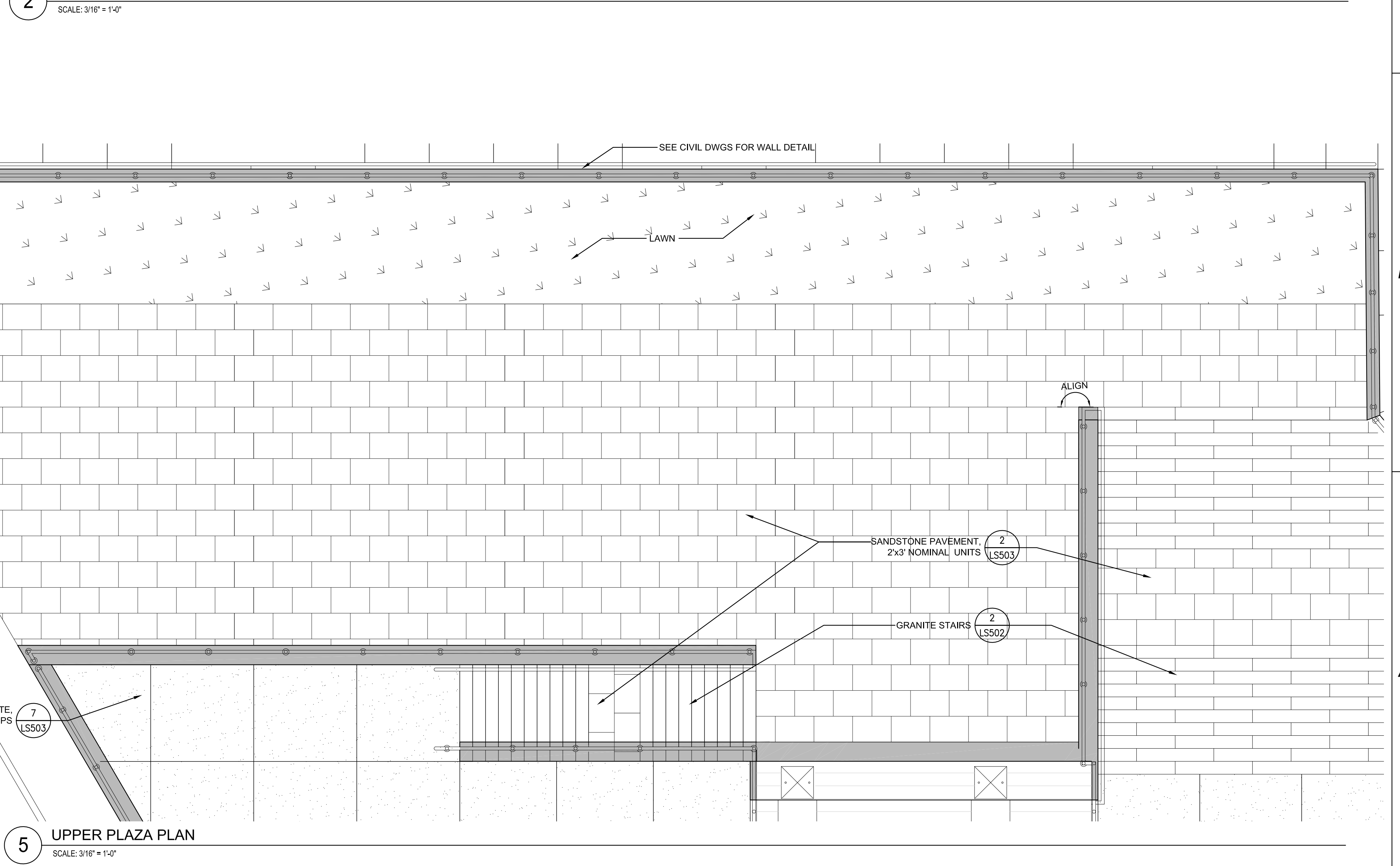
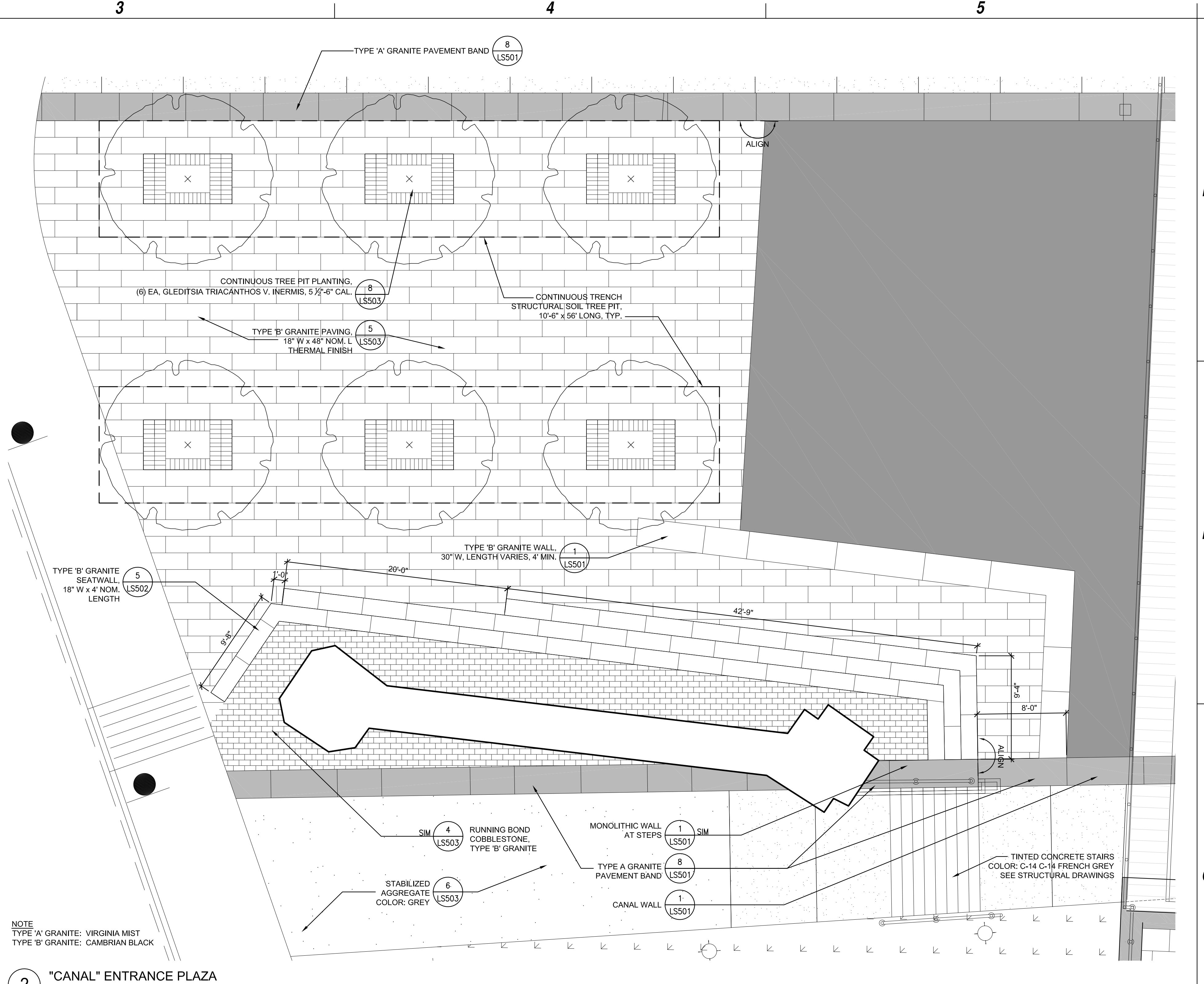
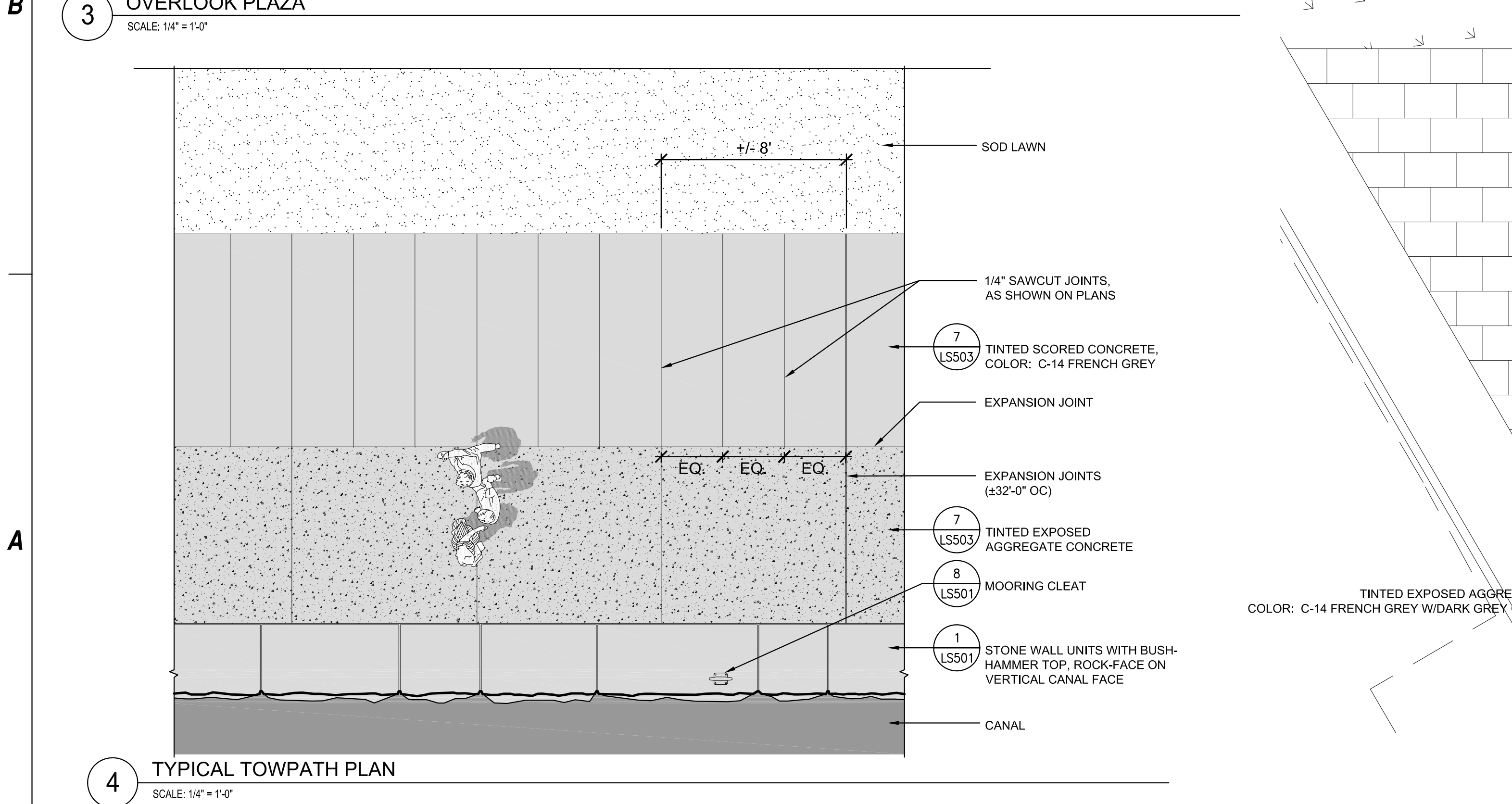
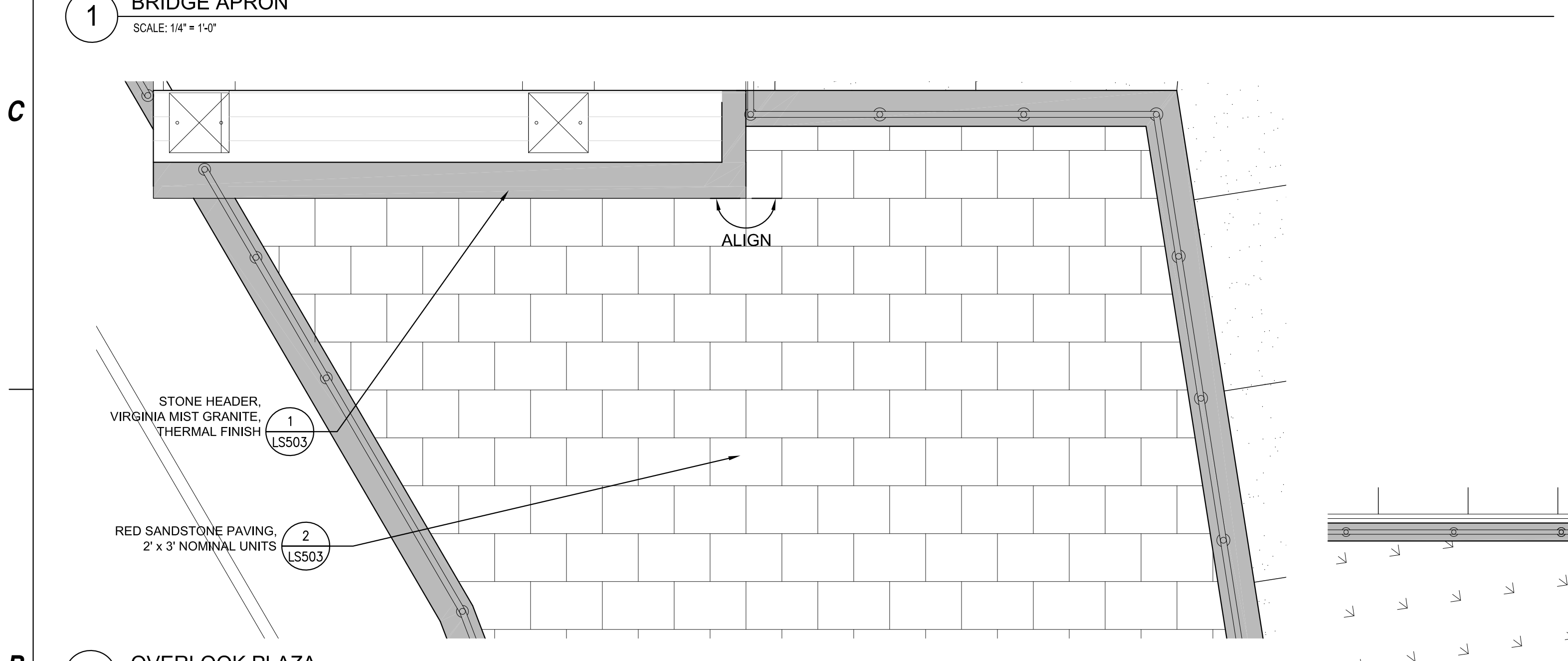
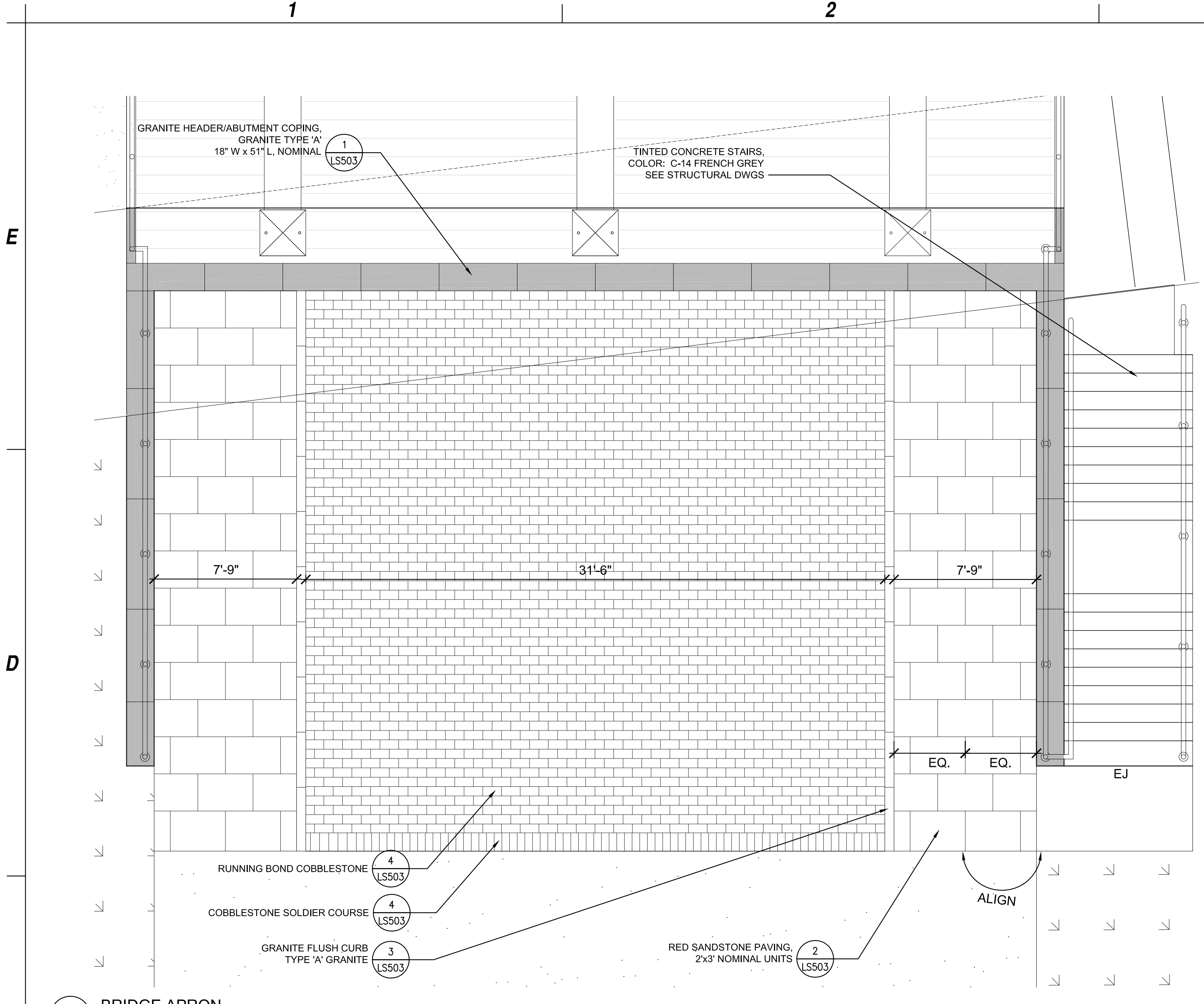
ISSUED FOR BIDDING PURPOSES;
NOT TO BE USED FOR CONSTRUCTION

MARK	DATE	DESCRIPTION
REVISIONS		
PROJECT NO: H34.002.001		
DATE: NOVEMBER 16, 2011		
DRAWN BY: CRP		
DESIGNED BY: M. BUNNELL		
CHECKED BY:		
NO ALTERATION PERMITTED HEREON EXCEPT AS PROVIDED UNDER SECTION 7209 SUBDIVISION 2 OF THE NEW YORK EDUCATION LAW		

**LANDSCAPE
DETAIL AREA PLANS**

LS102

New 10/16/2011 6:36pm
C:\1109420\Drawings\11-16-11\LS-102\Detail Areas Plans.dwg



NOTE
TYPE 'A' GRANITE: VIRGINIA MIST
TYPE 'B' GRANITE: CAMBRIAN BLACK

1

2

3

4

5

E

D

C

B

A

E

D

C

B

A



C&S Engineers, Inc.
 90 Broadway Street
 Buffalo, New York 14203
 Phone: 716-847-1630
 Fax: 716-847-1454
 www.cscos.com



Planning & Coordination
Architectural Resources
 Estimating
Baer & Associates, LLC
 Water Feature Design
Cloward H2O
 Surveyor
Foit-Albert Associates
 Historic
Preservation Studios
 Landscape Architects & Planning
Quennell Rothschild & Partners, LLP
 Geotechnical
SJB/Empire-Geo Services, Inc.
 Special Lighting
Tillotson Design
 Structural & Electrical Engineers
Watts Architecture & Engineering, PC

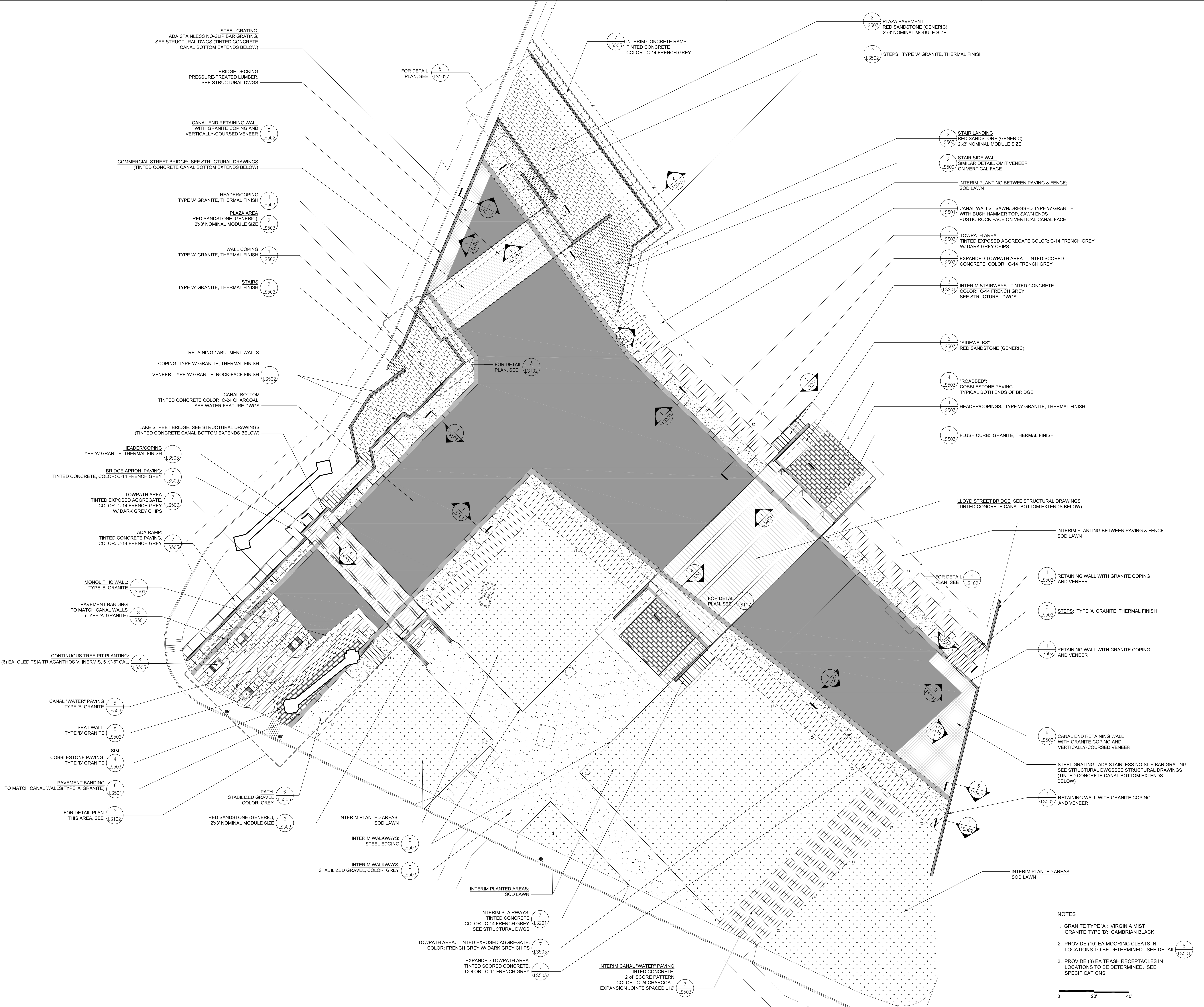
**Inner Harbor Development
 Phase 3A - Canal Side
 Public Canal Environments**
Erie Canal Harbor Development Corporation

ISSUED FOR BIDDING PURPOSES;
 NOT TO BE USED FOR CONSTRUCTION

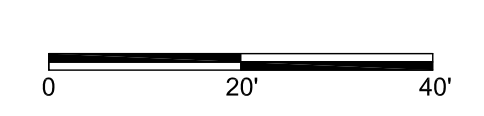
MARK	DATE	DESCRIPTION
REVISIONS		
		PROJECT NO: H34.002.001
		DATE: NOVEMBER 16, 2011
		DRAWN BY: CRP
		DESIGNED BY: M. BUNNELL
		CHECKED BY:
NO ALTERATION PERMITTED HEREON EXCEPT AS PROVIDED UNDER SECTION 7209 SUBDIVISION 2 OF THE NEW YORK EDUCATION LAW		

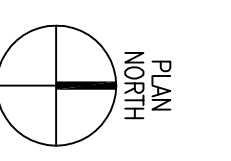
LANDSCAPE
MATERIALS PLAN
LS101

New 16_16_2011 6:39pm C:\1108420\Drawings\16-16-11\LS101-Materials Plan.dwg

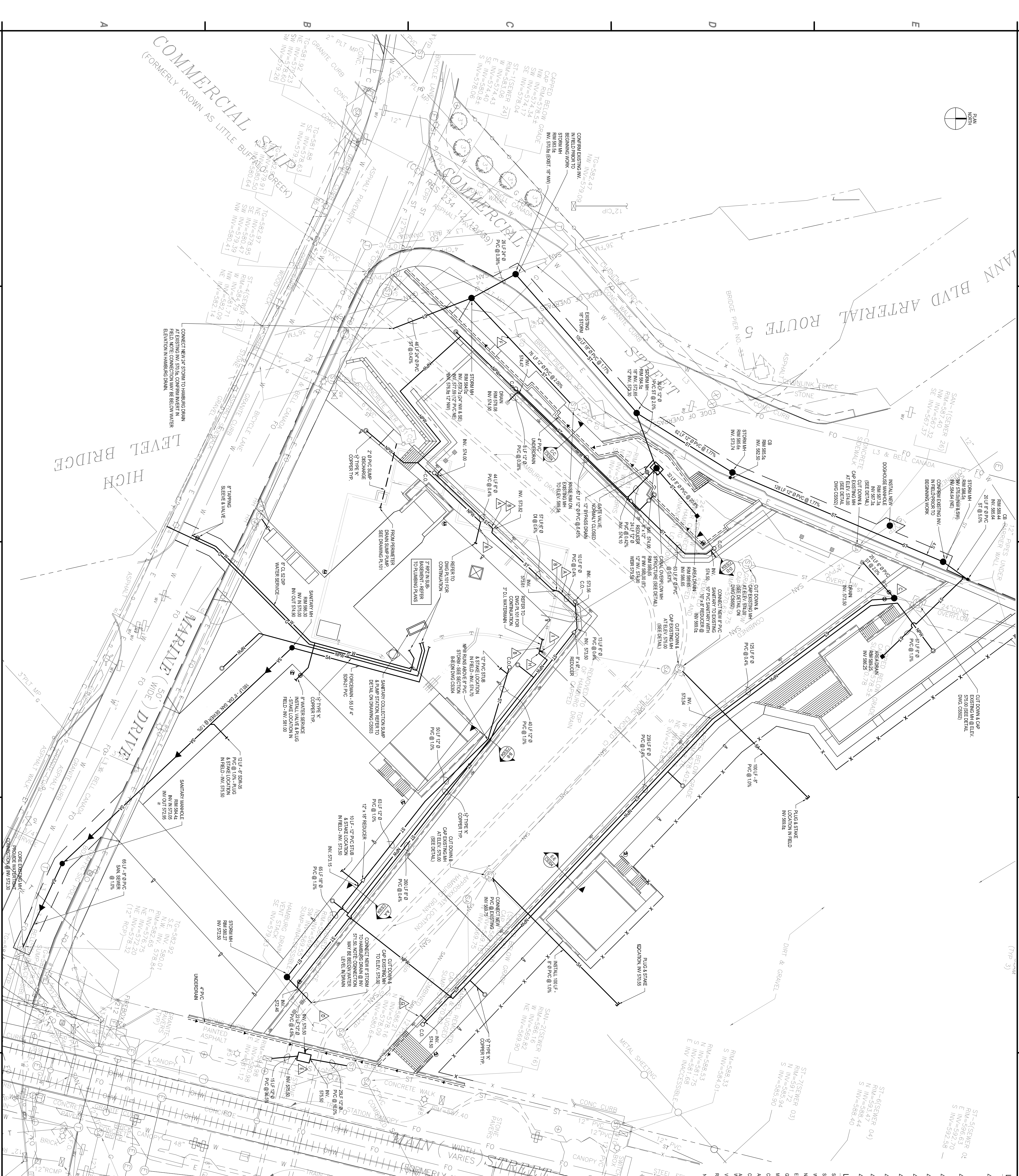


- NOTES**
1. GRANITE TYPE 'A': VIRGINIA MIST
 GRANITE TYPE 'B': CAMBRIAN BLACK
 2. PROVIDE (10) EA MOORING CLEATS IN LOCATIONS TO BE DETERMINED. SEE DETAIL (8)
 3. PROVIDE (8) EA TRASH RECEPTACLES IN LOCATIONS TO BE DETERMINED. SEE SPECIFICATIONS.

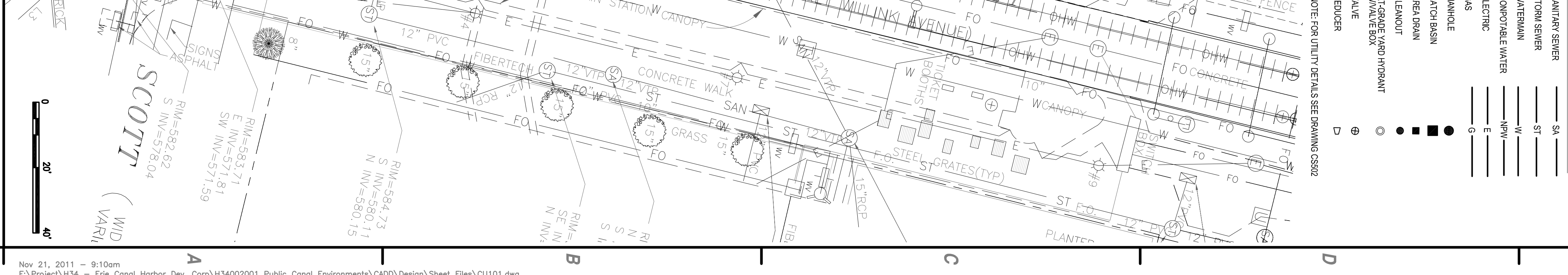




COMMERCIAL (FORMERLY KNOWN AS LITTLE BUTTE SLIP)



- LEGEND**
- ▲ TRANSITION FROM PFC TO PIPE
 - ▲ LINE SEAL PENETRATION THROUGH WALL
 - ▲ PENETRATION THROUGH WALL TO PERPENDICULAR UTILITY
 - ▲ PENETRATION THROUGH WALL TO WALL
 - ▲ PENETRATION TO BE PERPENDICULAR TO WALL
 - ▲ INSTALL OVERLAP MANHOLE AT 10% & 5%
 - ▲ REMOVE HENT STACK & CAP TOP OF DRAIN
 - ▲ SEE DETAIL ON DRAIN CS&S
 - ▲ CONSTRUCTION STACK - SEE DETAIL ON DRAIN CS&S
 - ▲ CONNECT TO EXISTING 12" STORM TO NEW 12" PVC
 - ▲ CONNECT TO CANAL DRAIN (SEE WATER FEATURE)
 - ▲ REDUCE FROM 3" CLEAR TO 1/4" TYPE K COPPER
 - ▲ CONNECT 3" STORM TO AUTO FILL DEVICE - SEE WATER FEATURE
 - ▲ WIND UP SANITARY SWIMMING
- LEGEND**
- SA SANITARY SEWER
 - ST STORM SEWER
 - W WATERMAIN
 - HW HORIZONTAL WATER
 - E ELECTRIC
 - G GAS
 - MANHOLE
 - CATCH BASIN
 - AREA DRAIN
 - CLEANOUT
 - AT&GROSS APPROXIMATE
 - WAVE BOX
 - REDUCER
 - NOTE: PER UTILITY DETAILS SEE DRAWING CS&S



Nov 21, 2011 - 9:10am
F:\Project\H34 - Erie Canal Harbor Dev. Corp.\H34020201 Public Canal Environments\CADD\Design\Sheet Files\CUI101.dwg

Inner Harbor Development Phase 3A - Canal Side Public Canal Environments

Erie Canal Harbor Development Corporation

C&S ENGINEERS, INC.
90 Broadway Street
Buffalo, New York 14203
Tel: 716-847-1454
www.cscos.com

CUI101

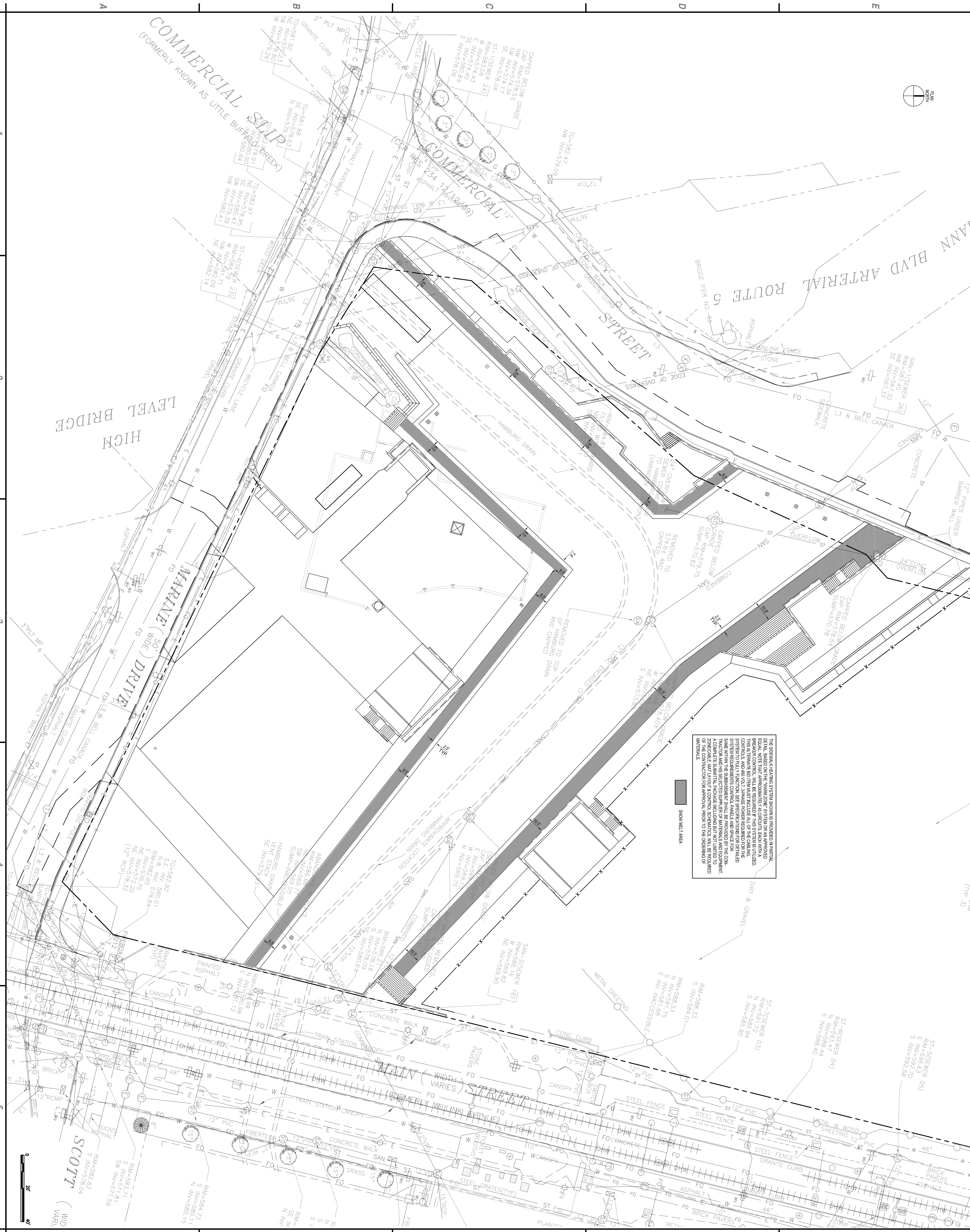
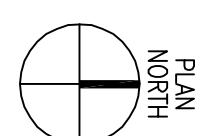
UTILITY PLAN

C&S COMPANIES

PROJECT NO: H34-020201
DATE: NOVEMBER 16, 2011
DRAWN BY: J. HINLEY
CHECKED BY: L. DENNEY
NO ALTERATION PERMITTED HEREON EXCEPT AS PROVIDED UNDER SECTION 2 OF THE NEW YORK EDUCATION LAW

Specialty & Electrical Engineering
Structural & Civil Engineering
Mechanical & HVAC Engineering
Site Design
Landscape Architecture & Planning
Interior Architecture & Design
Civil Engineering
Environmental Engineering
Geotechnical Engineering
Surveying
Water Resources Engineering
Architectural Resources
Architectural Resources
Architectural Resources
Bar & Associates, LLC
Water Resource Design
Coward H2O
F&A Associates
Historic Preservation Studios
Urban & Regional Planning
Quinn-Rosenfield & Partners, LLP
Generalist
S&B Enterprises Services, Inc.
Specialty Lighting
Tidson Design
Structural & Electrical Engineering
W&S Architecture & Engineering, PC

Sanitary Sewer
Storm Sewer
Watermain
Horizontal Water
Electric
Gas
Manhole
Catch Basin
Area Drain
Cleanout
At&Gross Approximate
Wave Box
Reducer



THE GENERAL HEATING SYSTEM SPECIFICATIONS PROVIDED IN PARTIAL EQUIPMENT SCHEDULES SHALL BE REVIEWED BY THE OWNER AND THE ENGINEER. THIS ALTERNATE BID MUST INCLUDE ALL OF THE HEATING SYSTEMS TO FULLY FUNCTION. SEE SPECIFICATIONS FOR DETAILED SYSTEM REQUIREMENTS. CONTROL PANELS AND SPACE FOR SAME WITHIN THE SUBBASEMENT SHALL BE PROVIDED BY THE CONTRACTOR. A COMPLETE SUBMITTAL PACKAGE INCLUDING BUT NOT LIMITED TO THE CONTROL PANEL LAYOUT AND CONTROL SCHEMATICS WILL BE REQUIRED ON THE CONTRACT FOR APPROVAL PRIOR TO THE ORDERING OF MATERIALS.

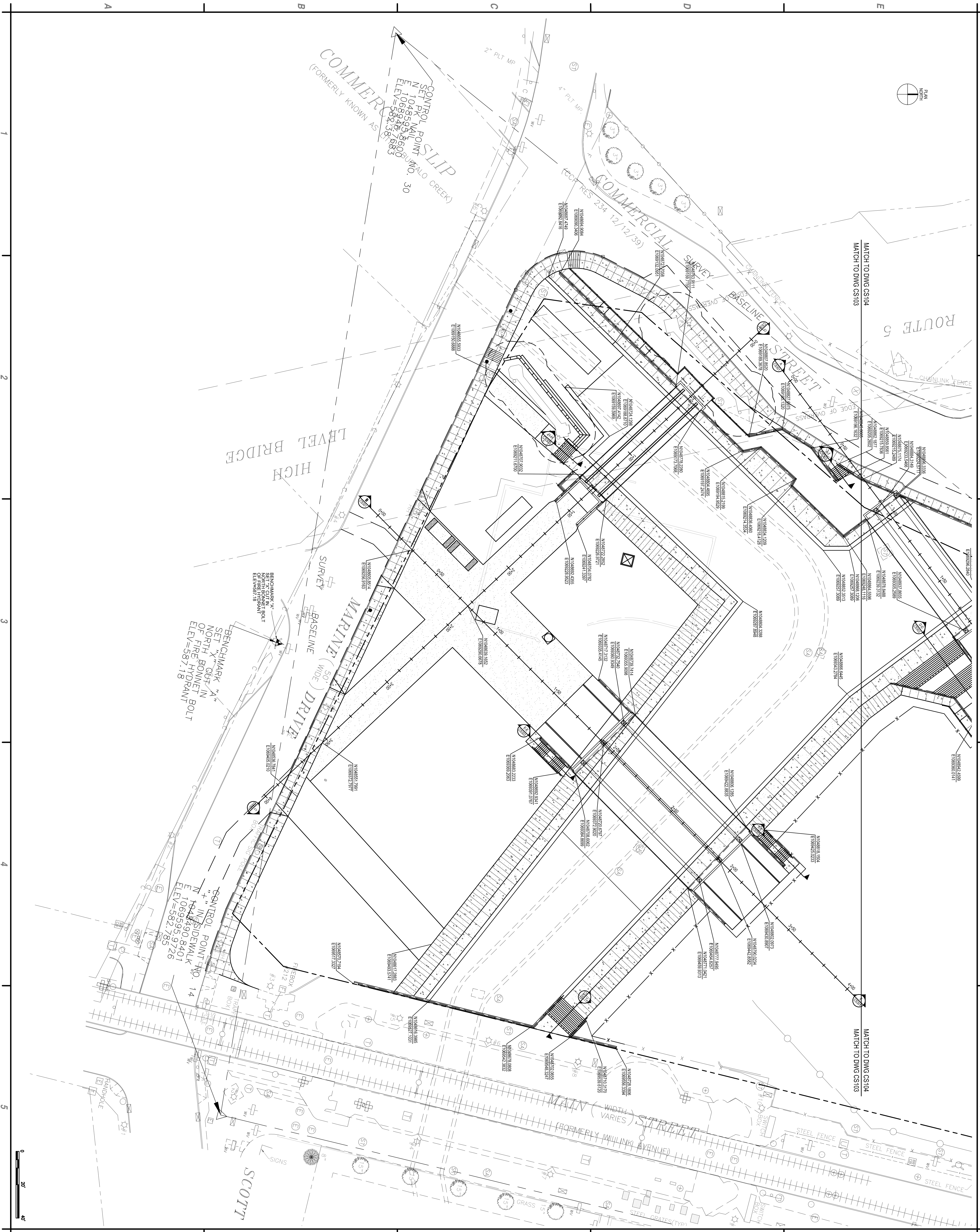
■ SNOW MELT AREA

MARK	DATE	DESCRIPTION
REVISIONS		
DATE	NOVEMBER 16, 2011	
DRAWN BY	J. HARVEY	
DESIGNED BY	L. BARNETT	
CHECKED BY	L. BARNETT	
PROJECT NO.	144-002-001	
DATE	NOVEMBER 16, 2011	
PROJECT	INNER HARBOR DEVELOPMENT PHASE 3A - CANAL SIDE	
DESIGN	SCHEMATIC DESIGN	
SCALE	AS SHOWN	
PROJECT LOCATION	2709 SUBDIVISION 2 OF THE NEW YORK EDUCATION LAW	
CIVIL		

**Inner Harbor Development
Phase 3A - Canal Side
Public Canal Environments**

Erie Canal Harbor Development Corporation

<p>C&S COMPANIES</p> <p>C&S Engineers, Inc. 90 Broadway Street Buffalo, New York 14203 Phone: 716-847-1630 Fax: 716-847-1454 www.candse.com</p>	<p>Planning & Consultation Architectural Resources Engineering Baer & Associates, LLC Water Resources Design Cleveland H2O</p>	<p>Structural & General Engineering Structural Steel Tilston Design</p>	<p>Geotechnical SJB/Emper-Ceo Services, Inc.</p>	<p>Quaternel Rentschler & Partners, LLP Landscape Architects & Planning Historic Preservation Studios Fort-Libert Associates S&B/Emper-Ceo Services, Inc.</p>	<p>Structural & General Engineering Structural Steel Tilston Design</p>
--	--	---	--	---	---

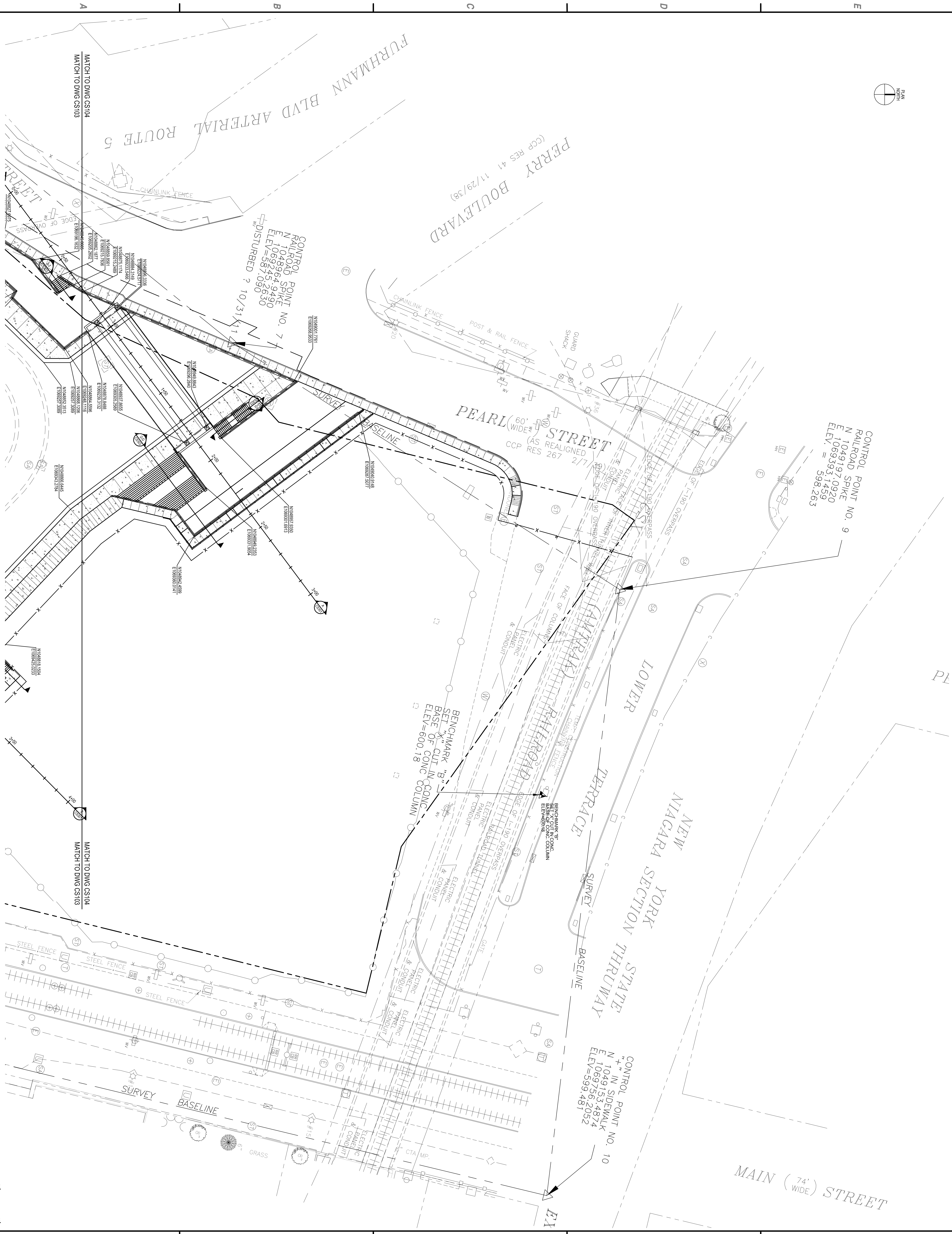
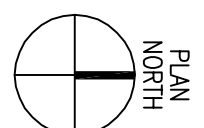


MARK	DATE	DESCRIPTION
REVISIONS		
PROJECT NO.:	144-002-0011	
DATE:	NOVEMBER 16, 2011	
DRAWN BY:	J. HARLEY	
DESIGNED BY:	L. SPREY	
CHECKED BY:	L. SPREY	
ALL RIGHTS RESERVED UNDER SECTION 2209 SUBDIVISION 2 OF THE NEW YORK EDUCATION LAW		

Inner Harbor Development
Phase 3A - Canal Side
Public Canal Environments

Erie Canal Harbor Development Corporation

CS COMPANIES C&S Engineers, Inc. 90 Broadway Street Buffalo, New York 14203 Phone: 716-847-1630 Fax: 716-847-1454 WWW.CS103.COM		Planning & Coordination Architectural Resources Estimating Baer & Associates, LLC Water Feature Design Cloward H2O Survey Fort-Libert Associates Historic Preservation Studies Landscape Analysis & Planning Quennell Rothschild & Partners, LLP Geotechnical SJB/Empe-Geo Services, Inc. Structural Tillison Design Structural & General Engineering Walls, Foundations & Engineering, PC
--	--	--



Nov 18, 2011 - 1:01pm
 F:\Project\1434 - Erie Canal Harbor Dev. Corp\434002001 Public Canal Environments\CADD\Design\Sheet Files\CS103.dwg

MARK	DATE	DESCRIPTION
REVISIONS		
PROJECT NO. 434.002.001		
DATE: NOVEMBER 16, 2011		
DRAWN BY: J. HARVEY		
DESIGNED BY: L. SPREY		
CHECKED BY: L. SPREY		
EXCEPT AS PROVIDED THE DESIGNATION 7209 SUBDIVISION 2 OF THE NEW YORK EDUCATION LAW		

**Inner Harbor Development
 Phase 3A - Canal Side
 Public Canal Environments**

Erie Canal Harbor Development Corporation

CS104
COMPANIES

C&S Engineers, Inc.
 90 Broadway Street
 Buffalo, New York 14203
 Phone: 716-847-1630
 Fax: 716-847-1484
 www.cses.com

Planning & Coordination
 Architectural Resources
 Baer & Associates, LLC
 Water Resource Design
 Cloward H2O

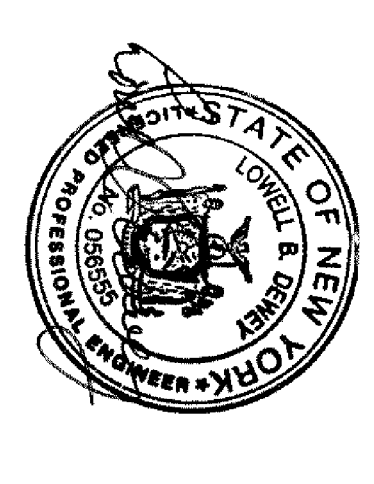
Structural
 Fort/Libert Associates

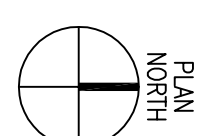
Historic
 Preservation Studios

Landscape Architects & Planning
 Quennell Rentschler & Partners, LLP

Geotechnical
 SJB/Emper-Ceo Services, Inc.
 Sued/Lubbers

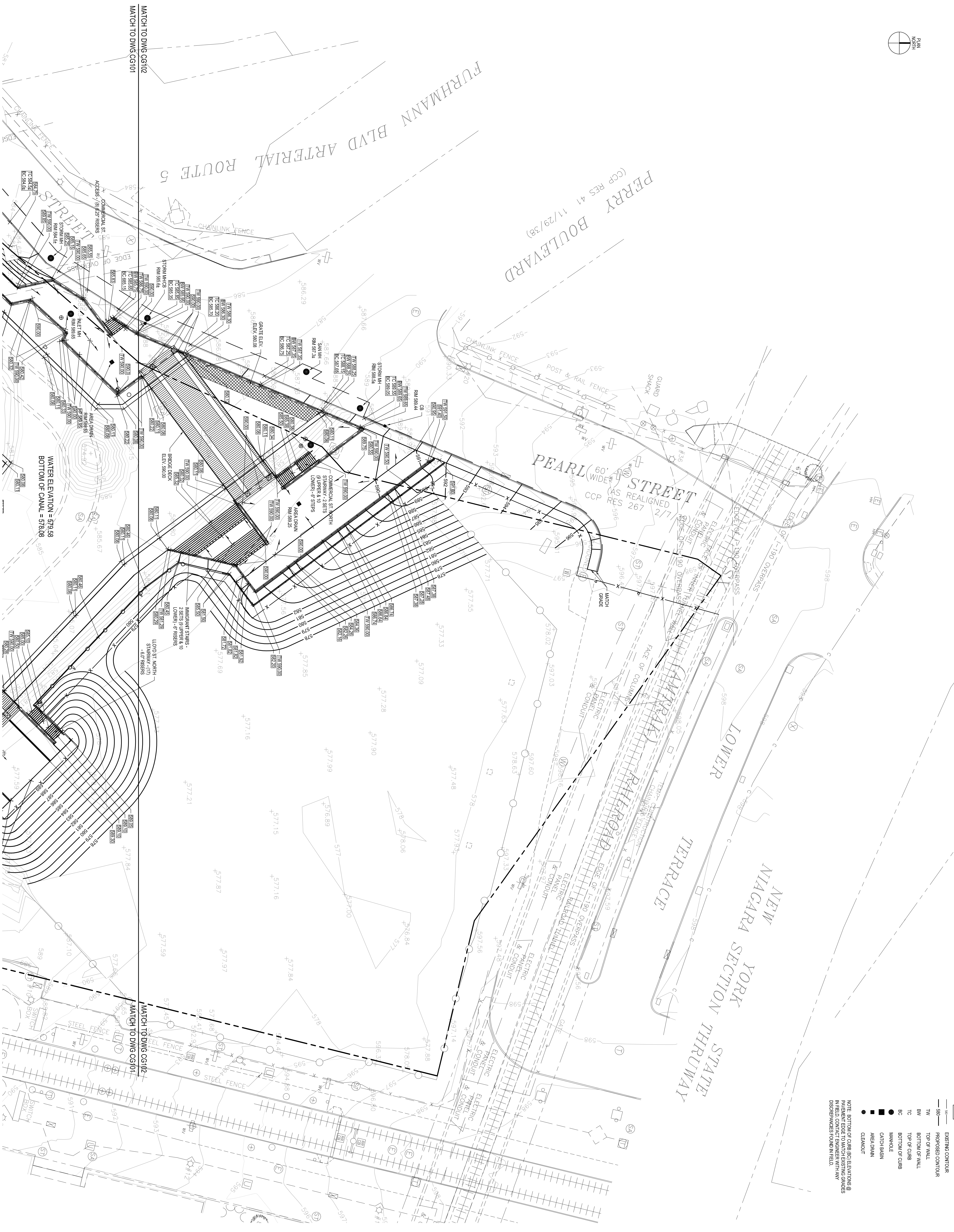
Structural & Special Engineering
 Walls Architecture & Engineering, PC
 Tiltison Design





- LEGEND**
- PROPOSED POINT ELEVATION
 - - - EXISTING CONTOUR
 - - - PROPOSED CONTOUR
 - TVL TOP OF WALL
 - BW BOTTOM OF WALL
 - TC TOP OF CURB
 - BC BOTTOM OF CURB
 - MANHOLE
 - CATCH BASIN
 - AREA DRAIN
 - CLEANOUT

NOTE: BOTTOM OF CURB ELEVATIONS @ PAVED EDGE TO MATCH EXISTING GRADES. PAVED EDGE TO MATCH EXISTING GRADES. OTHER MANHOLE IN FIELD.



MATCH TO DWG CG102
MATCH TO DWG CG101

WATER ELEVATION = 579.58
BOTTOM OF CANAL = 578.08

MATCH TO DWG CG102
MATCH TO DWG CG101

 C&S COMPANIES	C&S Engineers, Inc. 90 Broadway Street Buffalo, New York 14203 Tel.: 716-547-1454 Fax: 716-547-1454 www.cscos.com	 State of New York Professional Engineer No. 14203 Exp. 12/31/11	Planning & Consultant Architectural Resources Estimating Barr & Associates, LLC Water Feature Design Cleward H2O Surveyor Fort-Albert Associates Historic Preservation Studios Underwood Architects & Planners Quarantelli Robinson & Partners, LLP Geotechnical S/D Empire Geo Services, Inc. Special Lighting Tiltedson Design Structural & Electrical Engineers Weiss Architecture & Engineering, PC	<p>Inner Harbor Development Phase 3A - Canal Side Public Canal Environments</p> <p>Erie Canal Harbor Development Corporation</p>	<p>PROJECT NO: H24-002-001 DATE: NOVEMBER 16, 2011 DRAWN BY: J.HURLEY DESIGNED BY: L.DEMAY CHECKED BY: L.DEMAY NO ALTERATION PERMITTED HEREON EXCEPT AS PROVIDED UNDER SECTION EDUCATION LAW</p>
<p>GRADING PLAN NORTH</p>					
<p>CG102</p>					

Nov 21, 2011 - 9:19am
 F:\Project\H24 - Erie Canal Harbor Dev. Corp.\H24\002\001 Public Canal Environments\CADD\Design\Sheet Files\CG101.dwg